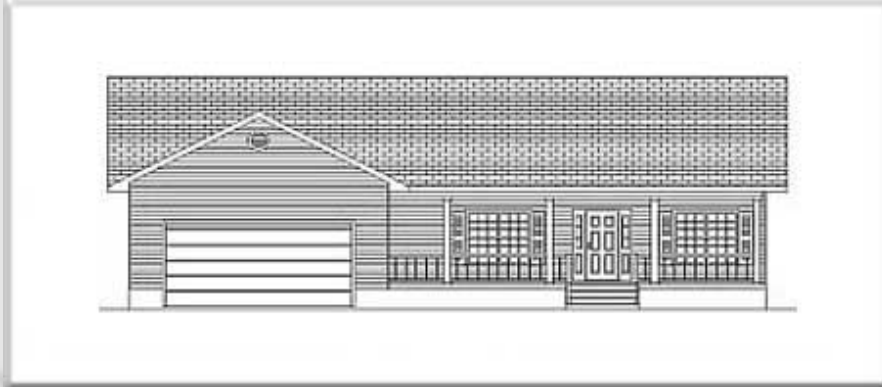




[← BACK](#)   [CONTENTS](#)   [NEXT →](#)

## Winchester II



Copyright© 2000 Excalibur Steel Structures of Tennessee, LLC.

### Specifications\*

Living Area, 1st Floor:	1,956 s.f.	Dimensions (Overall):	61'-4" x 65'-10"
Living Area, 2nd Floor:	n/a	Roof Pitch:	6/12
Utility:	65 s.f.	Ceiling Height, 1st Flr.:	8'
Garage:	560 s.f.	Ceiling Height, 2nd Flr.:	n/a
Porch, Front:	291 s.f.	Bedrooms:	3
Porch, Rear:	155 s.f.	Baths:	2
<b>Total Area:</b>	<b>3,027 s.f.</b>	Fireplace:	n/a
Basement (optional):	1,840 s.f.	Standard Model Price:	<a href="#">Price List</a>



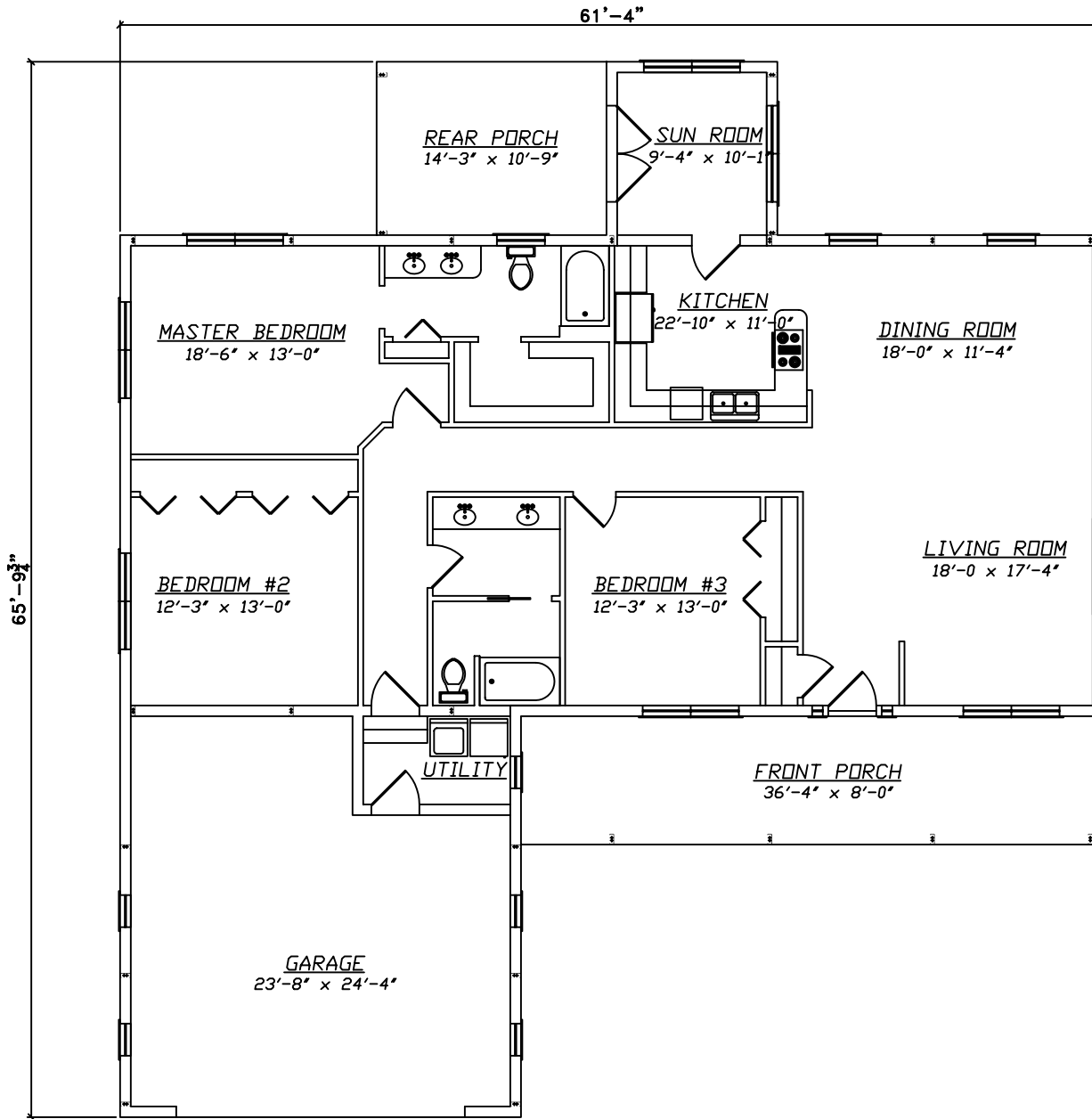
[Help/info](#)

<a href="#">Front/ Left Elevation</a>	<a href="#">Rear/ Right Elevation</a>
<a href="#">1st Floor Plan</a>	<a href="#">2nd Floor Plan</a>

\*Values are approximate



[RETURN TO HOME PAGE](#)

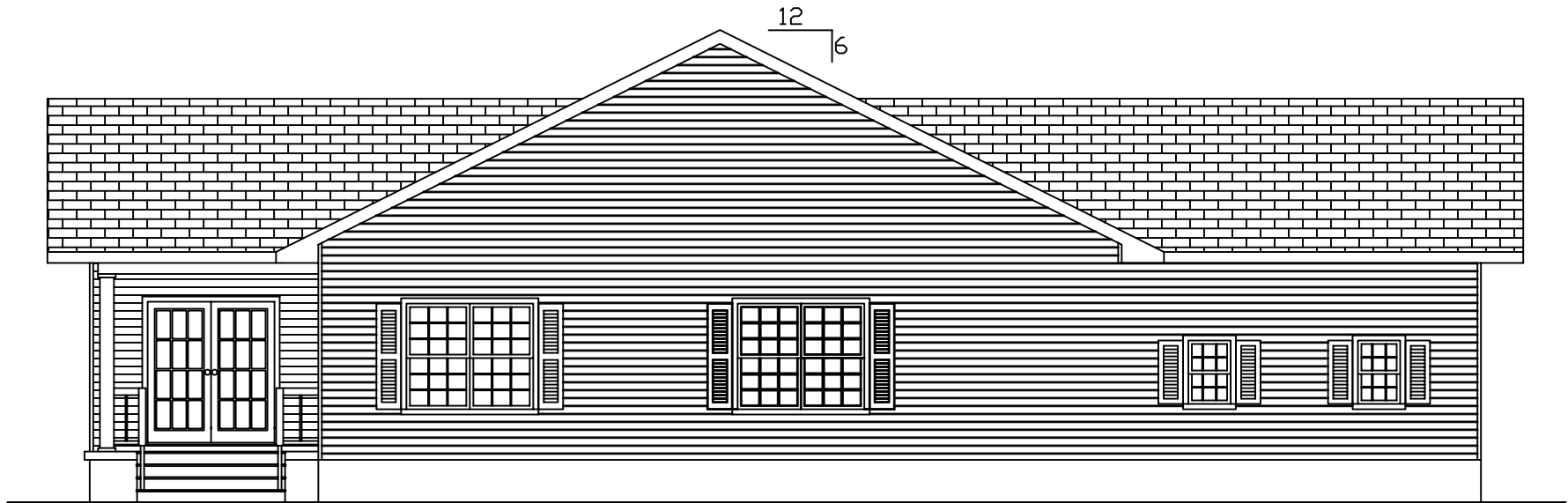


**1st Floor**

<p>0 1 2 3 4 5 6 7 8 9 10</p> <p>Scale: 3/32" = 1'</p>	<p><b>Winchester II</b></p>	<p>EXCALIBUR STEEL STRUCTURES ExcaliburSteel.com 423-624-1047</p>
--	-----------------------------	---



**Front**

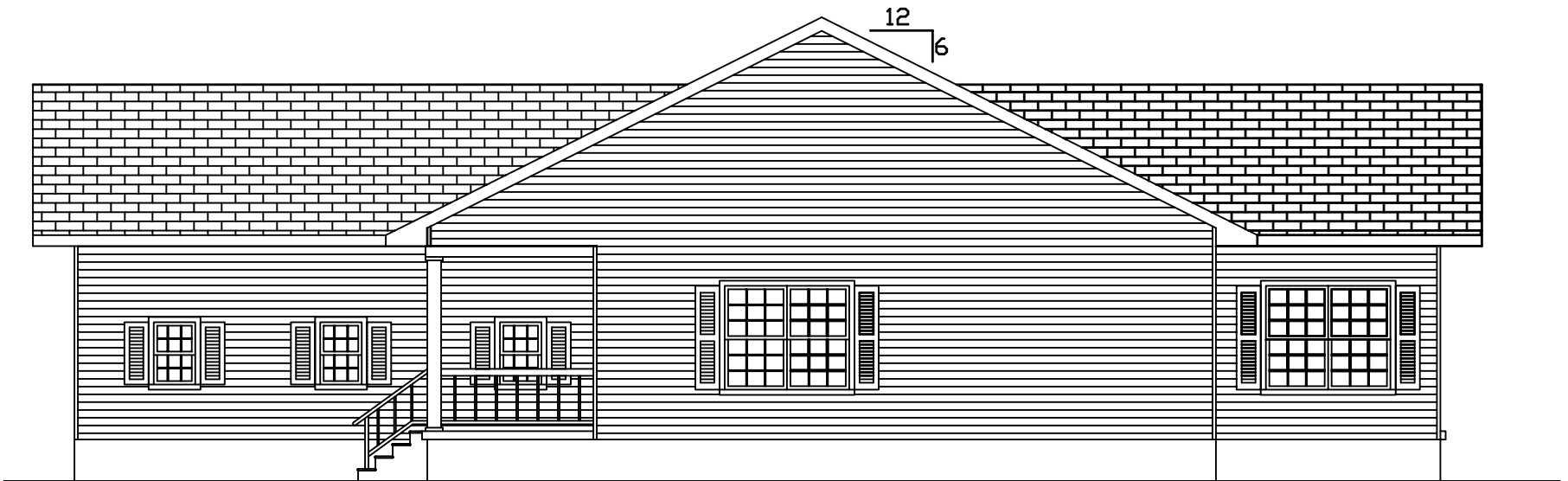


**Left**

<p>0 1 2 3 4 5 6 7 8</p> <p>Scale: 1/8" = 1'</p>	<p><b>Winchester II</b></p>	<p>EXCALIBUR STEEL STRUCTURES ExcaliburSteel.com 423-624-1047</p>
--	-----------------------------	---

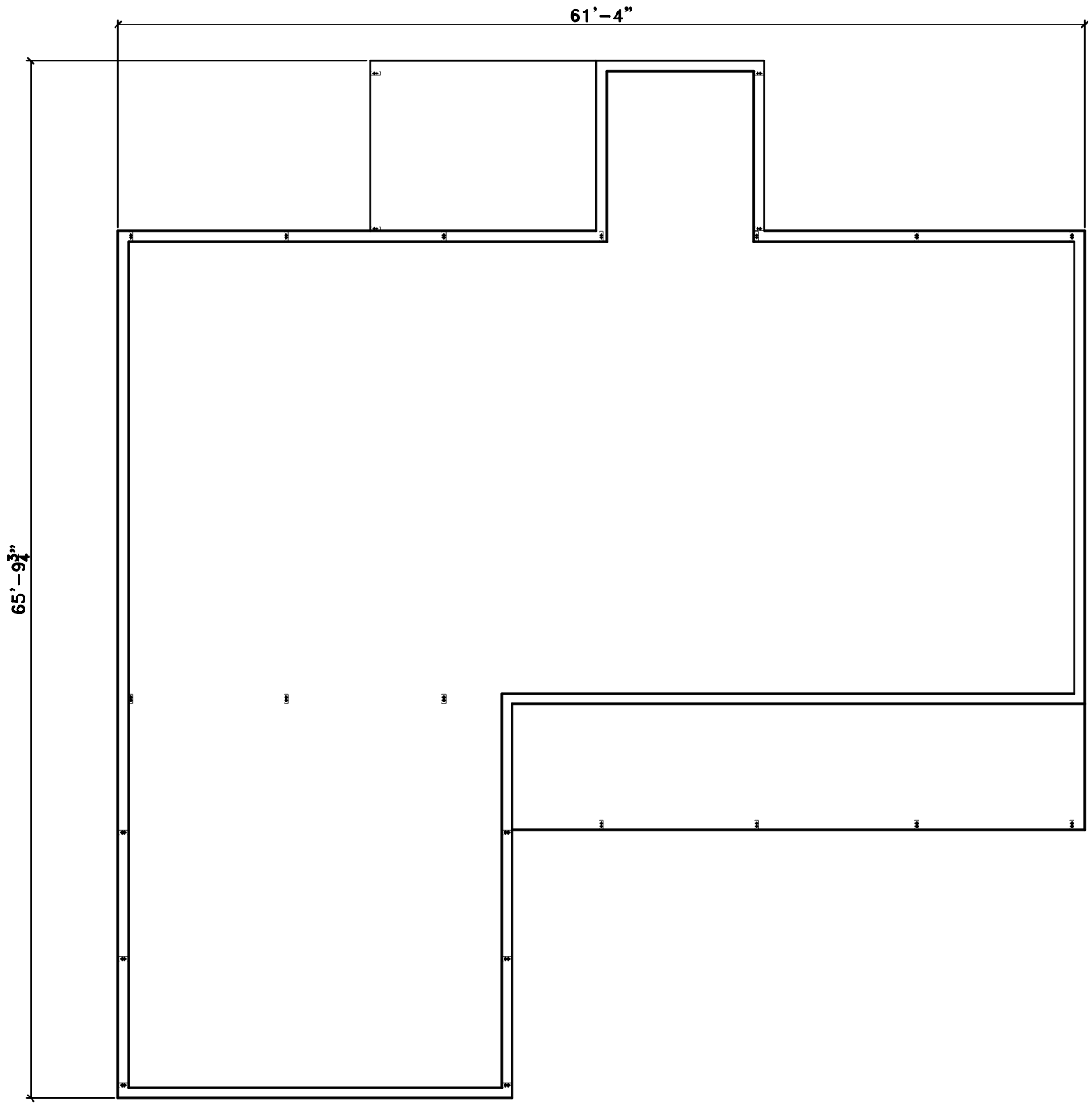


**Rear**



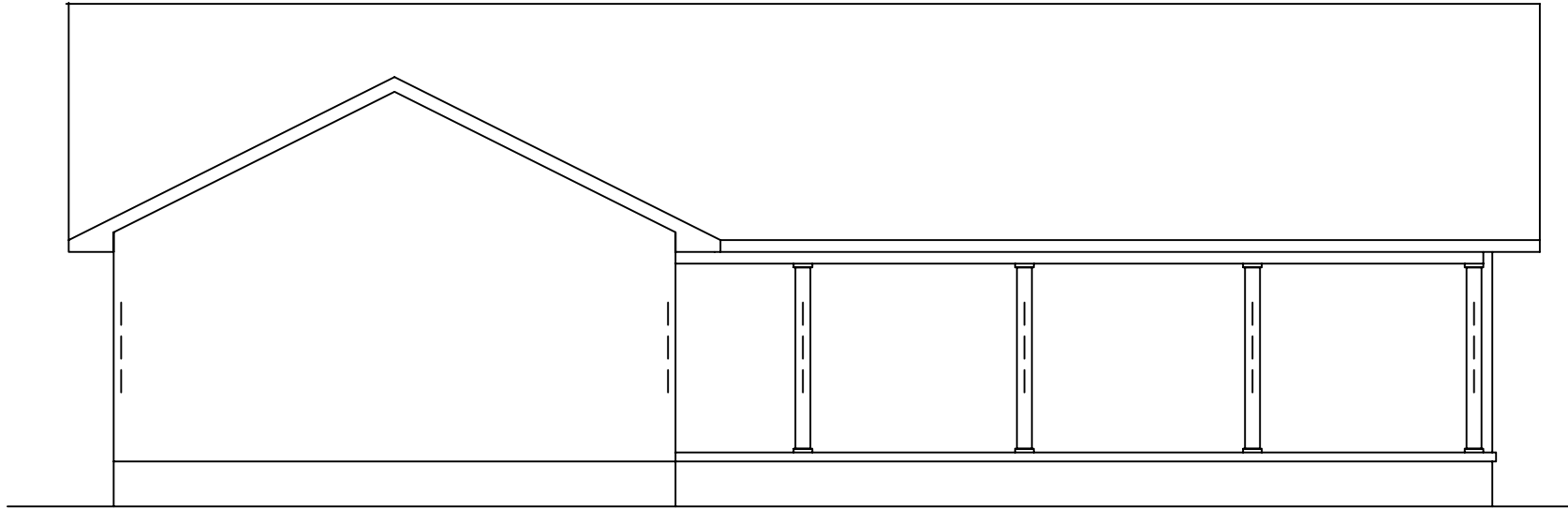
**Right**

<p>0 1 2 3 4 5 6 7 8</p> <p>Scale: 1/8" = 1'</p>	<p><b>Winchester II</b></p>	<p>EXCALIBUR STEEL STRUCTURES ExcaliburSteel.com 423-624-1047</p>
--	-----------------------------	---

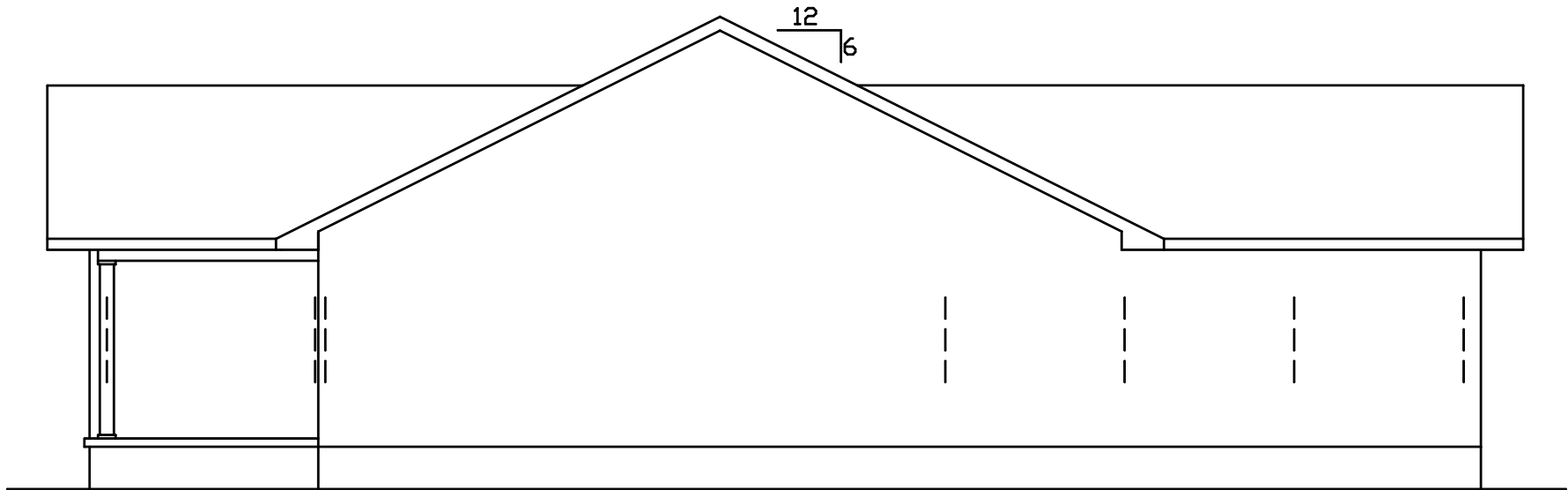


**1st Floor**

<p>0 1 2 3 4 5 6 7 8 9 10</p> <p>Scale: 3/32" = 1'</p>	<p><b>Winchester II</b></p>	<p>EXCALIBUR STEEL STRUCTURES ExcaliburSteel.com 423-624-1047</p>
--	-----------------------------	---

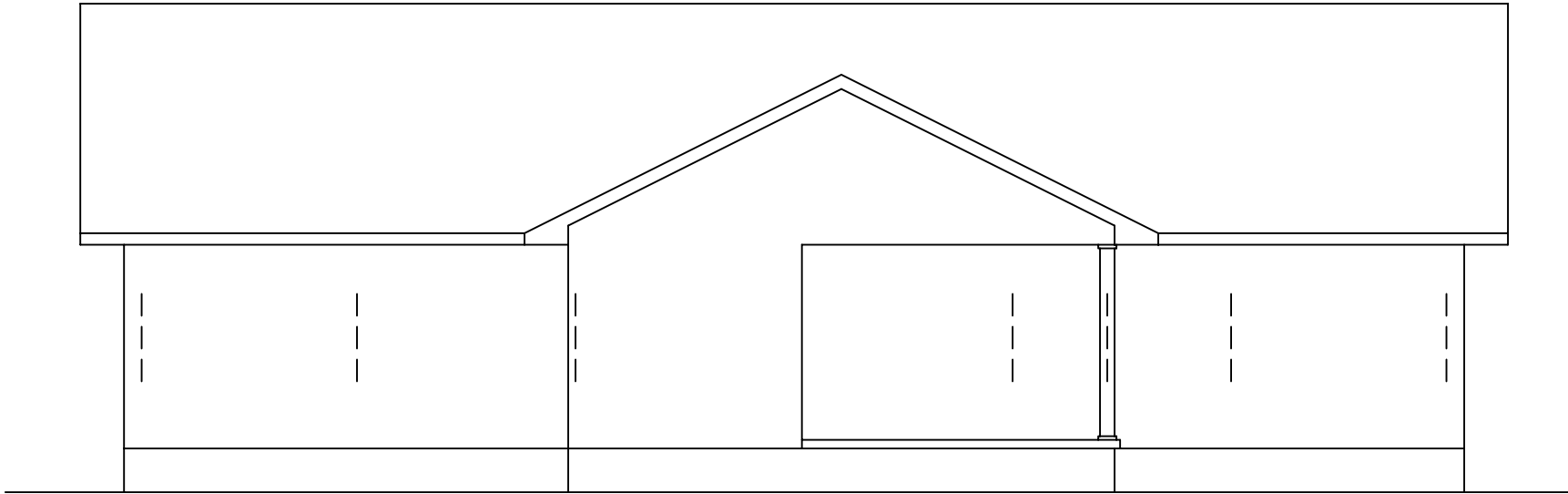


**Front**

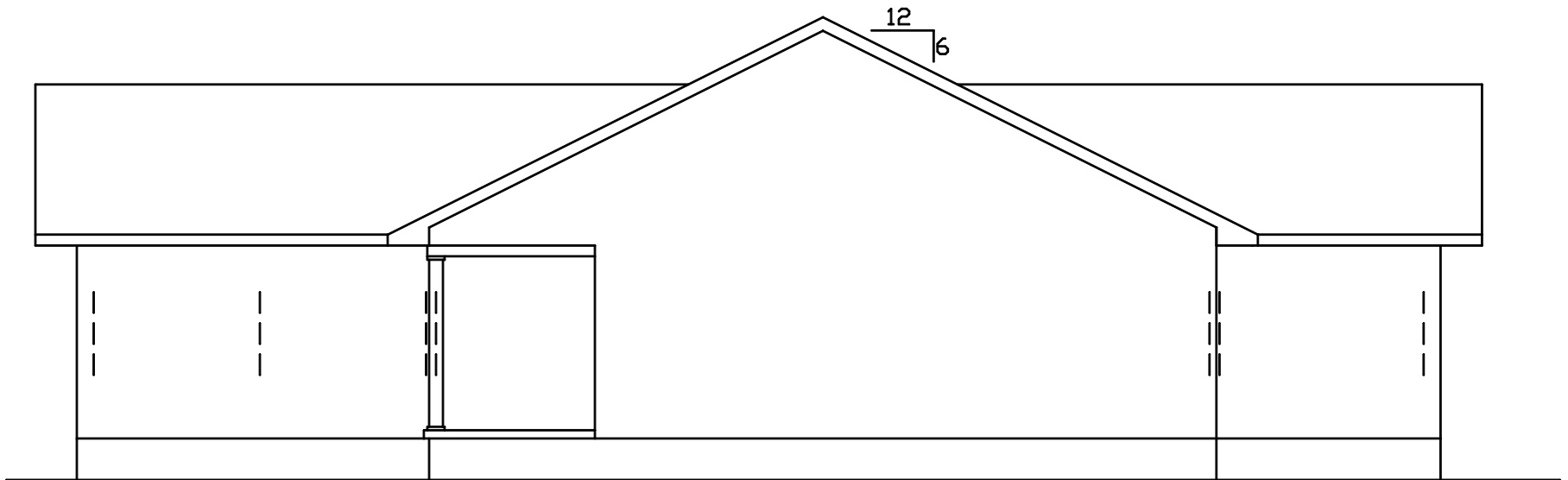


**Left**

	<p><b><u>Winchester II</u></b></p>		<p>EXCALIBUR STEEL STRUCTURES ExcaliburSteel.com 423-624-1047</p>
<p>Scale: 1/8" = 1'</p>			



Rear



Right

0 1 2 3 4 5 6 7 8 	<b>Winchester II</b>		EXCALIBUR STEEL STRUCTURES ExcaliburSteel.com 423-624-1047
-----------------------	----------------------	--	---