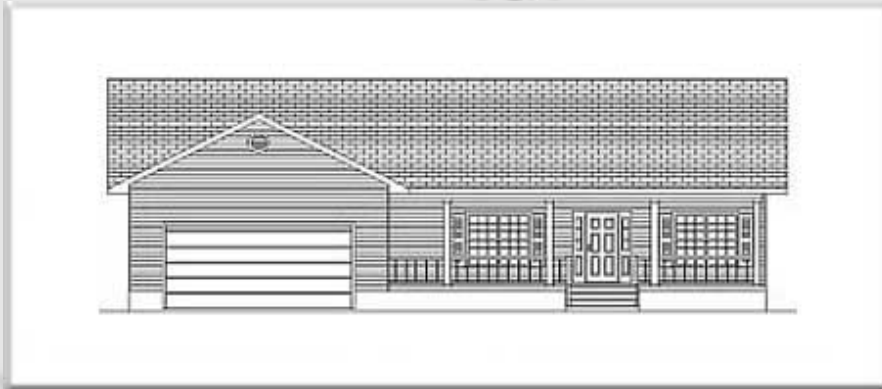




[← BACK](#) [CONTENTS](#) [NEXT →](#)

Winchester I



Copyright© 2000 Excalibur Steel Structures of Tennessee, LLC.

Specifications*

Living Area, 1st Floor:	1,956 s.f.	Dimensions (Overall):	61'-4" x 65'-10"
Living Area, 2nd Floor:	n/a	Roof Pitch:	6/12
Utility:	65 s.f.	Ceiling Height, 1st Flr.:	8'
Garage:	560 s.f.	Ceiling Height, 2nd Flr.:	n/a
Porch, Front:	291 s.f.	Bedrooms:	2
Porch, Rear:	155 s.f.	Baths:	2
Total Area:	3,027 s.f.	Fireplace:	n/a
Basement (optional):	1,840 s.f.	Standard Model Price:	Price List



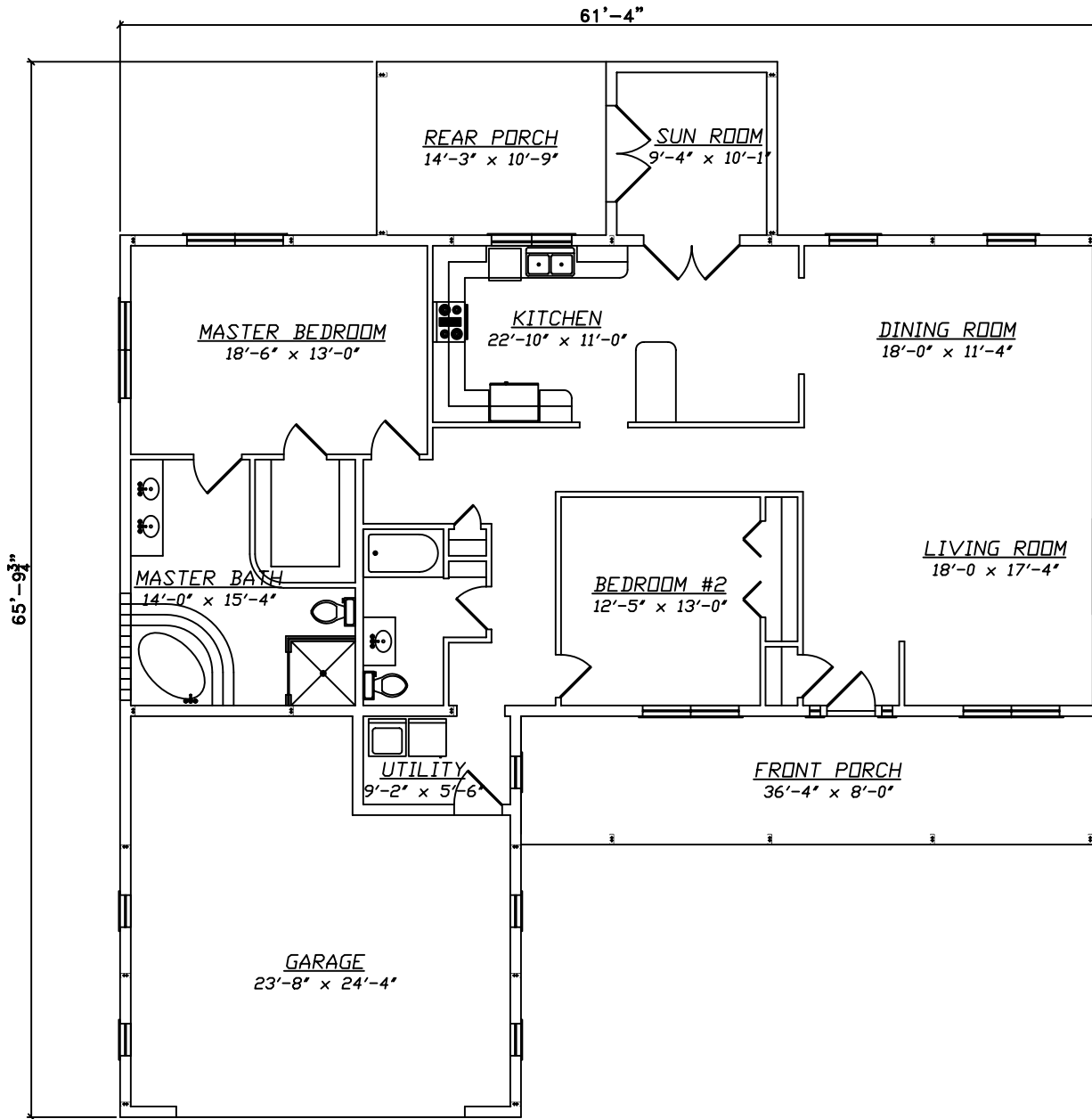
[Help/info](#)

Front/ Left Elevation	Rear/ Right Elevation
1st Floor Plan	2nd Floor Plan

*Values are approximate



[RETURN TO HOME PAGE](#)

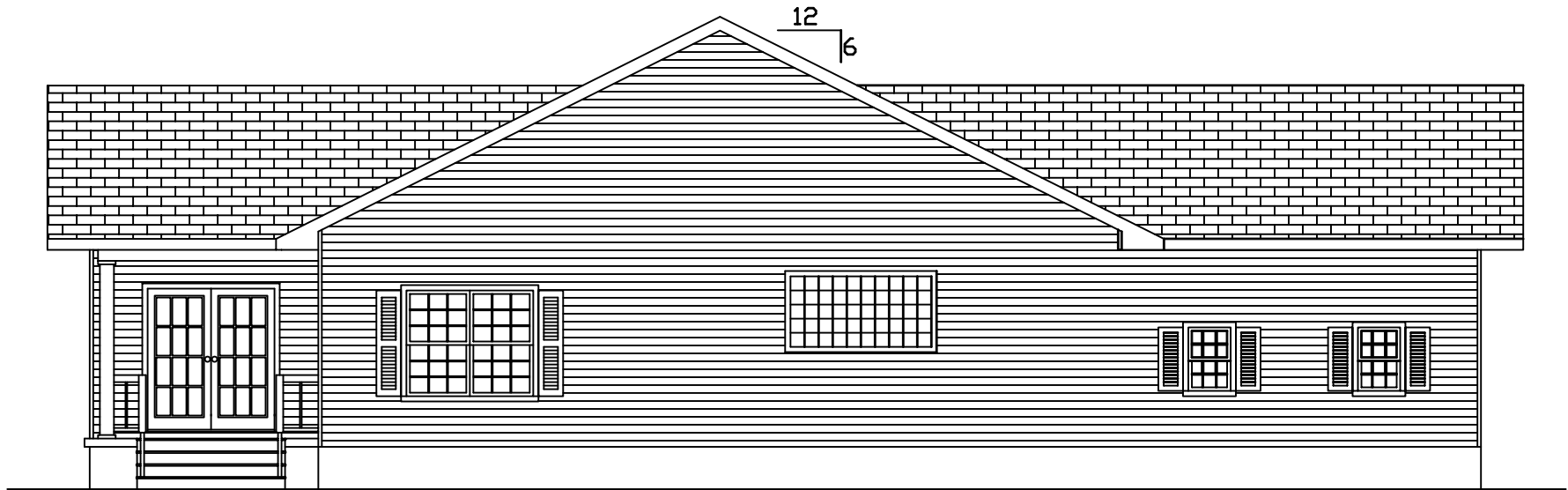


1st Floor

<p>0 1 2 3 4 5 6 7 8 9 10</p> <p>Scale: 3/32" = 1'</p>	<p>Winchester I</p>	<p>EXCALIBUR STEEL STRUCTURES ExcaliburSteel.com 423-624-1047</p>
--	----------------------------	---



Front

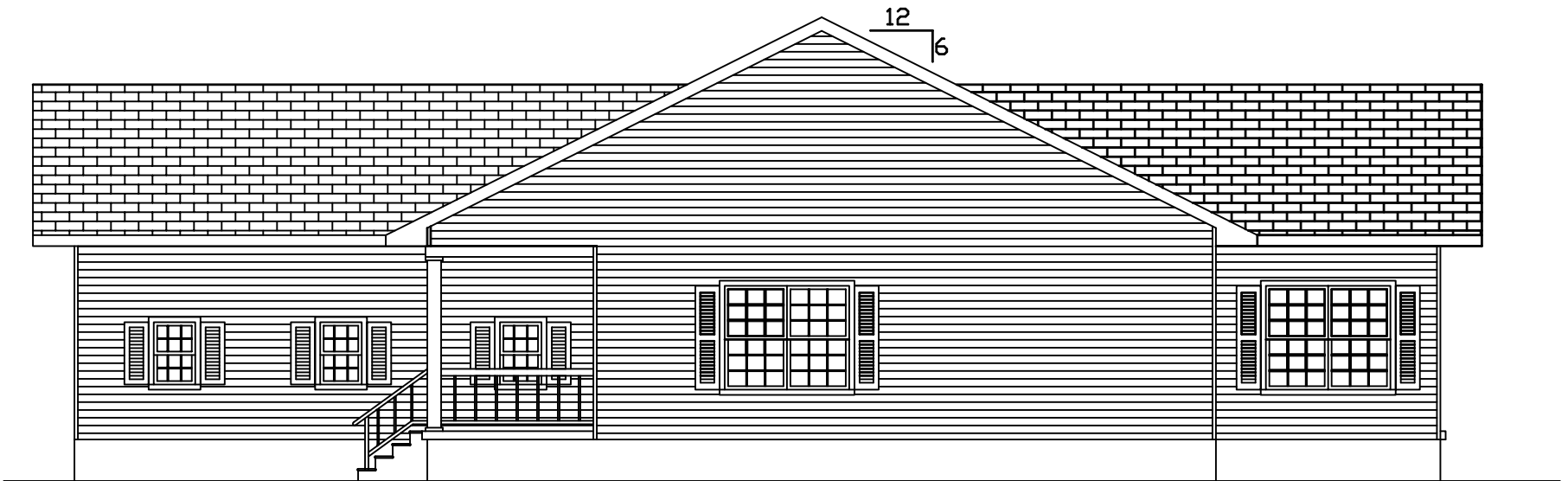


Left

<p>0 1 2 3 4 5 6 7 8 Scale: 1/8" = 1'</p>	<p><u>Winchester I</u></p>	<p>EXCALIBUR STEEL STRUCTURES ExcaliburSteel.com 423-624-1047</p>
---	-----------------------------------	---

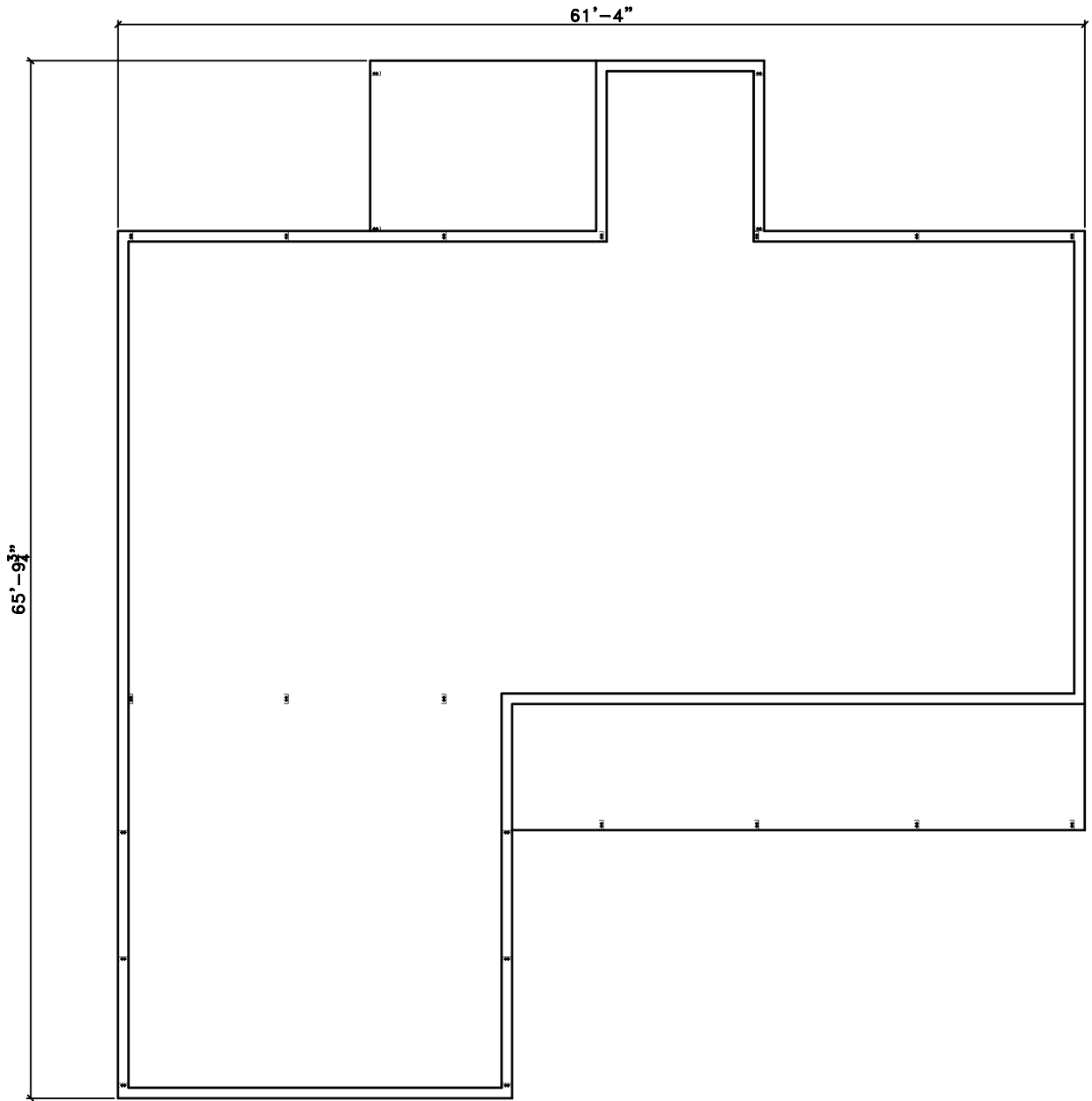


Rear



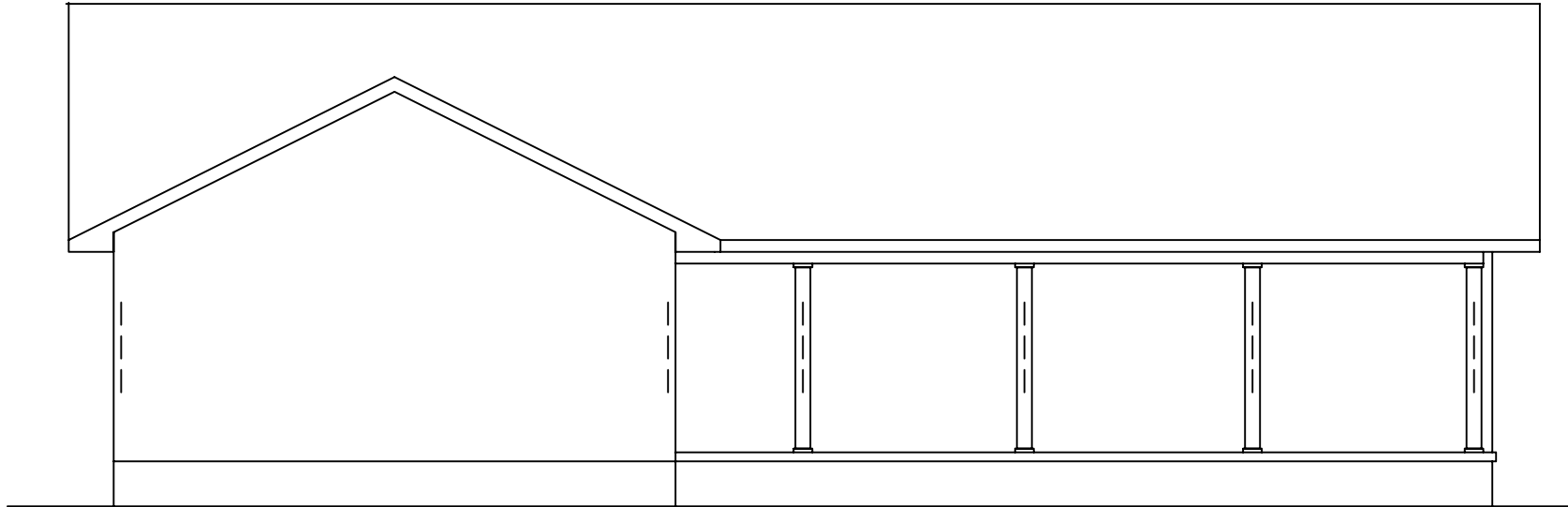
Right

<p>0 1 2 3 4 5 6 7 8</p> <p>Scale: 1/8" = 1'</p>	<p>Winchester I</p>	<p>EXCALIBUR STEEL STRUCTURES ExcaliburSteel.com 423-624-1047</p>
--	----------------------------	---

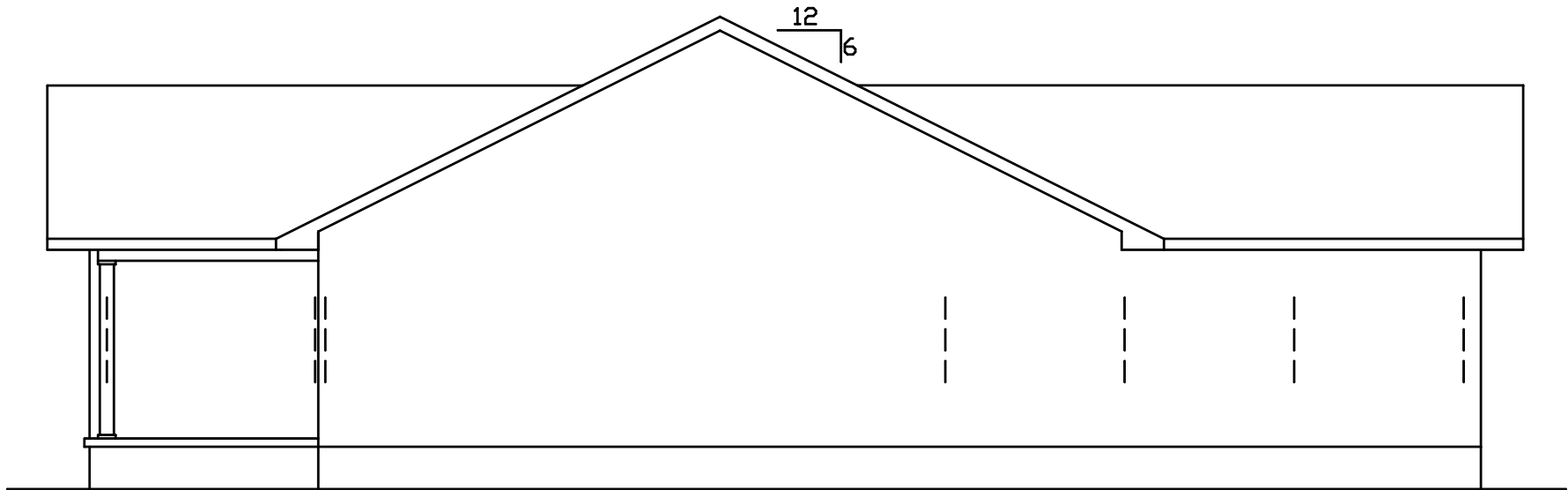


1st Floor

<p>0 1 2 3 4 5 6 7 8 9 10</p> <p>Scale: 3/32" = 1'</p>	<p><u>Winchester I</u></p>	<p>EXCALIBUR STEEL STRUCTURES ExcaliburSteel.com 423-624-1047</p>
--	-----------------------------------	---

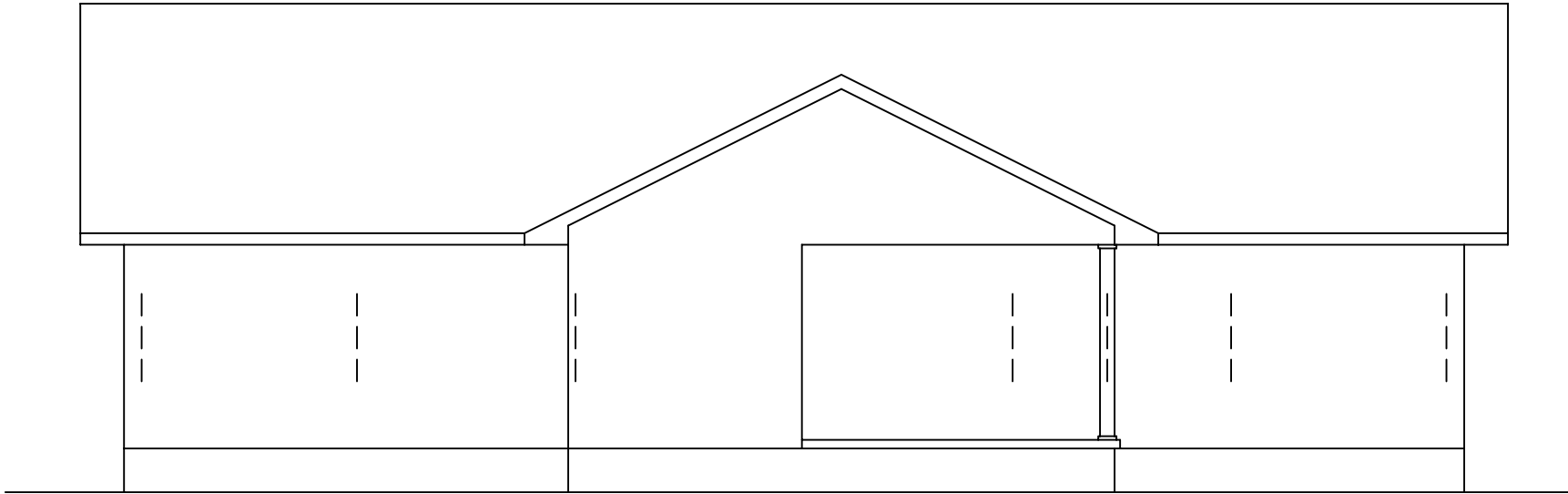


Front

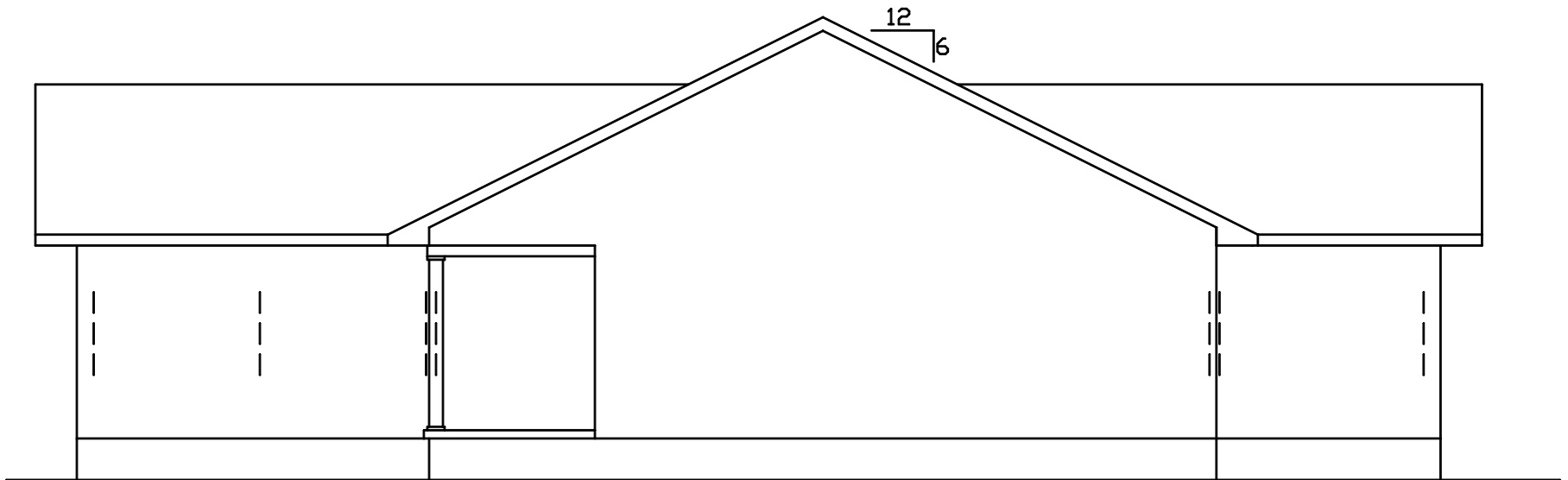


Left

0 1 2 3 4 5 6 7 8 	<u>Winchester I</u>		EXCALIBUR STEEL STRUCTURES ExcaliburSteel.com 423-624-1047
-----------------------	----------------------------	--	---



Rear



Right

	<p><u>Winchester I</u></p>	 <p>EXCALIBUR STEEL STRUCTURES ExcaliburSteel.com 423-624-1047</p>
--	-----------------------------------	---