



[← BACK](#)   [CONTENTS](#)   [NEXT →](#)

## Tullahoma II



Copyright© 1998 Excalibur Steel Structures of Tennessee, LLC.

### Specifications\*

Living Area, 1st Floor:	1,585 s.f.	Dimensions (Overall):	61'-4" x 42'-0"
Living Area, 2nd Floor:	n/a	Roof Pitch:	6/12, 3/12
Utility:	109 s.f.	Ceiling Height, 1st Flr.:	8'
Garage:	514 s.f.	Ceiling Height, 2nd Flr.:	n/a
Porch, Front:	189 s.f.	Bedrooms:	3
Porch, Rear:	n/a	Baths:	2
<b>Total Area:</b>	<b>2,397 s.f.</b>	Fireplace:	n/a
Basement (optional):	1,368 s.f.	Standard Model Price:	<a href="#">Price List</a>



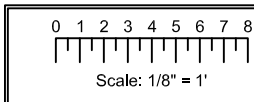
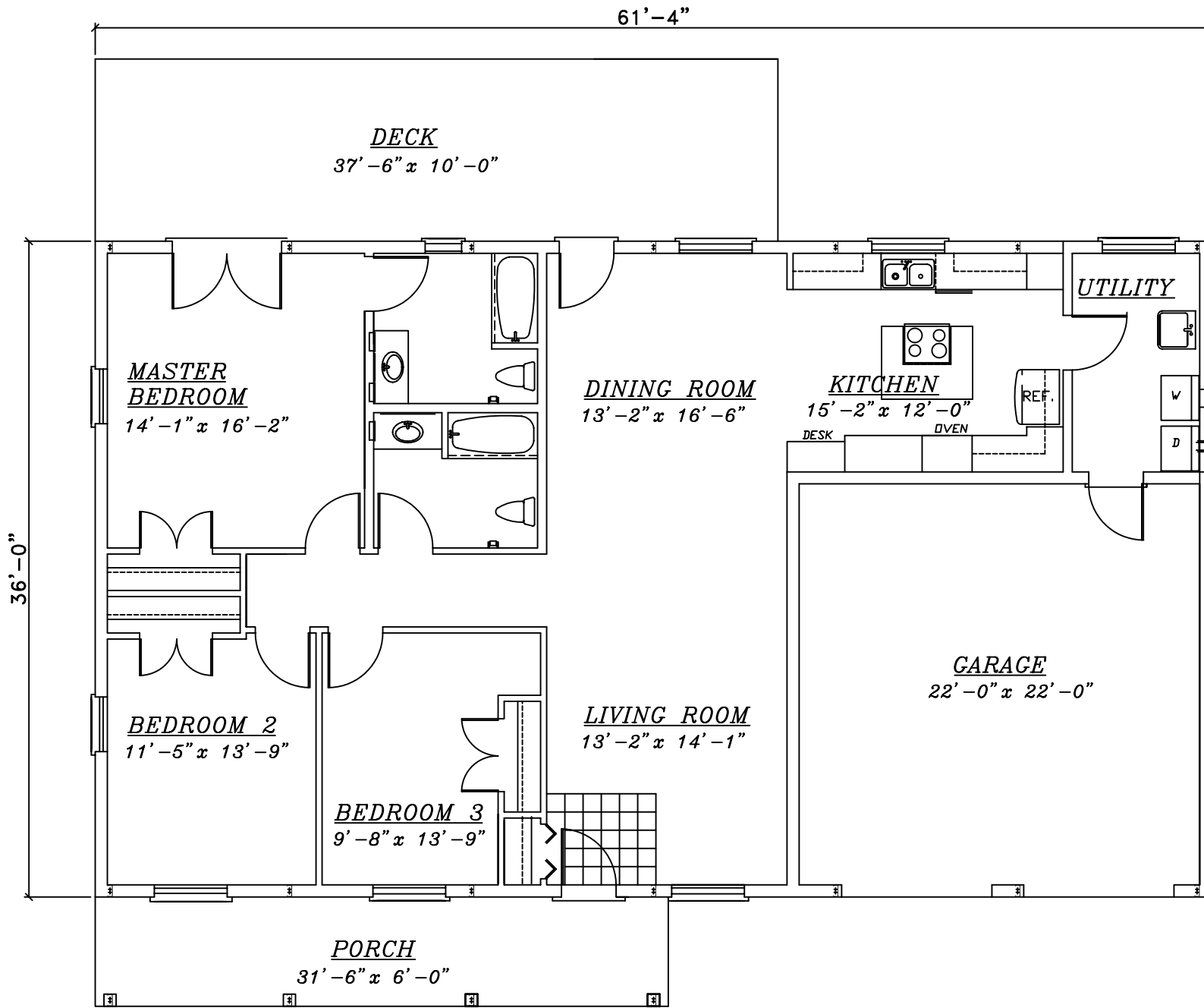
[Help/info](#)

<a href="#">Front/ Left Elevation</a>	<a href="#">Rear/ Right Elevation</a>
<a href="#">1st Floor Plan</a>	<a href="#">2nd Floor Plan</a>

\*Values are approximate



[RETURN TO HOME PAGE](#)



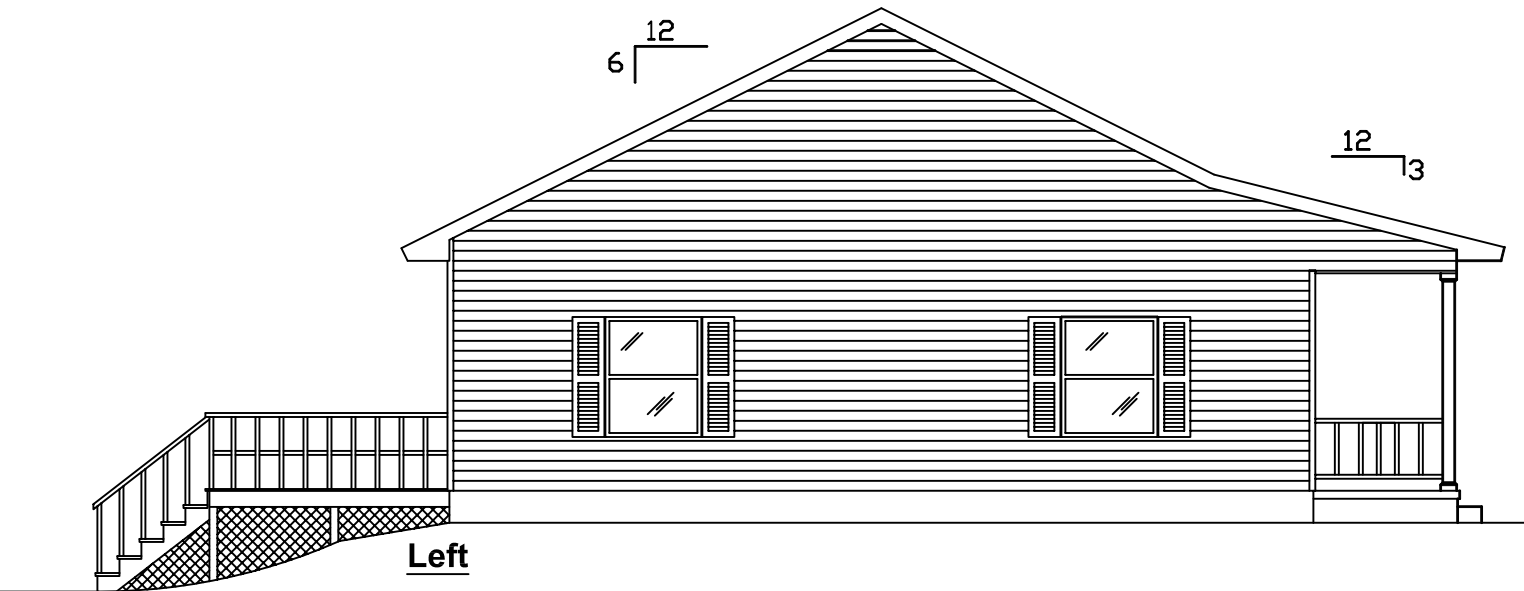
**Tulahoma II**



EXCALIBUR  
STEEL STRUCTURES  
ExcaliburSteel.com  
423-624-1047

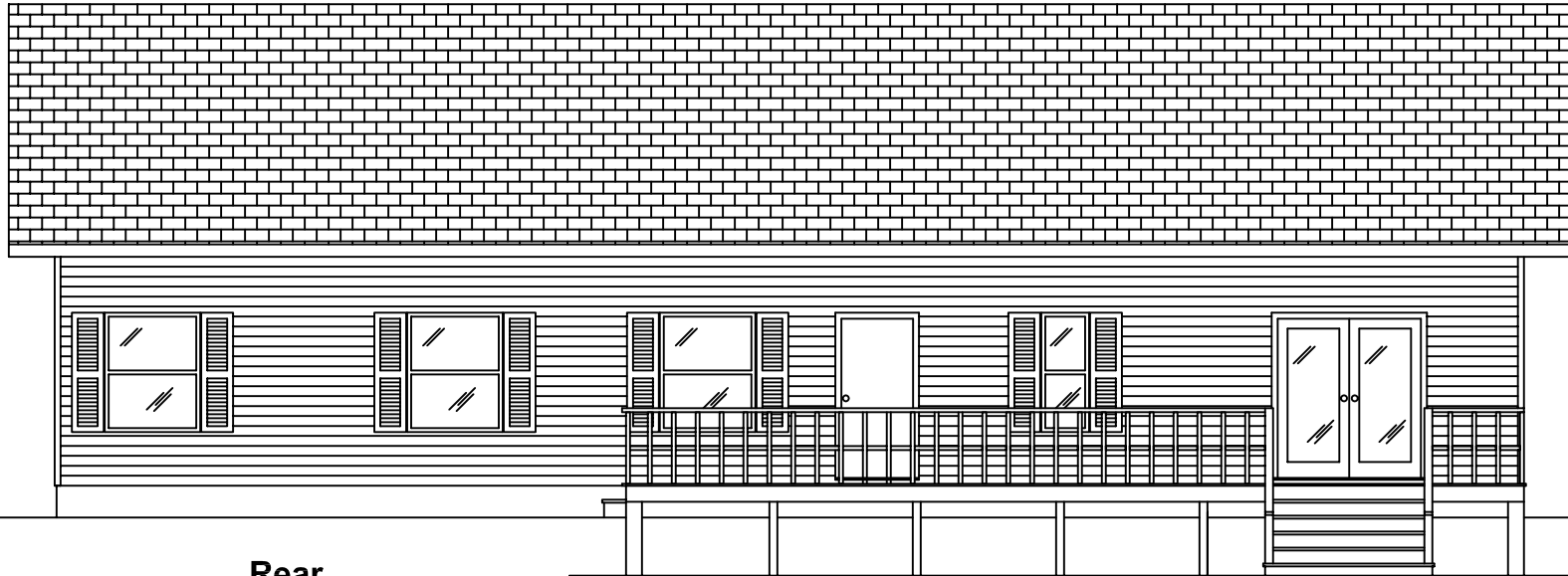


**Front**

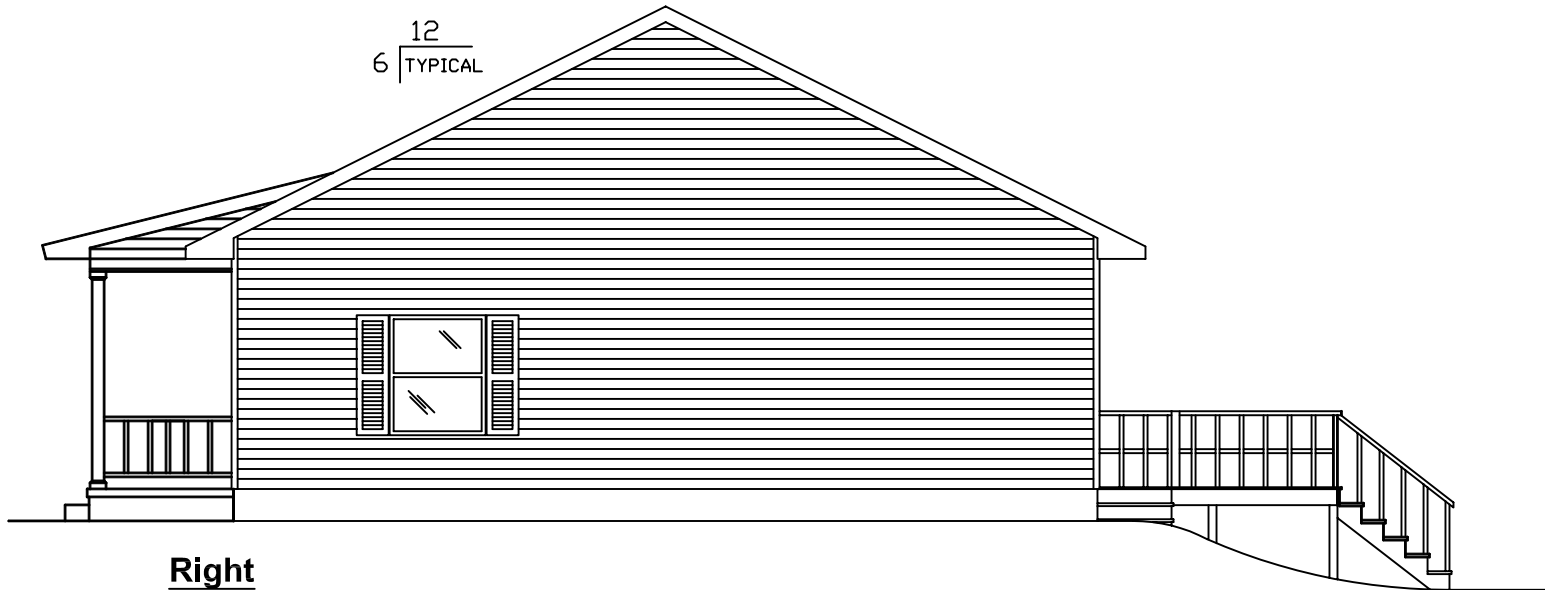


**Left**

<p>0 1 2 3 4 5 6 7 8</p> <p>Scale: 1/8" = 1'</p>	<p><b>Tullahoma II</b></p>	<p>EXCALIBUR STEEL STRUCTURES ExcaliburSteel.com 423-624-1047</p>
--	----------------------------	---

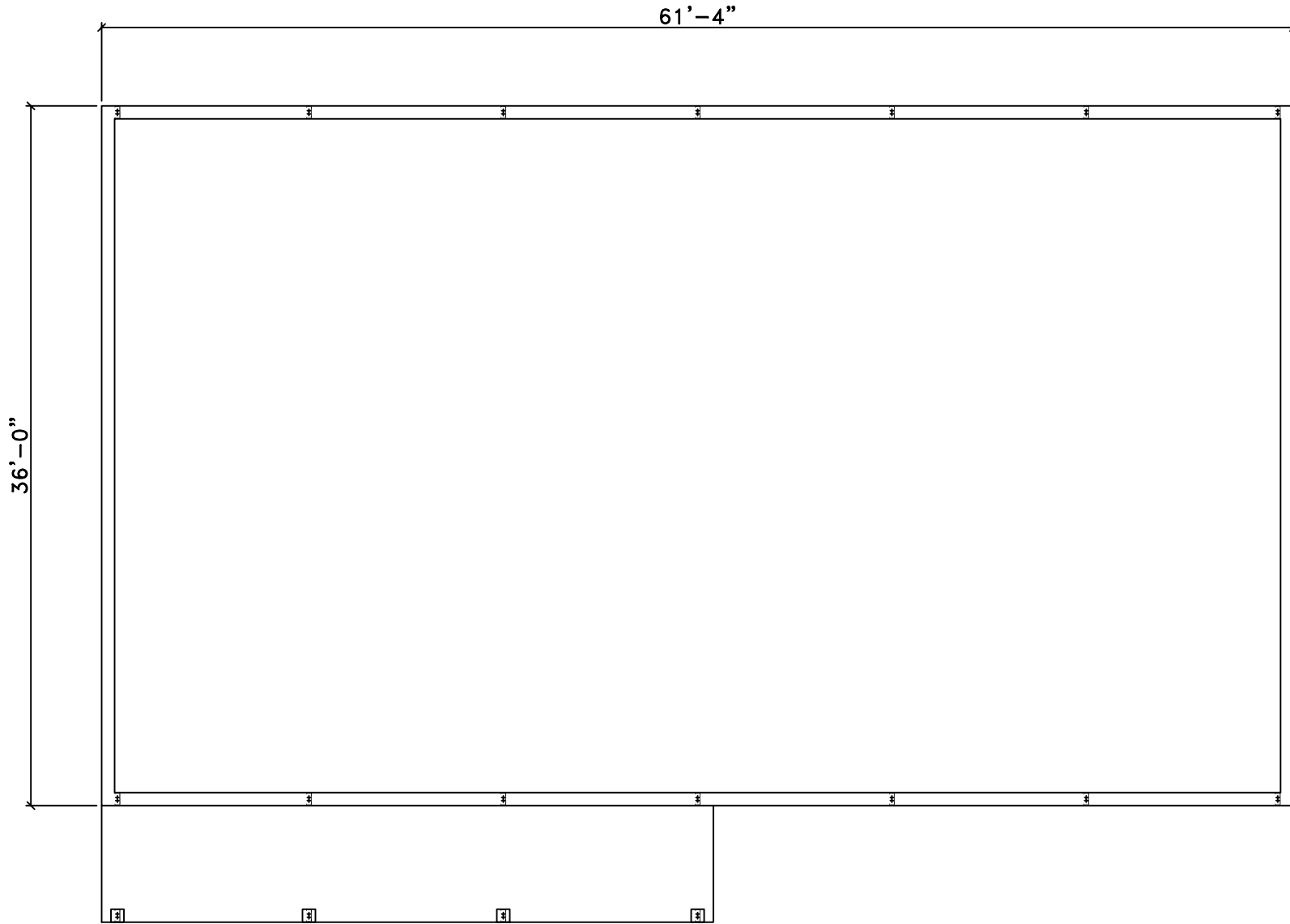


**Rear**



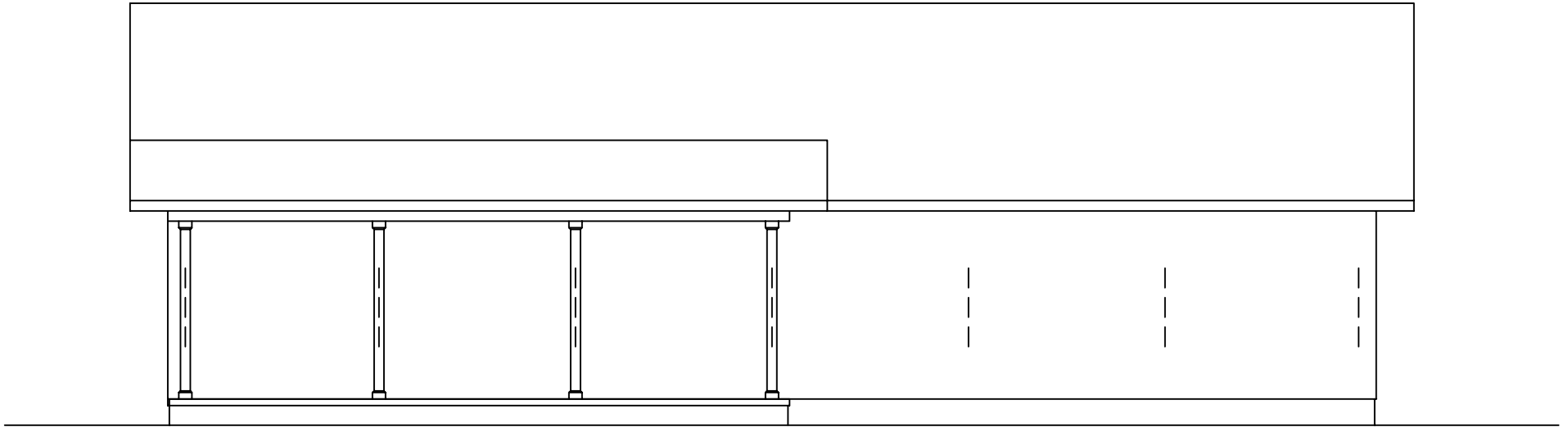
**Right**

<p>0 1 2 3 4 5 6 7 8 Scale: 1/8" = 1'</p>	<p><b>Tullahoma II</b></p>	<p>EXCALIBUR STEEL STRUCTURES ExcaliburSteel.com 423-624-1047</p>
---	----------------------------	---

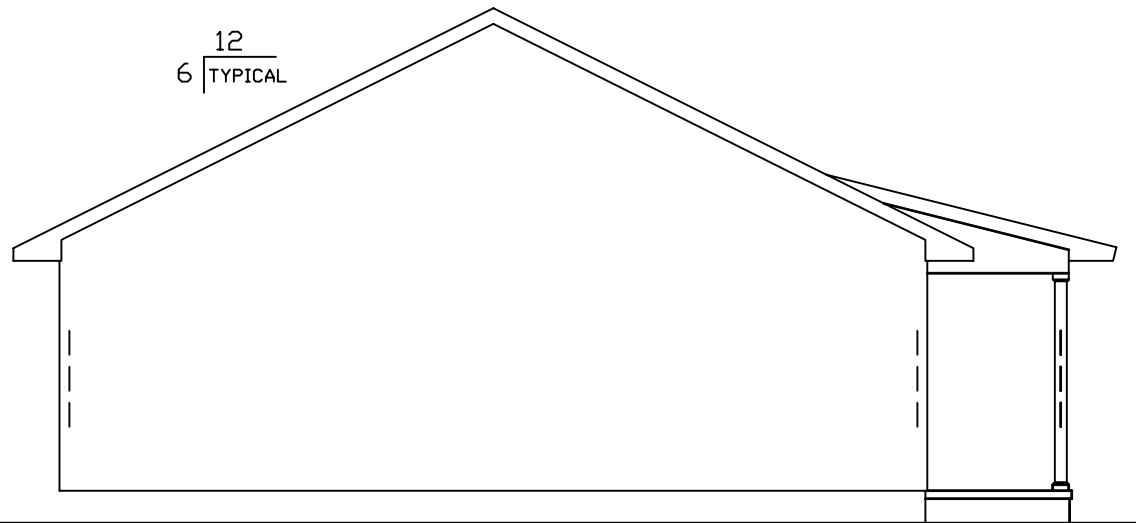


**1st Floor**

	<p><b>Tullahoma II</b></p>	<p>EXCALIBUR STEEL STRUCTURES ExcaliburSteel.com 423-624-1047</p>
--	----------------------------	---

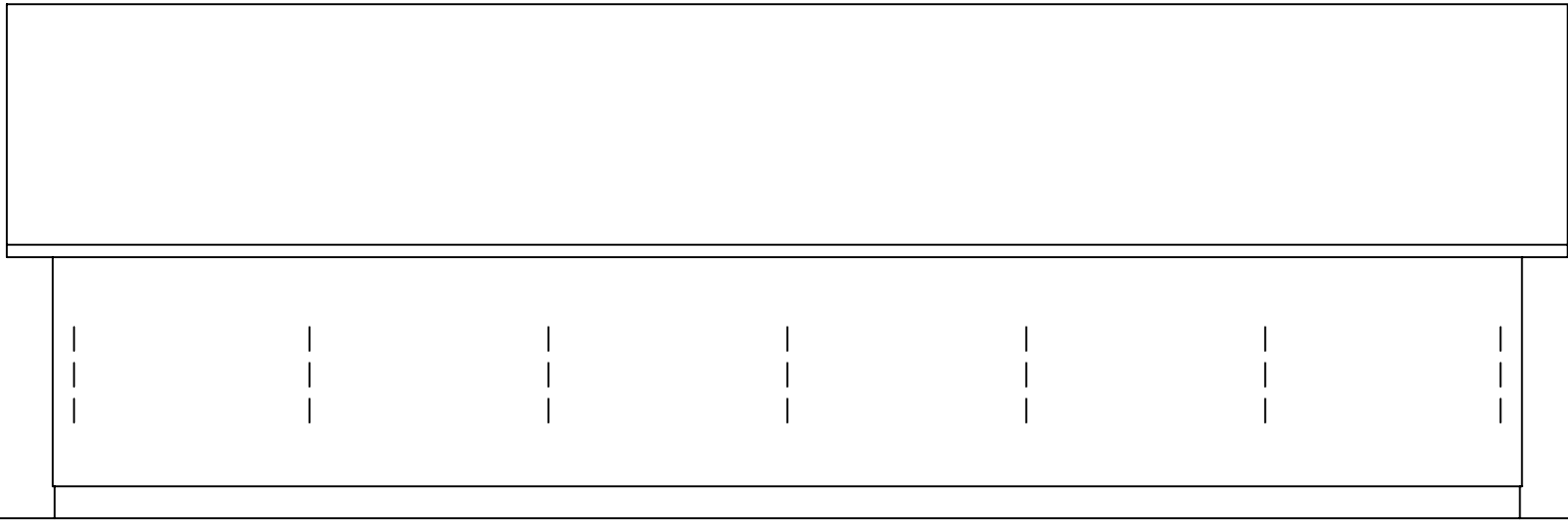


**Front**

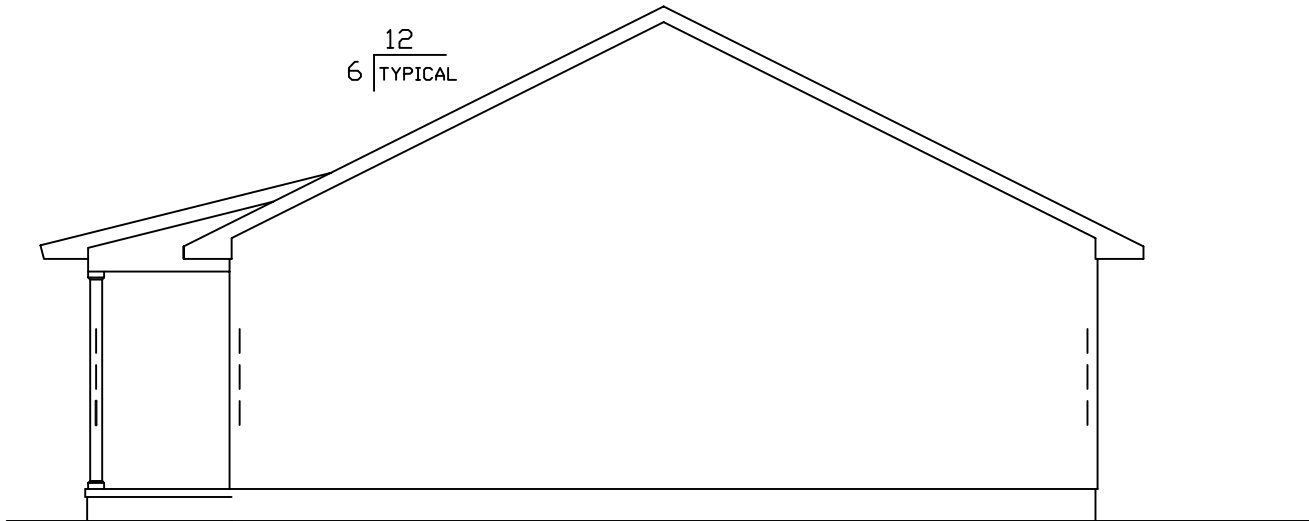


**Left**

0 1 2 3 4 5 6 7 8 	<b>Tullahoma II</b>		EXCALIBUR STEEL STRUCTURES ExcaliburSteel.com 423-624-1047
-----------------------	---------------------	--	---



**Rear**



**Right**

<p>Scale: 1/8" = 1'</p>	<p><b><u>Tullahoma II</u></b></p>	 <p>EXCALIBUR STEEL STRUCTURES ExcaliburSteel.com 423-624-1047</p>
-------------------------	-----------------------------------	---