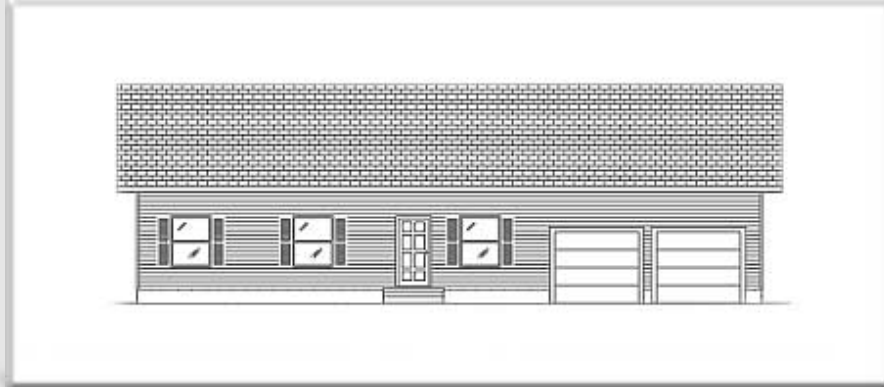




[← BACK](#) [CONTENTS](#) [NEXT →](#)

Tullahoma I



Copyright© 1998 Excalibur Steel Structures of Tennessee, LLC.

Specifications*

Living Area, 1st Floor:	1,585 s.f.	Dimensions (Overall):	61'-4" x 36'-0"
Living Area, 2nd Floor:	n/a	Roof Pitch:	6/12
Utility:	109 s.f.	Ceiling Height, 1st Flr.:	8'
Garage:	514 s.f.	Ceiling Height, 2nd Flr.:	n/a
Porch, Front:	n/a	Bedrooms:	3
Porch, Rear:	n/a	Baths:	2
Total Area:	2,208 s.f.	Fireplace:	n/a
Basement (optional):	1,392 s.f.	Standard Model Price:	Price List



[Help/info](#)

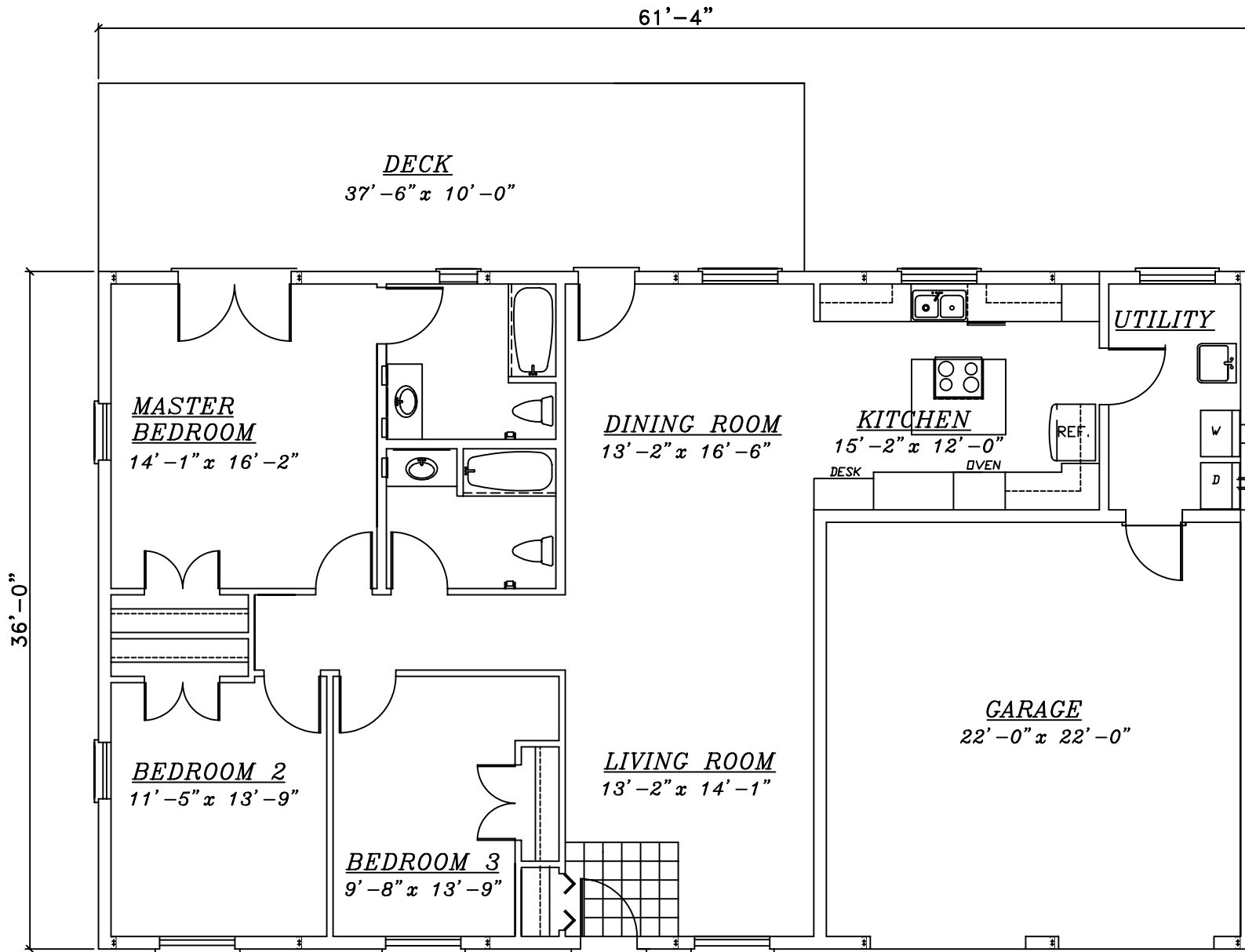
Front/ Left Elevation	Rear/ Right Elevation
1st Floor Plan	2nd Floor Plan

Exterior Options:

Exterior Option 1	Exterior Option 2
-----------------------------------	-----------------------------------

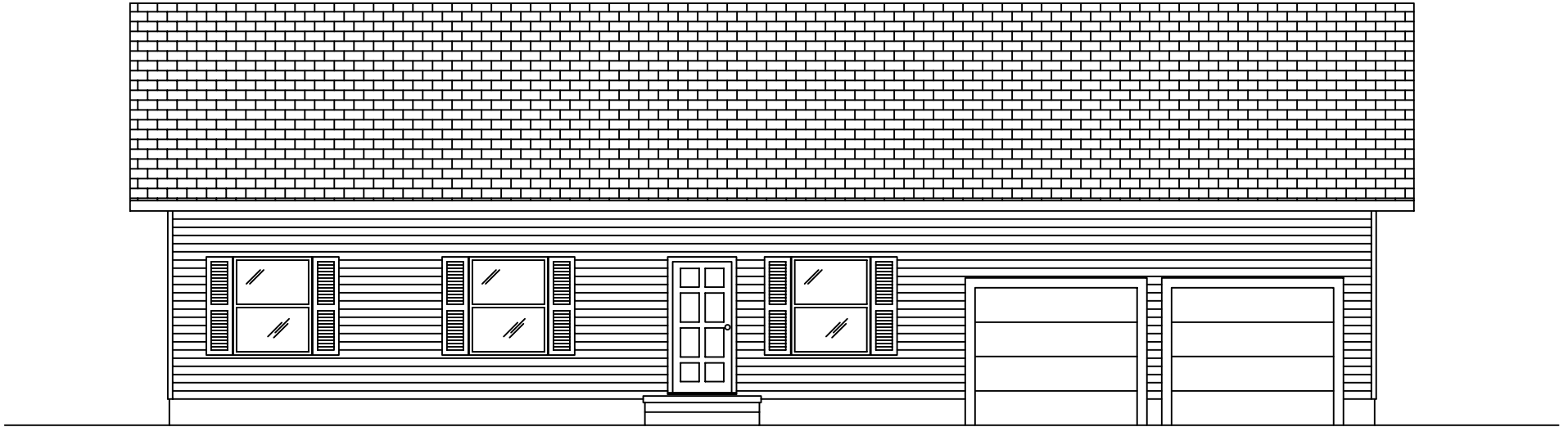
*Values are approximate



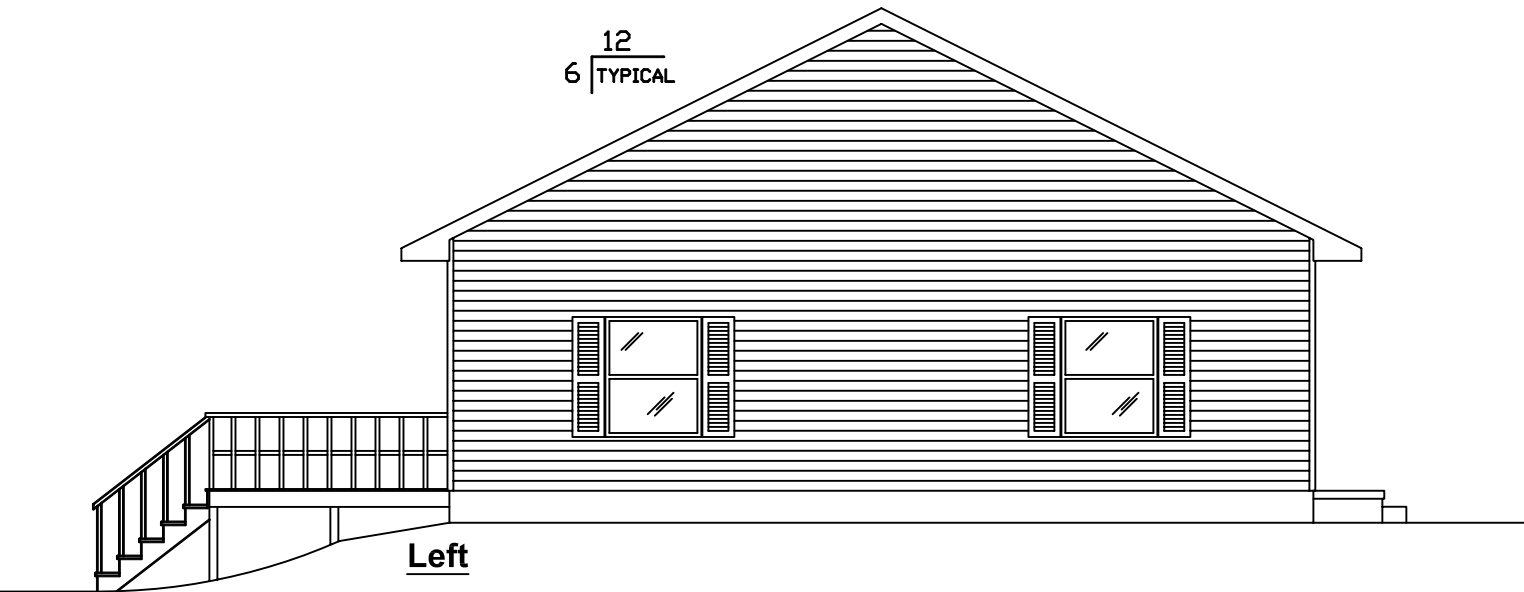


1st Floor

<p>0 1 2 3 4 5 6 7 8 Scale: 1/8" = 1'</p>	<p>Tullahoma I</p>	<p>EXCALIBUR STEEL STRUCTURES ExcaliburSteel.com 423-624-1047</p>
---	---------------------------	---

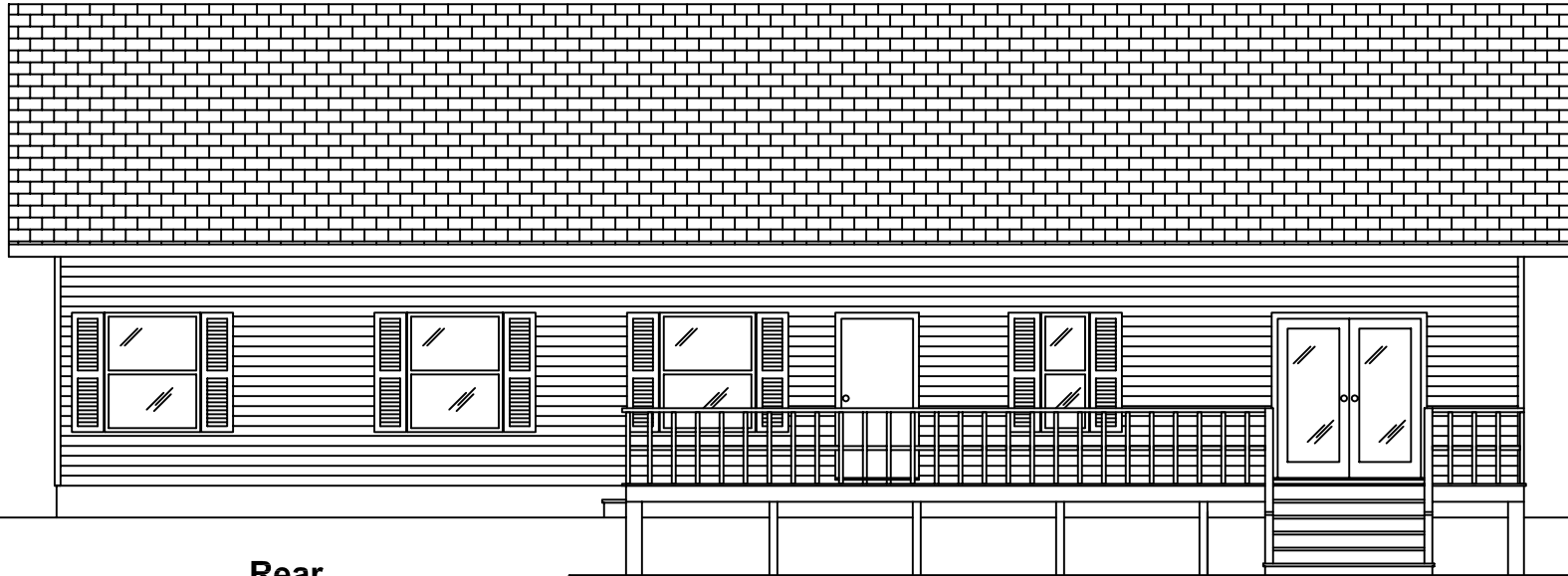


Front

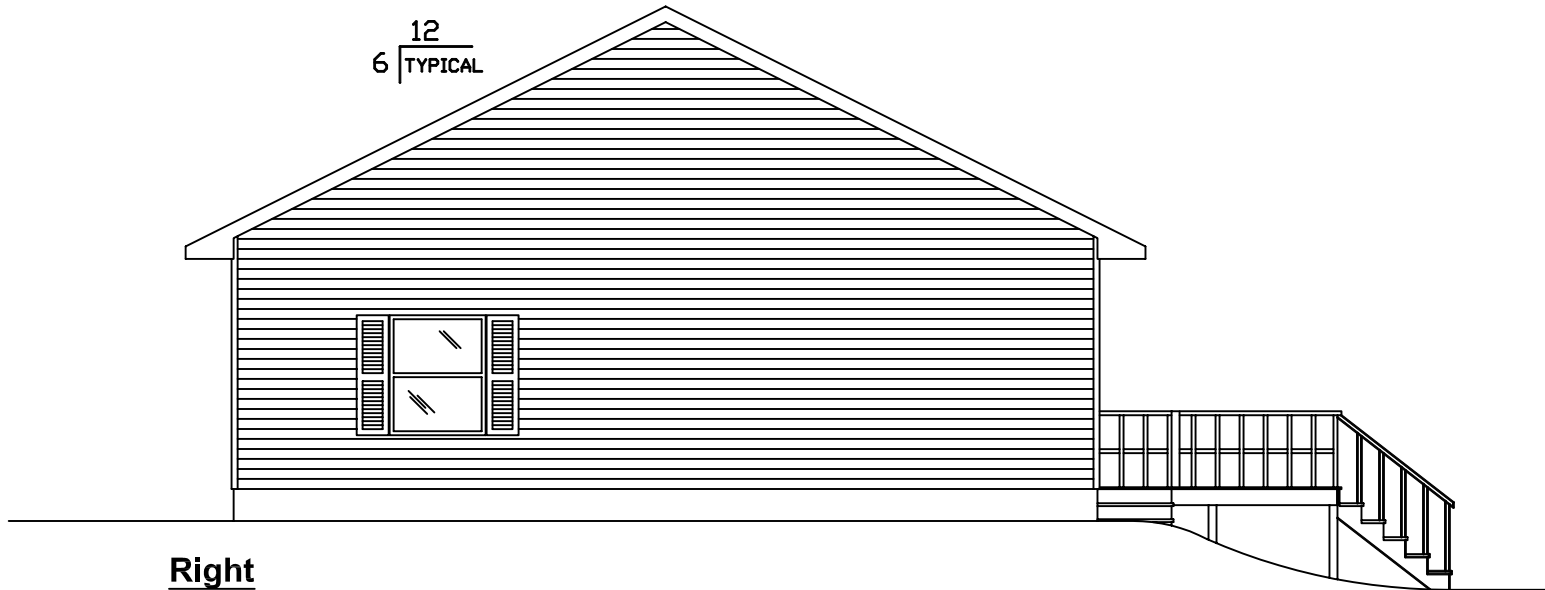


Left

<p>0 1 2 3 4 5 6 7 8 Scale: 1/8" = 1'</p>	<p>Tullahoma I</p>	<p>EXCALIBUR STEEL STRUCTURES ExcaliburSteel.com 423-624-1047</p>
---	---------------------------	---

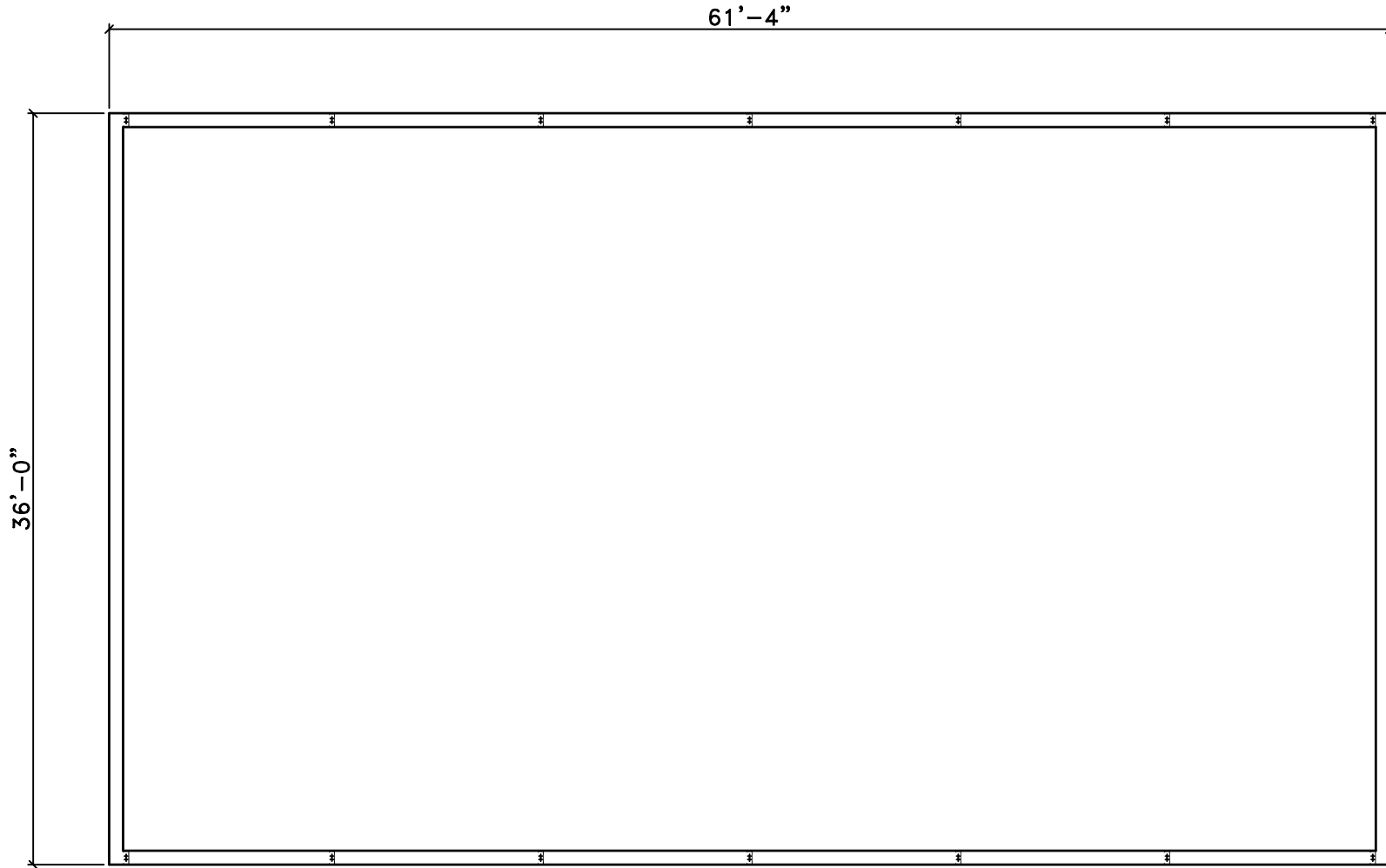


Rear



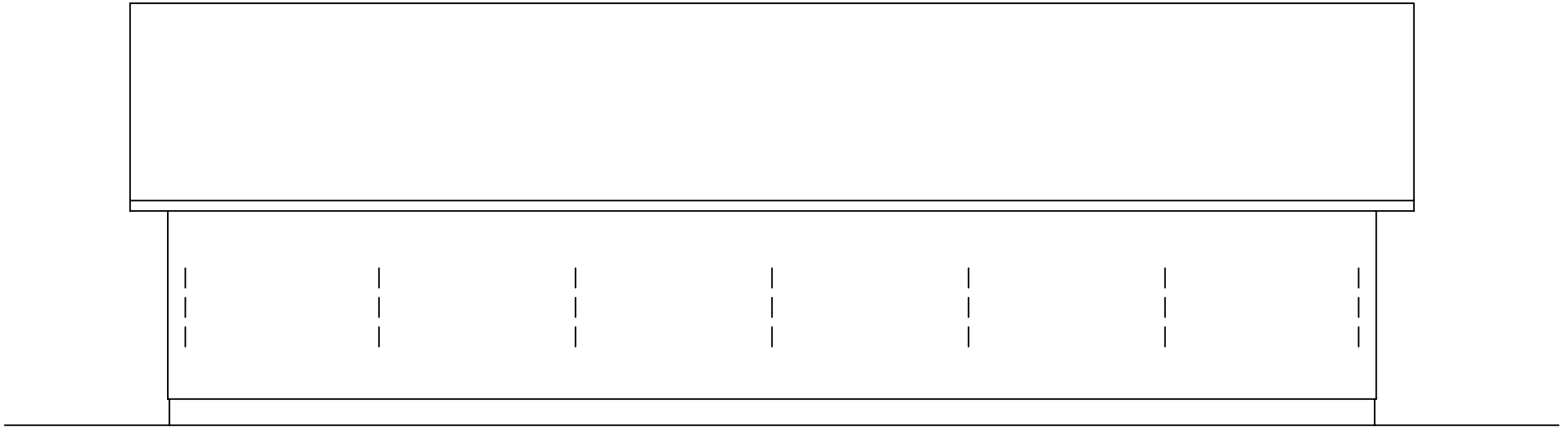
Right

<p>0 1 2 3 4 5 6 7 8</p> <p>Scale: 1/8" = 1'</p>	<p>Tullahoma I</p>	<p>EXCALIBUR STEEL STRUCTURES ExcaliburSteel.com 423-624-1047</p>
--	---------------------------	---

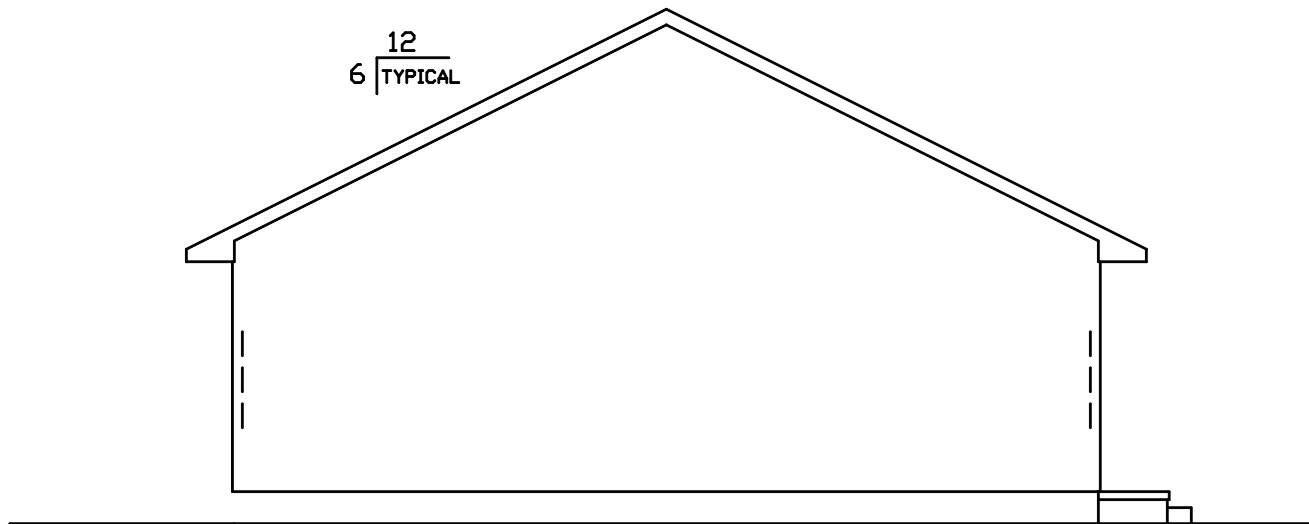


1st Floor

<p>0 1 2 3 4 5 6 7 8 Scale: 1/8" = 1'</p>	<p><u>Tulahoma I</u></p>	<p>EXCALIBUR STEEL STRUCTURES ExcaliburSteel.com 423-624-1047</p>
---	---------------------------------	---

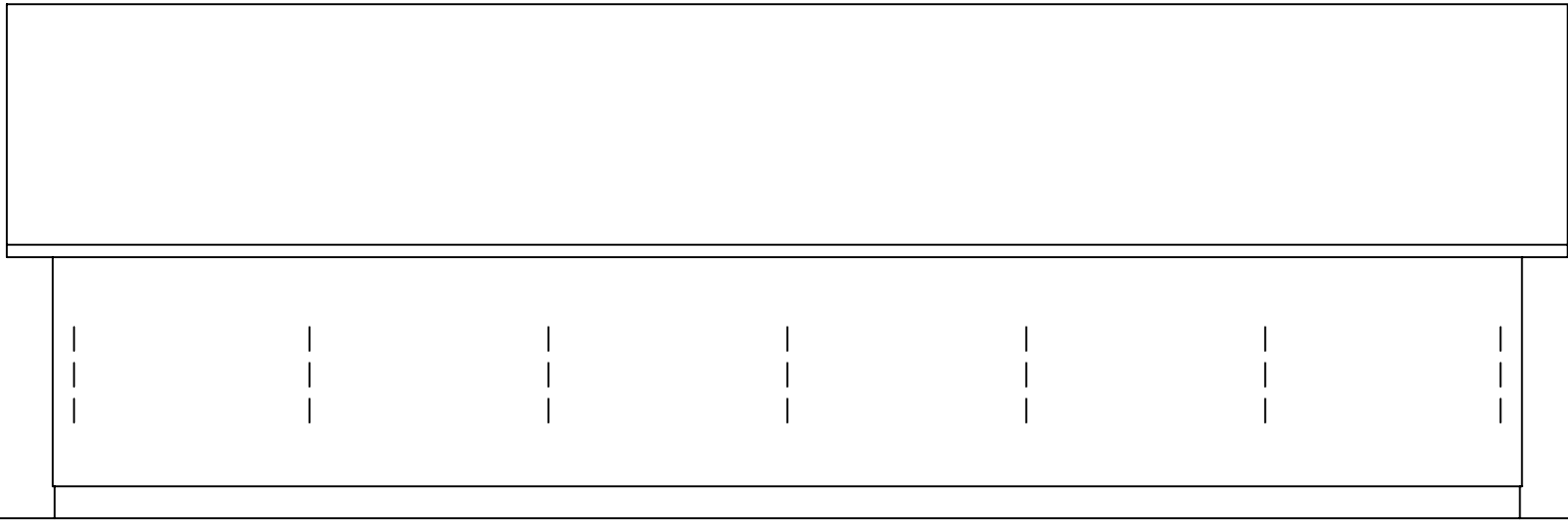


Front

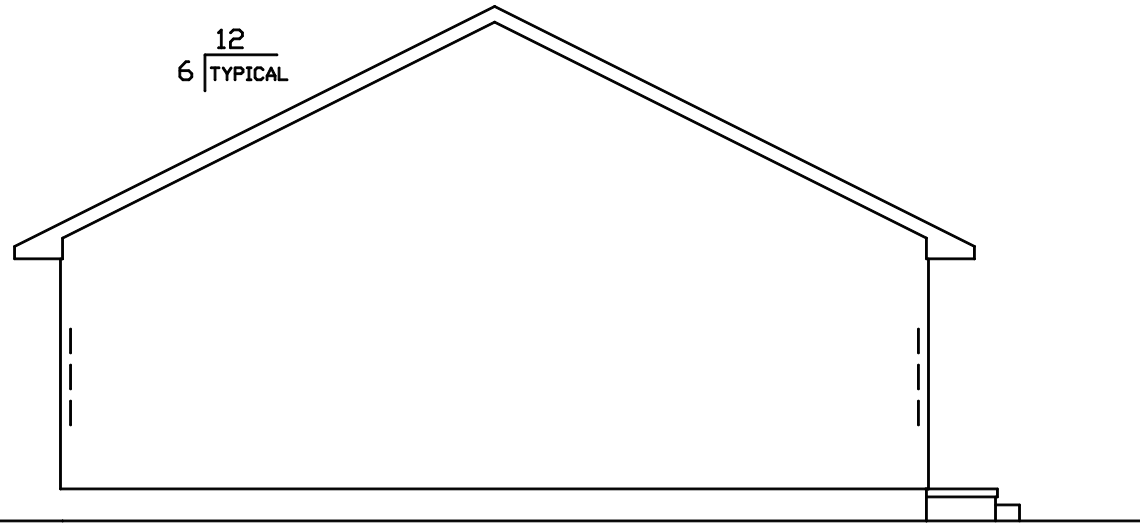


Left

<p>0 1 2 3 4 5 6 7 8</p> <p>Scale: 1/8" = 1'</p>	<p><u>Tullahoma I</u></p>	<p>EXCALIBUR STEEL STRUCTURES ExcaliburSteel.com 423-624-1047</p>
--	----------------------------------	---



Rear



Right

<p>0 1 2 3 4 5 6 7 8 Scale: 1/8" = 1'</p>	<p><u>Tulahoma I</u></p>		<p>EXCALIBUR STEEL STRUCTURES ExcaliburSteel.com 423-624-1047</p>
---	---------------------------------	--	---