



[← BACK](#)   [CONTENTS](#)   [NEXT →](#)

## Stones River



Copyright© 2003 Excalibur Steel Structures of Tennessee, LLC.

### Specifications\*

Living Area, 1st Floor:	2,188 s.f.	Dimensions (Overall):	81'-4" x 71'-0"
Living Area, 2nd Floor:	800 s.f.	Roof Pitch:	9/12
		Ceiling Height, 1st Flr.:	9'
Garage:	601 s.f.	Ceiling Height, 2nd Flr.:	8'
Porch, Front:	660 s.f.	Bedrooms:	4
Porch, Rear:	n/a	Baths:	3
<b>Total Area:</b>	4,249 s.f.	Fireplace:	1
Basement (optional):	2,138 s.f.	Standard Model Price:	<a href="#">Price List</a>



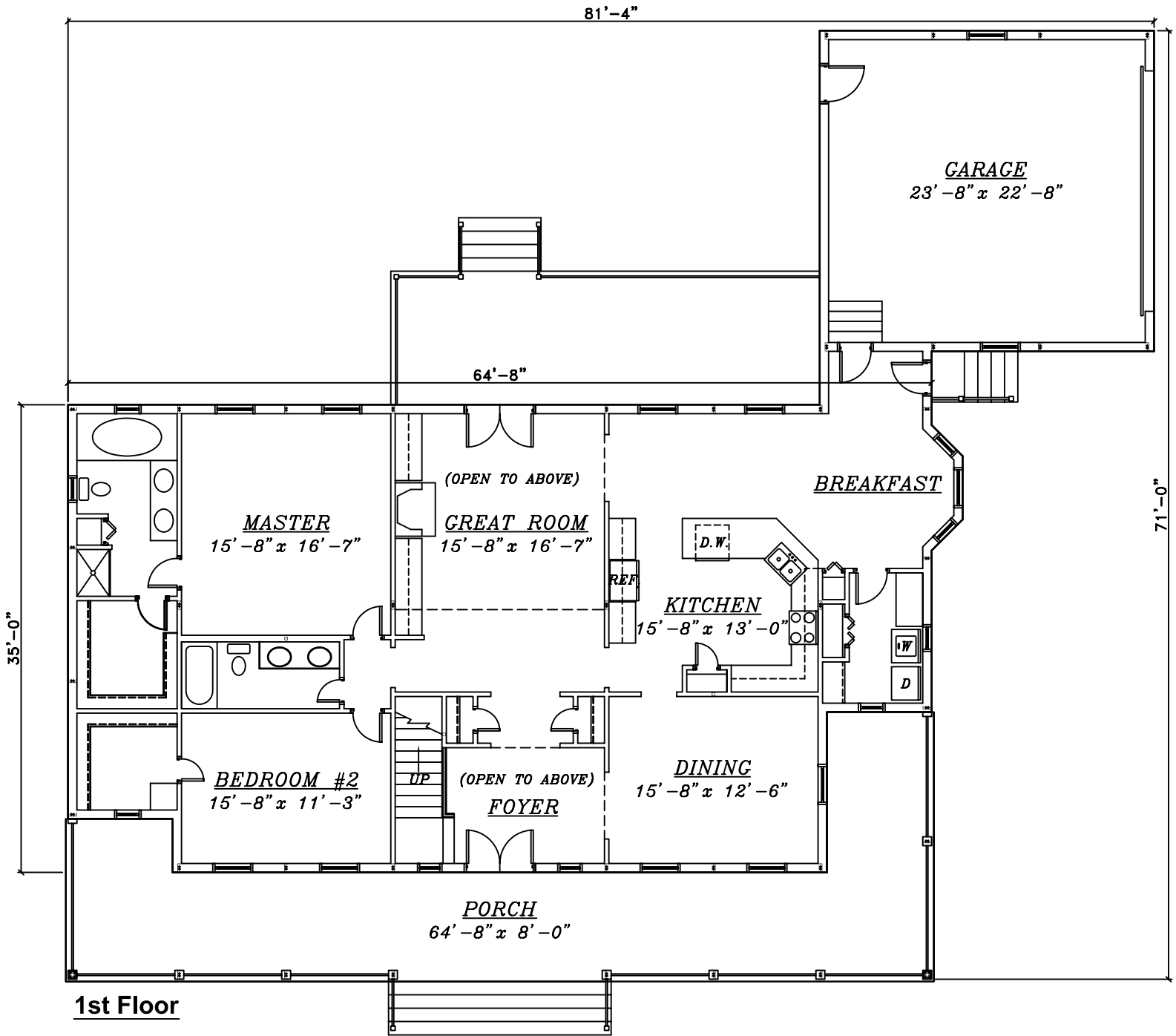
[Help/info](#)

<a href="#">Front/ Left Elevation</a>	<a href="#">Rear/ Right Elevation</a>
<a href="#">1st Floor Plan</a>	<a href="#">2nd Floor Plan</a>

\*Values are approximate

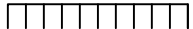


[RETURN TO HOME PAGE](#)



**1st Floor**

0 1 2 3 4 5 6 7 8 9 10

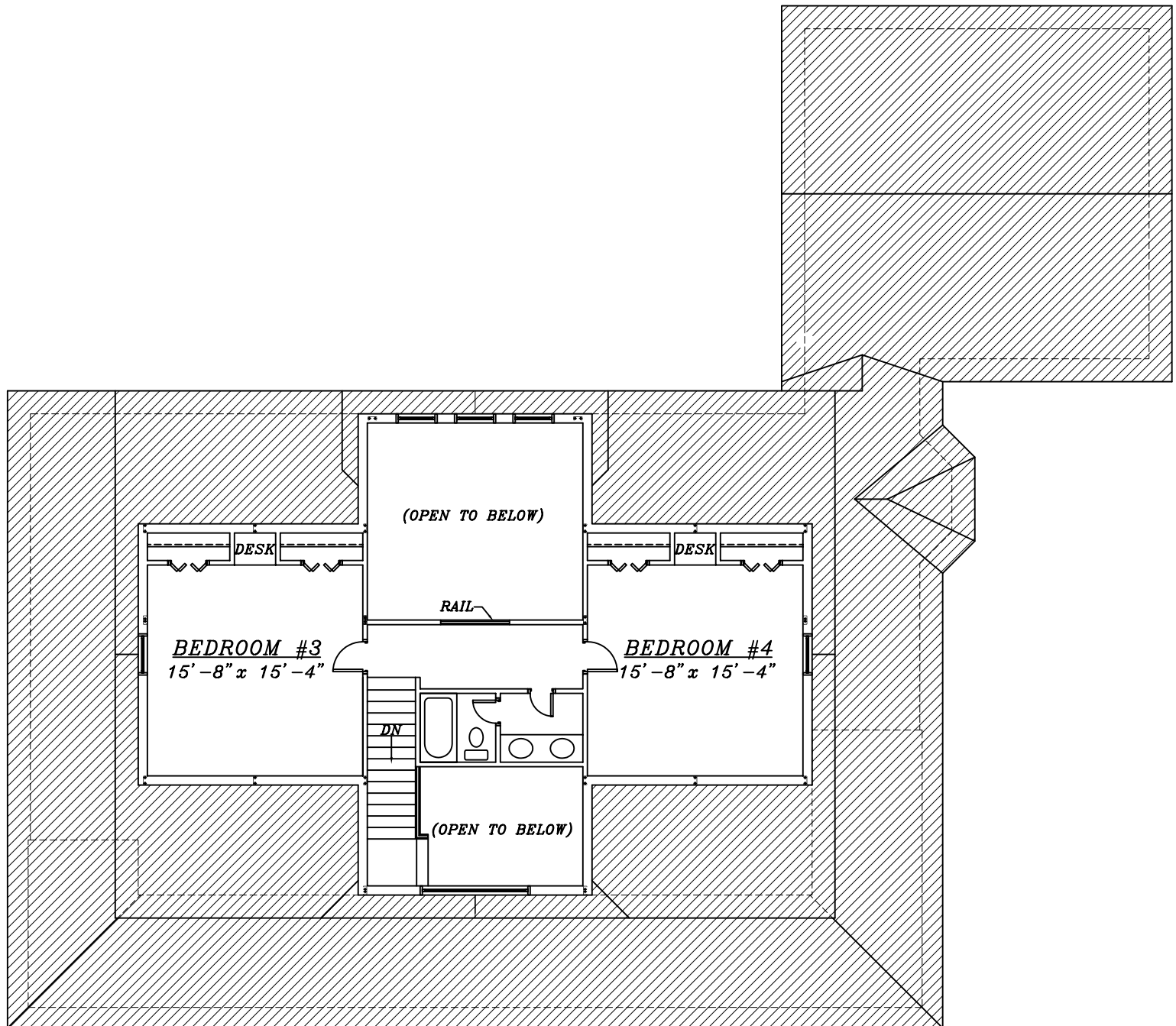


Scale: 3/32" = 1'

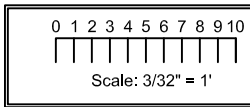
**Stones River**



EXCALIBUR  
STEEL STRUCTURES  
ExcaliburSteel.com  
423-624-1047



**2nd Floor**



**Stones River**



EXCALIBUR  
 STEEL STRUCTURES  
 ExcaliburSteel.com  
 423-624-1047



**Front**



**Left**

<p>0 1 2 3 4 5 6 7 8 9 10</p> <p>Scale: 3/32" = 1'</p>	<p><b>Stones River</b></p>	<p>EXCALIBUR STEEL STRUCTURES ExcaliburSteel.com 423-624-1047</p>
--	----------------------------	---

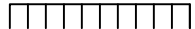


**Rear**



**Right**

0 1 2 3 4 5 6 7 8 9 10

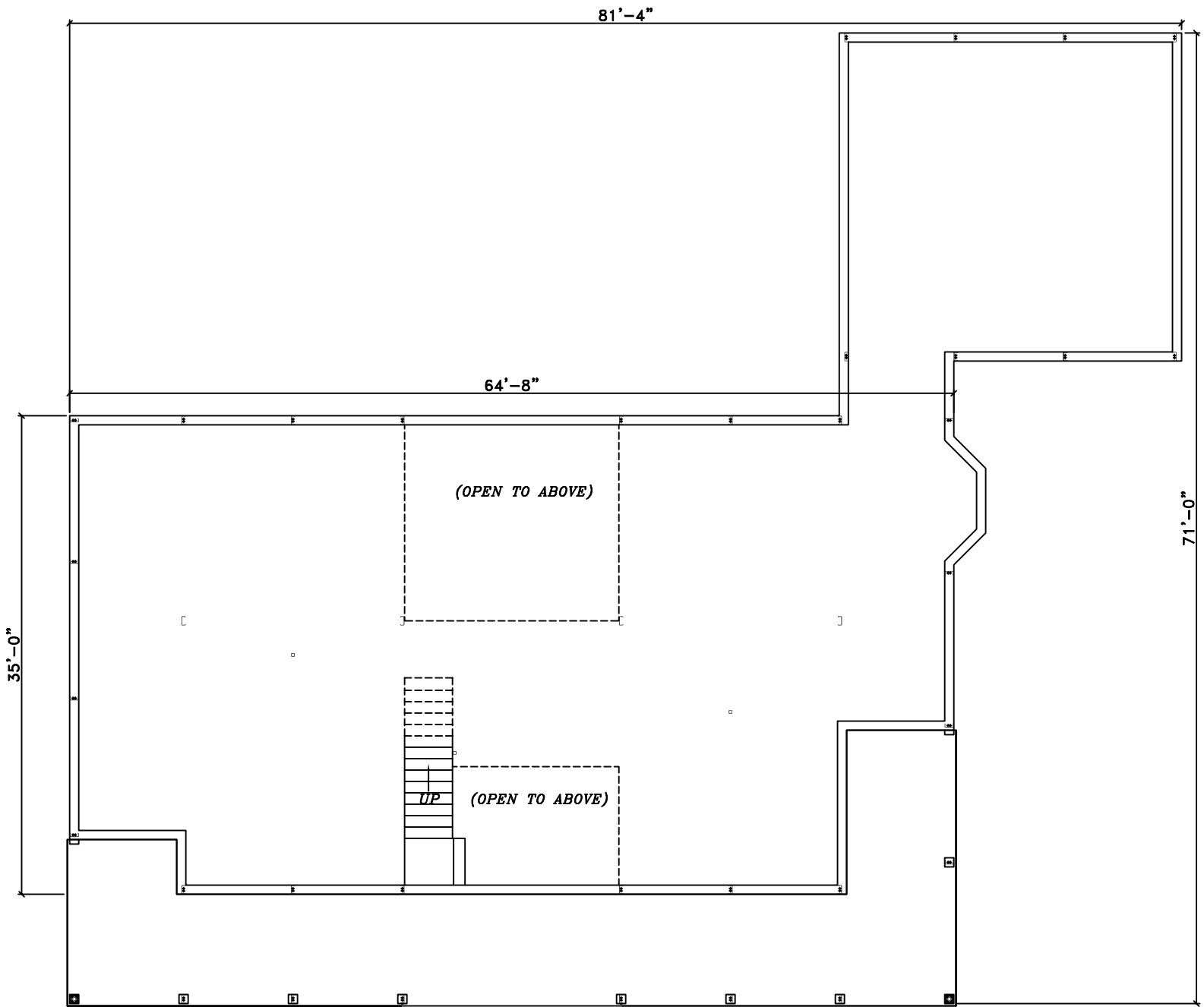


Scale: 3/32" = 1'

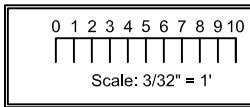
**Stones River**



EXCALIBUR  
STEEL STRUCTURES  
ExcaliburSteel.com  
423-624-1047



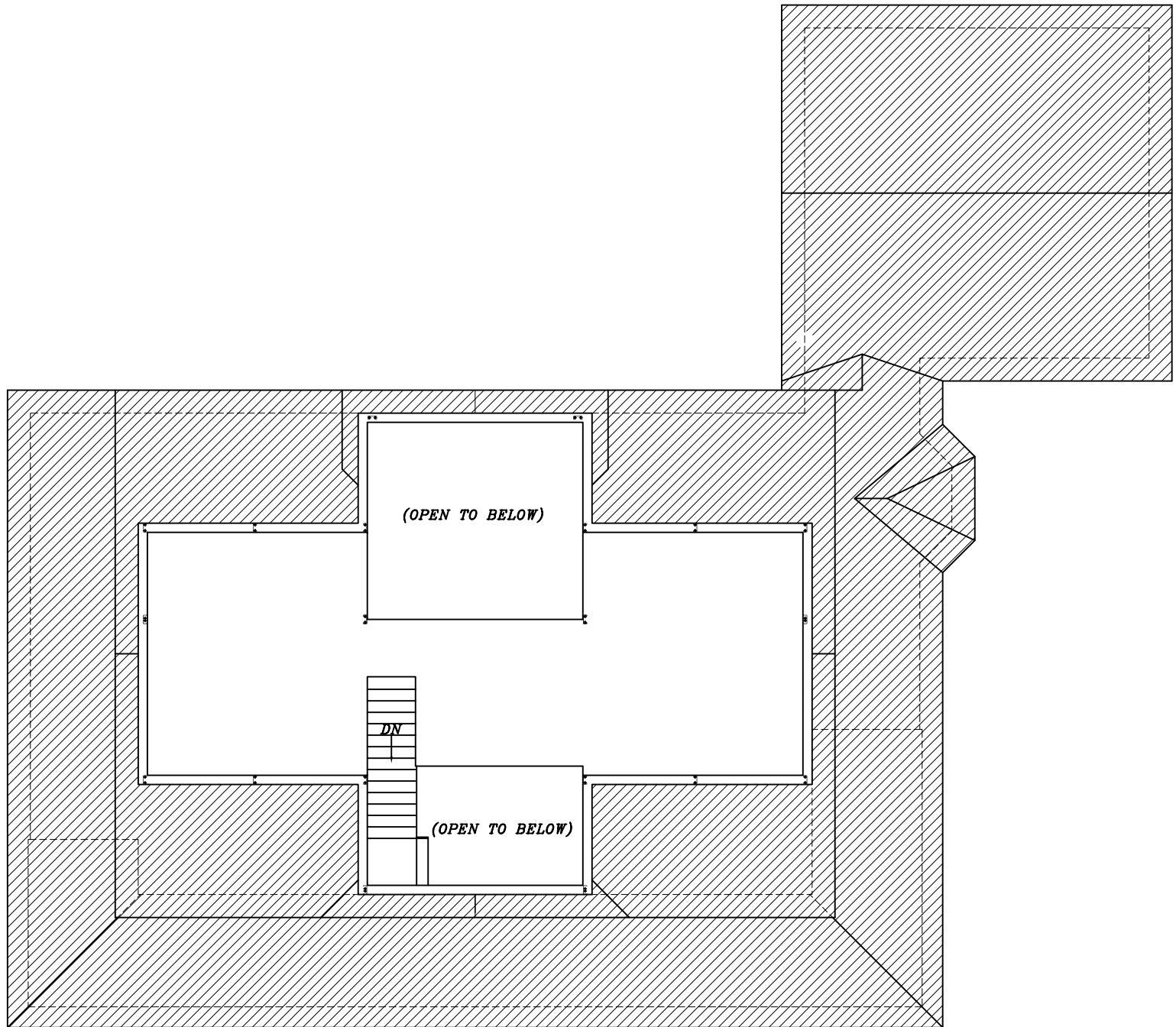
**1st Floor**



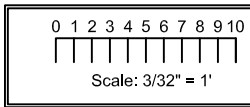
**Stones River**



EXCALIBUR  
STEEL STRUCTURES  
ExcaliburSteel.com  
423-624-1047



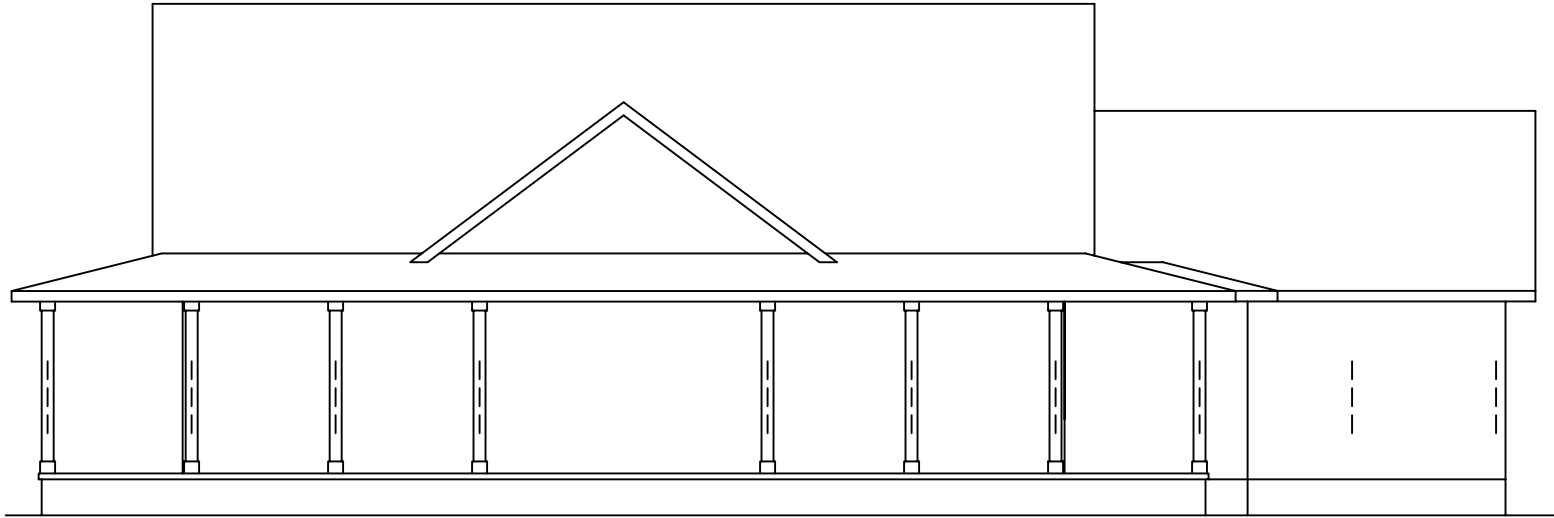
**2nd Floor**



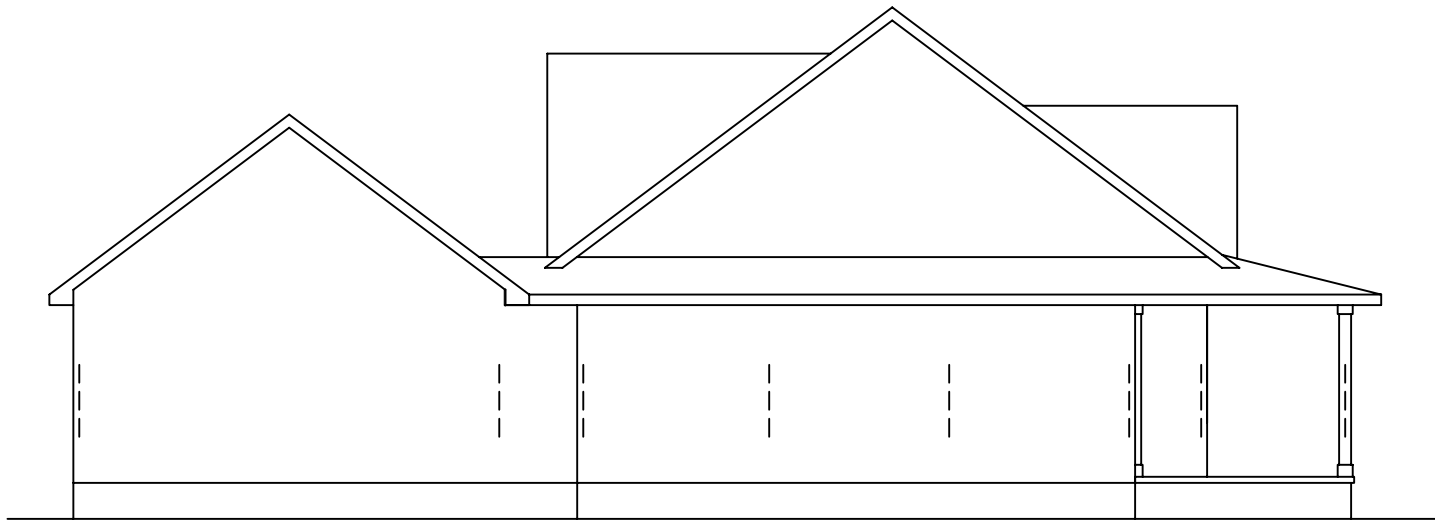
**Stones River**



EXCALIBUR  
 STEEL STRUCTURES  
 ExcaliburSteel.com  
 423-624-1047

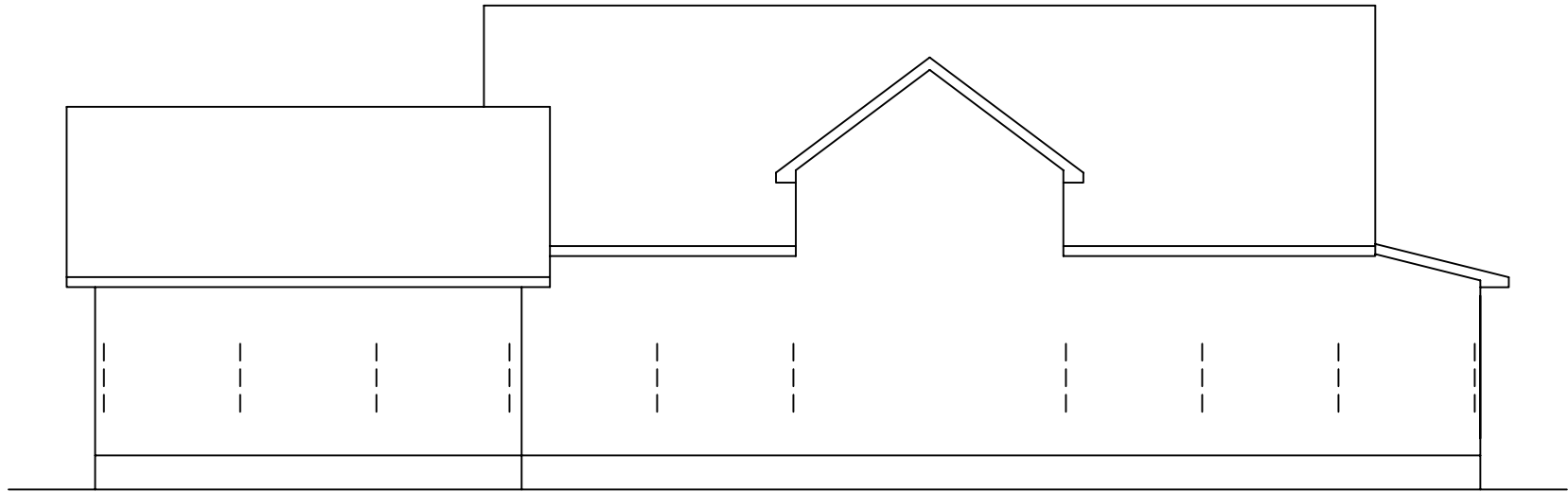


**Front**

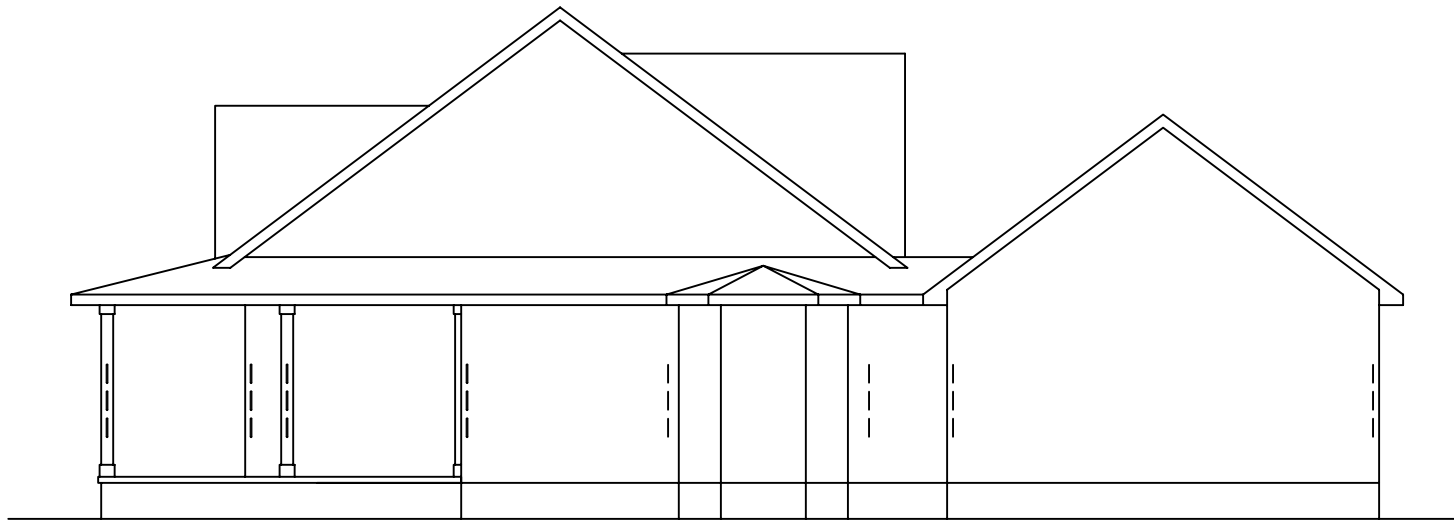


**Left**

<p>0 1 2 3 4 5 6 7 8 9 10</p>  <p>Scale: 3/32" = 1'</p>	<p><b><u>Stones River</u></b></p>	 <p>EXCALIBUR STEEL STRUCTURES ExcaliburSteel.com 423-624-1047</p>
--	-----------------------------------	---



**Rear**



**Right**

<p>0 1 2 3 4 5 6 7 8 9 10</p>  <p>Scale: 3/32" = 1'</p>	<p><b><u>Stones River</u></b></p>	 <p>EXCALIBUR STEEL STRUCTURES ExcaliburSteel.com 423-624-1047</p>
--	-----------------------------------	---