



[← BACK](#) [CONTENTS](#) [NEXT →](#)

Shiloh I



Copyright© 1998 Excalibur Steel Structures of Tennessee, LLC.

Specifications*

Living Area, 1st Floor:	2,000 s.f.	Dimensions (Overall):	85'-2" x 52'-0"
Living Area, 2nd Floor:	n/a	Roof Pitch:	6/12, 3/12
Utility:	154 s.f.	Ceiling Height, 1st Flr.:	8' +
Garage:	746 s.f.	Ceiling Height, 2nd Flr.:	n/a
Porch, Front:	317 s.f.	Bedrooms:	3
Porch, Rear:	375 s.f.	Baths:	2
Total Area:	3,592 s.f.	Fireplace:	n/a
Basement (optional):	1,985 s.f.	Standard Model Price:	Price List



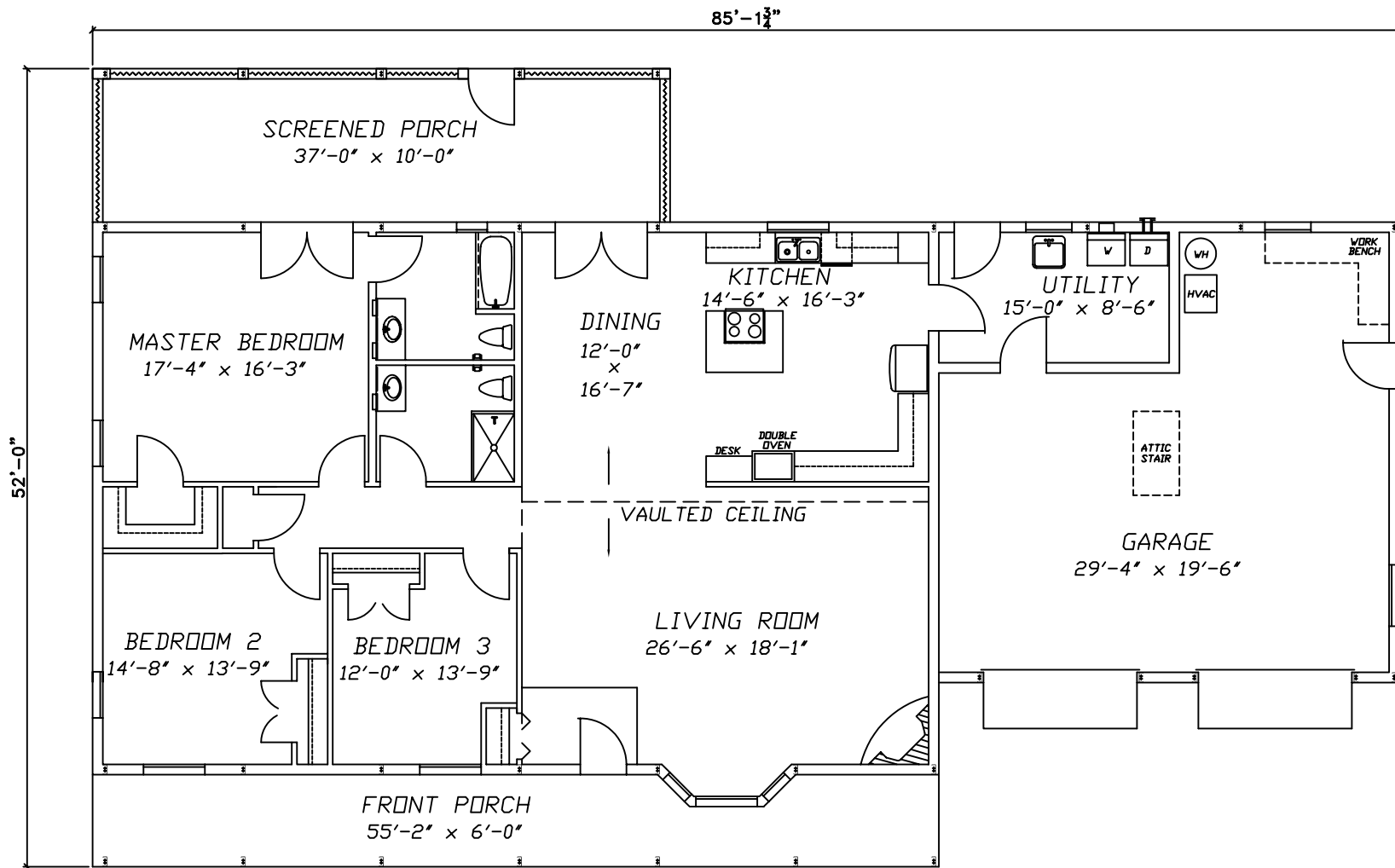
[Help/info](#)

Front/ Left Elevation	Rear/ Right Elevation
1st Floor Plan	2nd Floor Plan

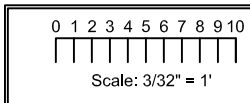
*Values are approximate



[RETURN TO HOME PAGE](#)



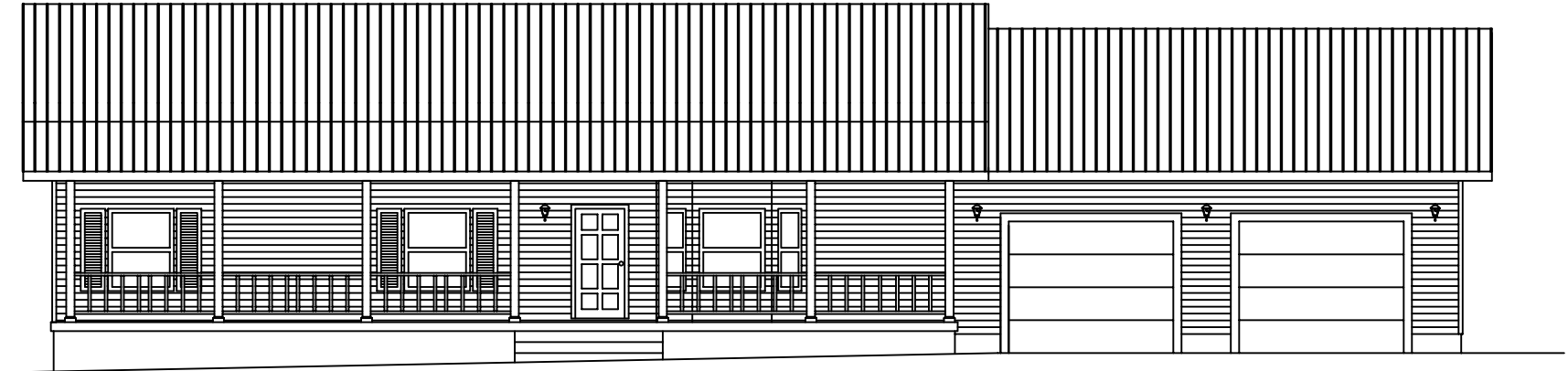
1st Floor



Shiloh I



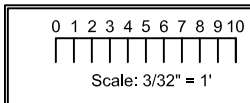
EXCALIBUR
STEEL STRUCTURES
ExcaliburSteel.com
423-624-1047



Front



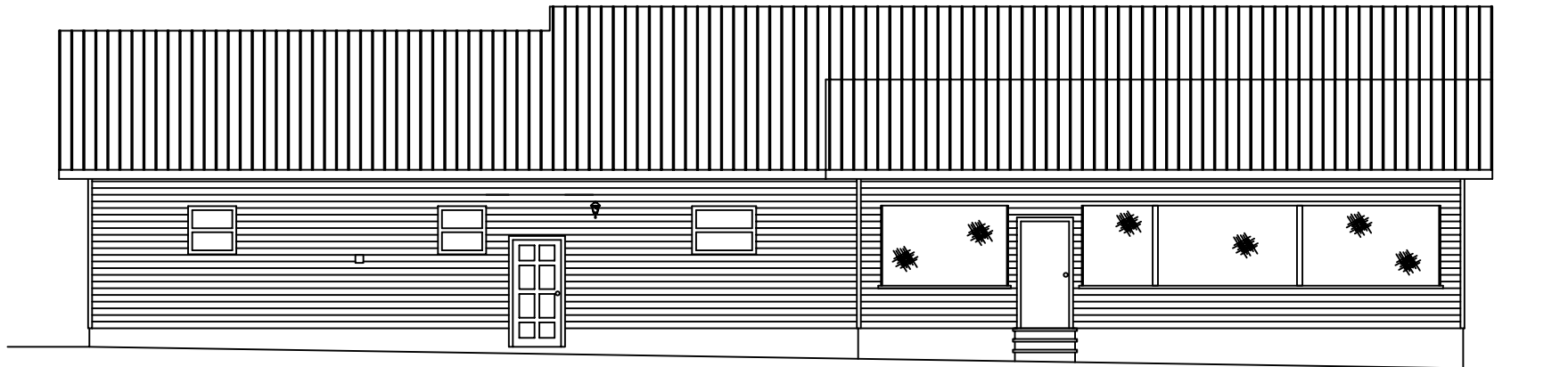
Left



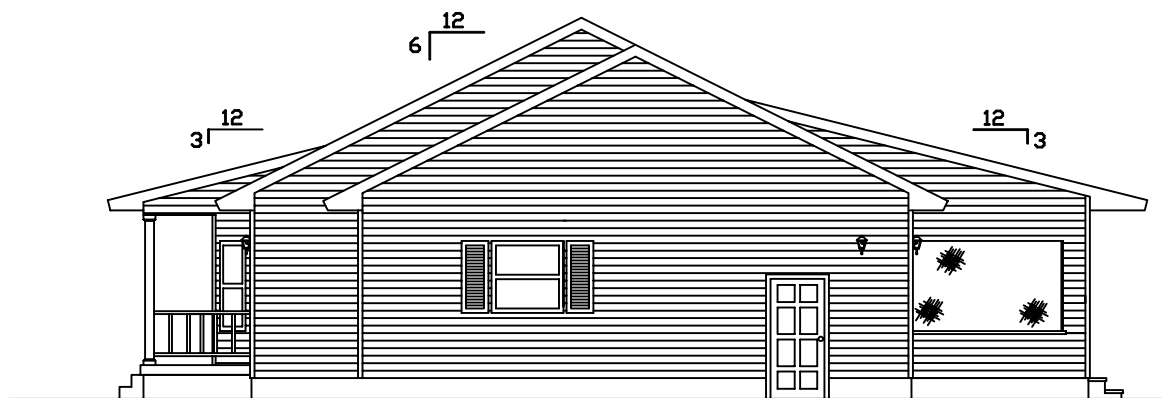
Shiloh I



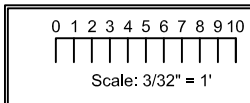
EXCALIBUR
STEEL STRUCTURES
ExcaliburSteel.com
423-624-1047



Rear



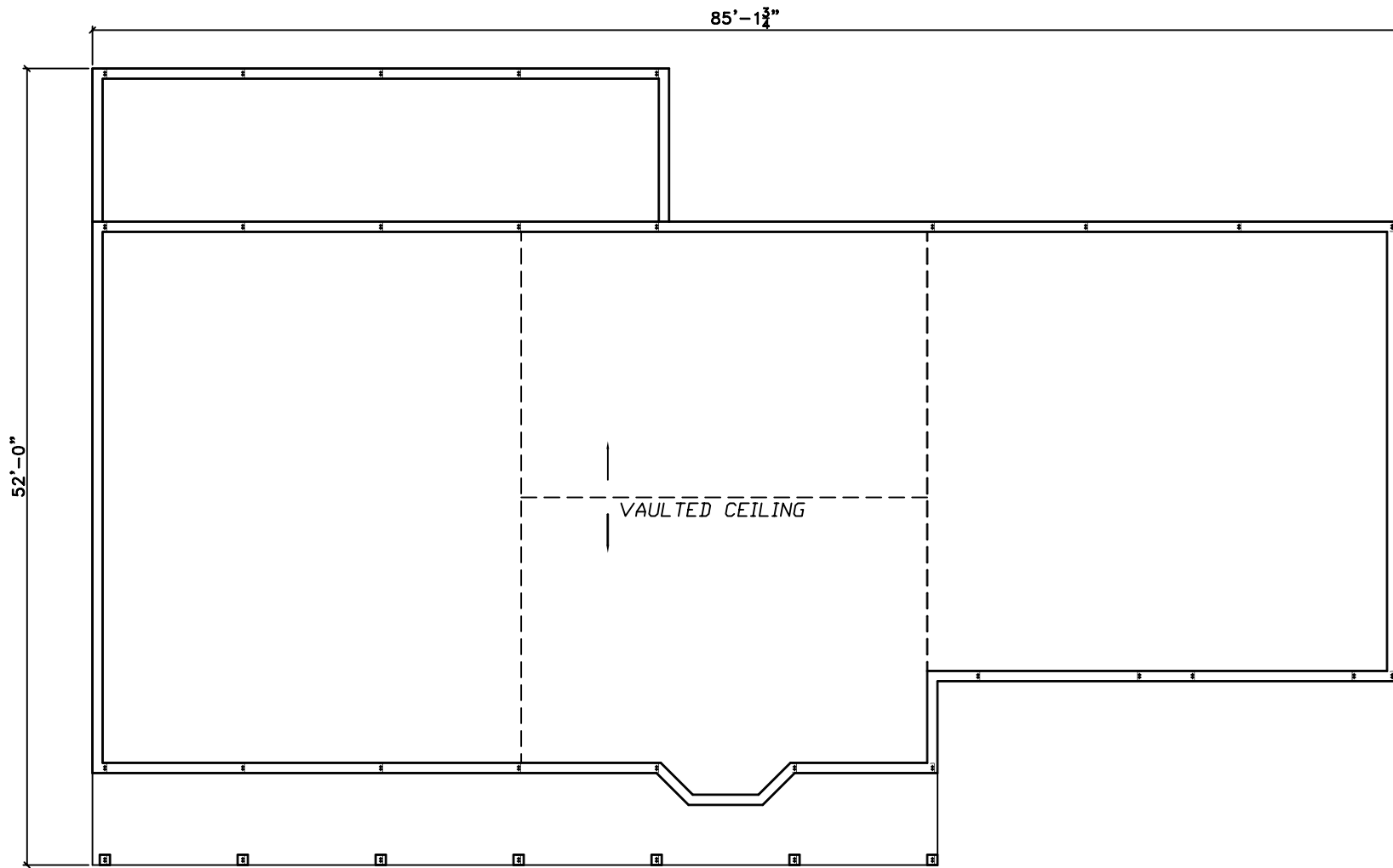
Right



Shiloh I

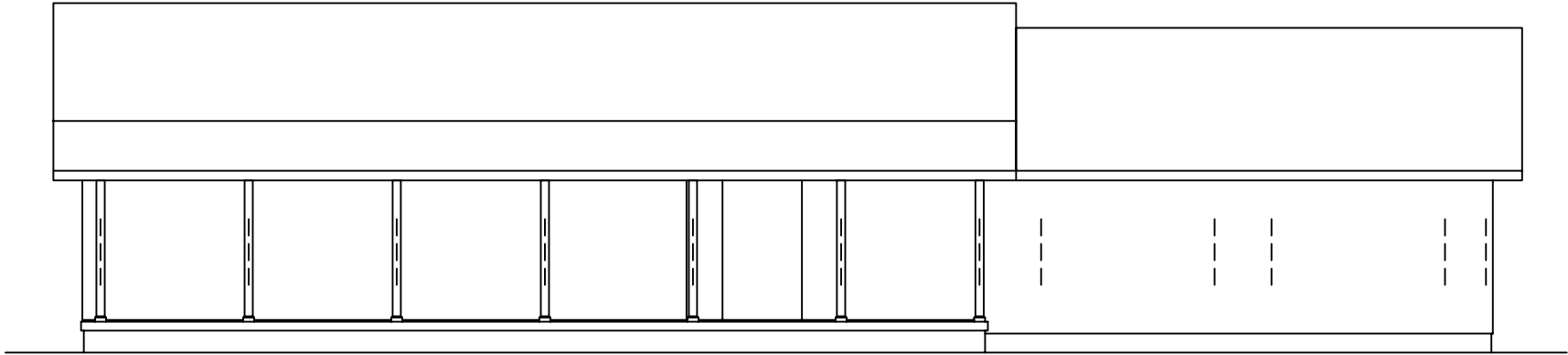


EXCALIBUR
STEEL STRUCTURES
ExcaliburSteel.com
423-624-1047

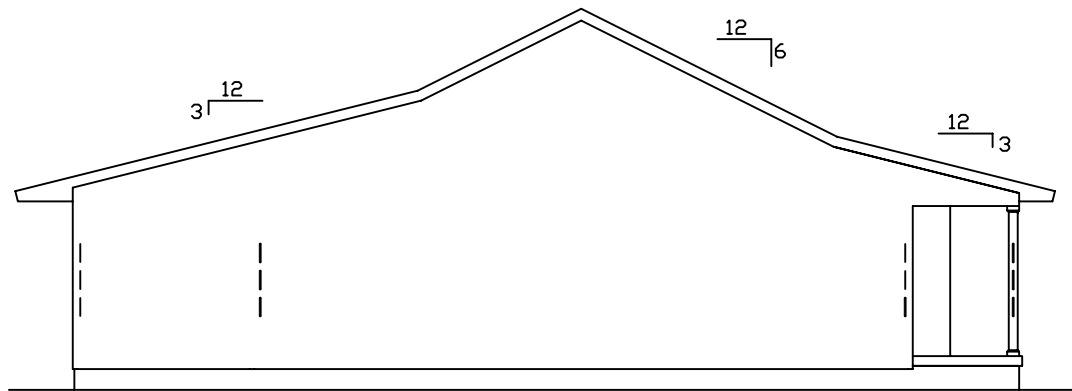


1st Floor

<p>0 1 2 3 4 5 6 7 8 9 10</p> <p>Scale: 3/32" = 1'</p>	<p>Shiloh I</p>	<p>EXCALIBUR STEEL STRUCTURES ExcaliburSteel.com 423-624-1047</p>
--	------------------------	---

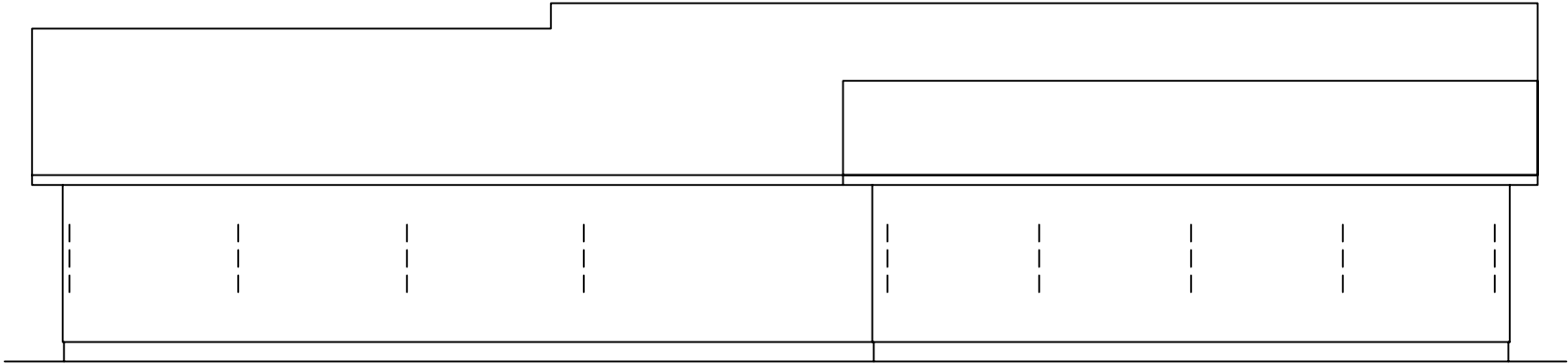


Front

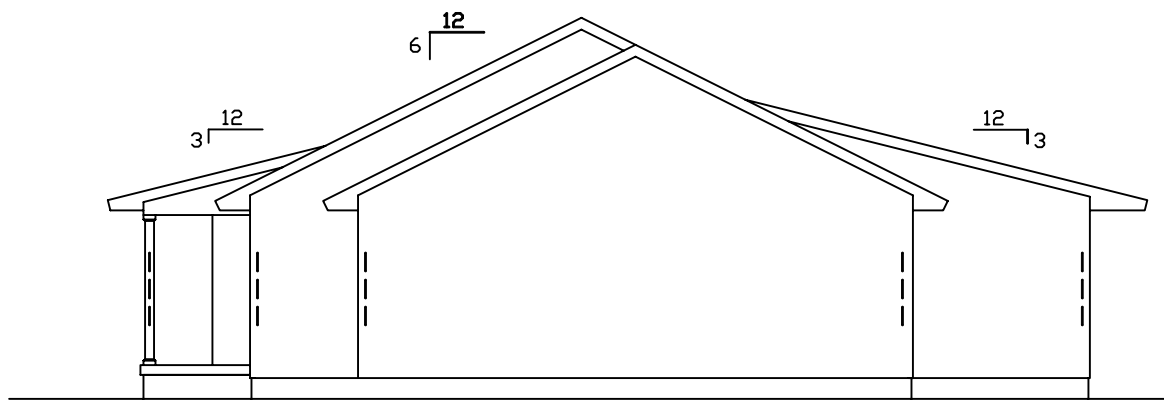


Left

<p>0 1 2 3 4 5 6 7 8 9 10</p> <p>Scale: 3/32" = 1'</p>	<p><u>Shiloh I</u></p>	<p>EXCALIBUR STEEL STRUCTURES ExcaliburSteel.com 423-624-1047</p>
--	-------------------------------	---



Rear



Right

<p>0 1 2 3 4 5 6 7 8 9 10</p> <p>Scale: 3/32" = 1'</p>	<p><u>Shiloh I</u></p>	<p>EXCALIBUR STEEL STRUCTURES ExcaliburSteel.com 423-624-1047</p>
--	-------------------------------	---