



[← BACK](#)   [CONTENTS](#)   [NEXT →](#)

## Sharpsburg



Copyright© 1998 Excalibur Steel Structures of Tennessee, LLC.

### Specifications\*

Living Area, 1st Floor:	1,370 s.f.	Dimensions (Overall):	40'-0" x 35'-0"
Living Area, 2nd Floor:	1,274 s.f.	Roof Pitch:	10/12
Utility:	48 s.f.	Ceiling Height, 1st Flr.:	9'
Garage:	n/a	Ceiling Height, 2nd Flr.:	9'
Porch, Front:	n/a	Bedrooms:	4
Porch, Rear:	n/a	Baths:	2 full, 1 half
<b>Total Area:</b>	<b>2,692 s.f.</b>	Fireplace:	1
Basement (optional):	1,400 s.f.	Standard Model Price:	<a href="#">Price List</a>



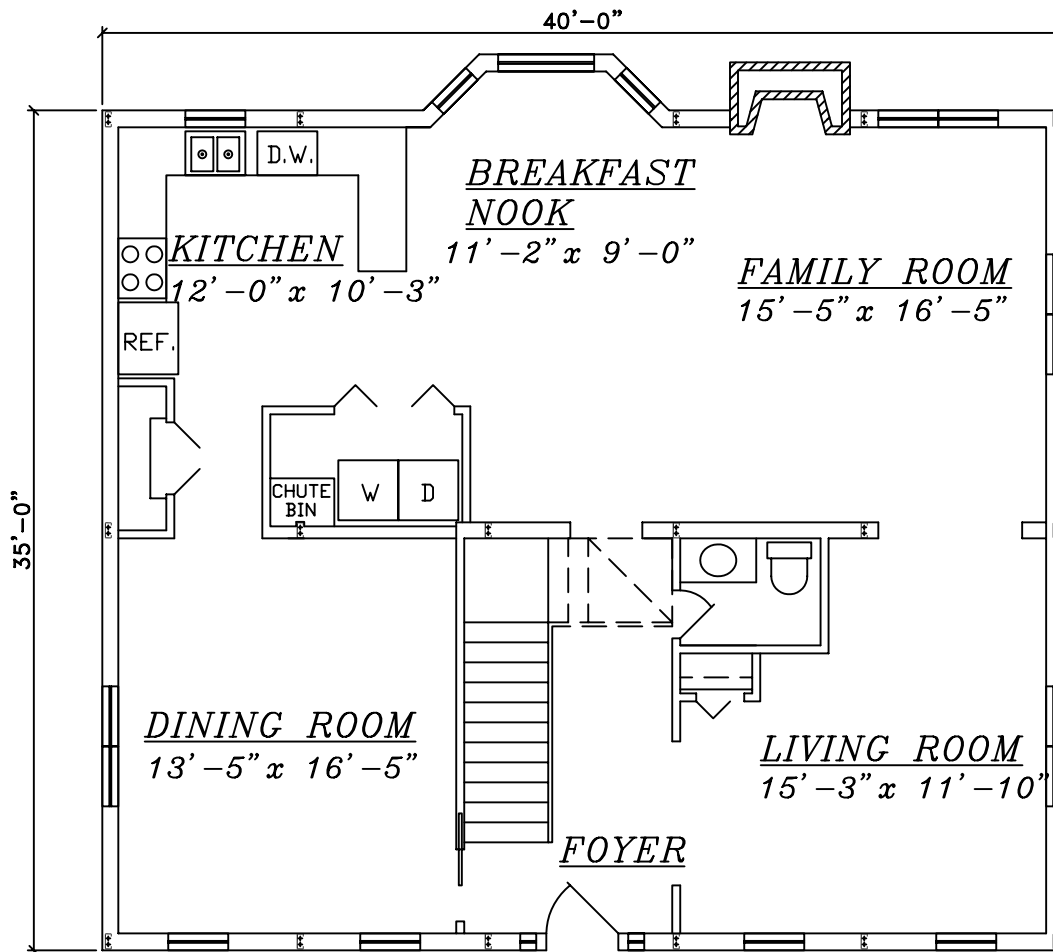
[Help/info](#)

<a href="#">Front/ Left Elevation</a>	<a href="#">Rear/ Right Elevation</a>
<a href="#">1st Floor Plan</a>	<a href="#">2nd Floor Plan</a>

\*Values are approximate

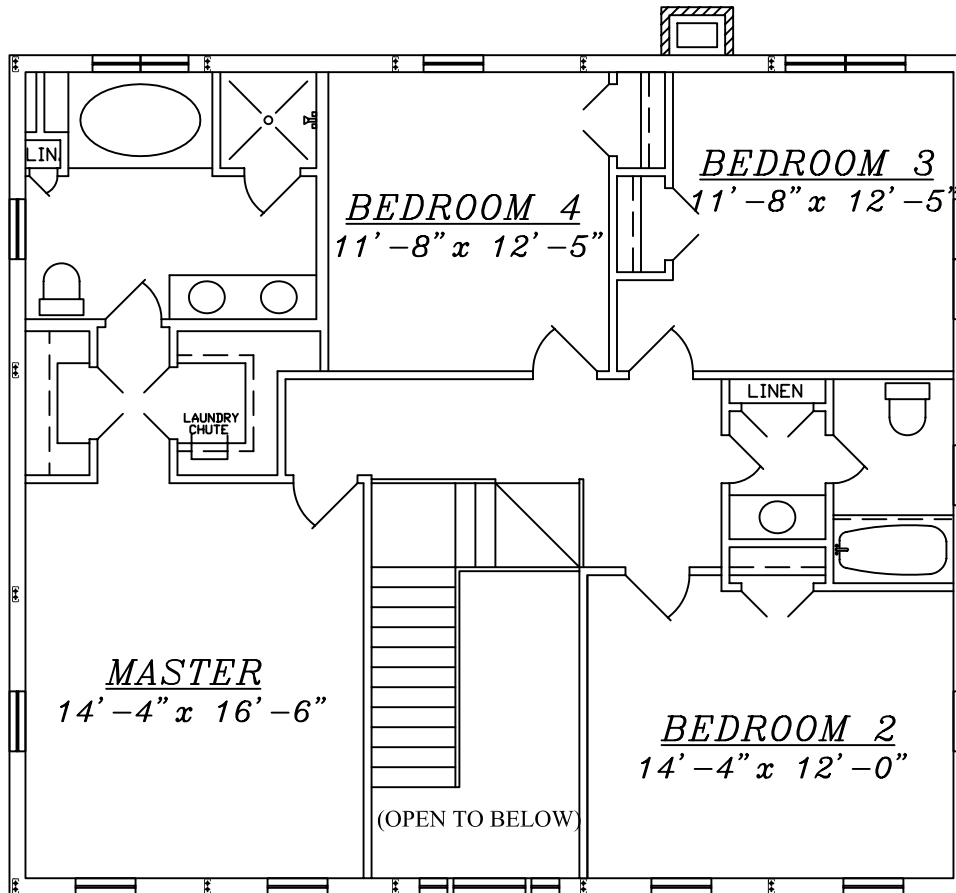


[RETURN TO HOME PAGE](#)



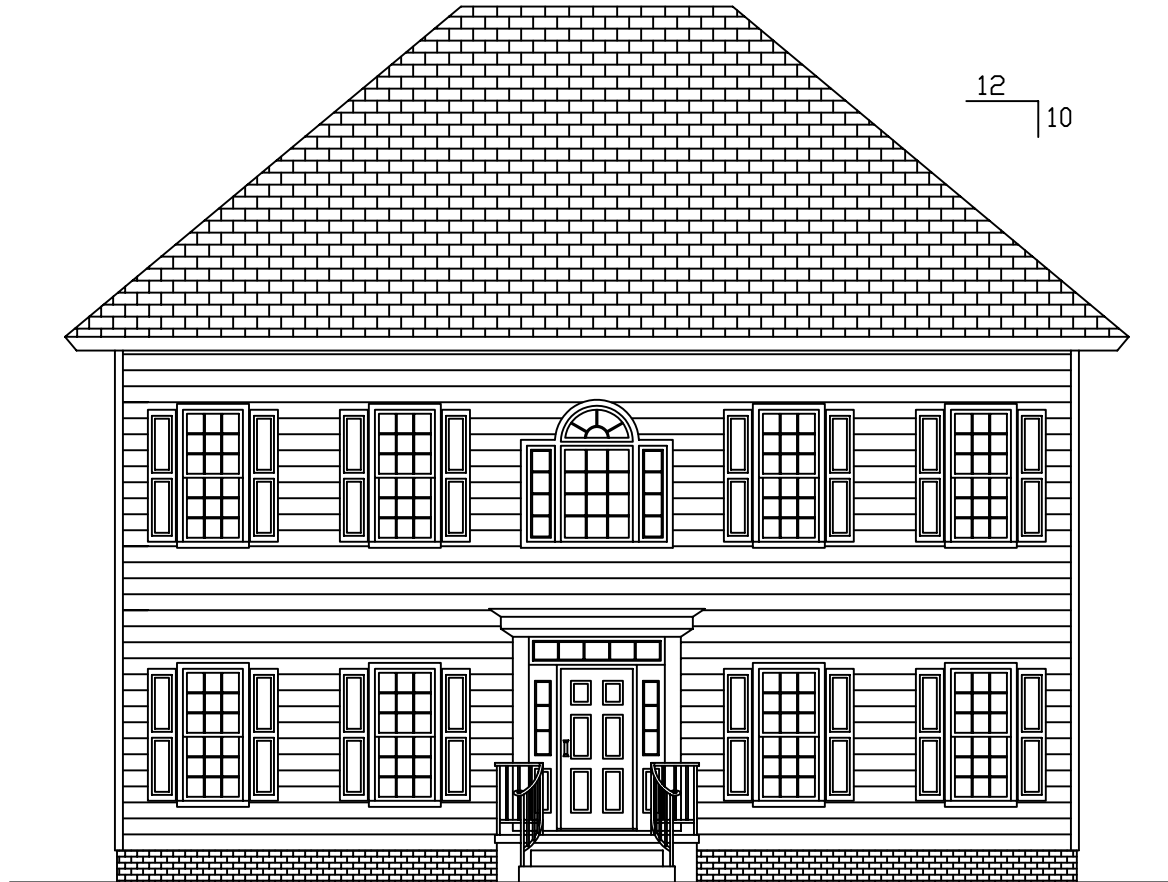
**1st Floor**

<p>0 1 2 3 4 5 6 7 8</p> <p>Scale: 1/8" = 1'</p>	<p><b>Sharpsburg</b></p>	<p>EXCALIBUR STEEL STRUCTURES ExciliburSteel.com 423-624-1047</p>
--	--------------------------	---



**2nd Floor**

<p>0 1 2 3 4 5 6 7 8 Scale: 1/8" = 1'</p>	<p><b>Sharpsburg</b></p>	<p>EXCALIBUR STEEL STRUCTURES ExcaliburSteel.com 423-624-1047</p>
---	--------------------------	---



**Front**

<p>0 1 2 3 4 5 6 7 8 Scale: 1/8" = 1'</p>	<p><b>Sharpsburg</b></p>	<p>EXCALIBUR STEEL STRUCTURES ExcaliburSteel.com 423-624-1047</p>
---	--------------------------	---



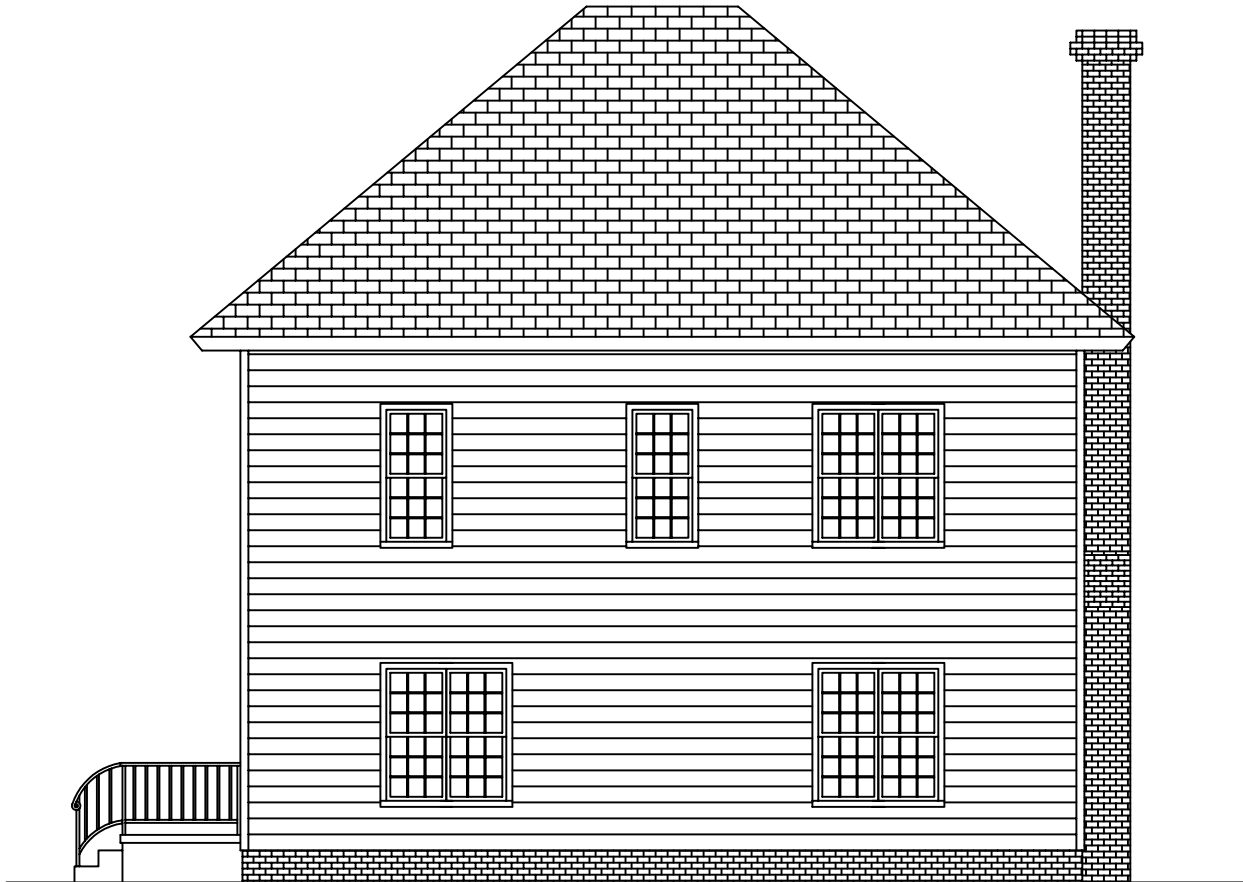
**Left**

0 1 2 3 4 5 6 7 8 	<b>Sharpsburg</b>		EXCALIBUR STEEL STRUCTURES ExcaliburSteel.com 423-624-1047
-----------------------	-------------------	--	---



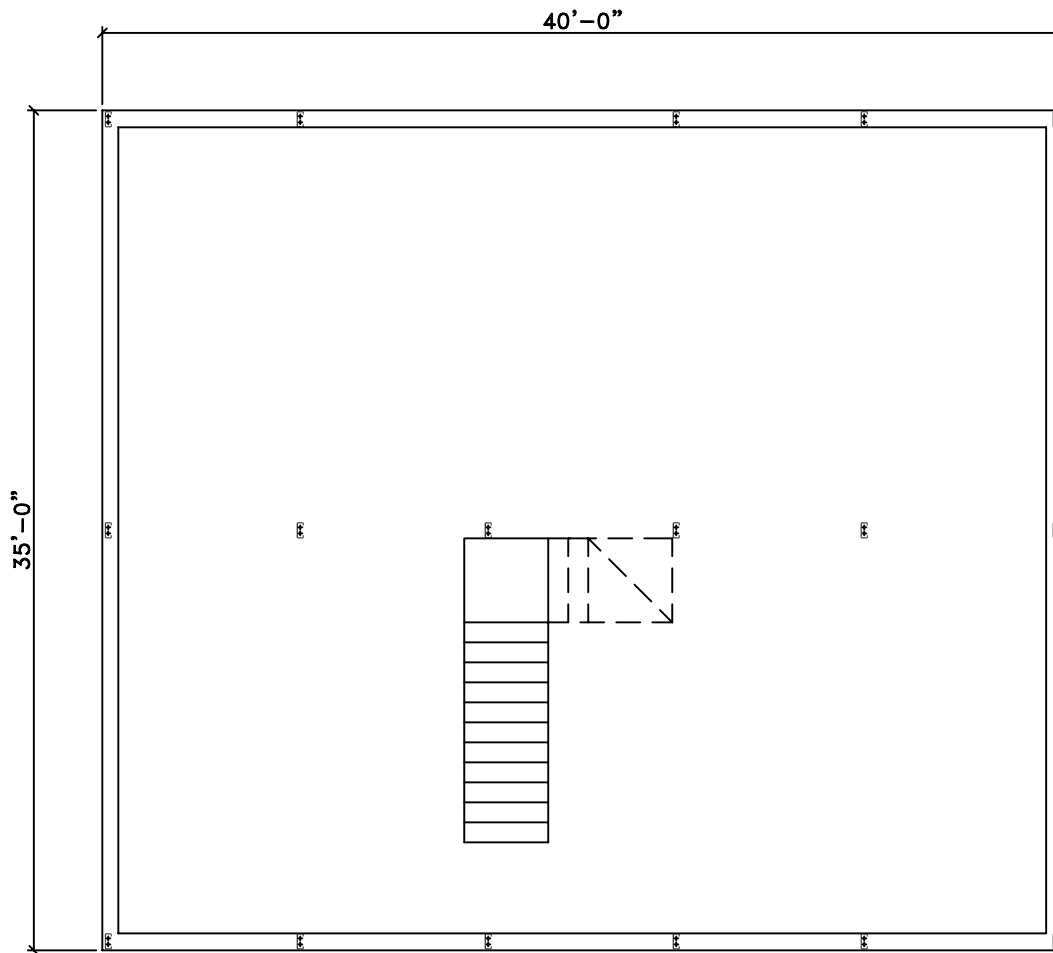
Rear

0 1 2 3 4 5 6 7 8 	<b>Sharpsburg</b>		EXCALIBUR STEEL STRUCTURES ExcaliburSteel.com 423-624-1047
-----------------------	-------------------	--	---



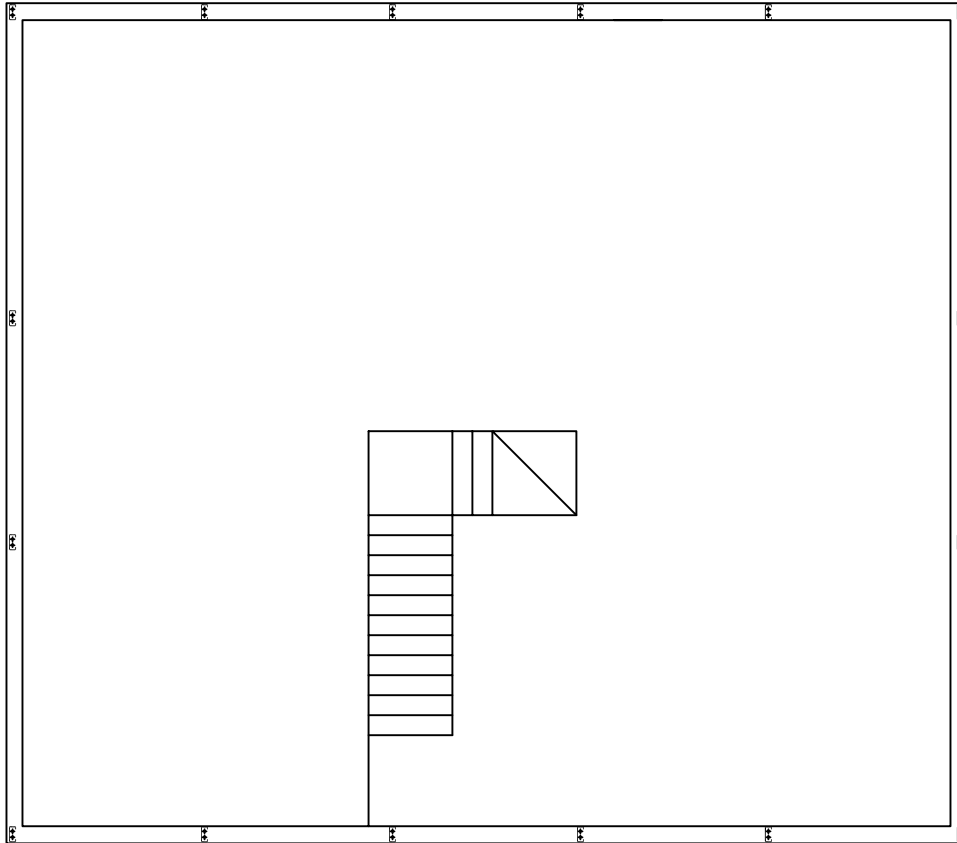
**Right**

0 1 2 3 4 5 6 7 8 	<b>Sharpsburg</b>		EXCALIBUR STEEL STRUCTURES ExcaliburSteel.com 423-624-1047
-----------------------	-------------------	--	---



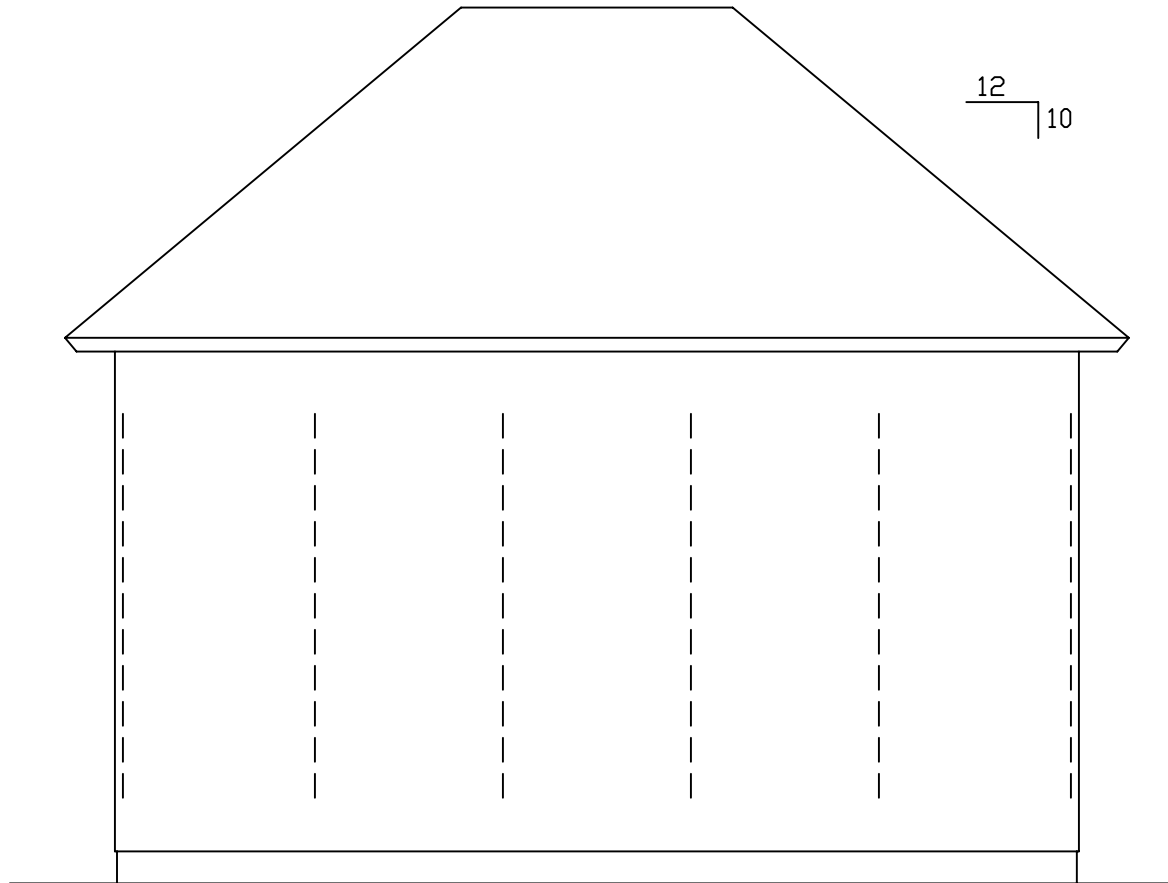
**1st Floor**

 <p>0 1 2 3 4 5 6 7 8</p> <p>Scale: 1/8" = 1'</p>	<p><b>Sharpsburg</b></p>	 <p>EXCALIBUR STEEL STRUCTURES ExcaliburSteel.com 423-624-1047</p>
--	--------------------------	---



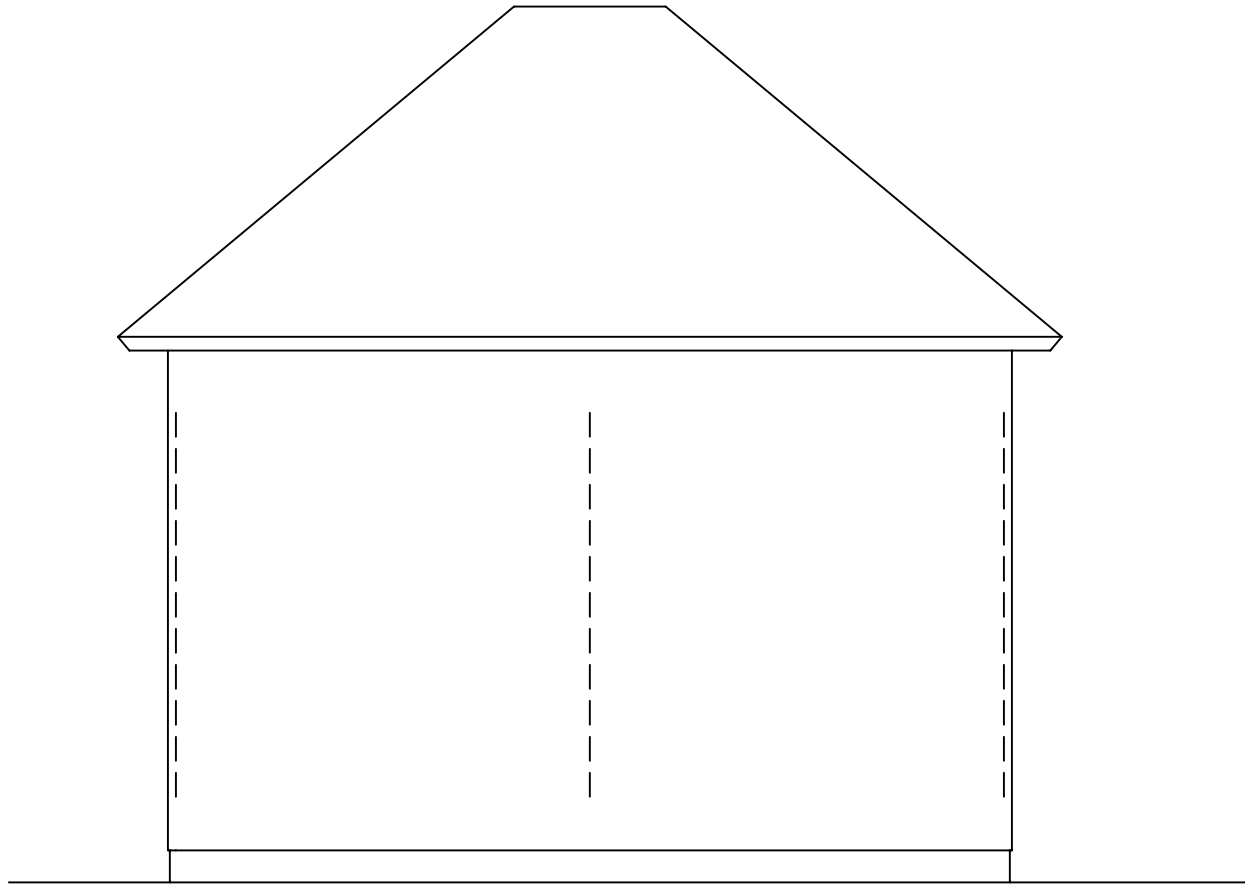
**2nd Floor**

<p>0 1 2 3 4 5 6 7 8 Scale: 1/8" = 1'</p>	<p><b><u>Sharpsburg</u></b></p>	 <p>EXCALIBUR STEEL STRUCTURES ExcaliburSteel.com 423-624-1047</p>
---	---------------------------------	---



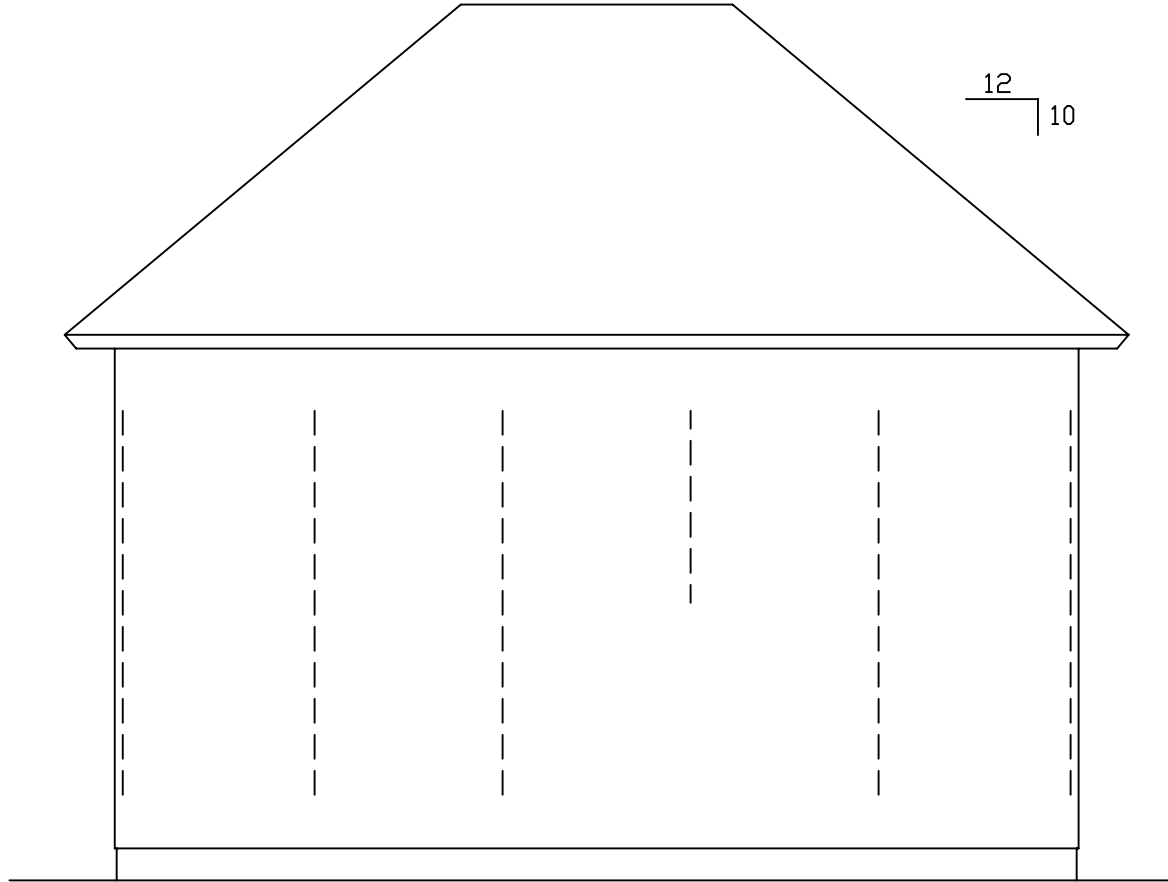
**Front**

0 1 2 3 4 5 6 7 8 	<b>Sharpsburg</b>		EXCALIBUR STEEL STRUCTURES ExcaliburSteel.com 423-624-1047
-----------------------	-------------------	--	---



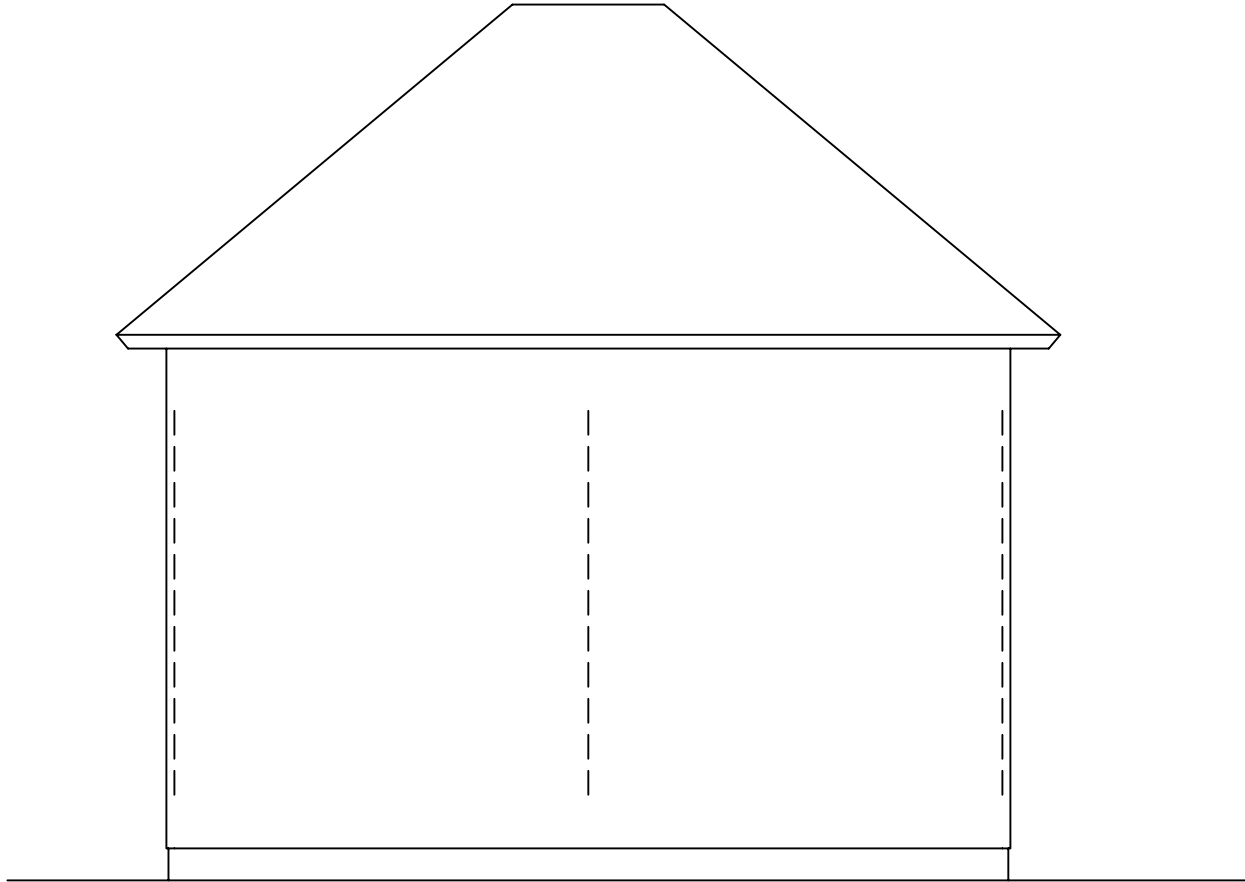
**Left**

	<p><b>Sharpsburg</b></p>	 <p>EXCALIBUR STEEL STRUCTURES ExcaliburSteel.com 423-624-1047</p>
--	--------------------------	---



**Rear**

0 1 2 3 4 5 6 7 8 	<b>Sharpsburg</b>		EXCALIBUR STEEL STRUCTURES ExcaliburSteel.com 423-624-1047
-----------------------	-------------------	--	---



**Right**

<p>0 1 2 3 4 5 6 7 8 Scale: 1/8" = 1'</p>	<p><b><u>Sharpsburg</u></b></p>	<p>EXCALIBUR STEEL STRUCTURES ExcaliburSteel.com 423-624-1047</p>
---	---------------------------------	---