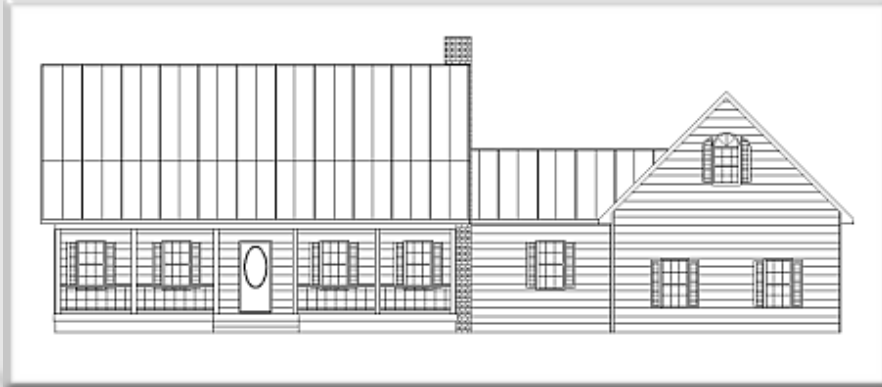




[← BACK](#) [CONTENTS](#) [NEXT →](#)

Seven Pines



Copyright© 2000 Excalibur Steel Structures of Tennessee, LLC.

Specifications*

Living Area, 1st Floor:	1,166 s.f.	Dimensions (Overall):	79'-8" x 45'-4"
Living Area, 2nd Floor:	1,139 s.f.	Roof Pitch:	12/12, 5/12, 3/12
Utility:	293 s.f.	Ceiling Height, 1st Flr.:	9'
Garage:	649 s.f.	Ceiling Height, 2nd Flr.:	9'
Porch, Front:	339 s.f.	Bedrooms:	3
Porch, Rear:	257 s.f.	Baths:	4
Total Area:	3,843 s.f.	Fireplace:	n/a
Basement (optional):	1,166 s.f.	Standard Model Price:	Price List



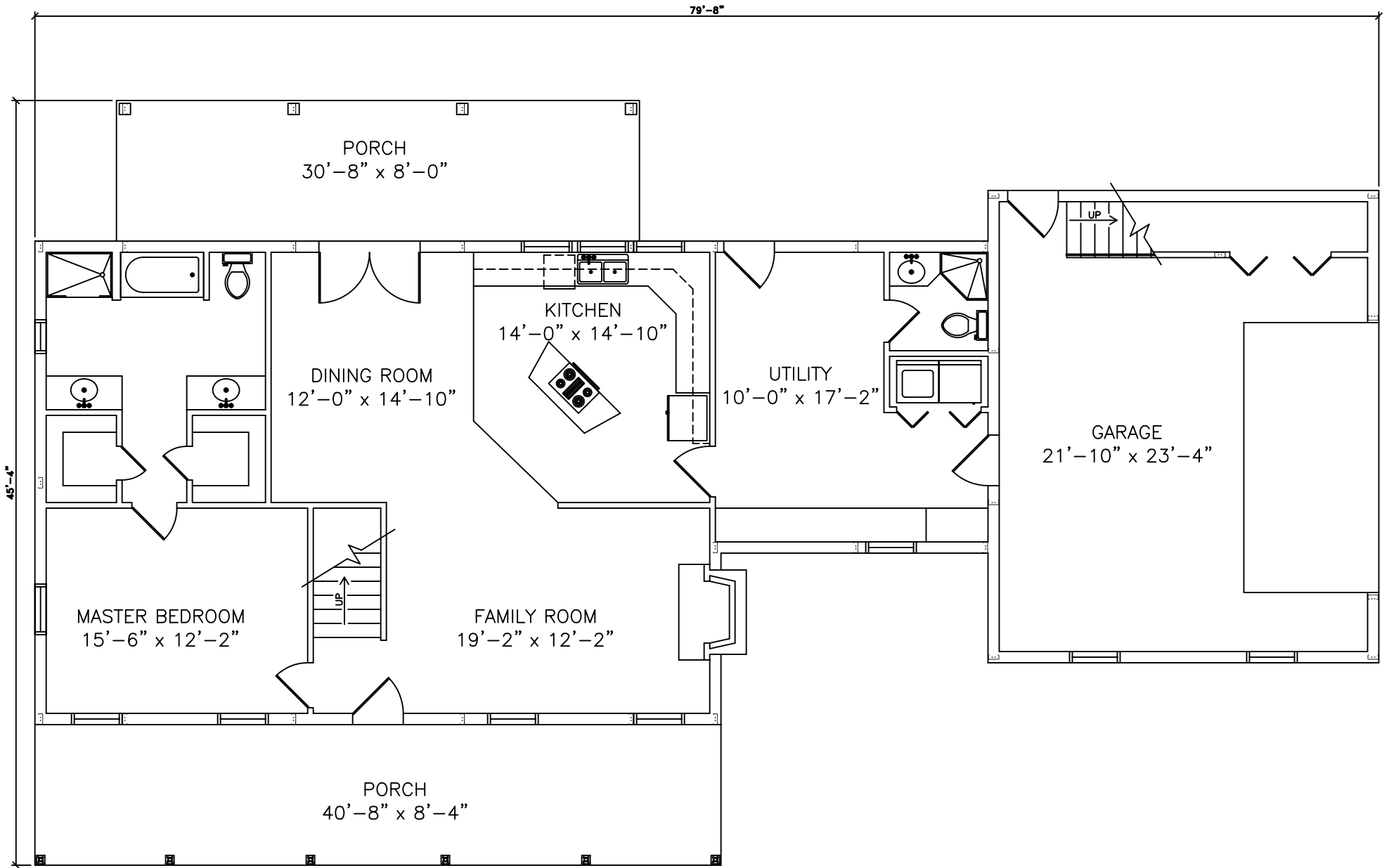
[Help/info](#)

Front/ Left Elevation	Rear/ Right Elevation
1st Floor Plan	2nd Floor Plan

*Values are approximate

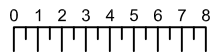


[RETURN TO HOME PAGE](#)



1st Floor

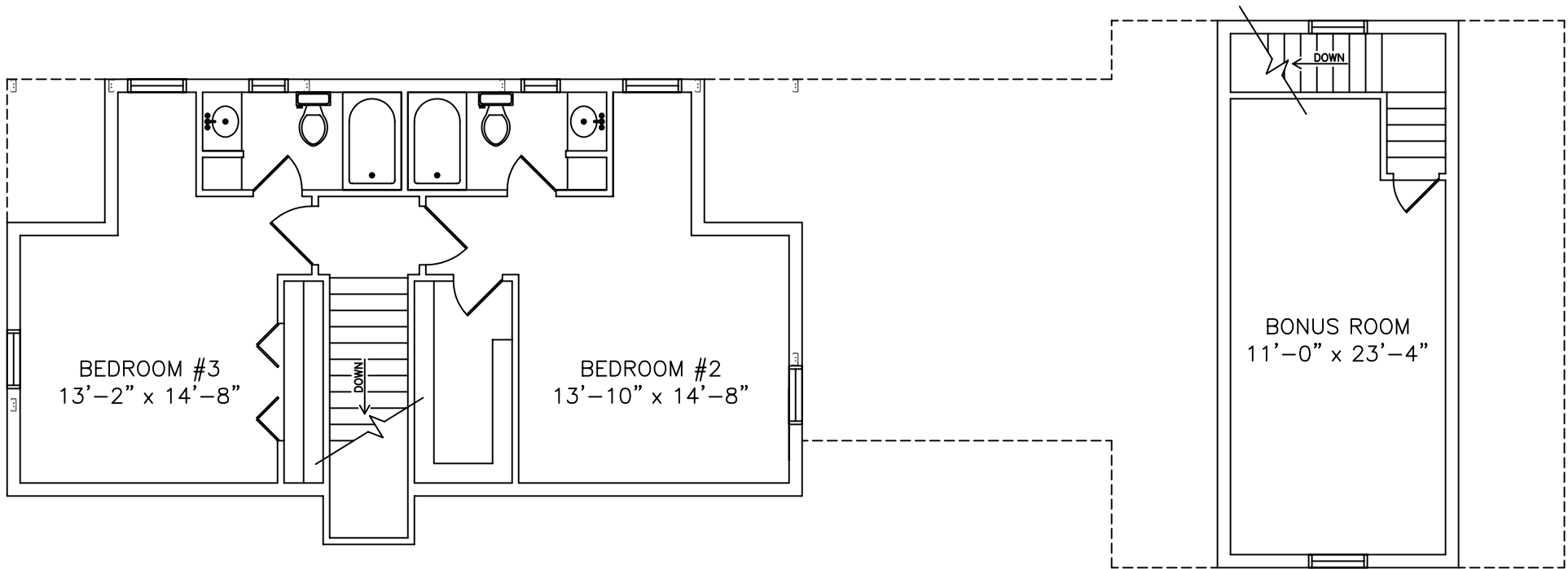
Seven Pines



Scale: 1/8" = 1'

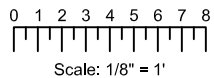


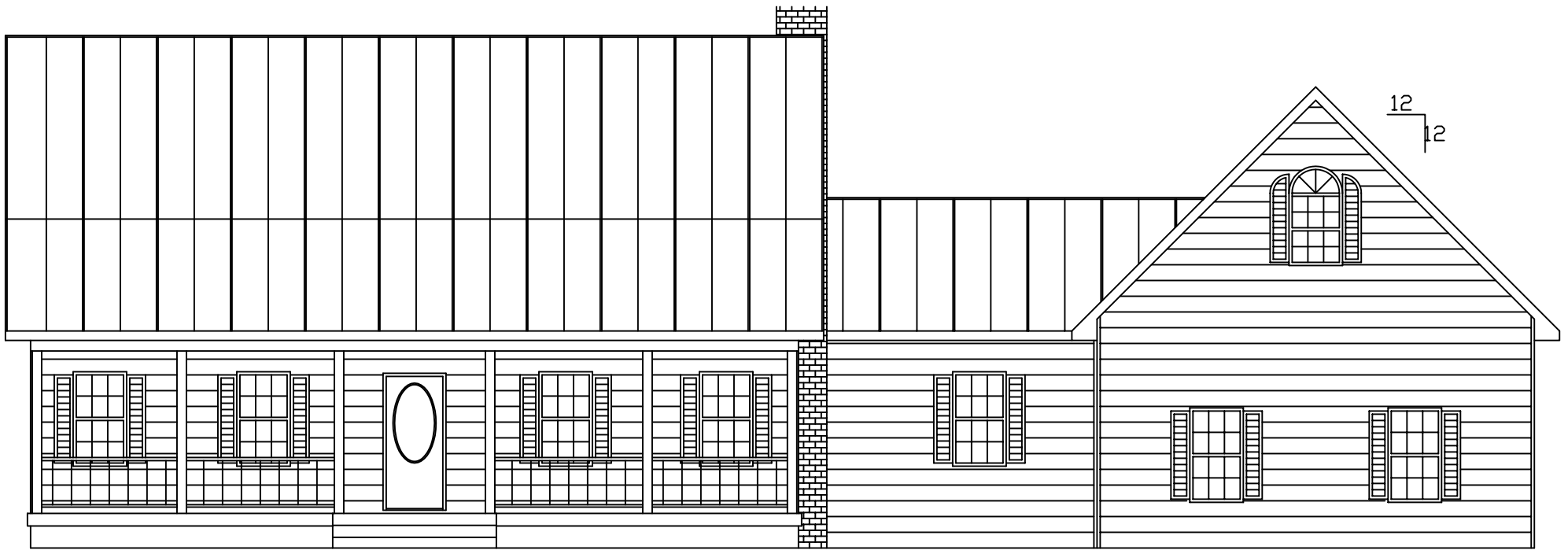
EXCALIBUR
STEEL STRUCTURES
ExcaliburSteel.com
423-624-1047



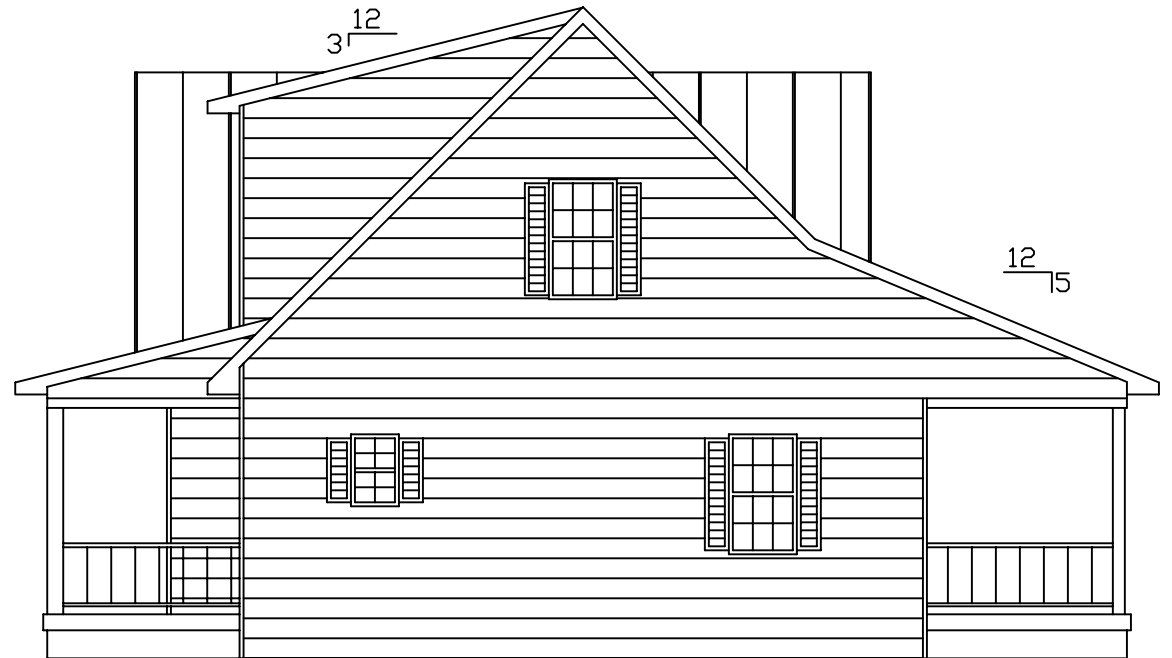
2nd Floor

Seven Pines



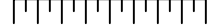


FRONT



LEFT

0 1 2 3 4 5 6 7 8



Scale: 1/8" = 1'



= COLUMN IN WALL

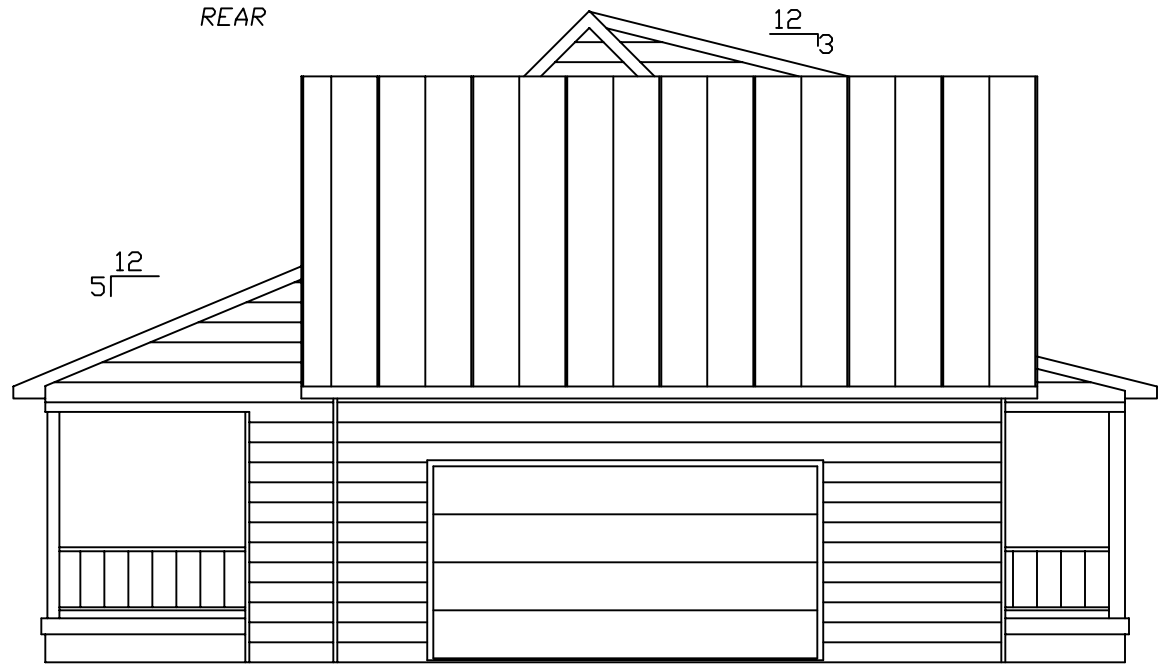
Seven Pines



EXCALIBUR
STEEL STRUCTURES
ExcaliburSteel.com
423-624-1047

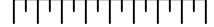


REAR



RIGHT

0 1 2 3 4 5 6 7 8



Scale: 1/8" = 1'

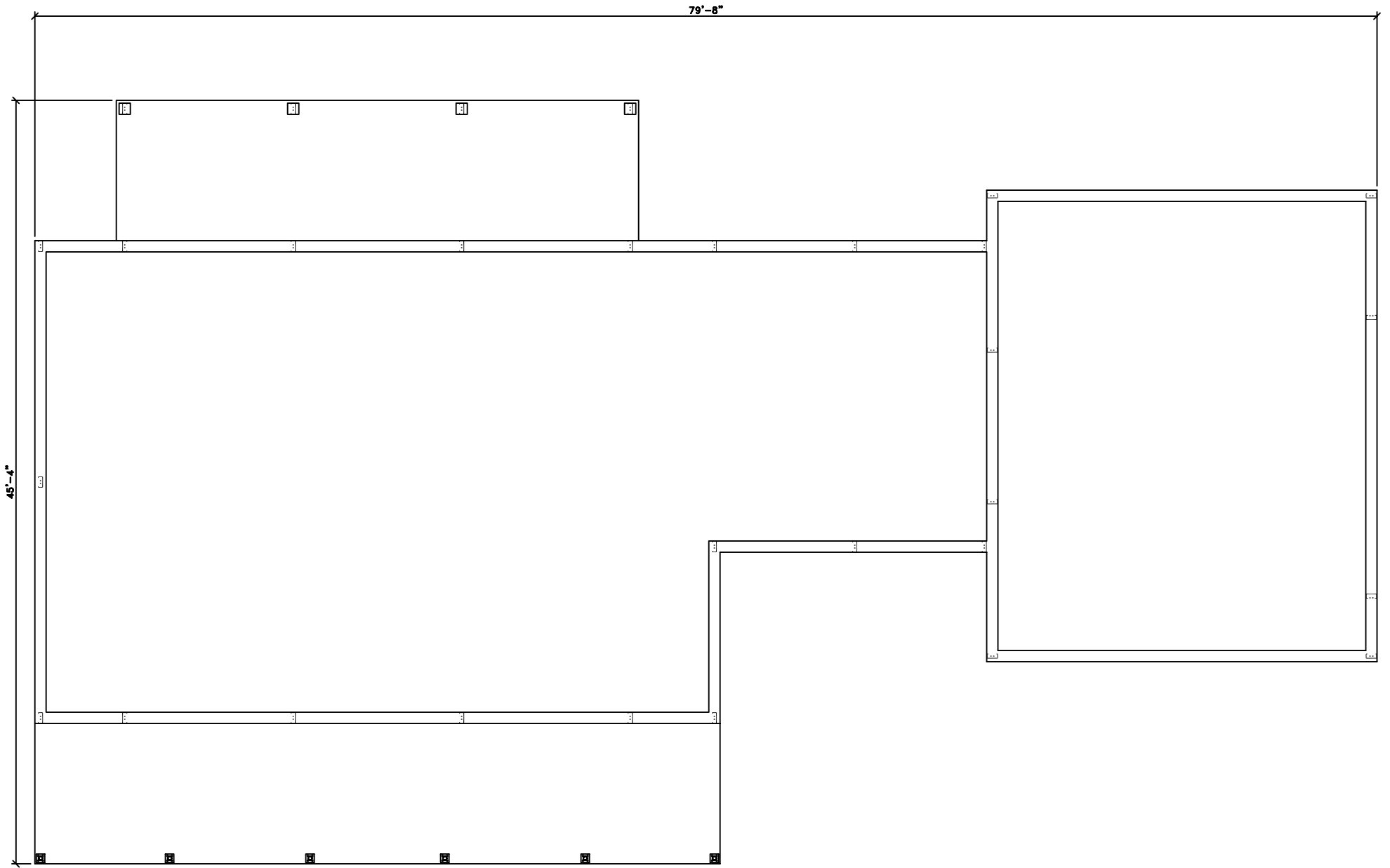


= COLUMN IN WALL

Seven Pines

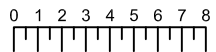


EXCALIBUR
STEEL STRUCTURES
ExcaliburSteel.com
423-624-1047



1st Floor

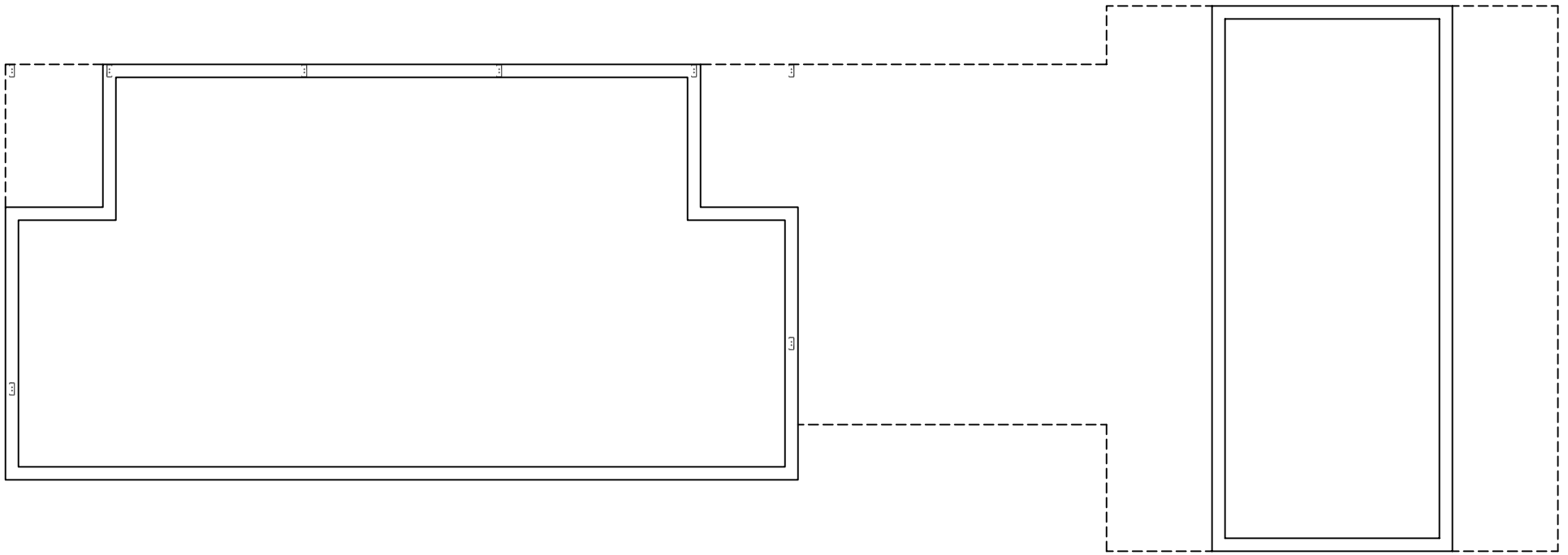
Seven Pines



Scale: 1/8" = 1'

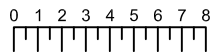


EXCALIBUR
STEEL STRUCTURES
ExcaliburSteel.com
423-624-1047



2nd Floor

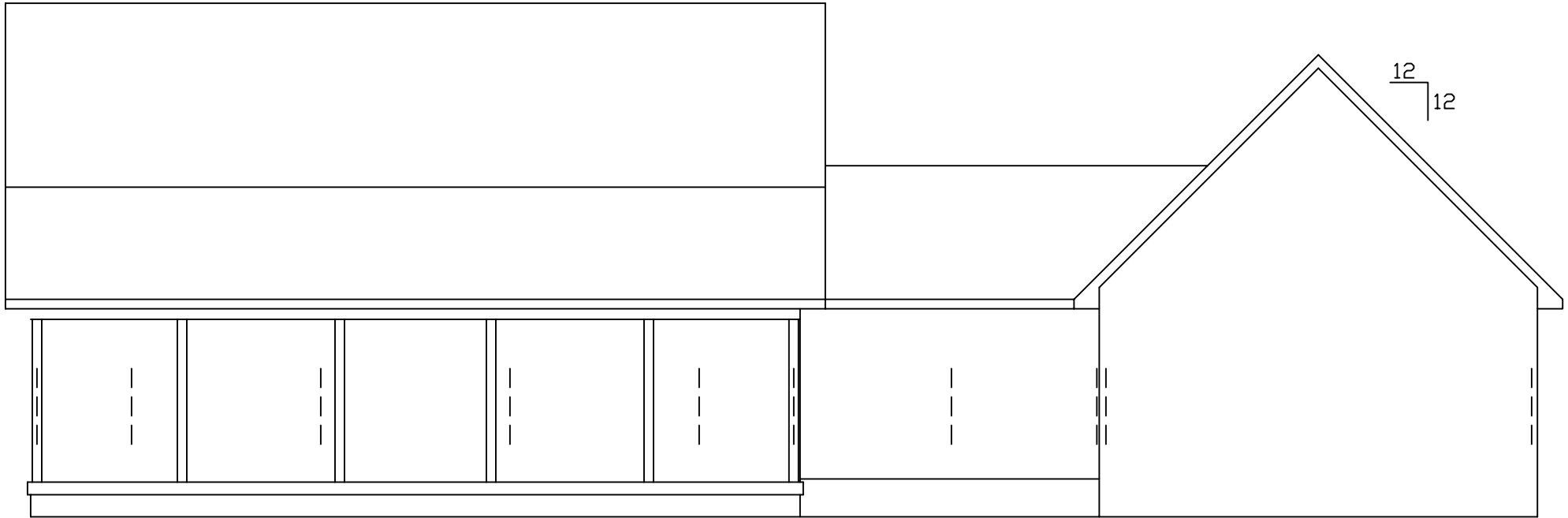
Seven Pines



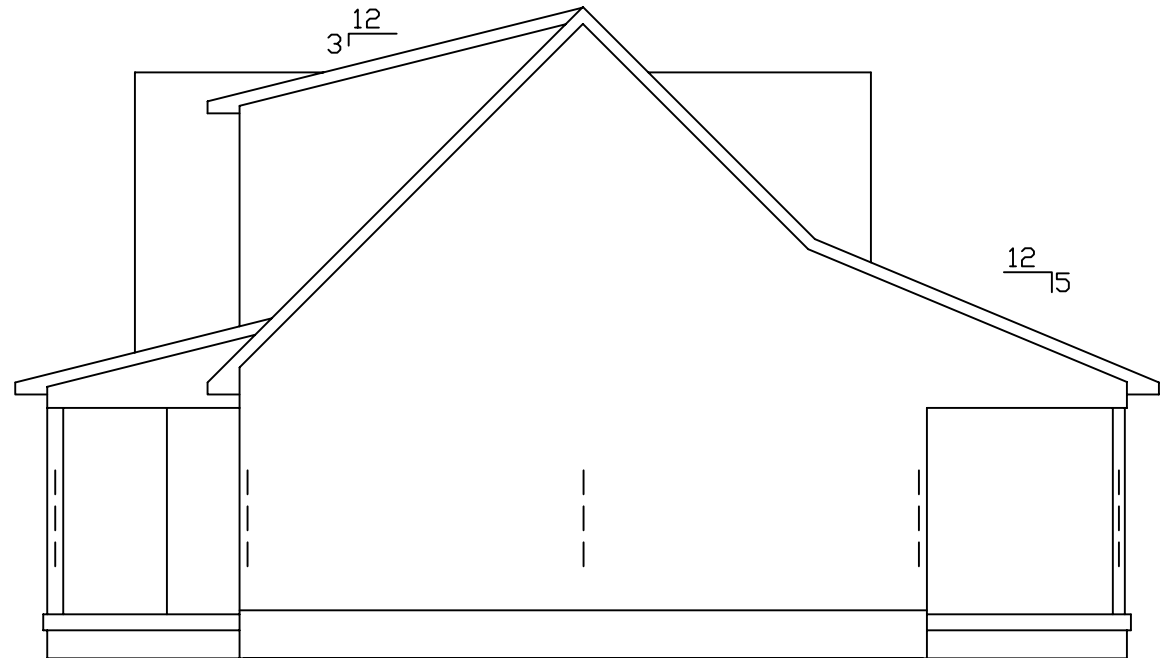
Scale: 1/8" = 1'



EXCALIBUR
STEEL STRUCTURES
ExcaliburSteel.com
423-624-1047

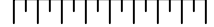


FRONT



LEFT

0 1 2 3 4 5 6 7 8



Scale: 1/8" = 1'

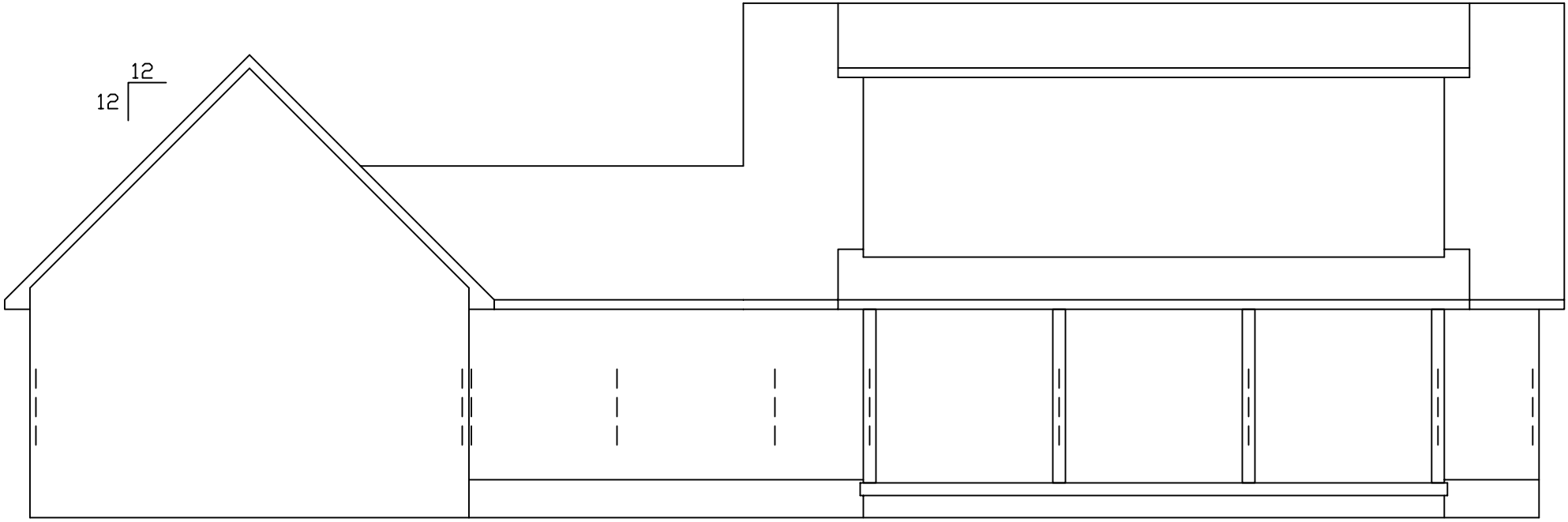


= COLUMN IN WALL

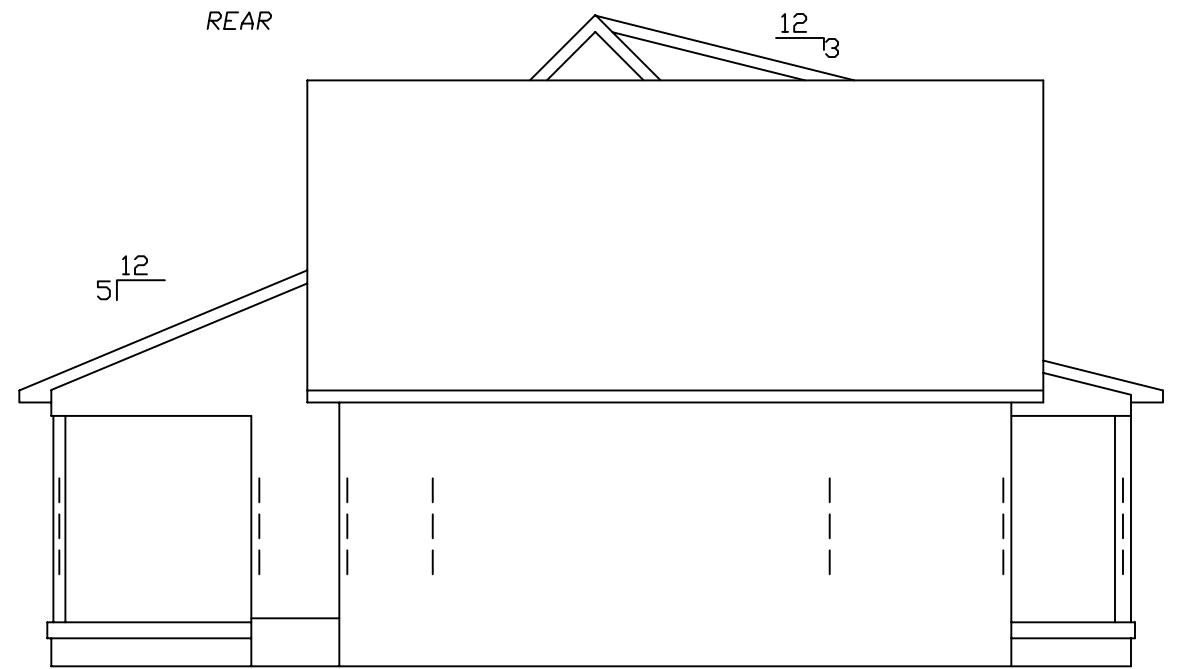
Seven Pines



EXCALIBUR
STEEL STRUCTURES
ExcaliburSteel.com
423-624-1047



REAR



RIGHT