



[← BACK](#)   [CONTENTS](#)   [NEXT →](#)

## Kernstown III



Copyright© 2001 Excalibur Steel Structures of Tennessee, LLC.

### Specifications\*

Living Area, 1st Floor:	976 s.f.	Dimensions (Overall):	65'-0" x 32'-0"
Living Area, 2nd Floor:	880 s.f.	Roof Pitch:	6/12
Utility:	n/a	Ceiling Height, 1st Flr.:	8'
Garage:	583 s.f.	Ceiling Height, 2nd Flr.:	8'
Porch, Front:	325 s.f.	Bedrooms:	3
Porch, Rear:	n/a	Baths:	2
<b>Total Area:</b>	<b>2,764 s.f.</b>	Fireplace:	n/a
Basement (optional):	976 s.f.	Standard Model Price:	<a href="#">Price List</a>



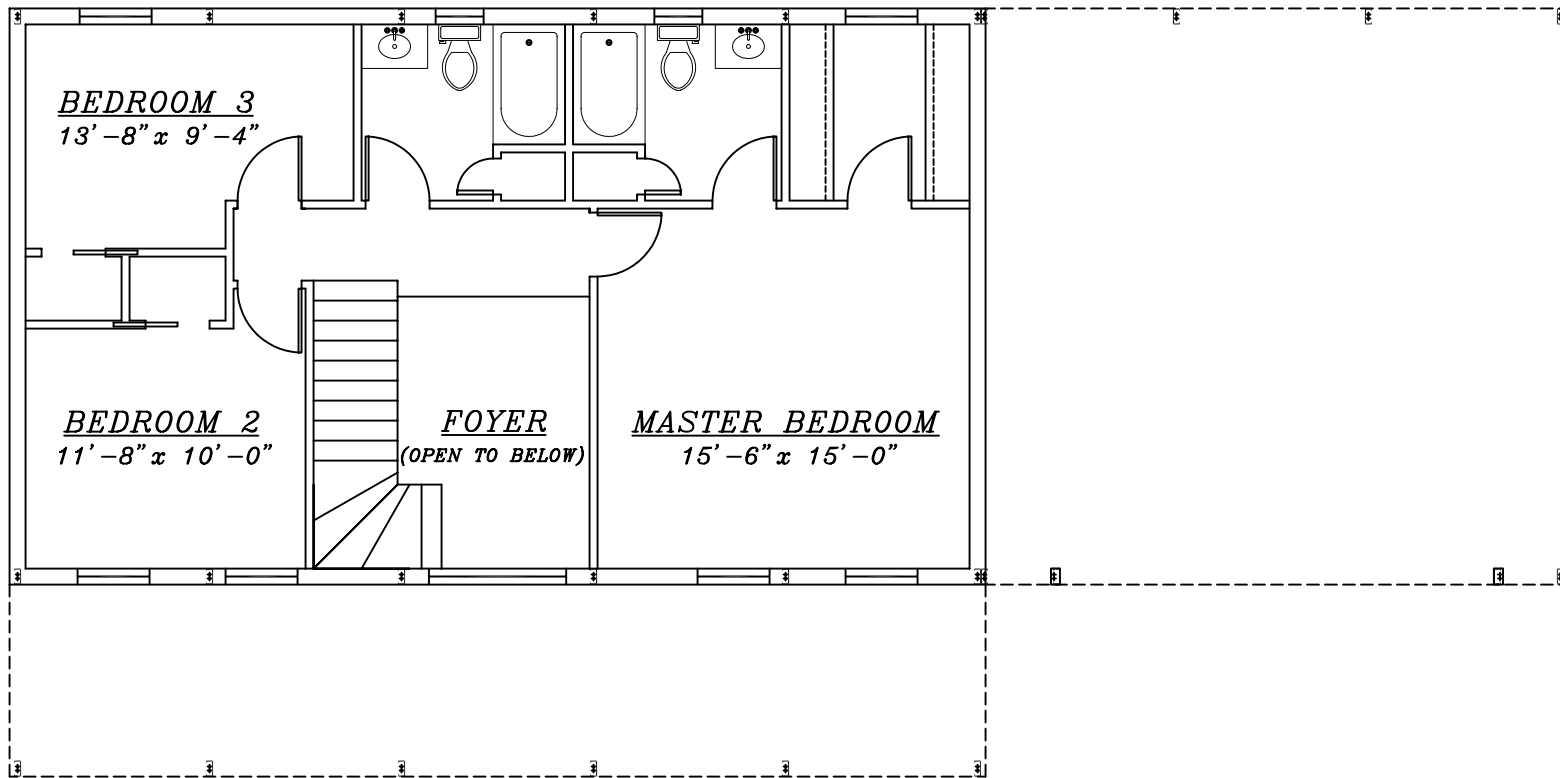
[Help/info](#)

<a href="#">Front/ Left Elevation</a>	<a href="#">Rear/ Right Elevation</a>
<a href="#">1st Floor Plan</a>	<a href="#">2nd Floor Plan</a>

\*Values are approximate

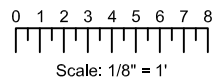


[RETURN TO HOME PAGE](#)



**2nd Floor**

**Kernstown III**



1 2 3 4 5 6 7 8  
| | | | | | | |



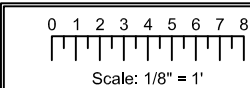
EXCALIBUR  
STEEL STRUCTURES  
ExcilburSteel.com  
423-624-1047



**Front**



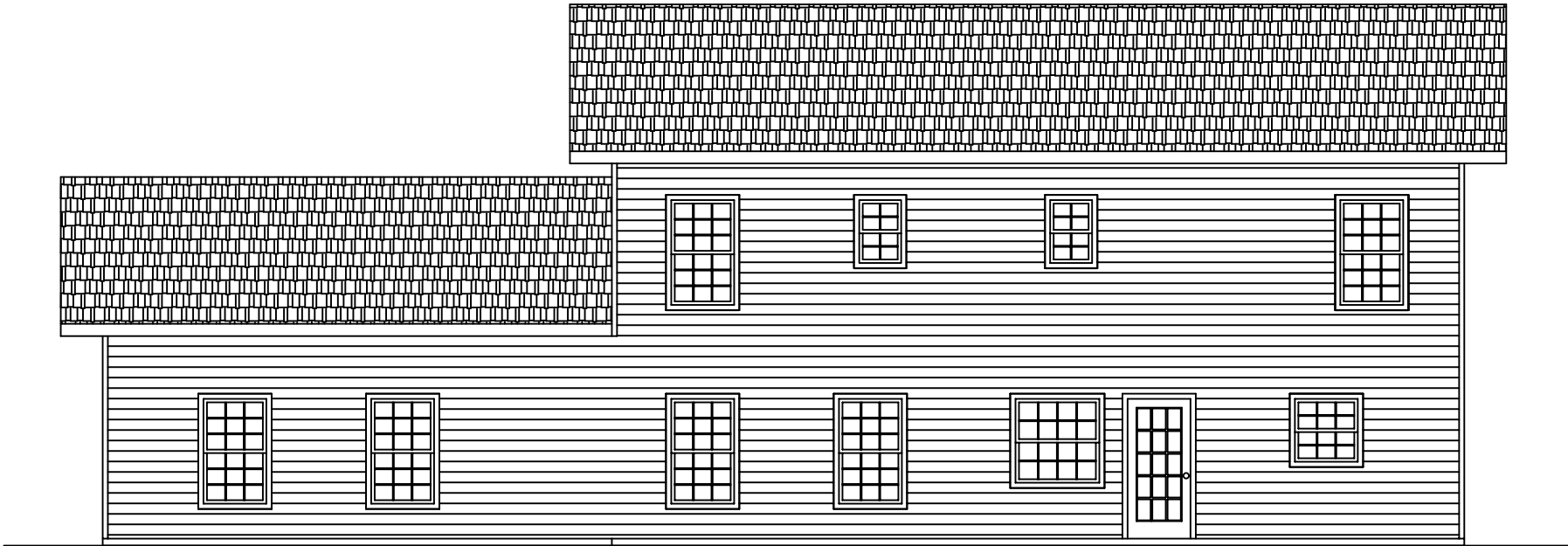
**Left**



**Kernstown III**

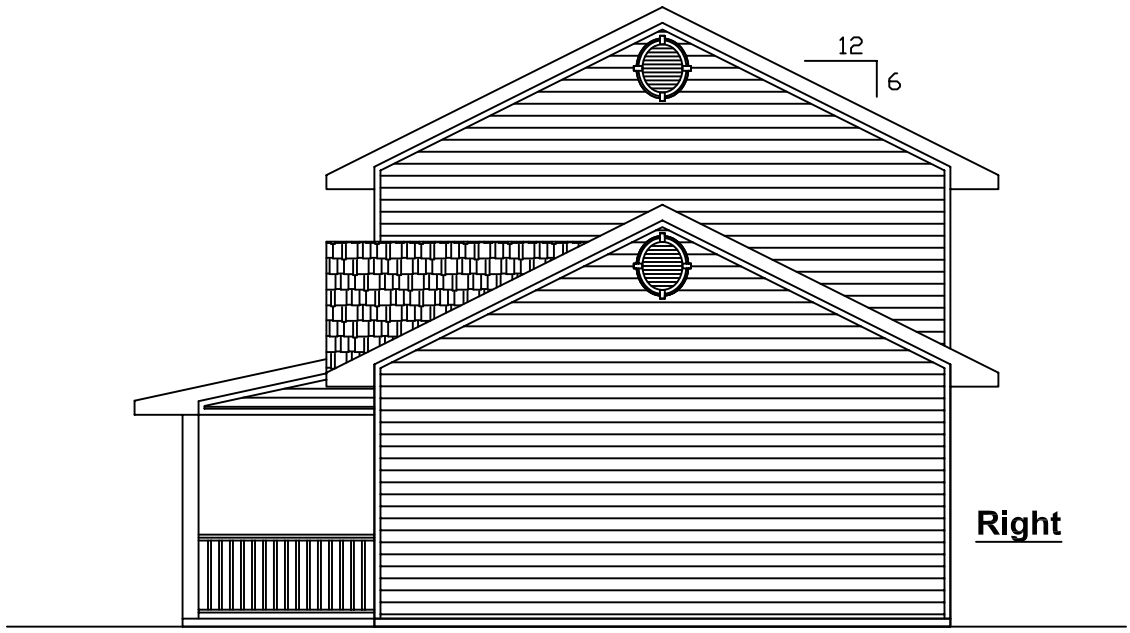


EXCALIBUR  
STEEL STRUCTURES  
ExcaliburSteel.com  
423-624-1047



**Rear**

12  
6

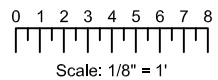
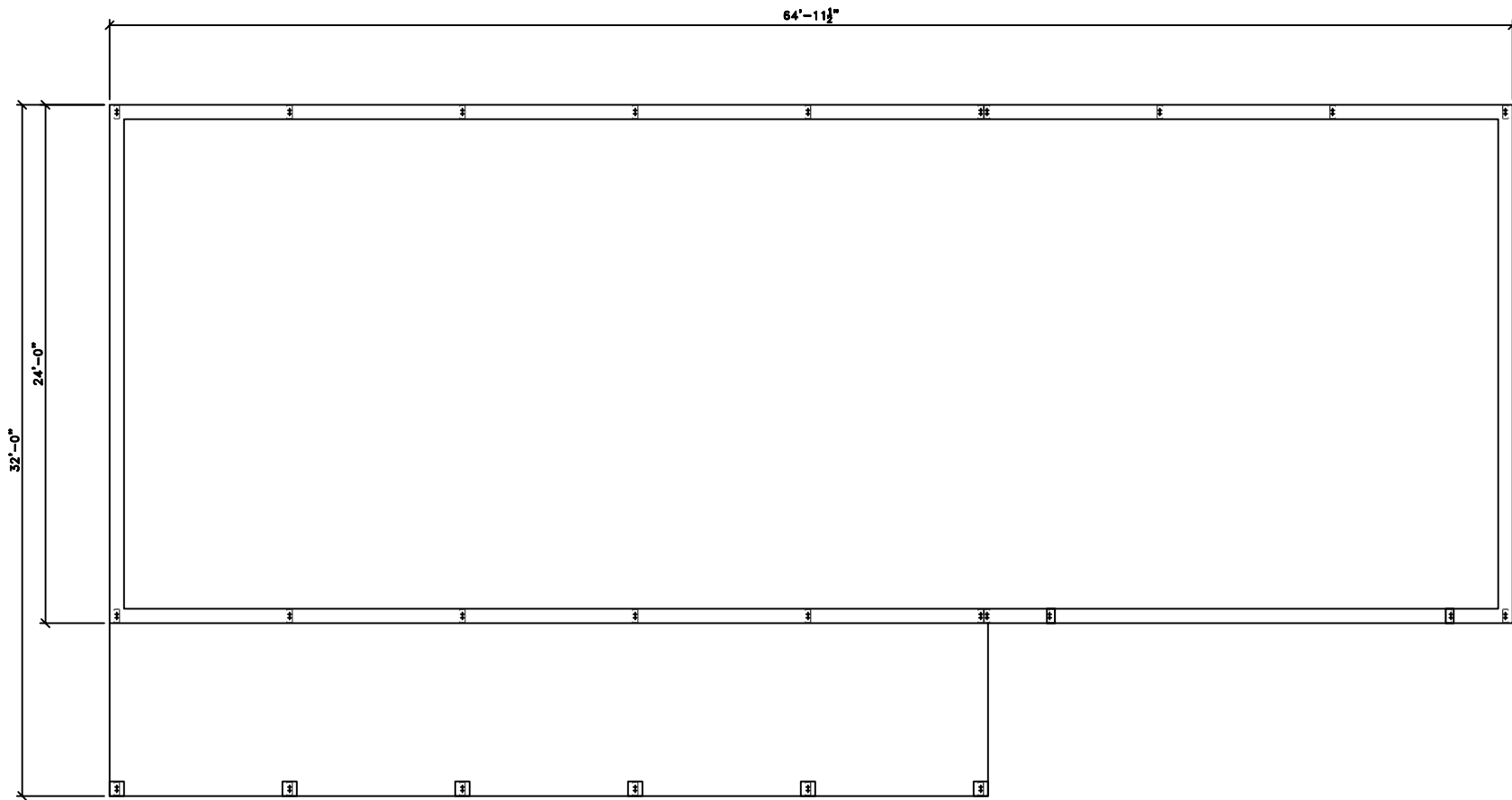


**Right**

**Kernstown III**

0 1 2 3 4 5 6 7 8  
 Scale: 1/8" = 1'  
 = COLUMN IN WALL

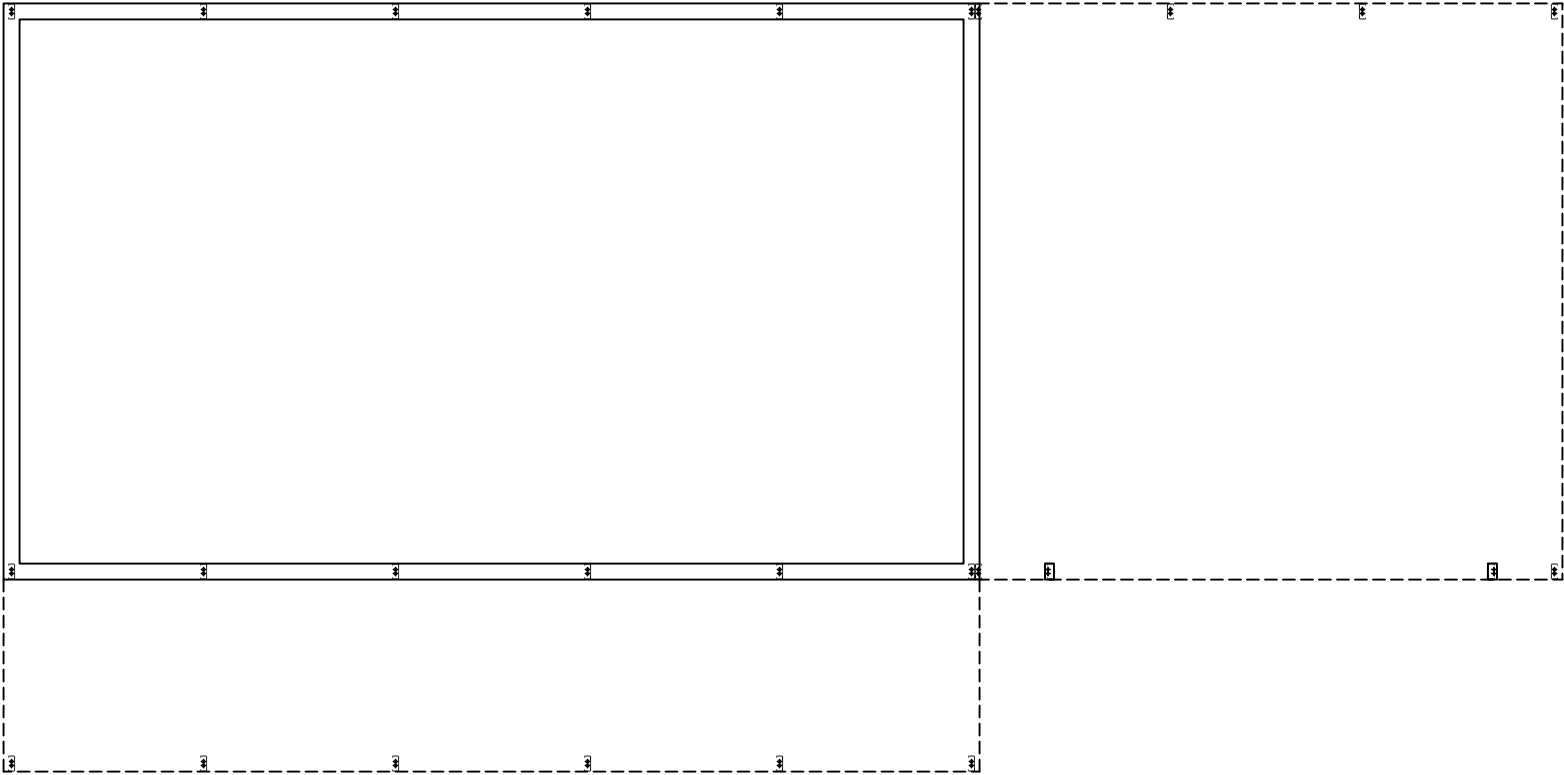
EXCALIBUR  
 STEEL STRUCTURES  
 ExcaliburSteel.com  
 423-624-1047



### Kernstown III

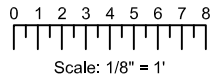


EXCALIBUR  
STEEL STRUCTURES  
ExcaliburSteel.com  
423-624-1047

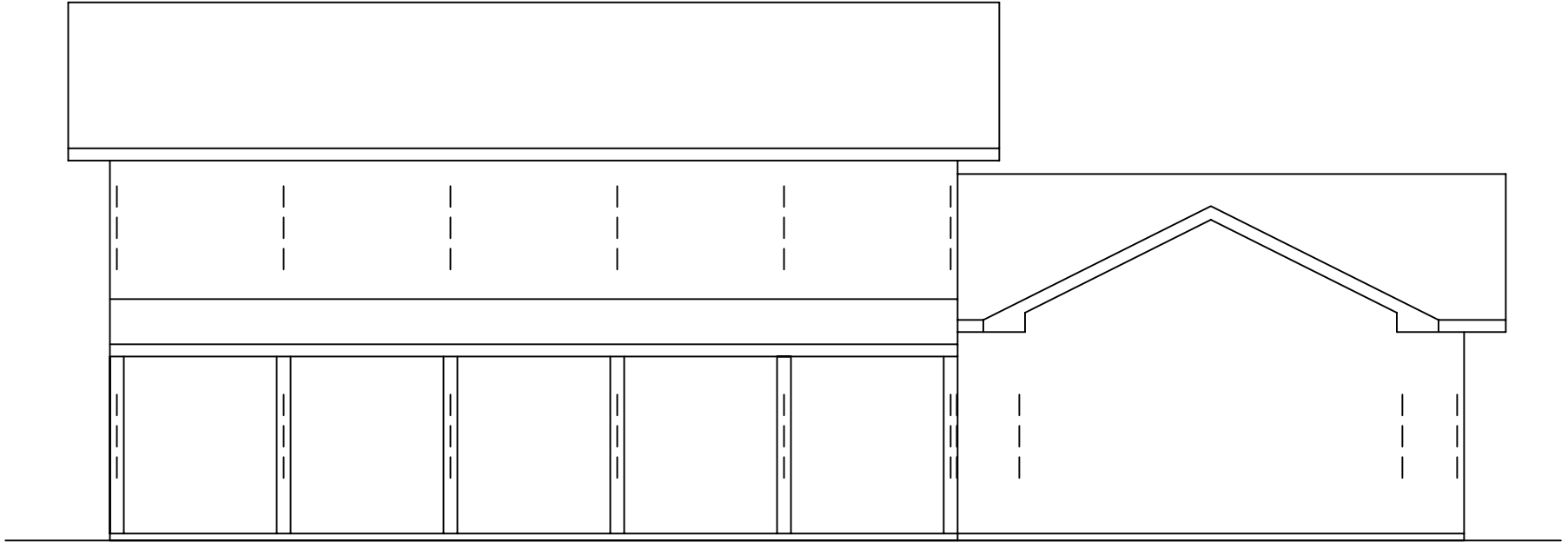


**2nd Floor**

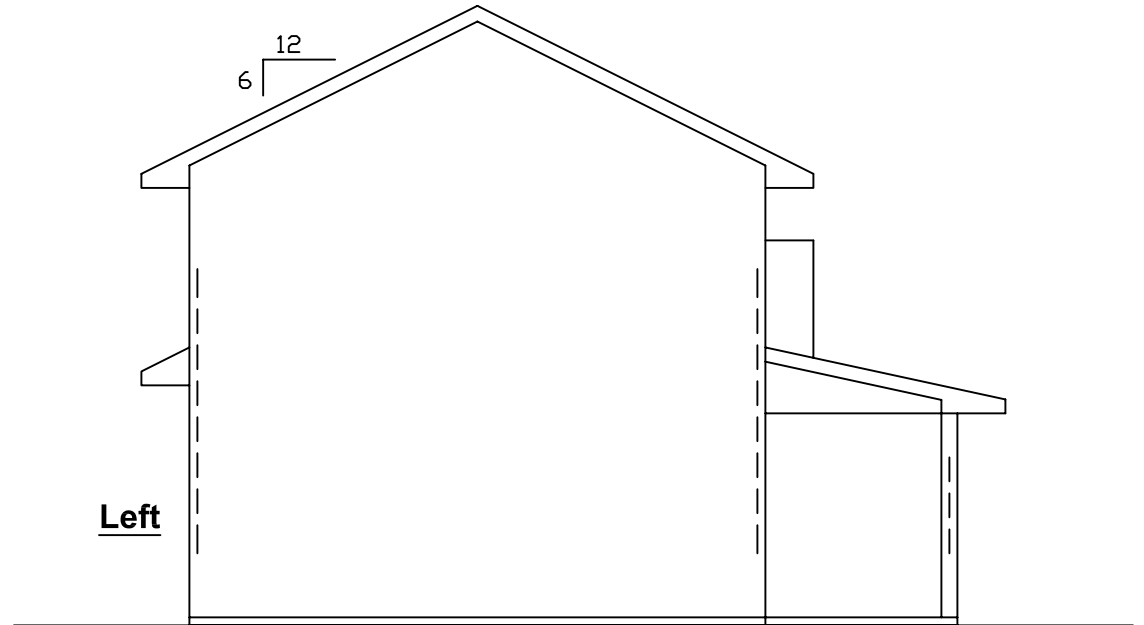
**Kernstown III**



EXCALIBUR  
STEEL STRUCTURES  
ExcaliburSteel.com  
423-624-1047



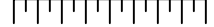
**Front**



**Left**

**Kernstown III**

0 1 2 3 4 5 6 7 8



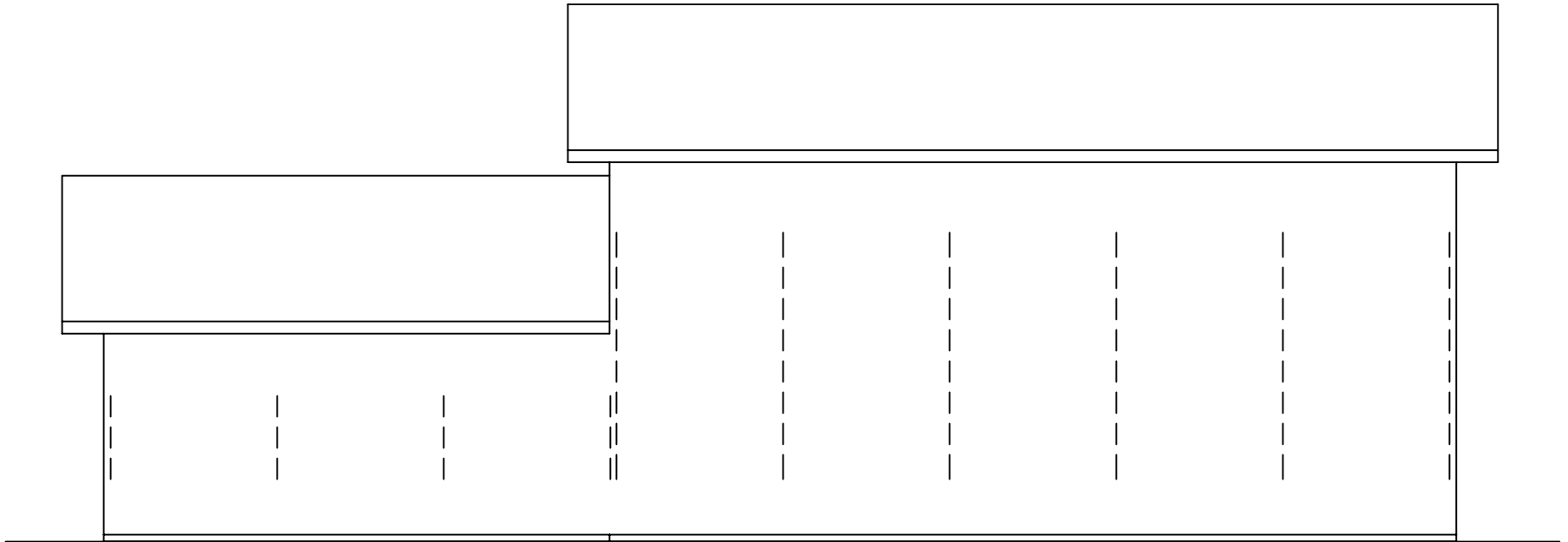
Scale: 1/8" = 1'



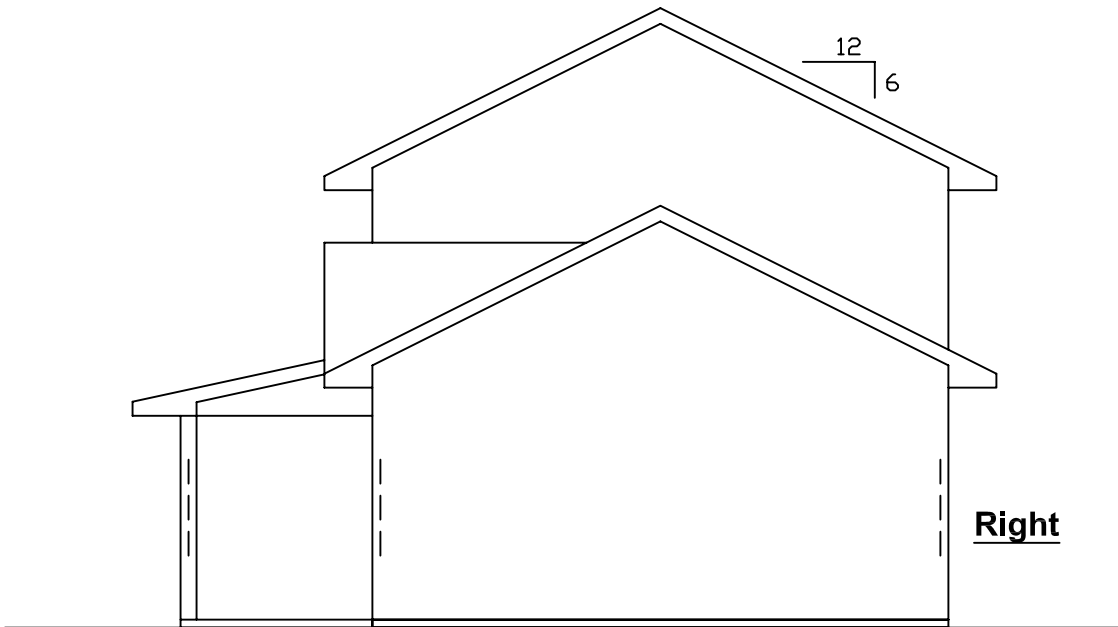
= COLUMN IN WALL



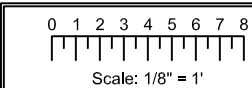
EXCALIBUR  
STEEL STRUCTURES  
ExcaliburSteel.com  
423-624-1047




Rear



Right



 = COLUMN IN WALL

**Kernstown III**