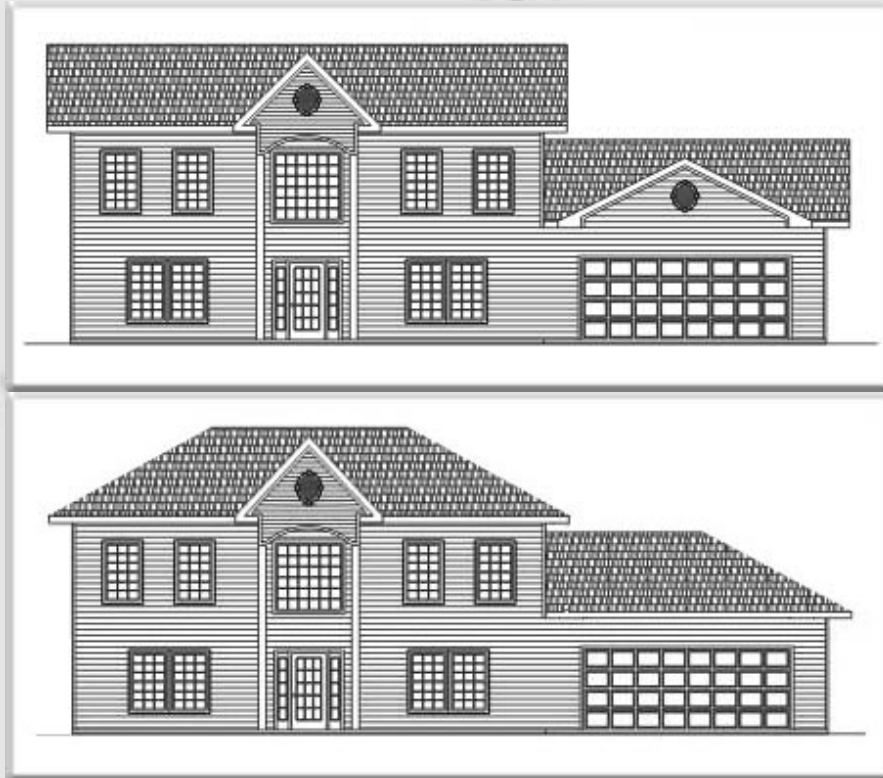




← **BACK** **CONTENTS** **NEXT** →

Kernstown I & II



Copyright© 2001 Excalibur Steel Structures of Tennessee, LLC.

Specifications*

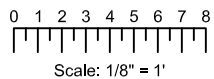
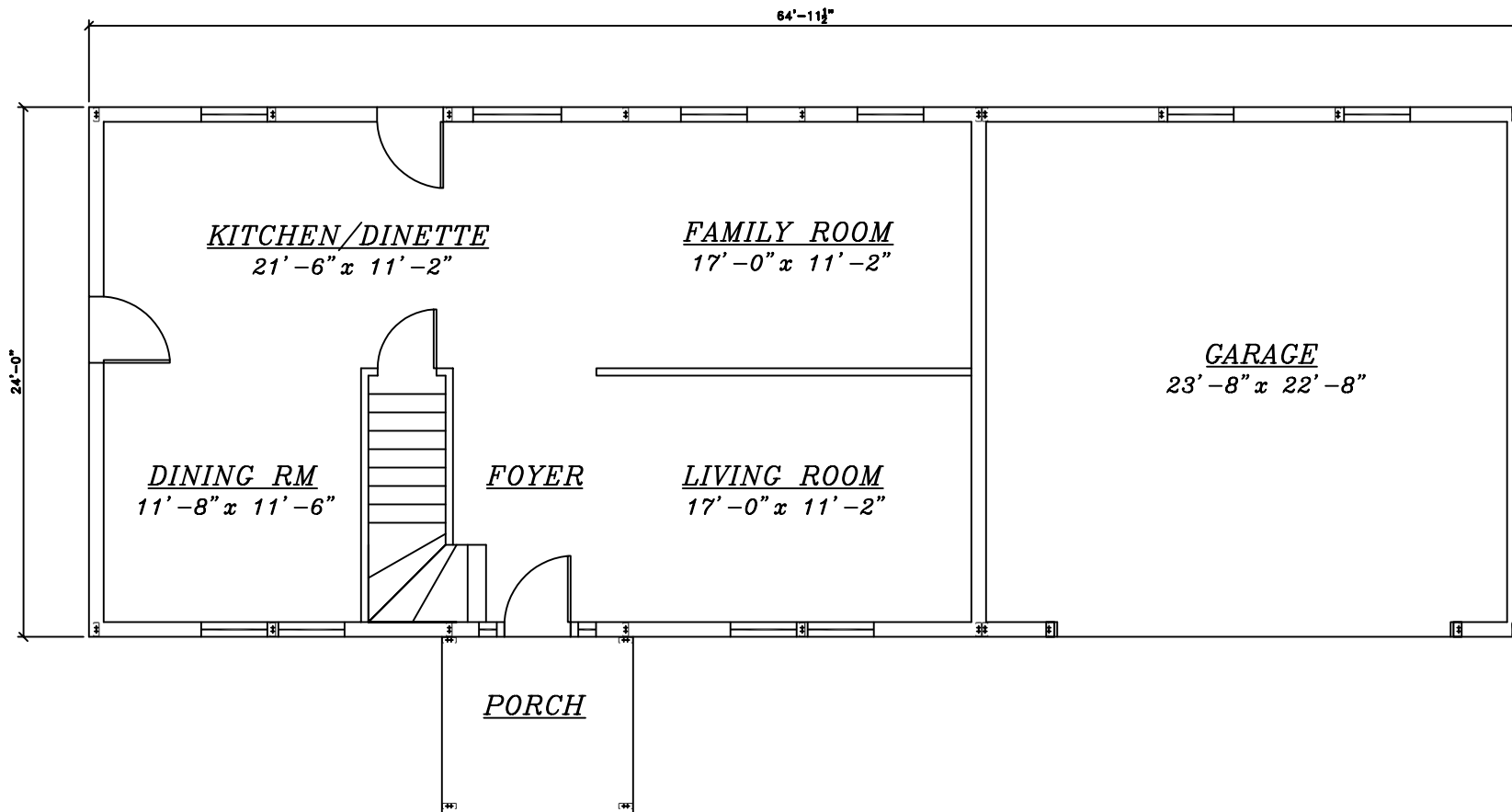
Living Area, 1st Floor:	976 s.f.	Dimensions (Overall):	65'-0" x 24'-0"
Living Area, 2nd Floor:	880 s.f.	Roof Pitch:	6/12
Utility:	n/a	Ceiling Height, 1st Flr.:	8'
Garage:	583 s.f.	Ceiling Height, 2nd Flr.:	8'
Porch, Front:	69 s.f.	Bedrooms:	3
Porch, Rear:	n/a	Baths:	2
Total Area:	2,508 s.f.	Fireplace:	n/a
Basement (optional):	976 s.f.	Standard Model Price:	Price List



Front/ Left Elevation	Rear/ Right Elevation
1st Floor Plan	2nd Floor Plan
Front/ Left Elevation	Rear/ Right Elevation
1st Floor Plan	2nd Floor Plan

I.

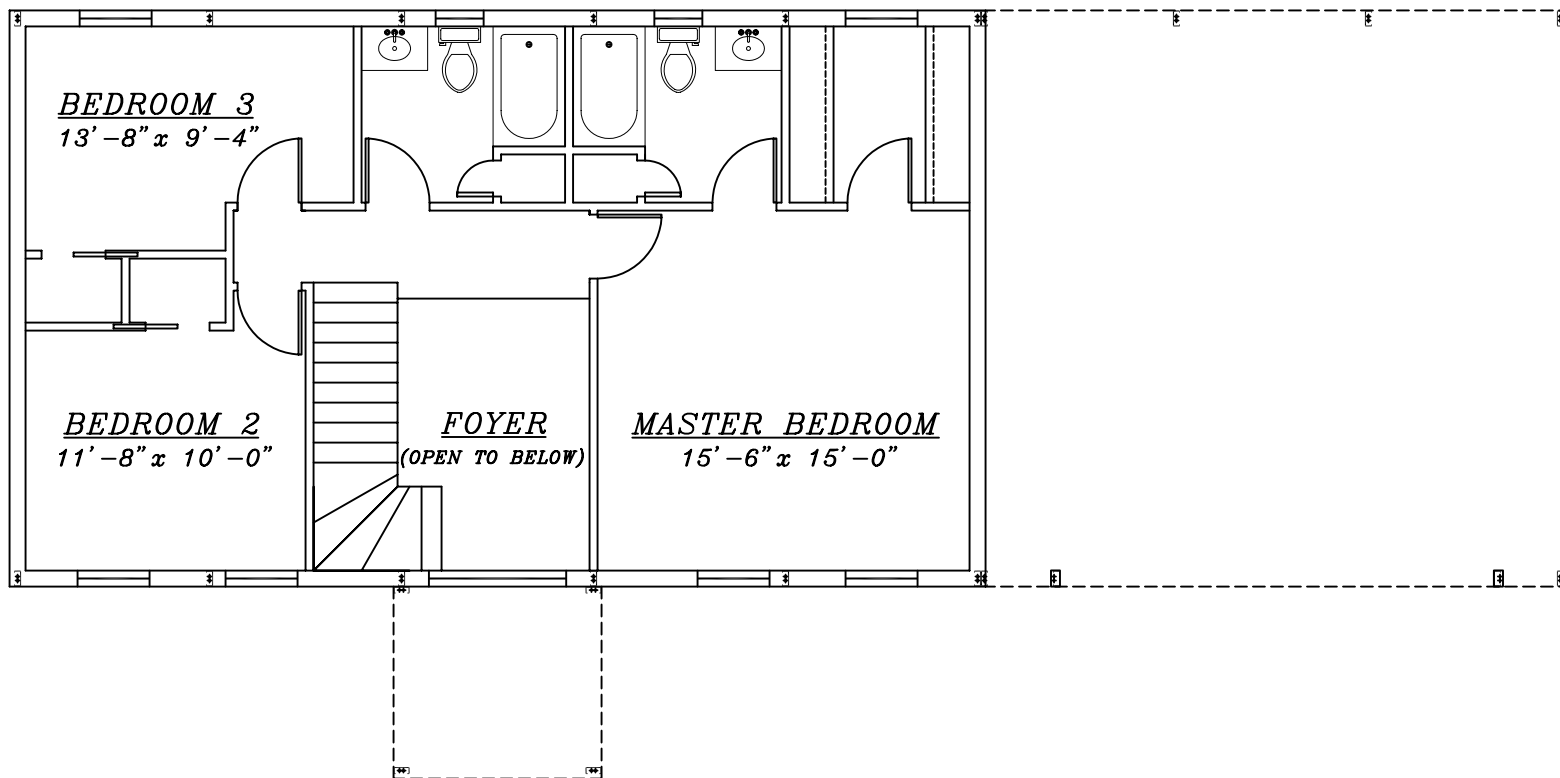
II.



Kernstown I & II

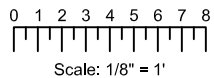


EXCALIBUR
STEEL STRUCTURES
ExcaliburSteel.com
423-624-1047



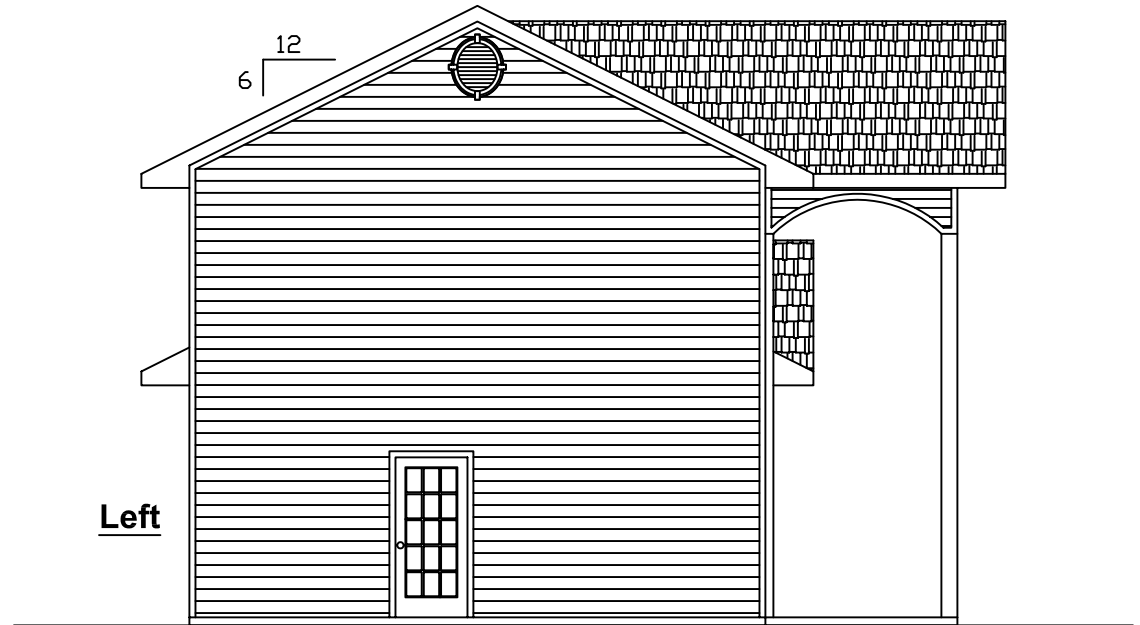
2nd Floor

Kernstown I & II



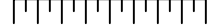


Front



Left

0 1 2 3 4 5 6 7 8



Scale: 1/8" = 1'

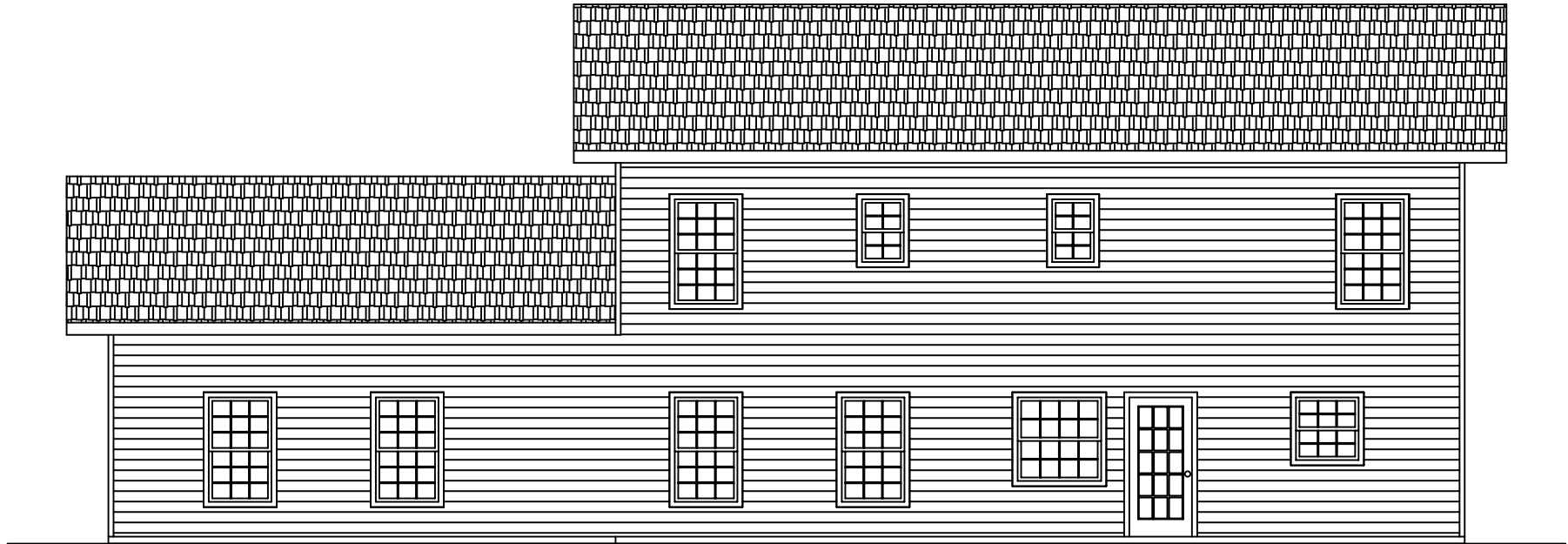


= COLUMN IN WALL

Kernstown I



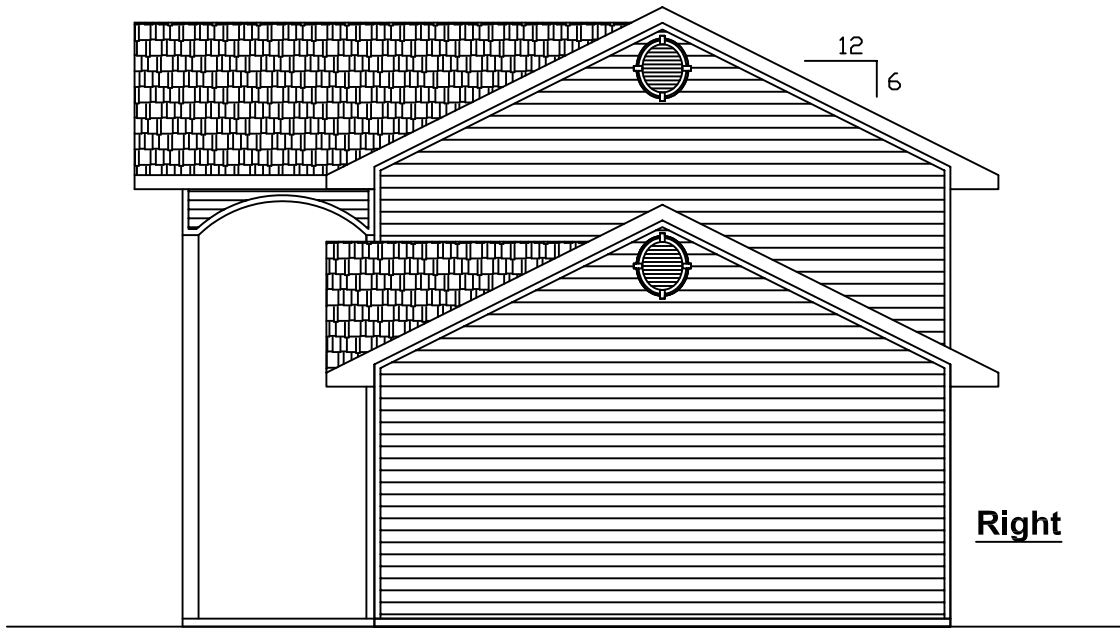
EXCALIBUR
STEEL STRUCTURES
ExcaliburSteel.com
423-624-1047



Rear

12
6

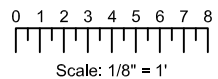
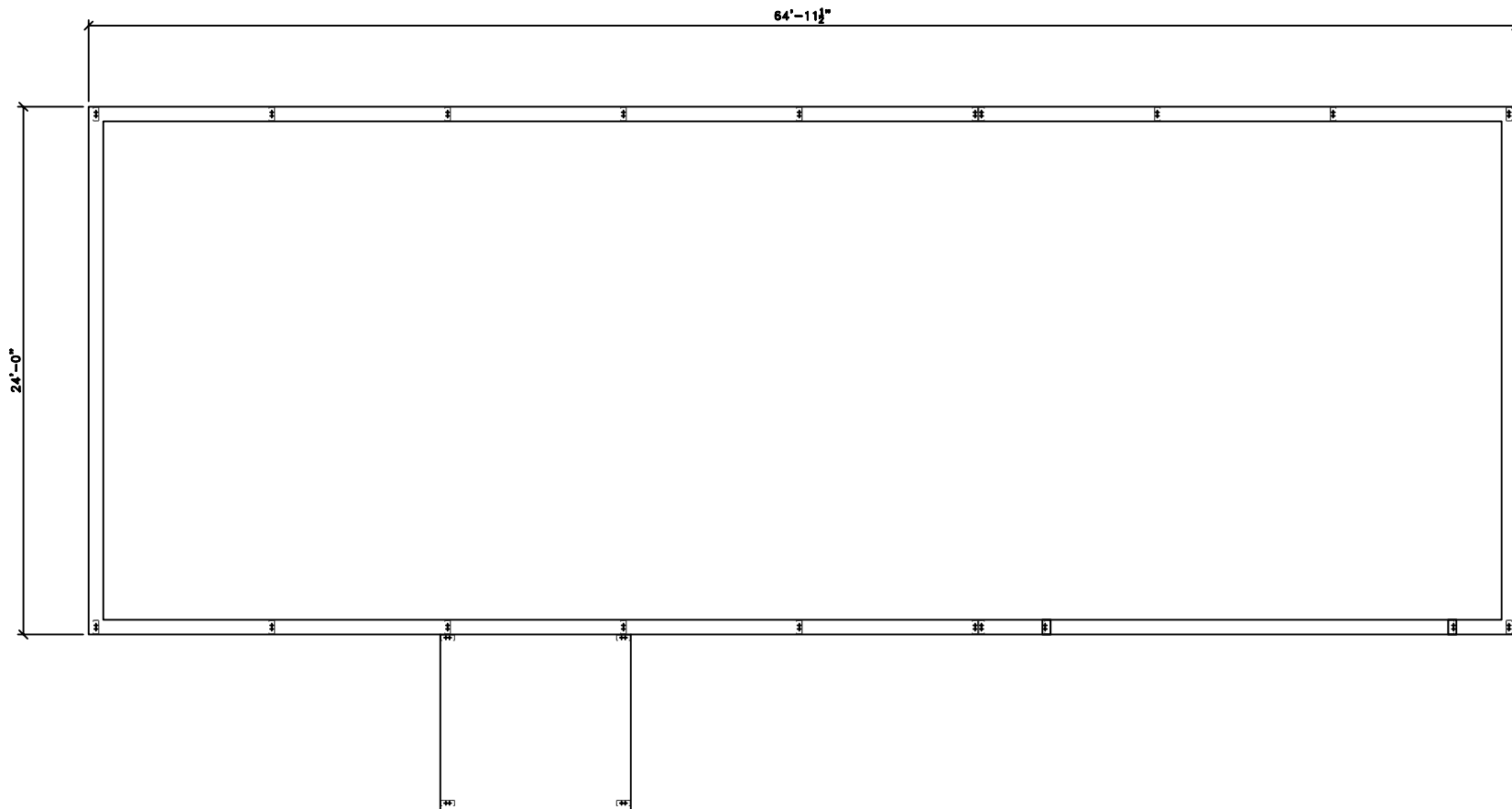
Right



0 1 2 3 4 5 6 7 8
 Scale: 1/8" = 1'
 = COLUMN IN WALL

Kernstown I

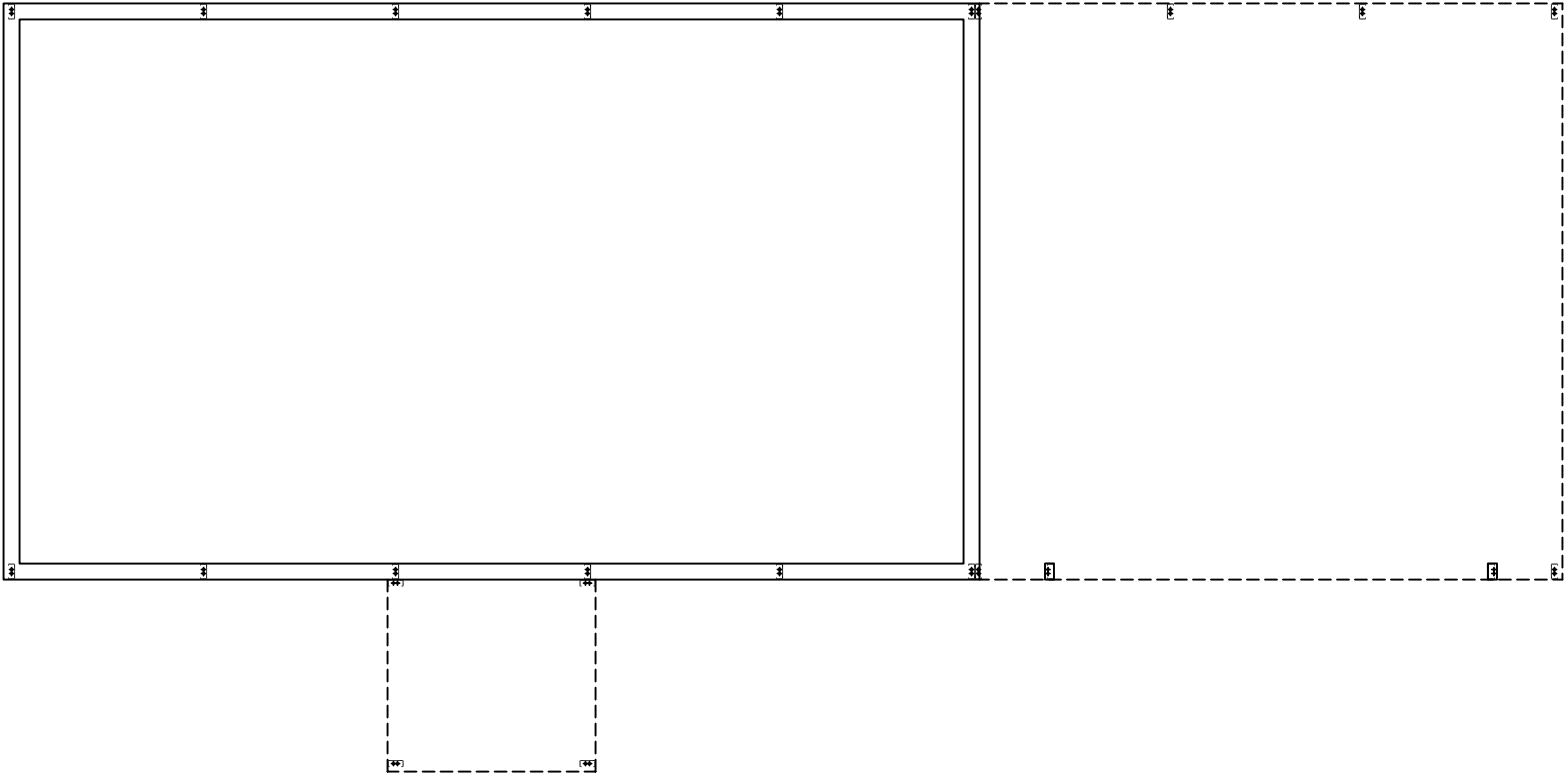
EXCALIBUR
 STEEL STRUCTURES
 ExcaliburSteel.com
 423-624-1047



Kernstown I & II

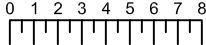


EXCALIBUR
STEEL STRUCTURES
ExcaliburSteel.com
423-624-1047



2nd Floor

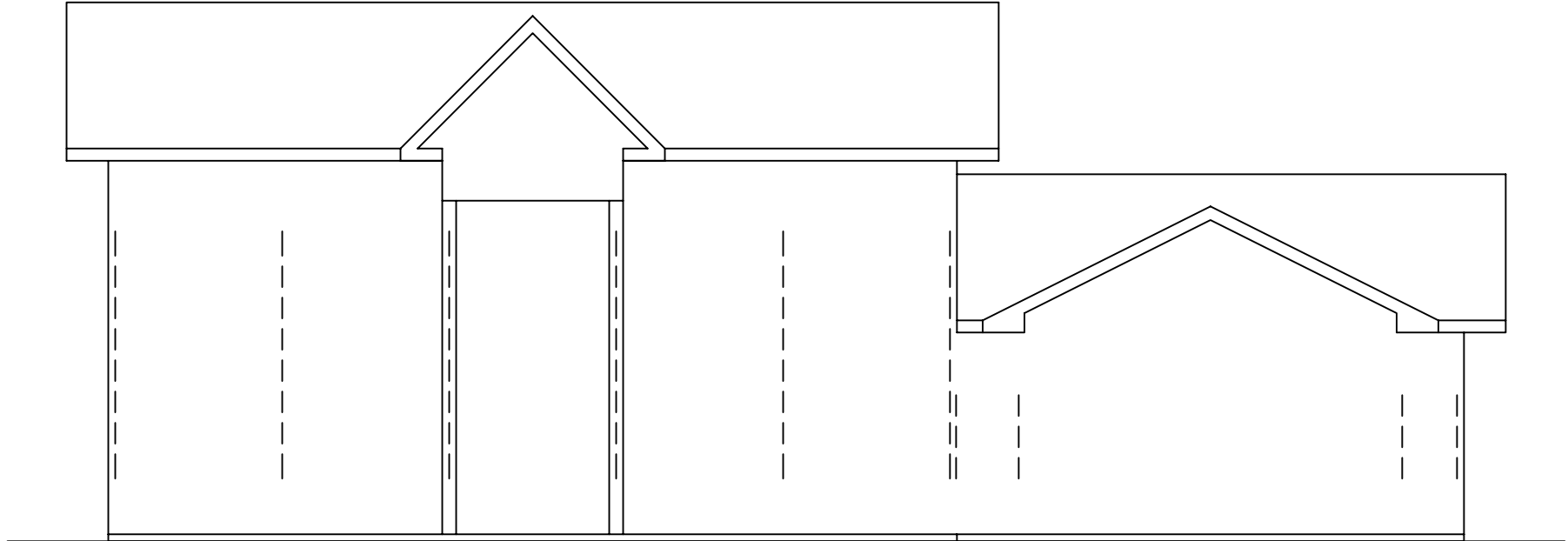
Kernstown I & II



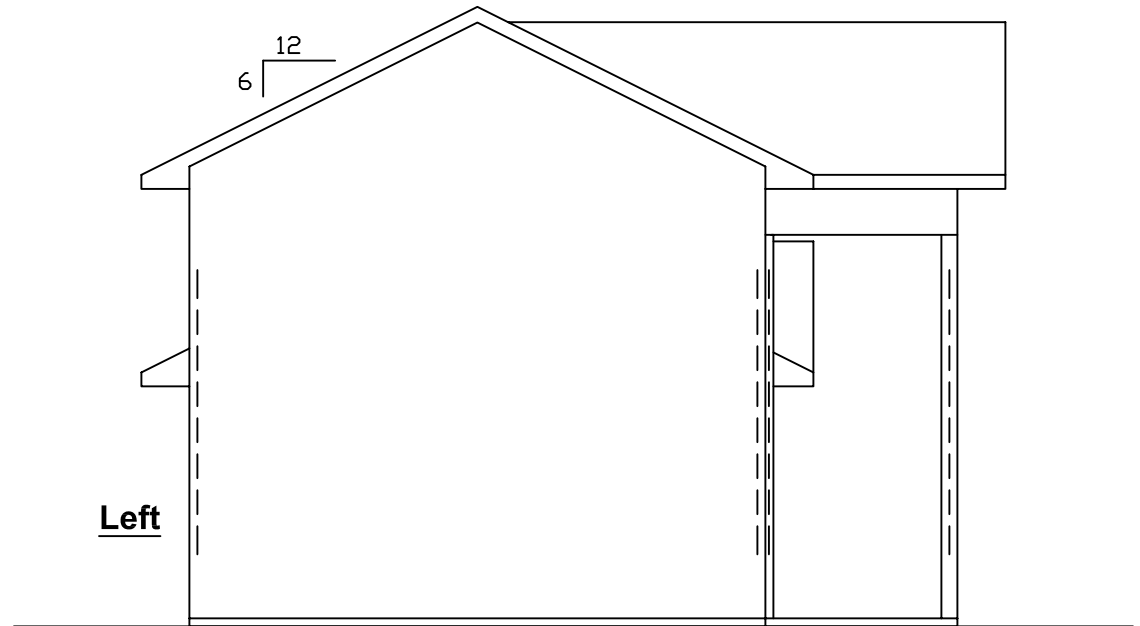
Scale: 1/8" = 1'



EXCALIBUR
STEEL STRUCTURES
ExcaliburSteel.com
423-624-1047

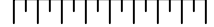


Front



Left

0 1 2 3 4 5 6 7 8



Scale: 1/8" = 1'

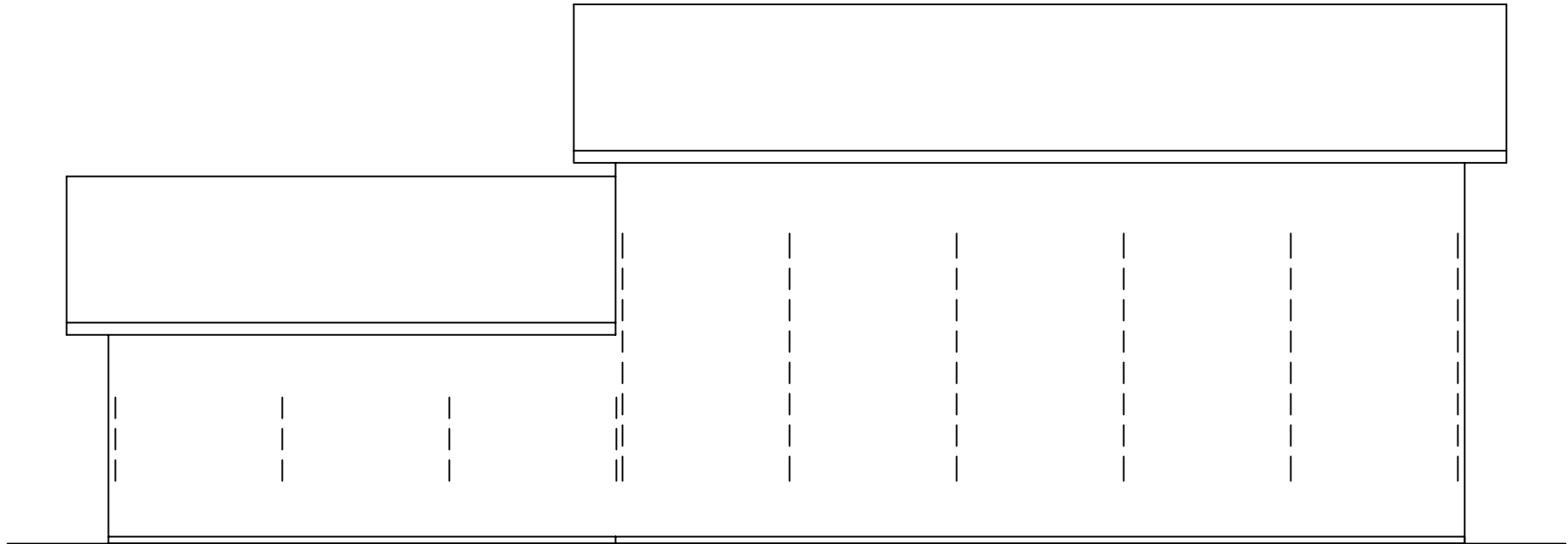


= COLUMN IN WALL

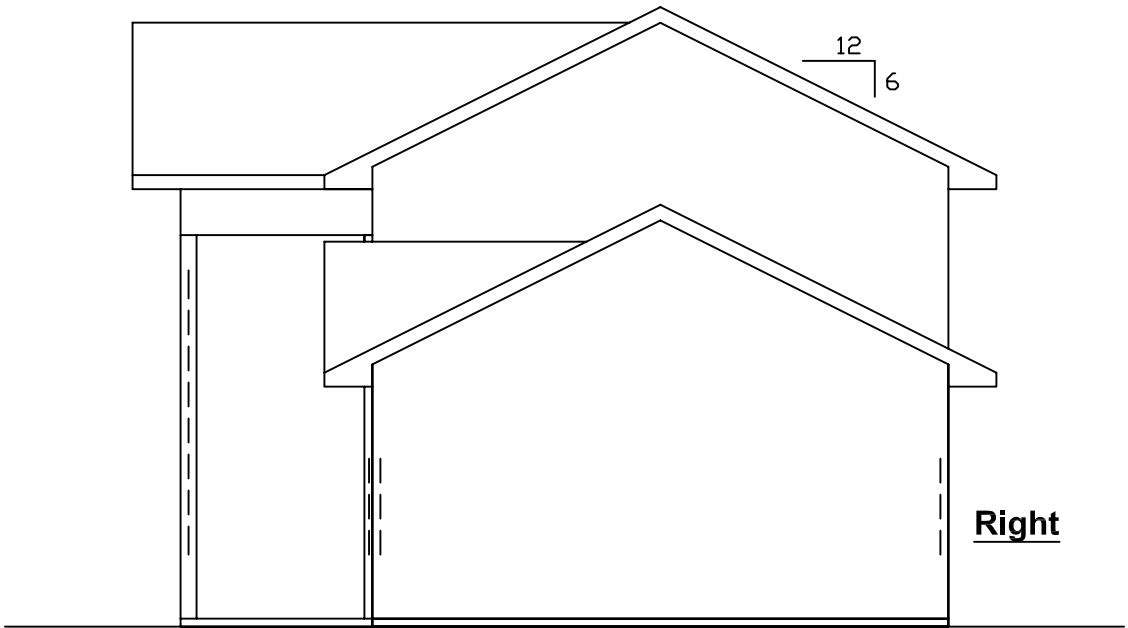
Kernstown I



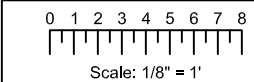
EXCALIBUR
STEEL STRUCTURES
ExcaliburSteel.com
423-624-1047



Rear



Right



 = COLUMN IN WALL

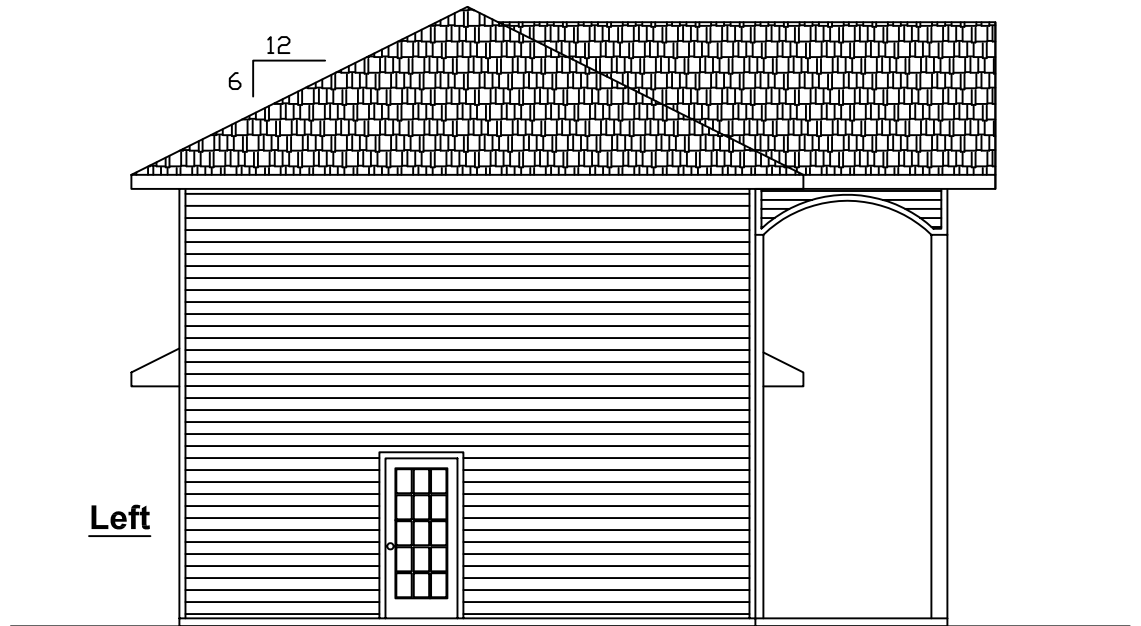
Kernstown I



EXCALIBUR
STEEL STRUCTURES
ExcaliburSteel.com
423-624-1047

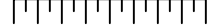


Front



Left

0 1 2 3 4 5 6 7 8



Scale: 1/8" = 1'

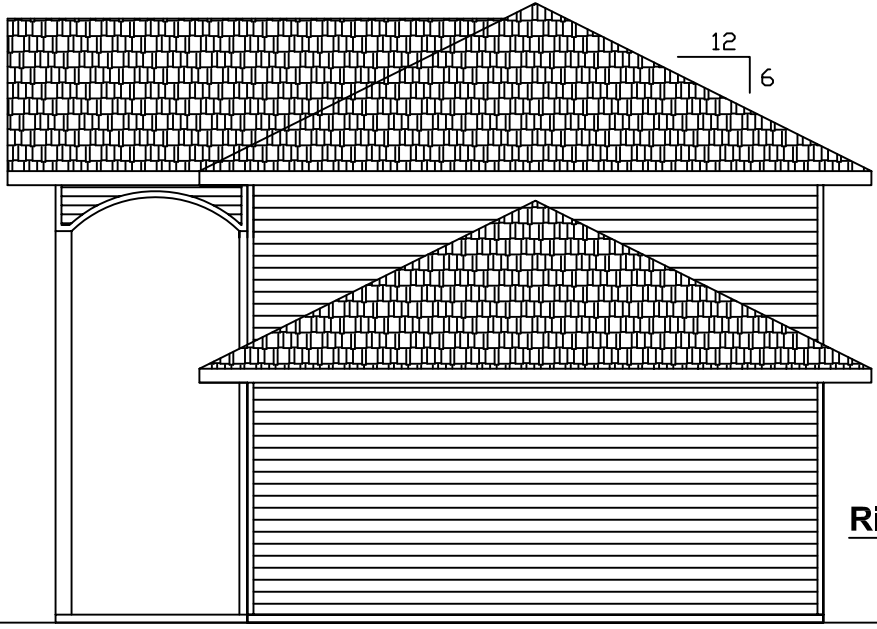


= COLUMN IN WALL

Kernstown II



EXCALIBUR
STEEL STRUCTURES
ExcaliburSteel.com
423-624-1047



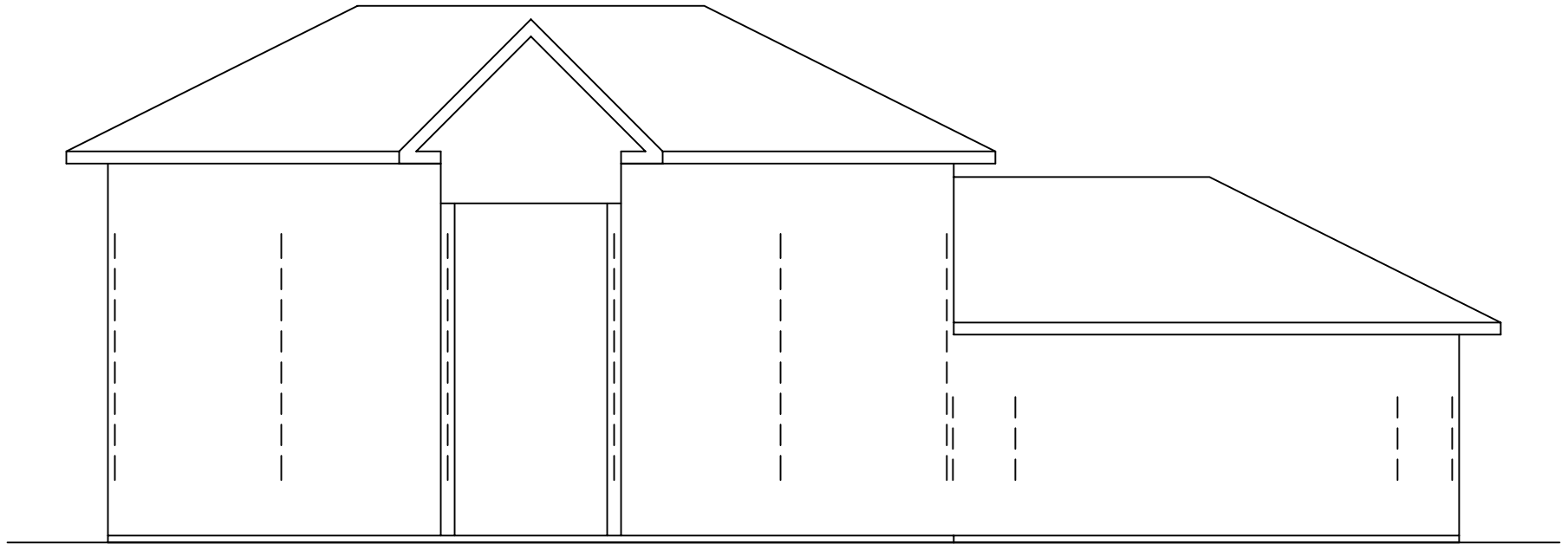
Rear

Right

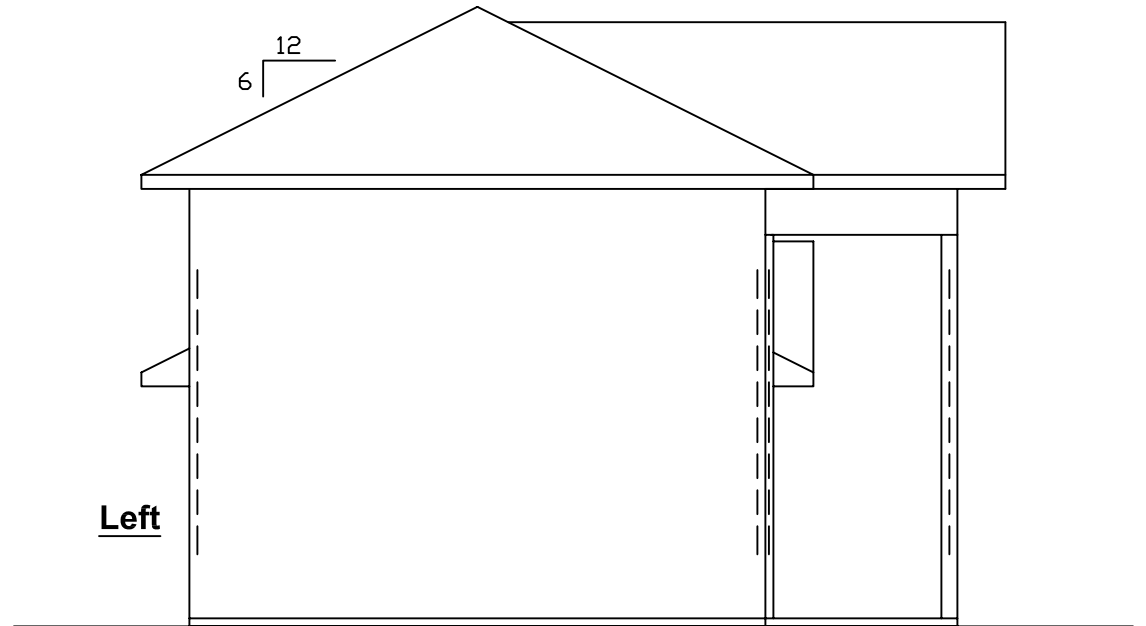
Kernstown II

0 1 2 3 4 5 6 7 8
 Scale: 1/8" = 1'
 = COLUMN IN WALL

EXCALIBUR
 STEEL STRUCTURES
 ExcaliburSteel.com
 423-624-1047

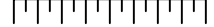


Front



Left

0 1 2 3 4 5 6 7 8



Scale: 1/8" = 1'

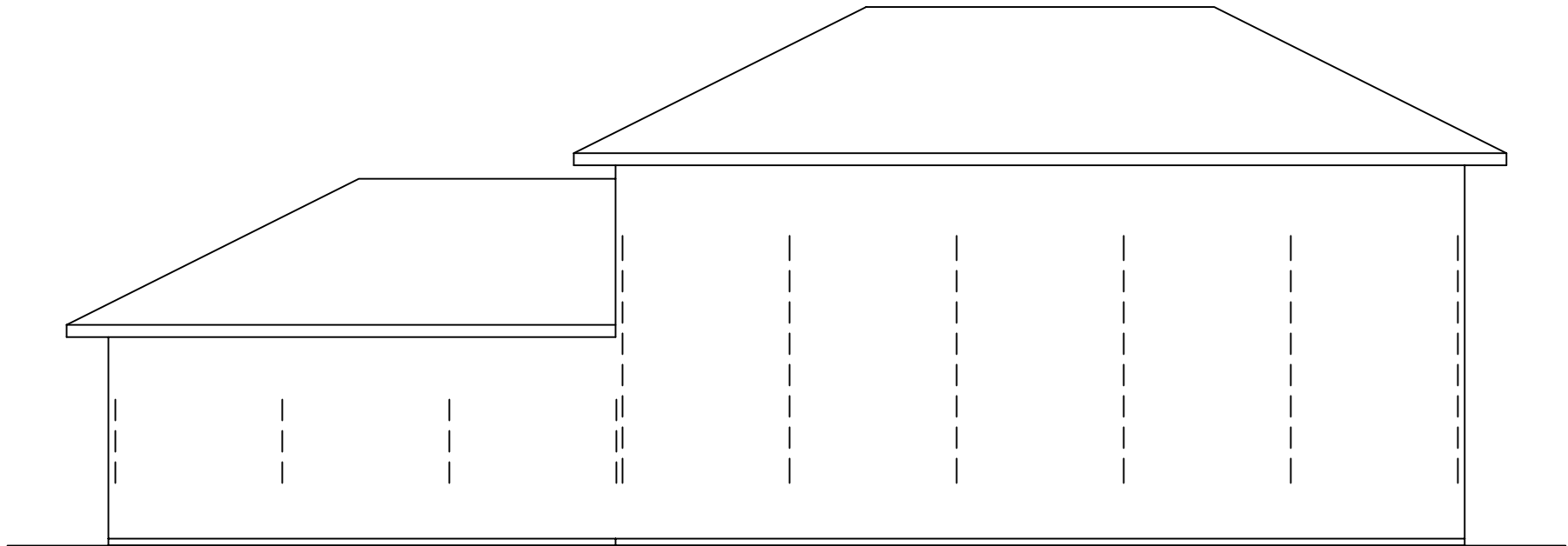


= COLUMN IN WALL

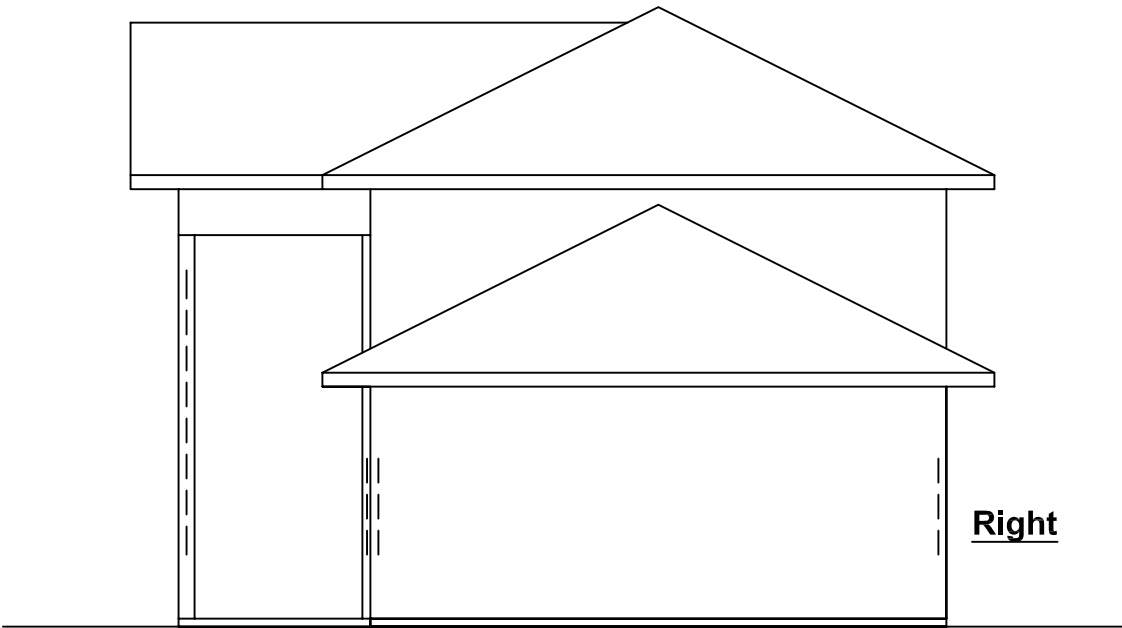
Kernstown II



EXCALIBUR
STEEL STRUCTURES
ExcaliburSteel.com
423-624-1047



Rear



Right