



[← BACK](#) [CONTENTS](#) [NEXT →](#)

Kennesaw IV



Copyright© 2000 Excalibur Steel Structures of Tennessee, LLC.

Specifications*

Living Area, 1st Floor:	1,158 s.f.	Dimensions (Overall):	45'-8" x 34'-0"
Living Area, 2nd Floor:	1,056 s.f.	Roof Pitch:	12/12
Utility:	71 s.f.	Ceiling Height, 1st Flr.:	9'
Garage:	n/a	Ceiling Height, 2nd Flr.:	8'
Porch, Front:	274 s.f.	Bedrooms:	3
Porch, Rear:	50 s.f.	Baths:	2
Total Area:	2,609 s.f.	Fireplace:	n/a
Basement (optional):	1,229 s.f.	Standard Model Price:	Price List



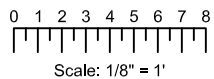
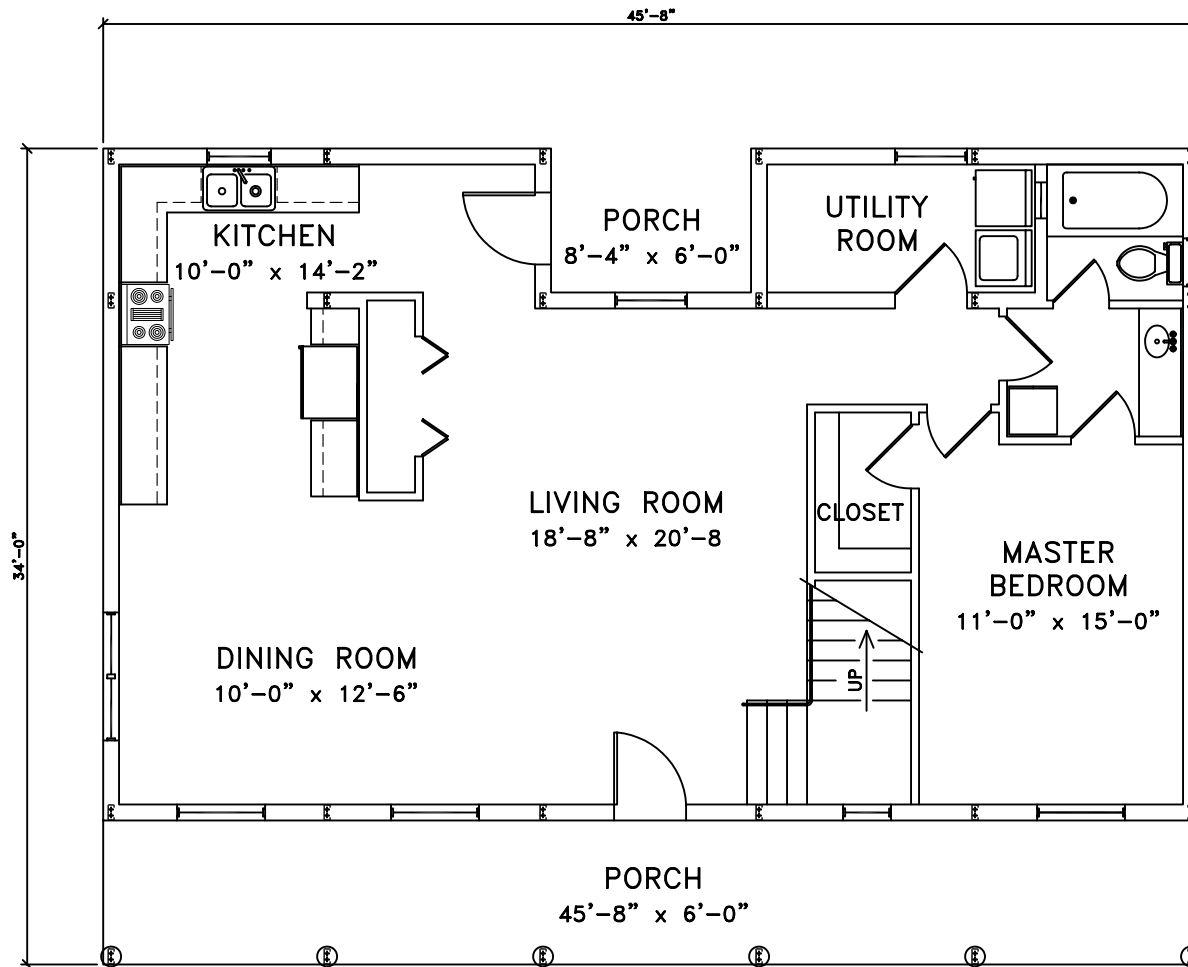
[Help/info](#)

Front/ Left Elevation	Rear/ Right Elevation
1st Floor Plan	2nd Floor Plan

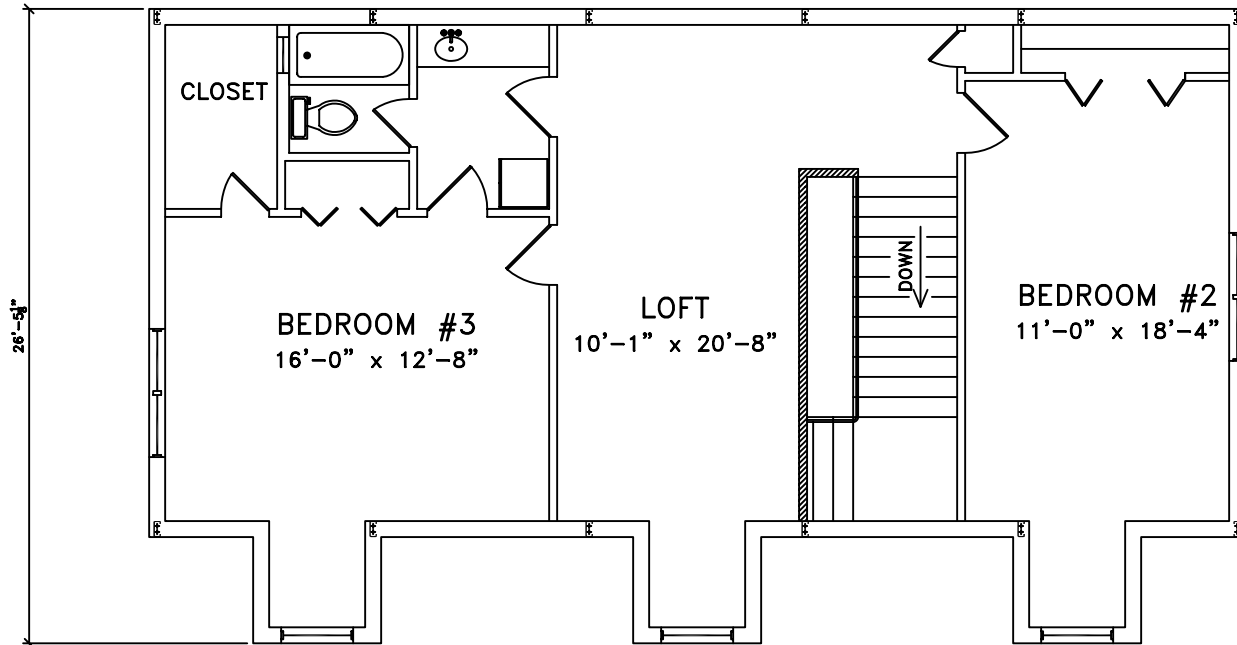
*Values are approximate



[RETURN TO HOME PAGE](#)

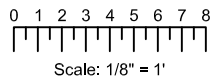


Kennesaw IV



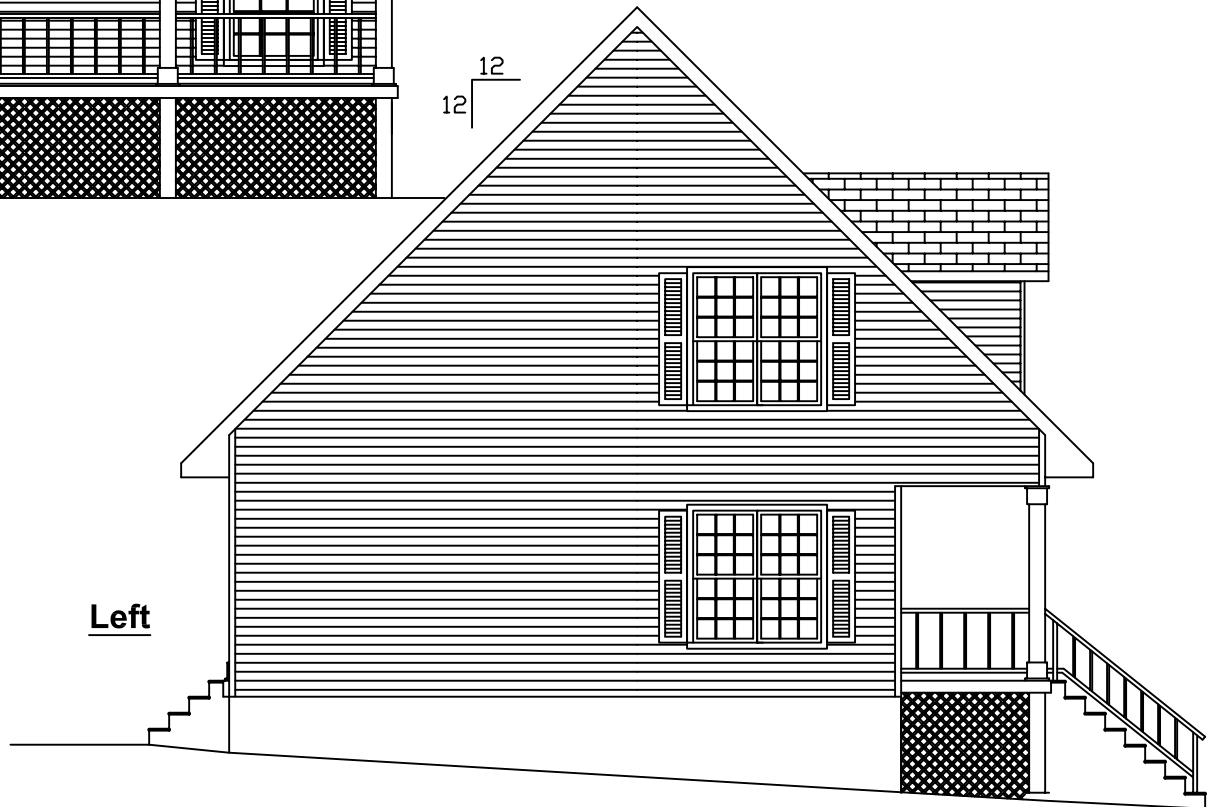
2nd Floor

Kennesaw IV



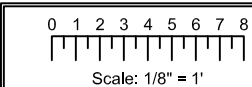


Front



Left

12
12

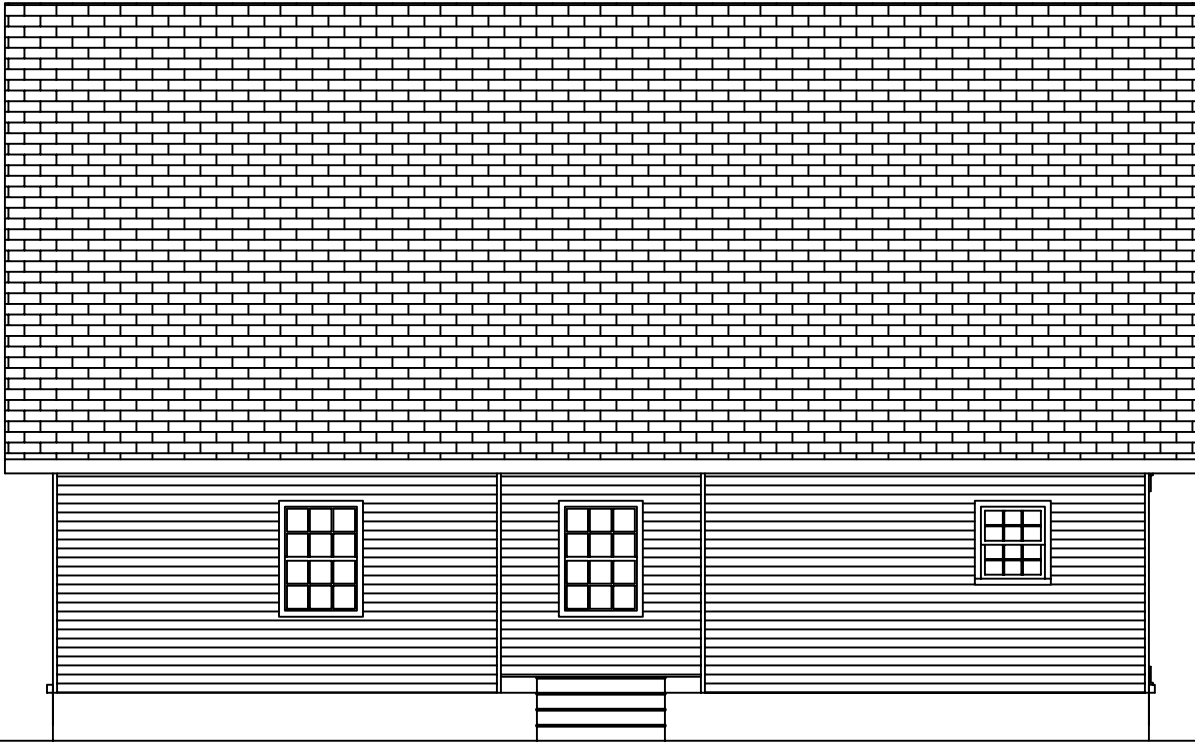


 = COLUMN IN WALL

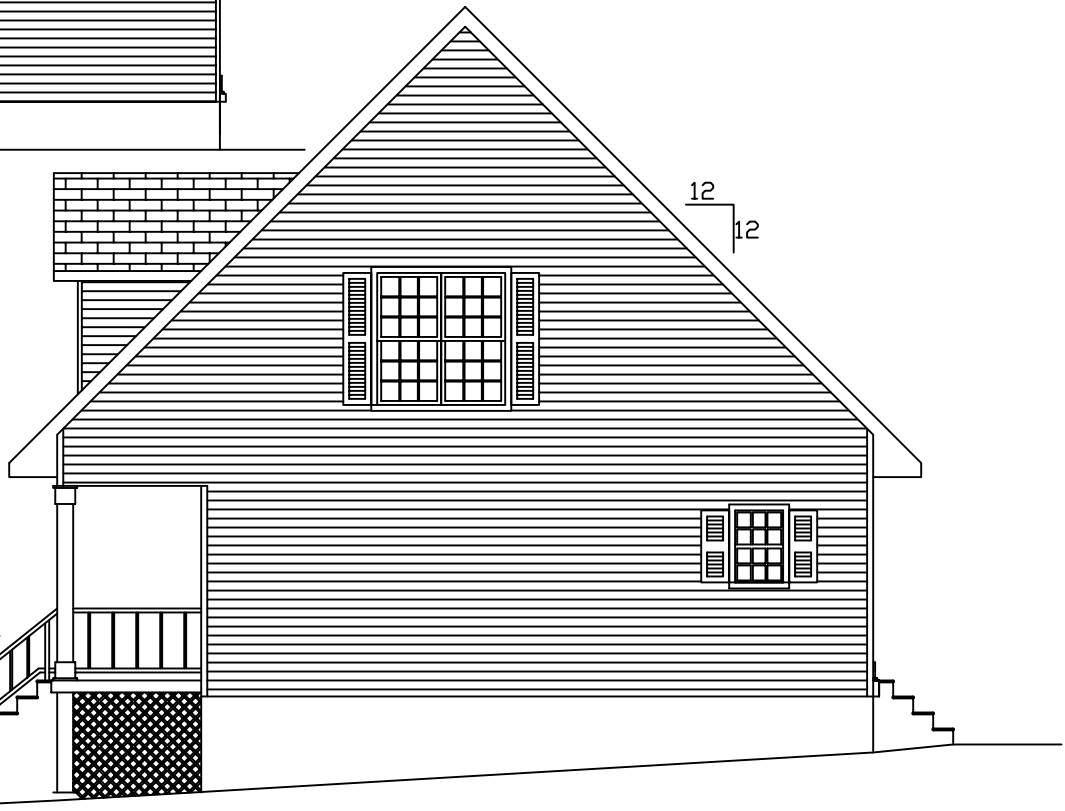
Kennesaw IV



EXCALIBUR
STEEL STRUCTURES
ExcaliburSteel.com
423-624-1047

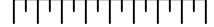


Rear



Right

0 1 2 3 4 5 6 7 8



Scale: 1/8" = 1'

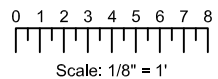
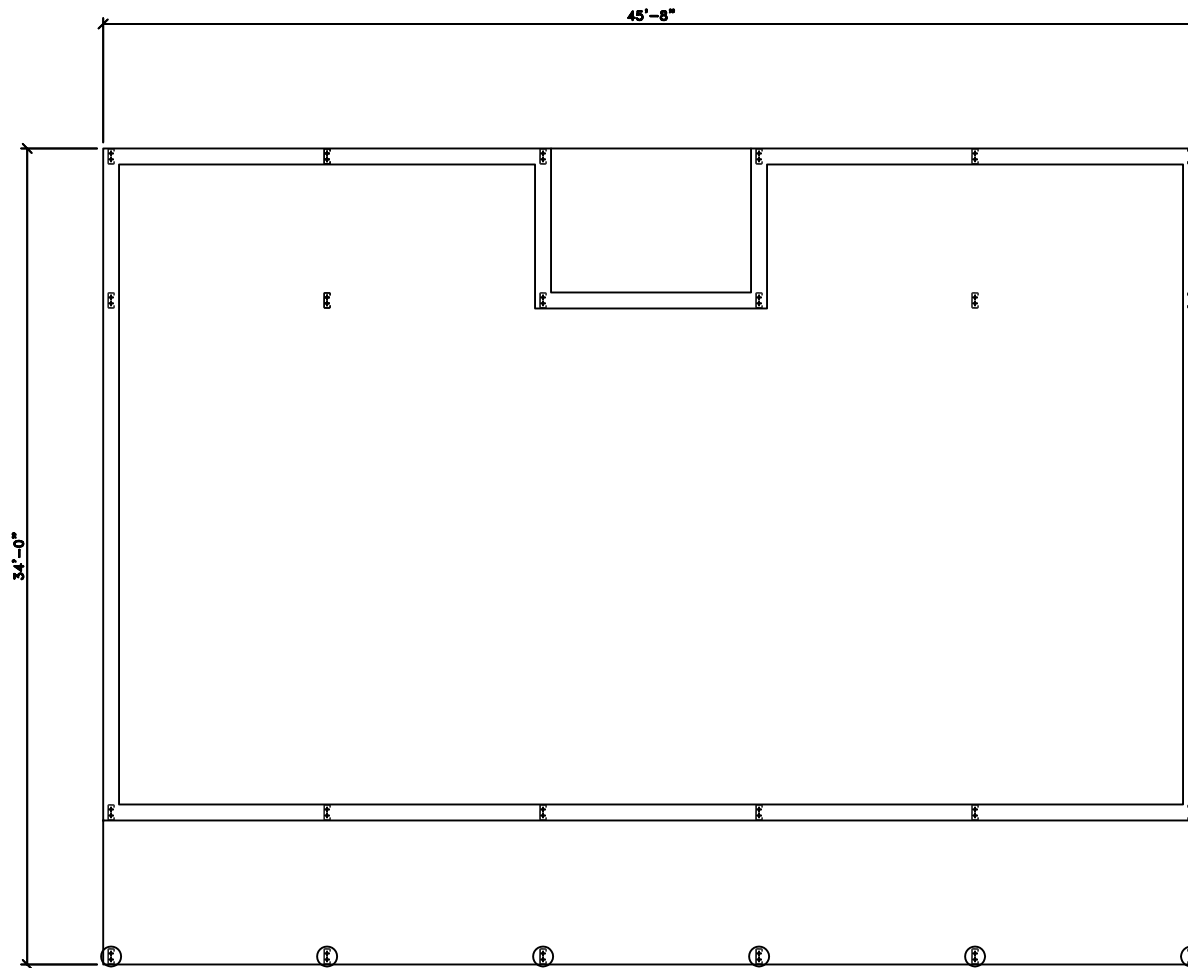


= COLUMN IN WALL

Kennesaw IV



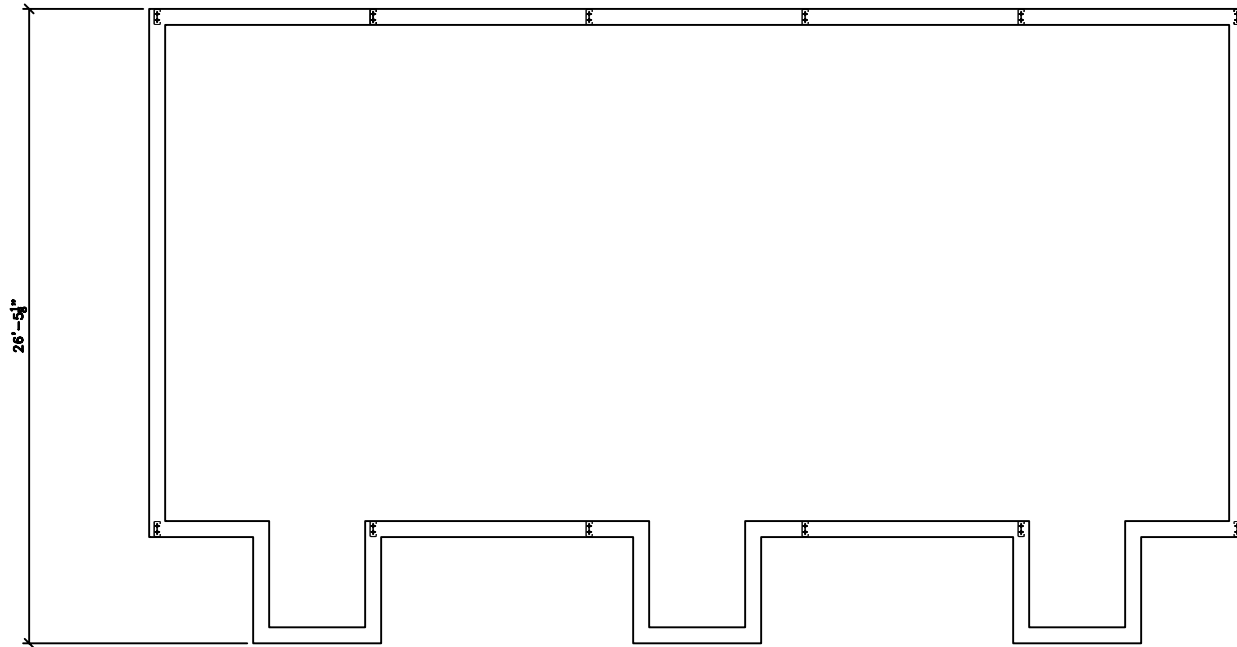
EXCALIBUR
STEEL STRUCTURES
ExcaliburSteel.com
423-624-1047



Kennesaw IV

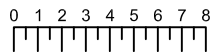


EXCALIBUR
STEEL STRUCTURES
ExcaliburSteel.com
423-624-1047



2nd Floor

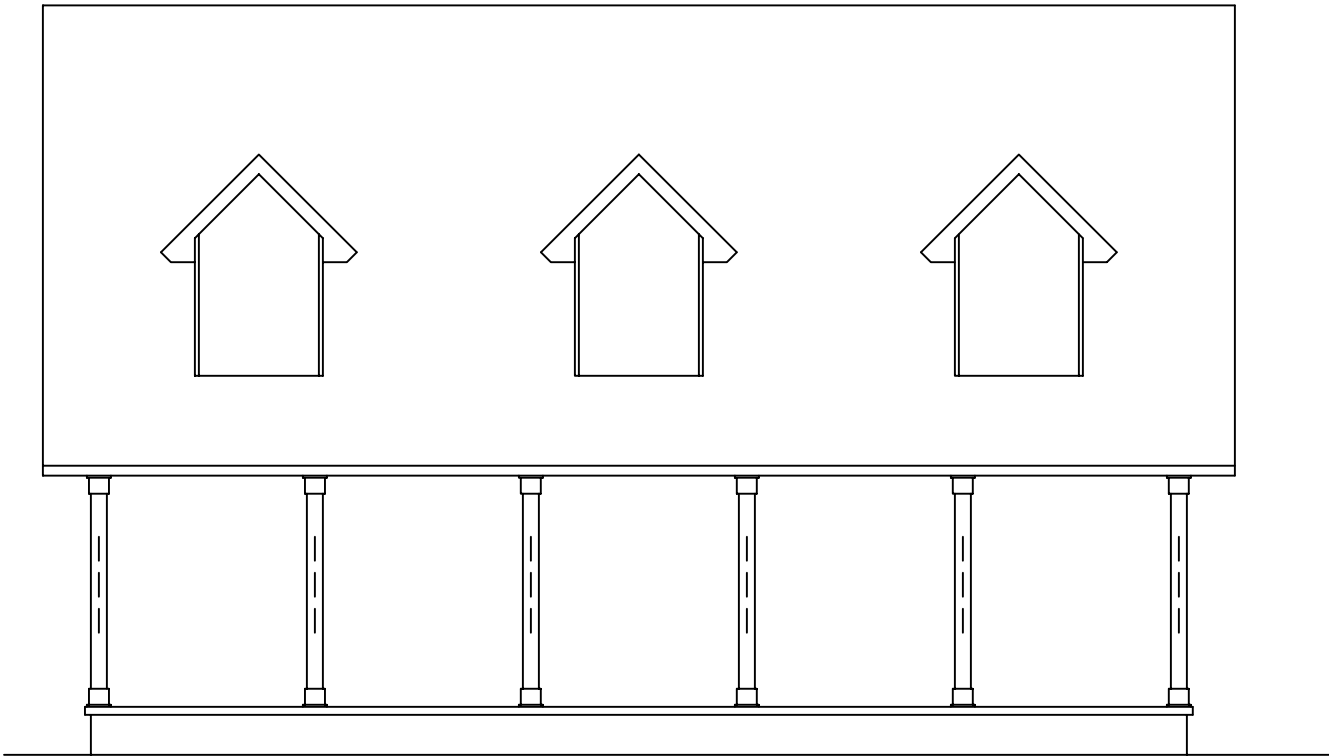
Kennesaw IV



Scale: 1/8" = 1'

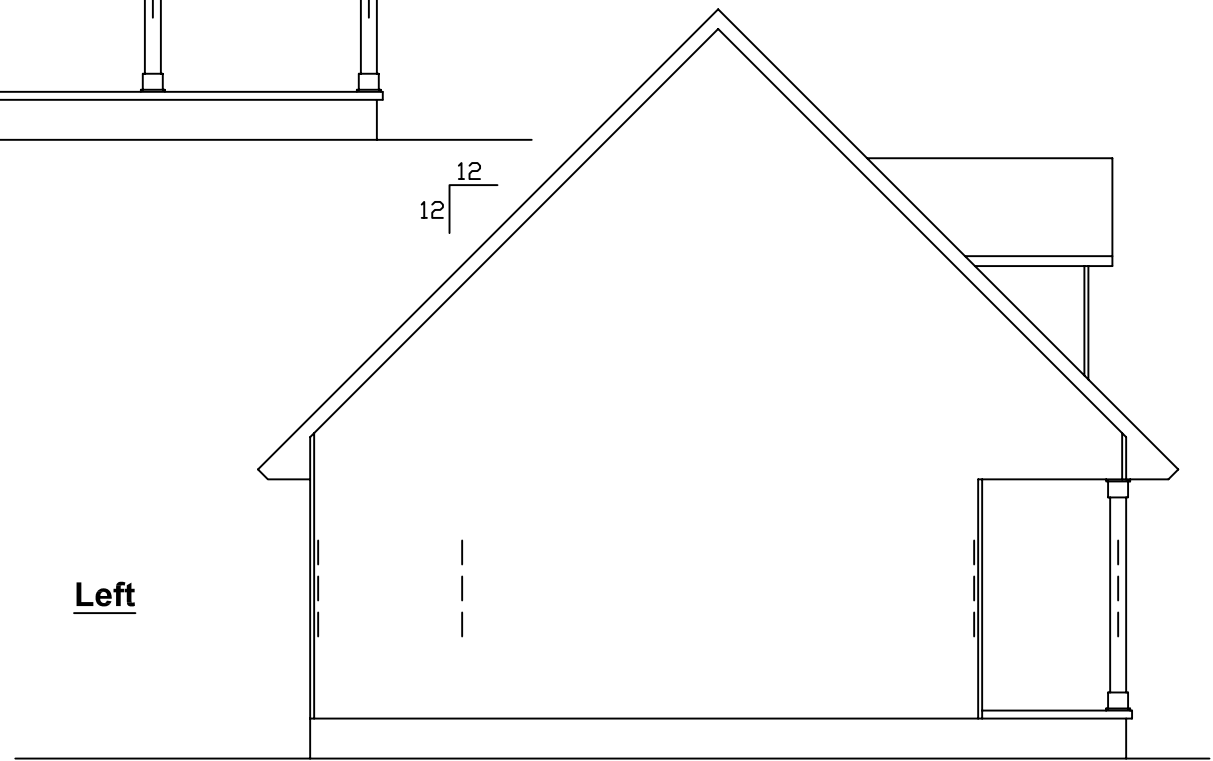


EXCALIBUR
STEEL STRUCTURES
ExcaliburSteel.com
423-624-1047



Front

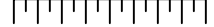
12
12



Left

Kennesaw IV

0 1 2 3 4 5 6 7 8



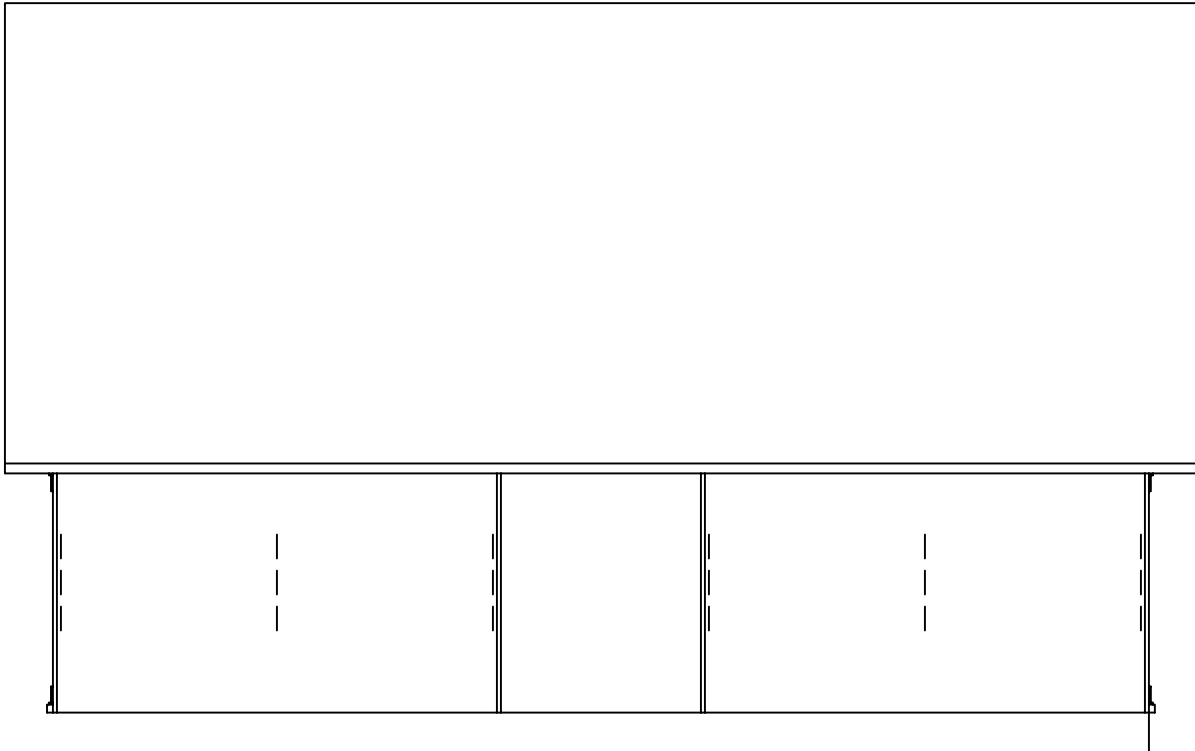
Scale: 1/8" = 1'



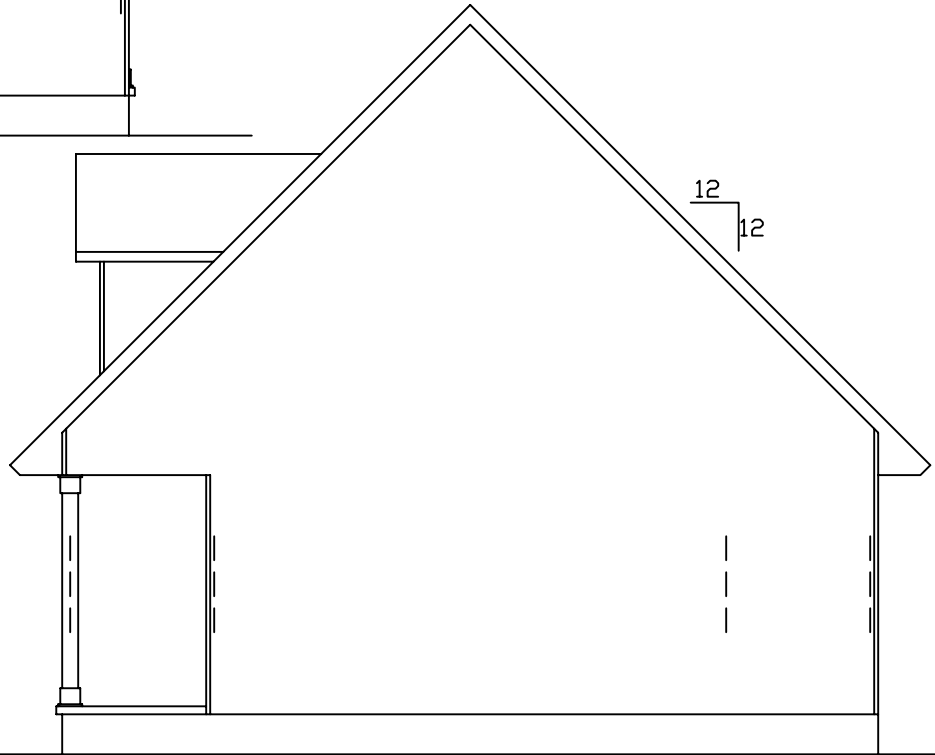
= COLUMN IN WALL



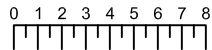
EXCALIBUR
STEEL STRUCTURES
ExcaliburSteel.com
423-624-1047



Rear



Right



Scale: 1/8" = 1'



= COLUMN IN WALL

Kennesaw IV



EXCALIBUR
STEEL STRUCTURES
ExcaliburSteel.com
423-624-1047