



[← BACK](#) [CONTENTS](#) [NEXT →](#)

## Kennesaw III



Copyright© 2000 Excalibur Steel Structures of Tennessee, LLC.

### Specifications\*

Living Area, 1st Floor:	1,032 s.f.	Dimensions (Overall):	45'-8" x 34'-0"
Living Area, 2nd Floor:	913 s.f.	Roof Pitch:	12/12
Utility:	85 s.f.	Ceiling Height, 1st Flr.:	9'
Garage:	n/a	Ceiling Height, 2nd Flr.:	8'
Porch, Front:	289 s.f.	Bedrooms:	3
Porch, Rear:	170 s.f.	Baths:	3
<b>Total Area:</b>	<b>2,489 s.f.</b>	Fireplace:	n/a
Basement (optional):	1,117 s.f.	Standard Model Price:	<a href="#">Price List</a>



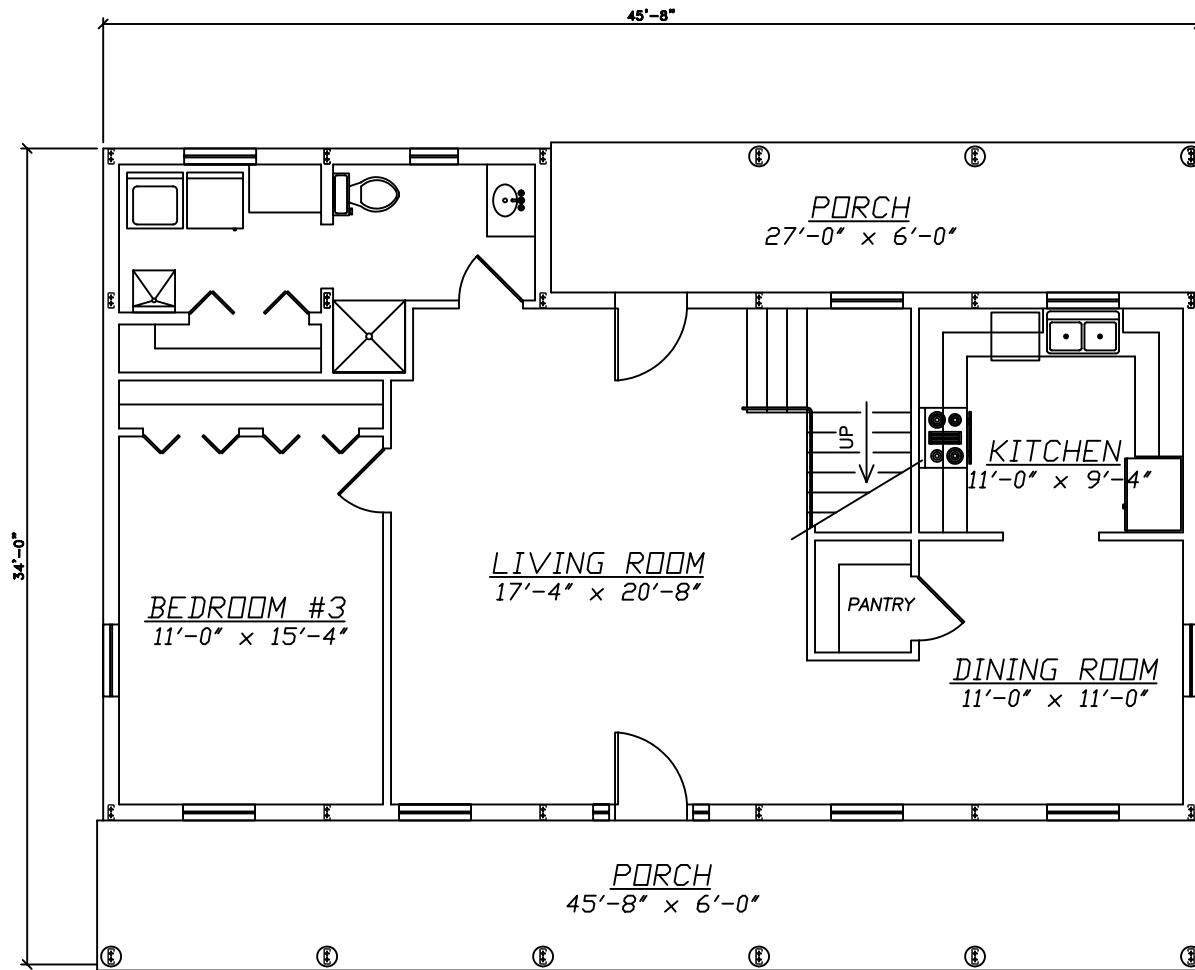
[Help/info](#)

<a href="#">Front/ Left Elevation</a>	<a href="#">Rear/ Right Elevation</a>
<a href="#">1st Floor Plan</a>	<a href="#">2nd Floor Plan</a>

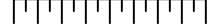
\*Values are approximate



[RETURN TO HOME PAGE](#)



0 1 2 3 4 5 6 7 8

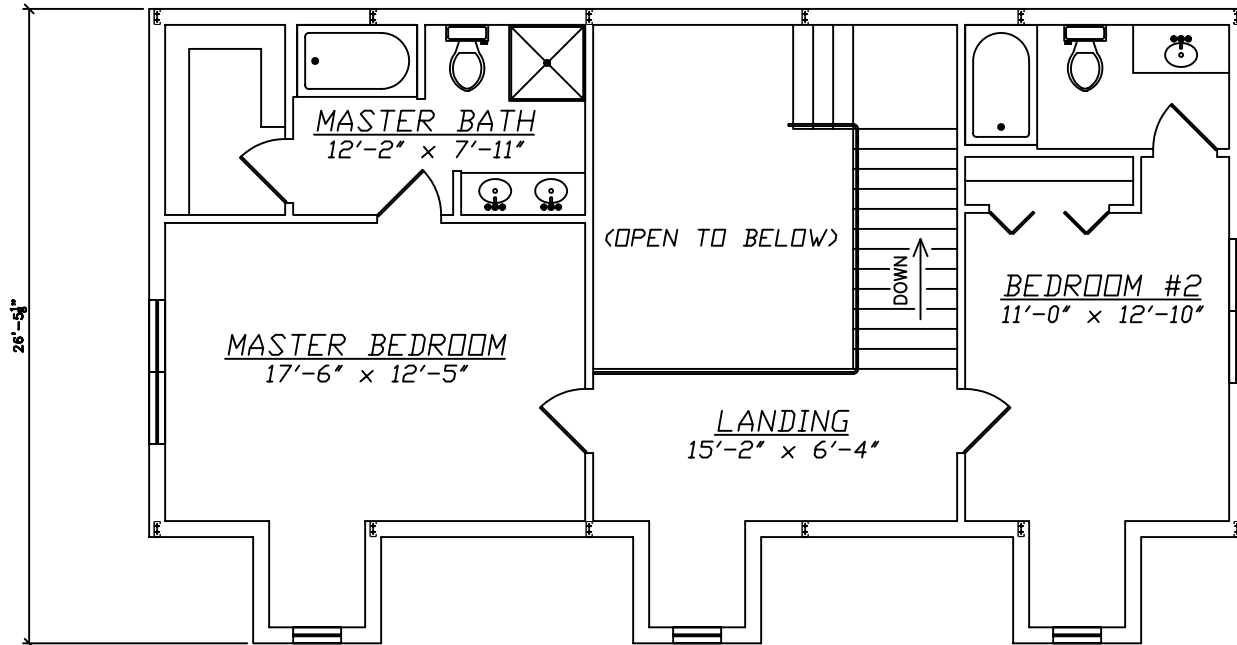


Scale: 1/8" = 1'

**Kennesaw III**

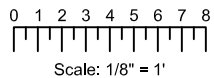


EXCALIBUR  
STEEL STRUCTURES  
ExcaliburSteel.com  
423-624-1047



**2nd Floor**

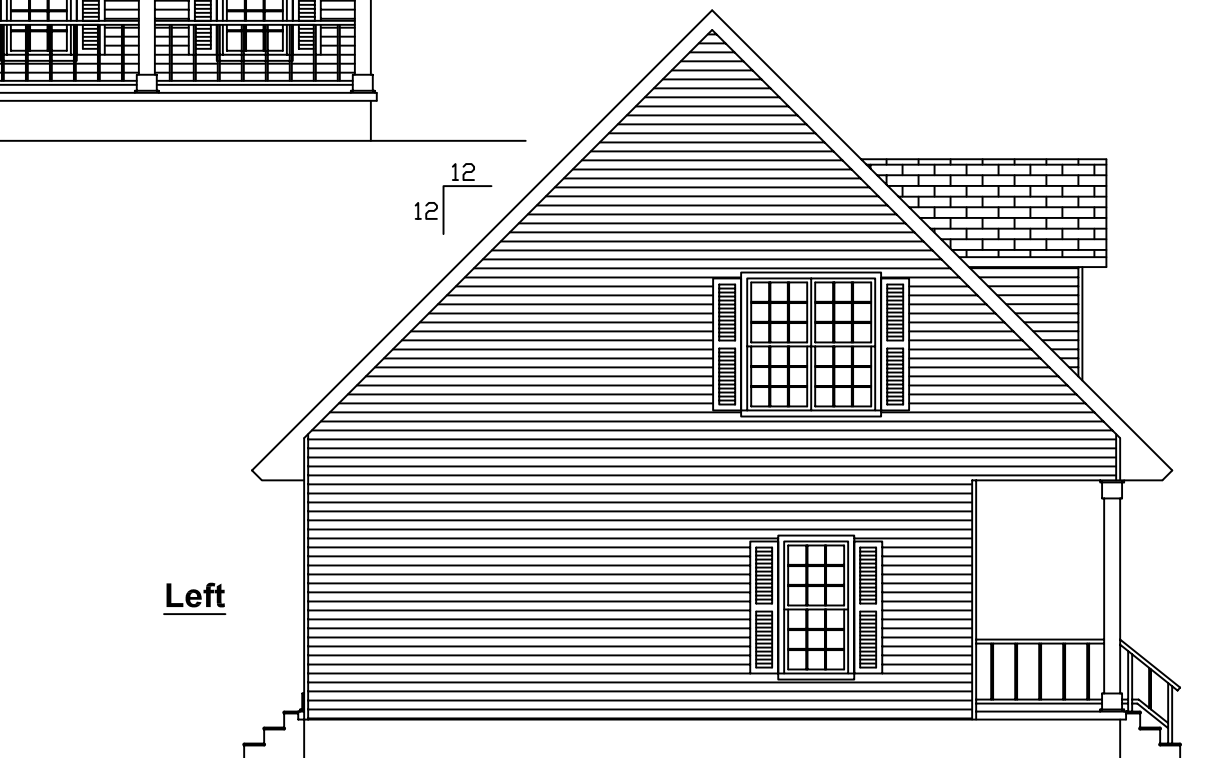
**Kennesaw III**



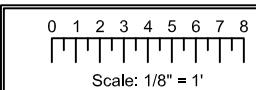


**Front**

12  
12



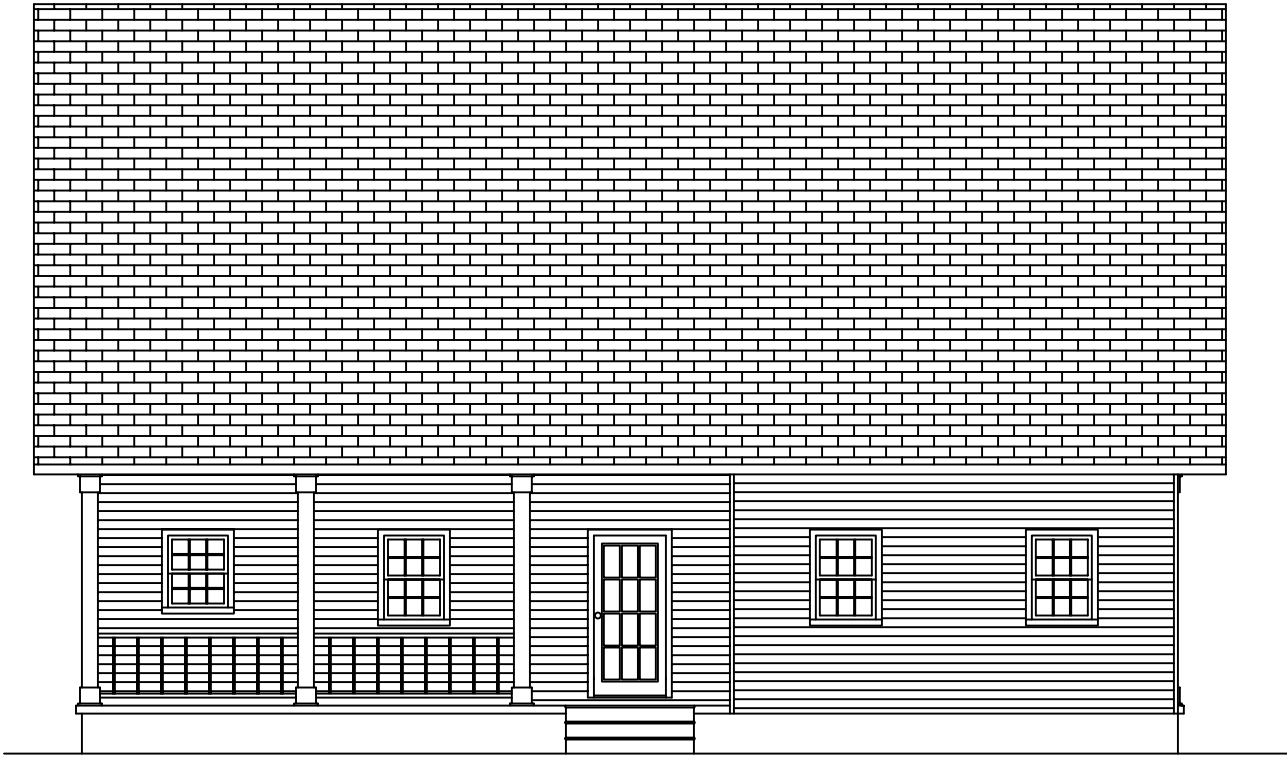
**Left**



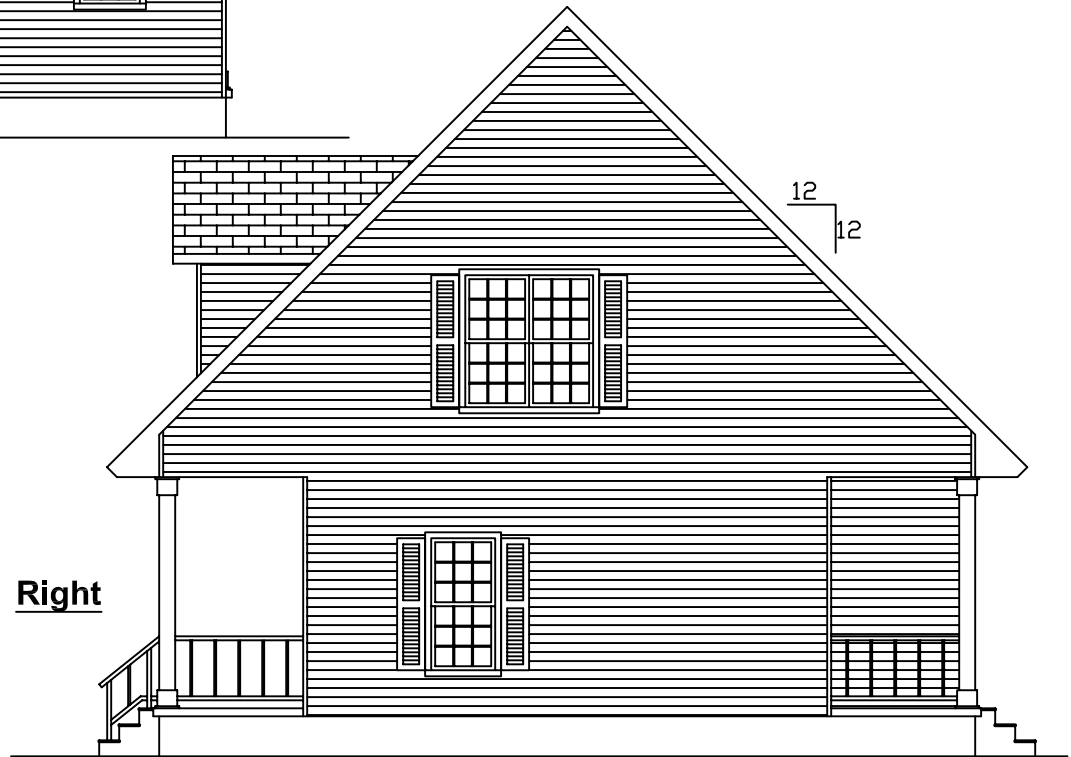
= COLUMN IN WALL

**Kennesaw III**

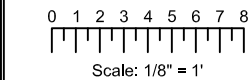
EXCALIBUR  
STEEL STRUCTURES  
ExcaliburSteel.com  
423-624-1047



**Rear**

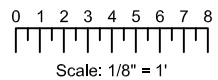
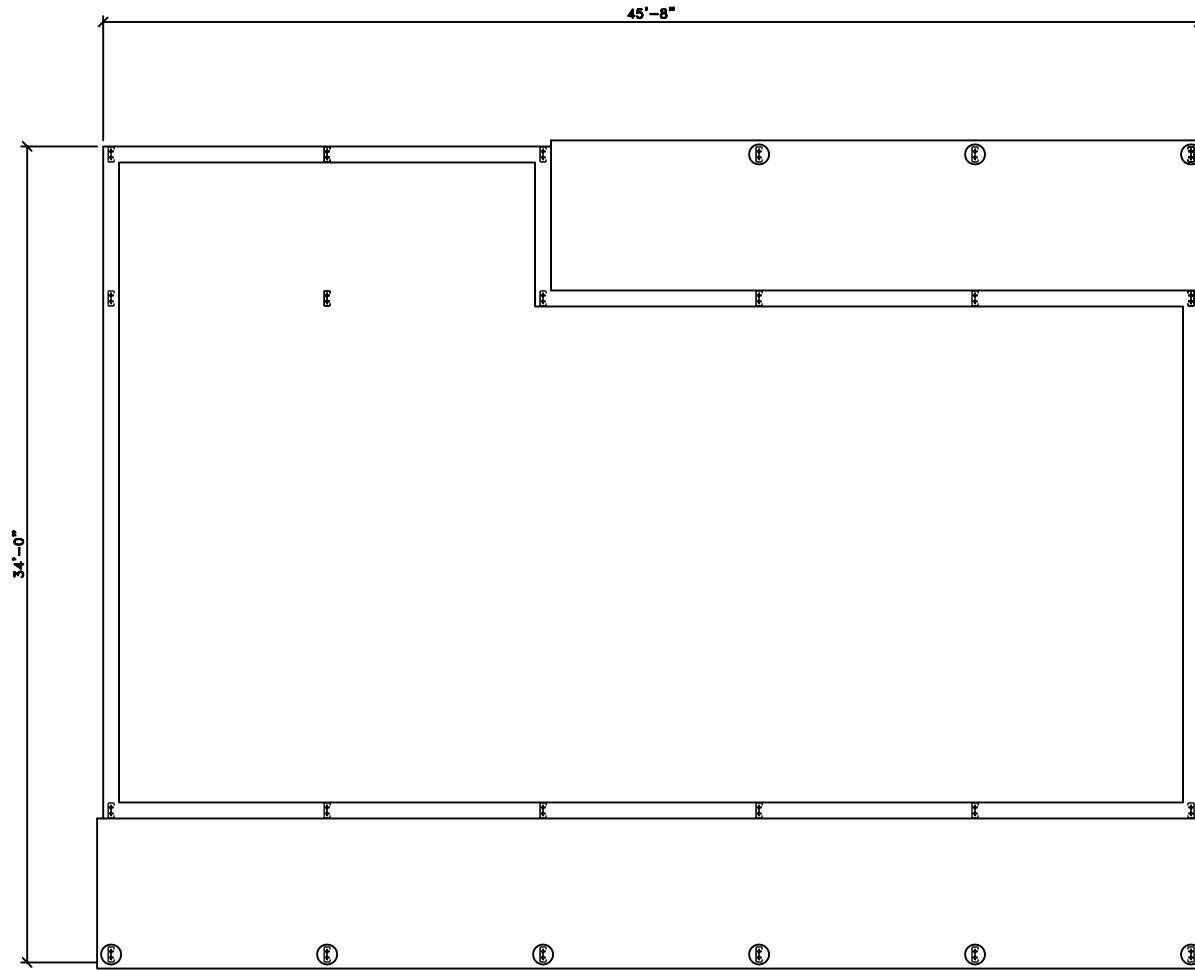


**Right**



 = COLUMN IN WALL

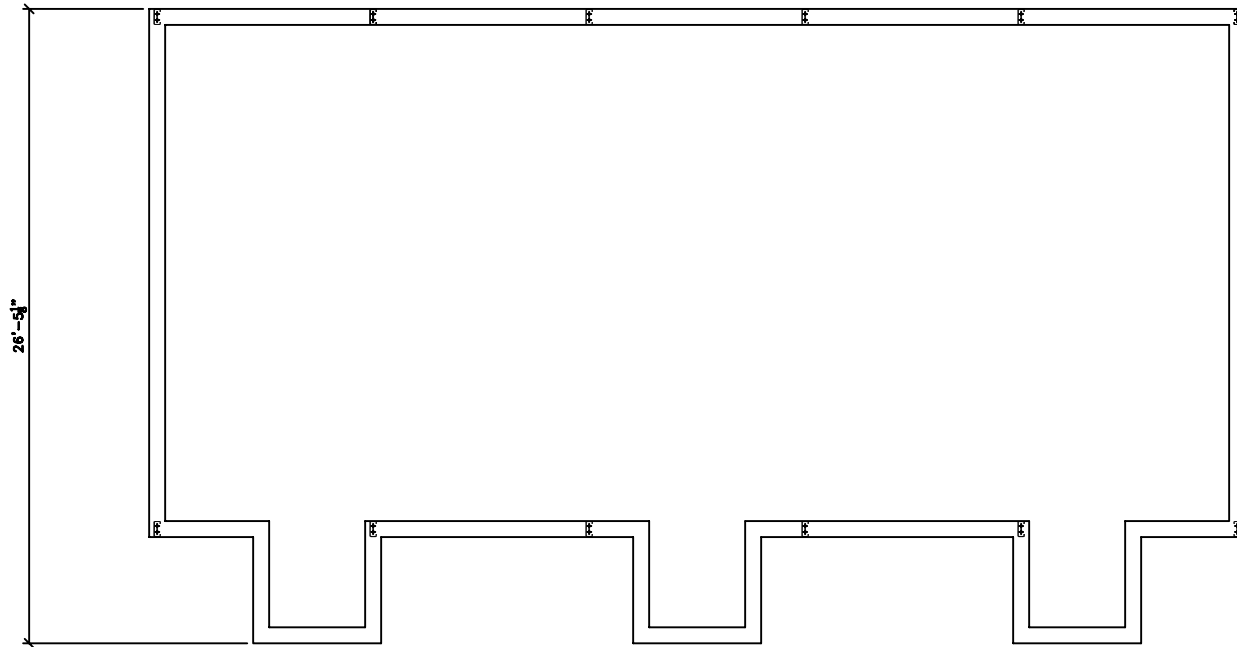
**Kennesaw III**



**Kennesaw III**

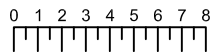


EXCALIBUR  
 STEEL STRUCTURES  
 ExcaliburSteel.com  
 423-624-1047



**2nd Floor**

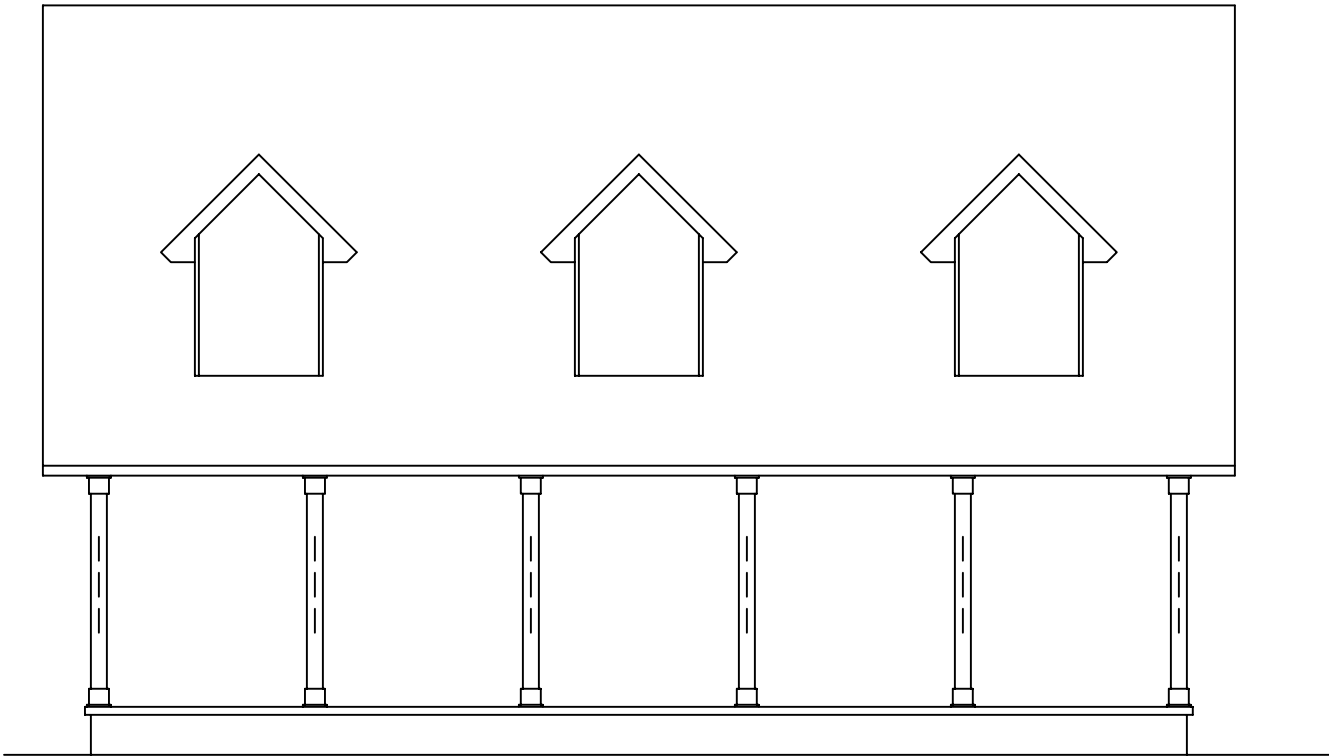
**Kennesaw III**



Scale: 1/8" = 1'

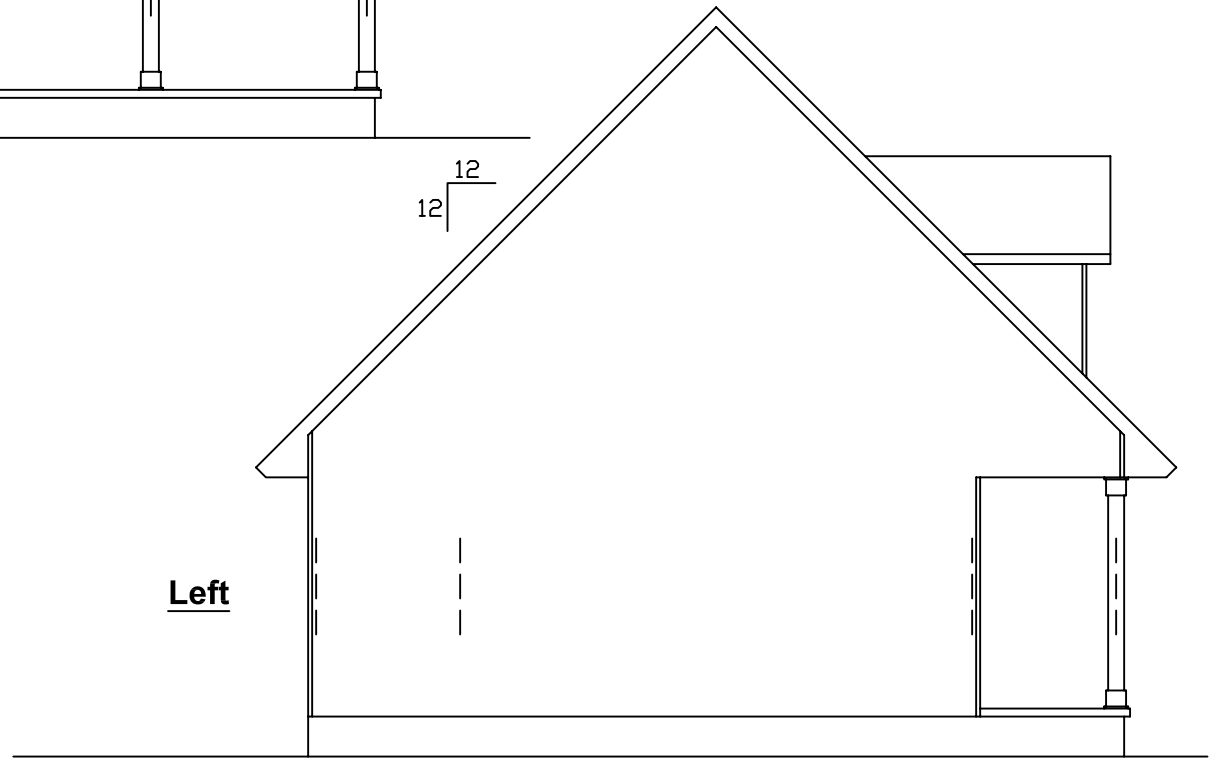


EXCALIBUR  
STEEL STRUCTURES  
ExcaliburSteel.com  
423-624-1047



**Front**

12  
12



**Left**

**Kennesaw III**

0 1 2 3 4 5 6 7 8



Scale: 1/8" = 1'



= COLUMN IN WALL



EXCALIBUR  
STEEL STRUCTURES  
ExcaliburSteel.com  
423-624-1047

Rear

Right

 = COLUMN IN WALL

