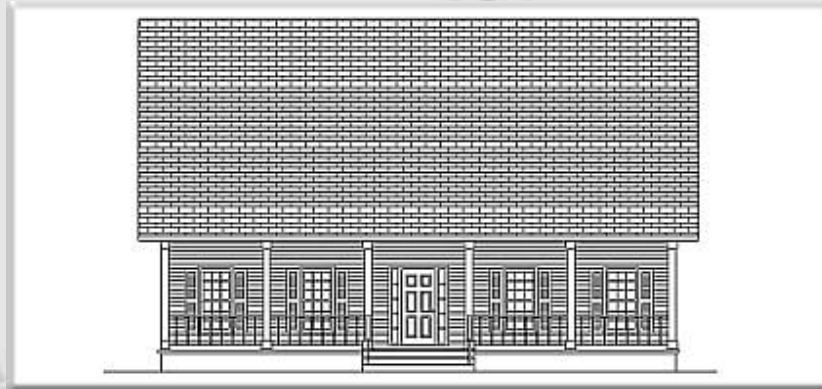




[← BACK](#) [CONTENTS](#) [NEXT →](#)

Kennesaw II



Copyright© 2000 Excalibur Steel Structures of Tennessee, LLC.

Specifications*

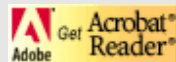
Living Area, 1st Floor:	1,077 s.f.	Dimensions (Overall):	45'-8" x 34'-0"
Living Area, 2nd Floor:	860 s.f.	Roof Pitch:	12/12
Utility:	40 s.f.	Ceiling Height, 1st Flr.:	9'
Garage:	n/a	Ceiling Height, 2nd Flr.:	8'
Porch, Front:	289 s.f.	Bedrooms:	3
Porch, Rear:	170 s.f.	Baths:	3
Total Area:	2,436 s.f.	Fireplace:	n/a
Basement (optional):	1,117 s.f.	Standard Model Price:	Price List



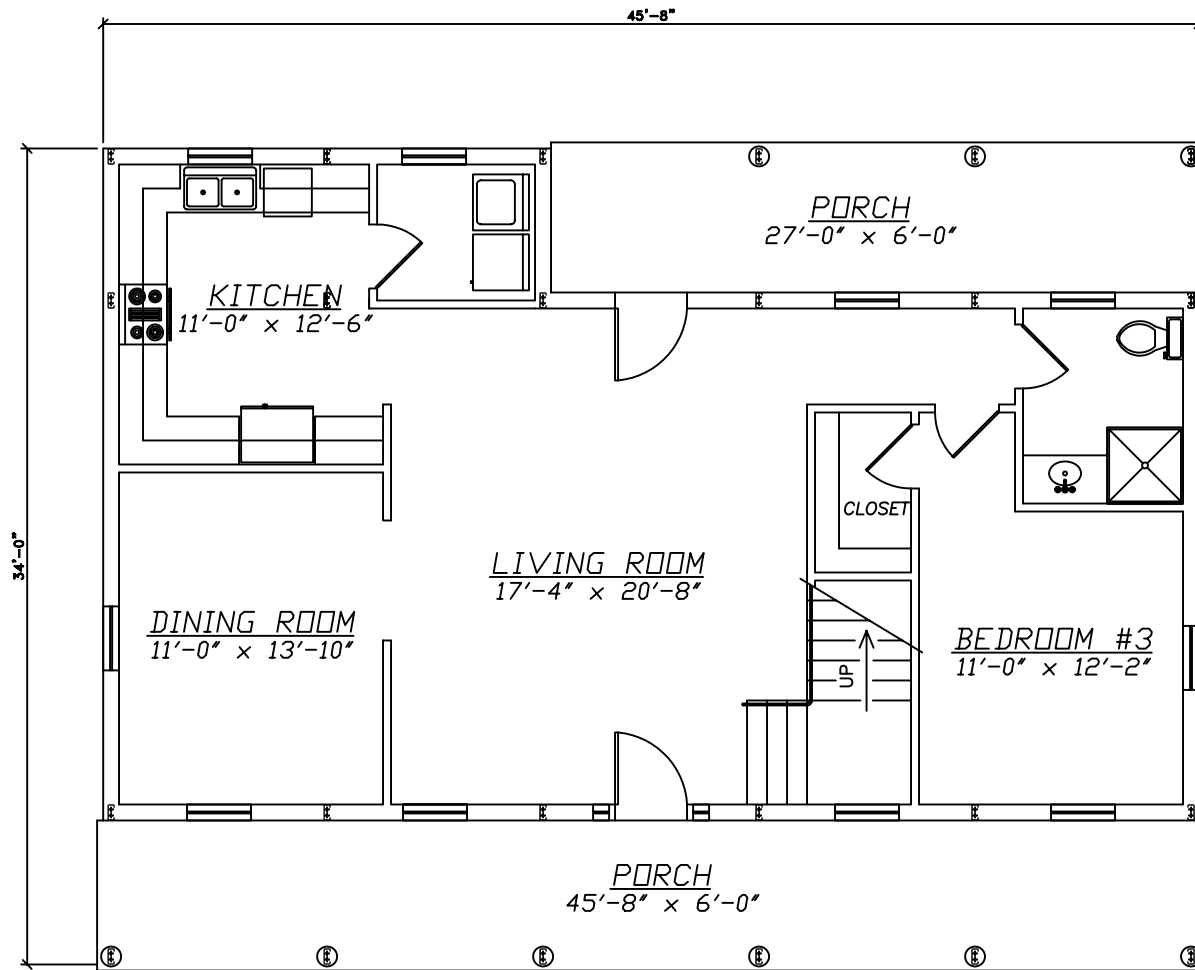
[Help/info](#)

Front/ Left Elevation	Rear/ Right Elevation
1st Floor Plan	2nd Floor Plan

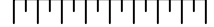
*Values are approximate



[RETURN TO HOME PAGE](#)



0 1 2 3 4 5 6 7 8

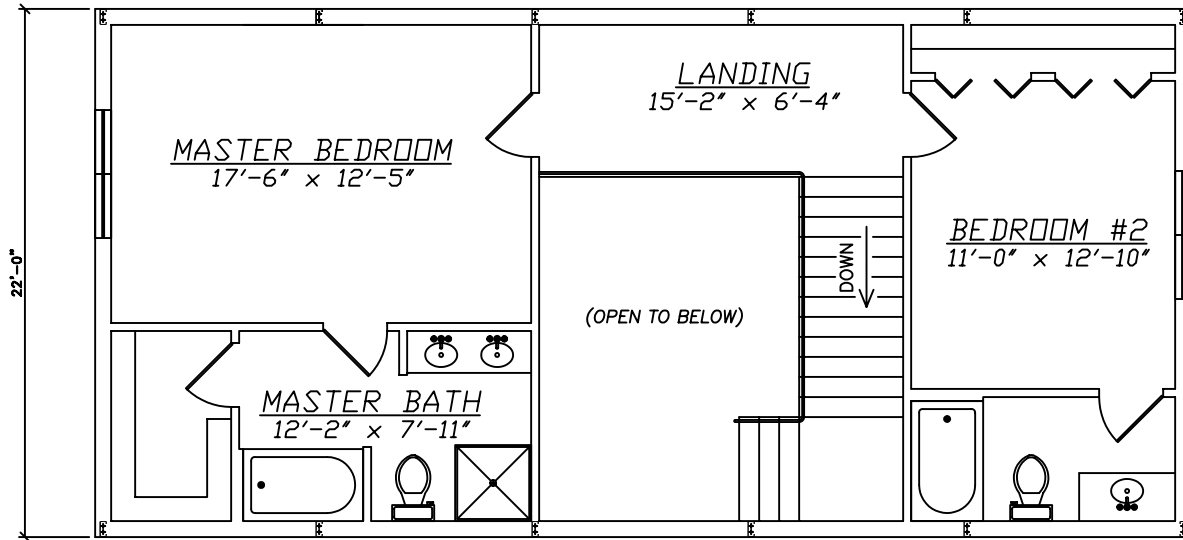


Scale: 1/8" = 1'

Kennesaw II

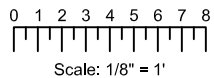


EXCALIBUR
STEEL STRUCTURES
ExcaliburSteel.com
423-624-1047

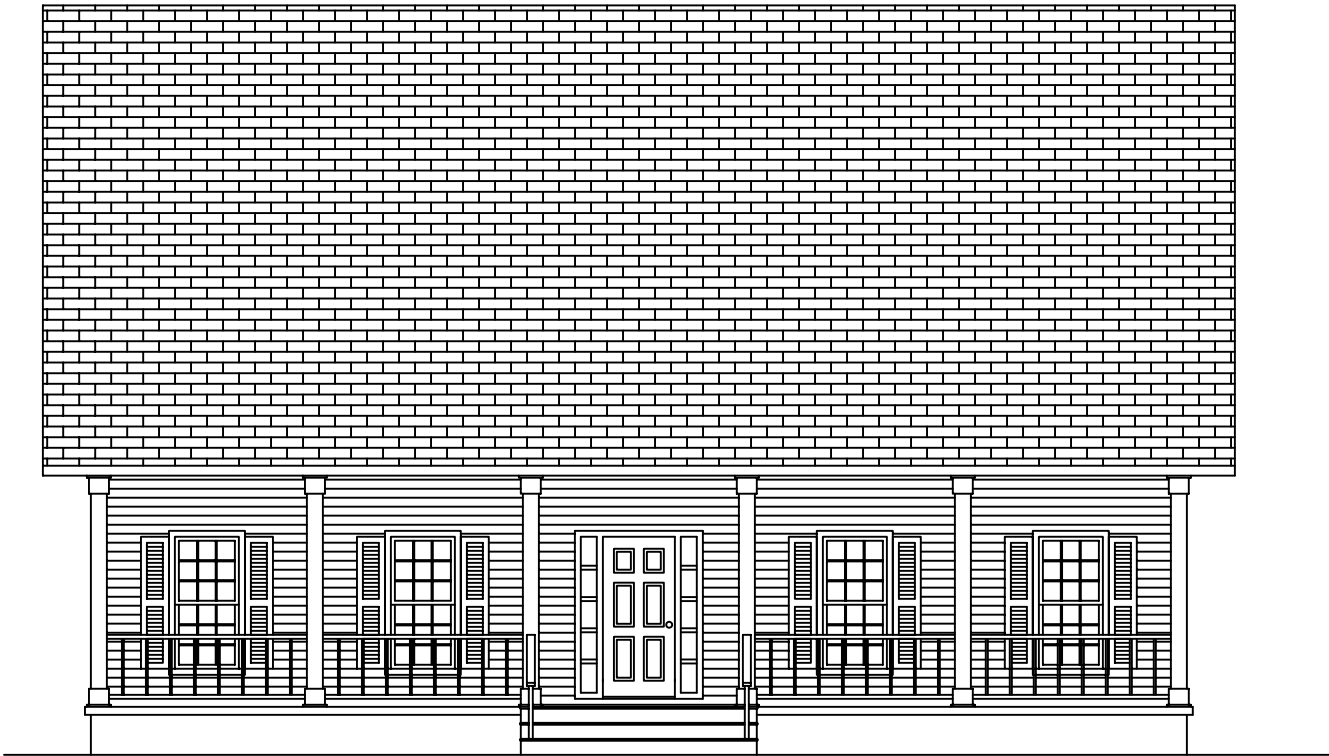


2nd Floor

Kennesaw II

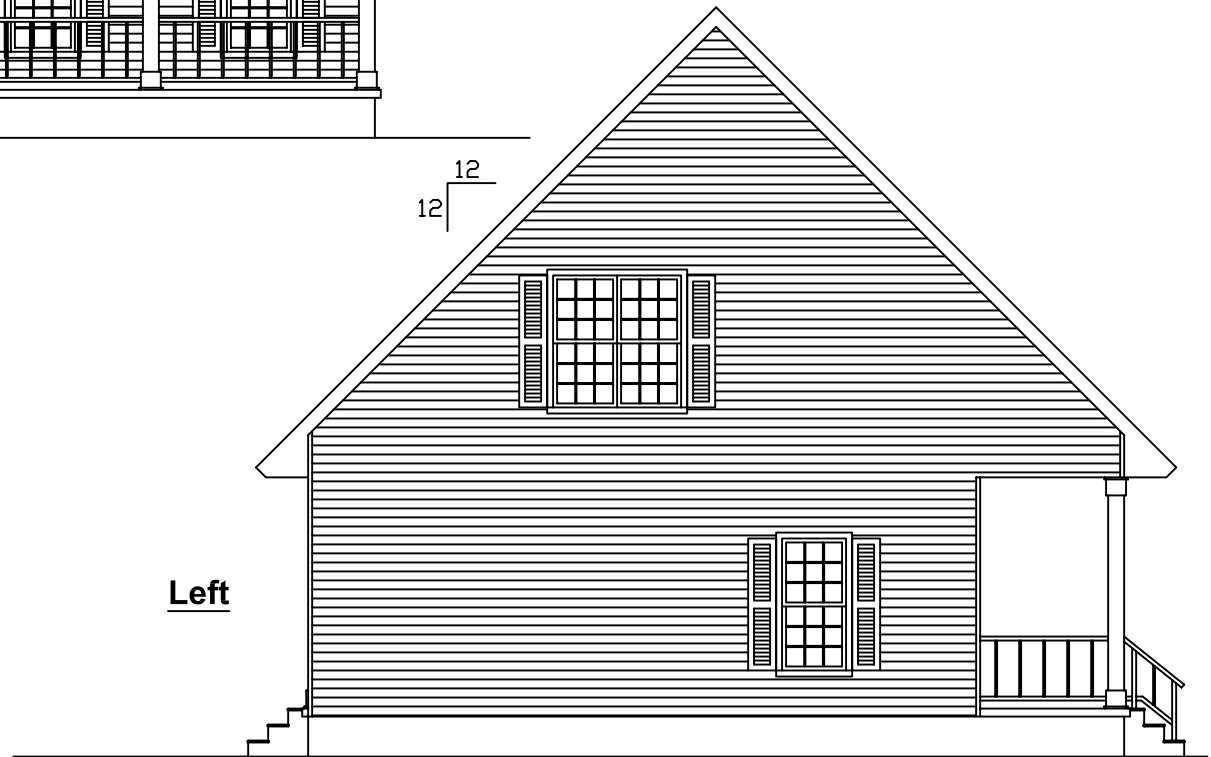


EXCALIBUR
 STEEL STRUCTURES
 ExcaliburSteel.com
 423-624-1047



Front

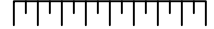
12
12



Left

Kennesaw II

0 1 2 3 4 5 6 7 8



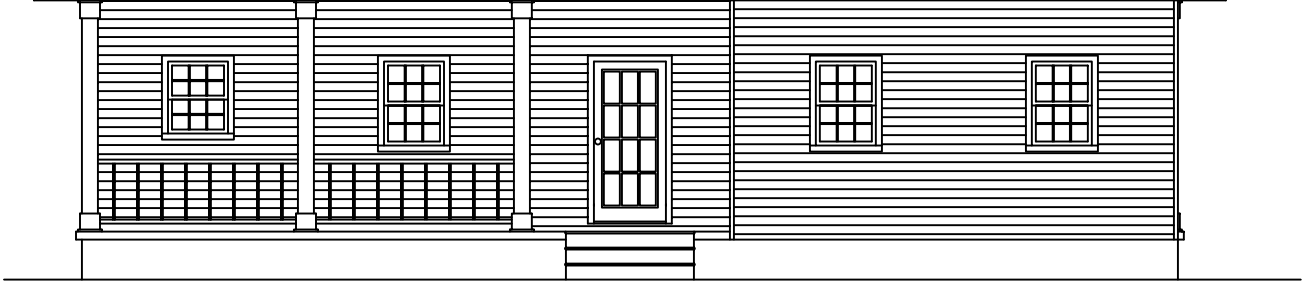
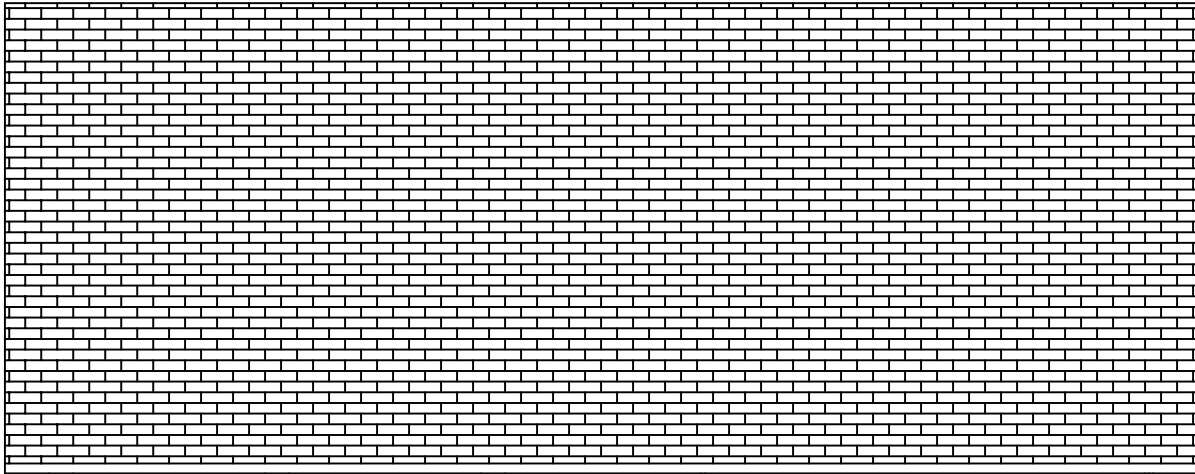
Scale: 1/8" = 1'



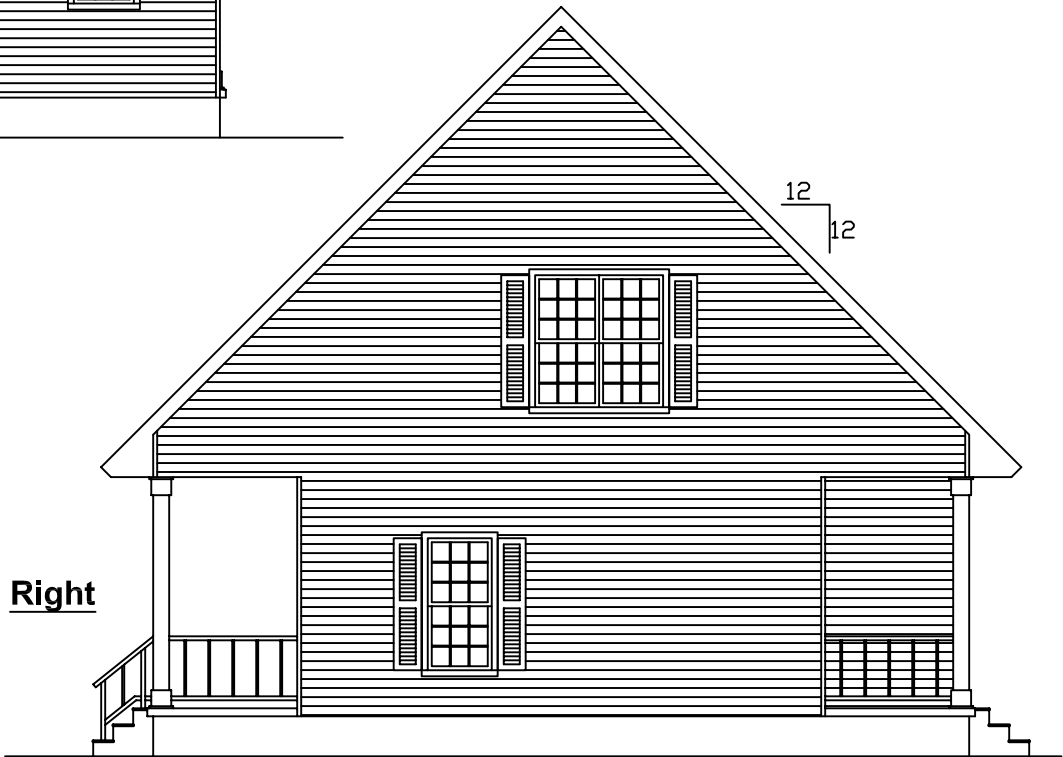
= COLUMN IN WALL



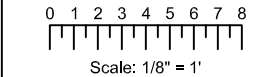
EXCALIBUR
STEEL STRUCTURES
ExcaliburSteel.com
423-624-1047



Rear



Right



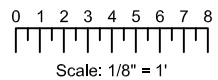
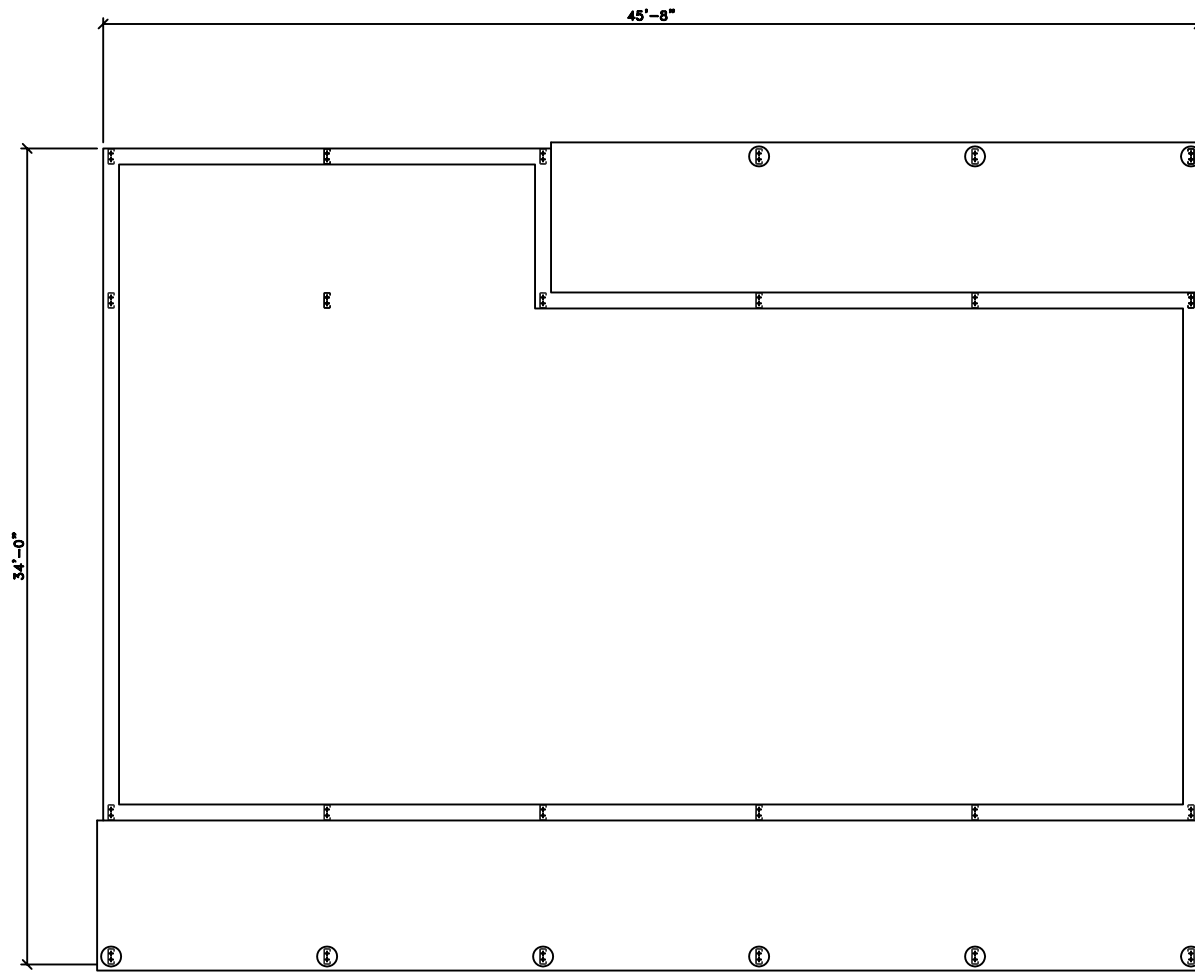
Scale: 1/8" = 1'

 = COLUMN IN WALL

Kennesaw II



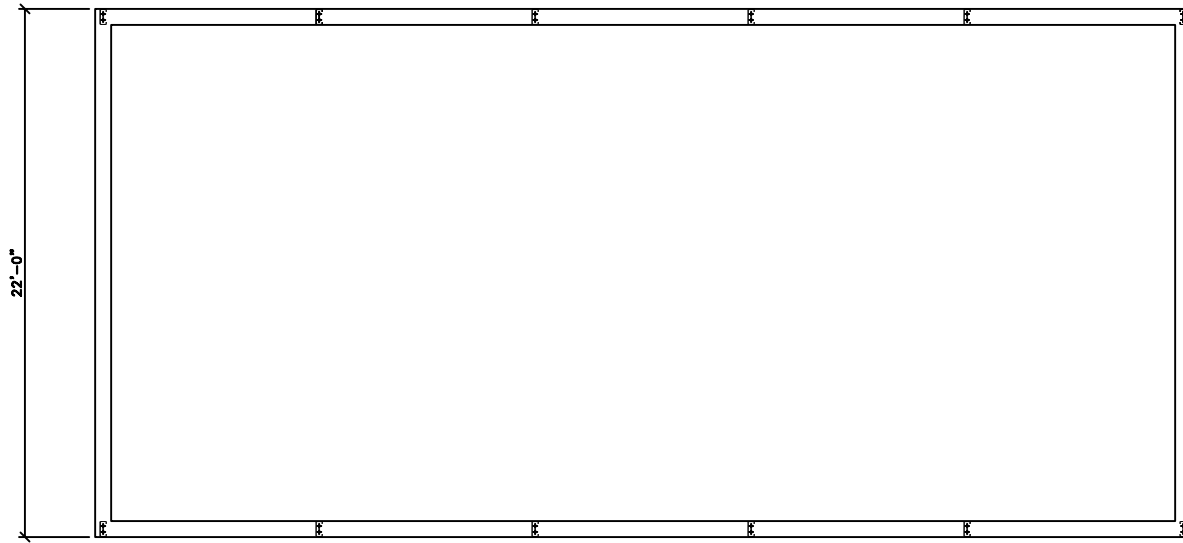
EXCALIBUR
STEEL STRUCTURES
ExcaliburSteel.com
423-624-1047



Kennesaw II

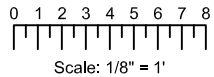


EXCALIBUR
 STEEL STRUCTURES
 ExcaliburSteel.com
 423-624-1047

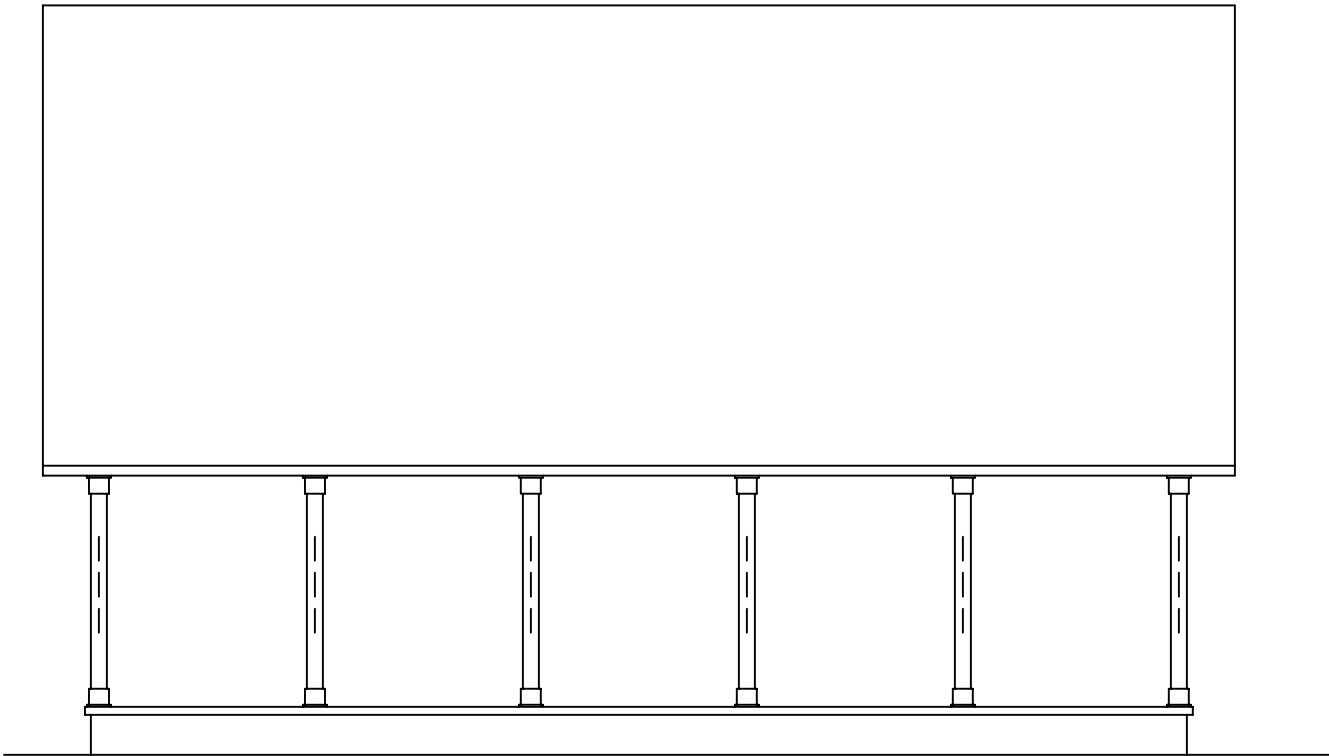


2nd Floor

Kennesaw II

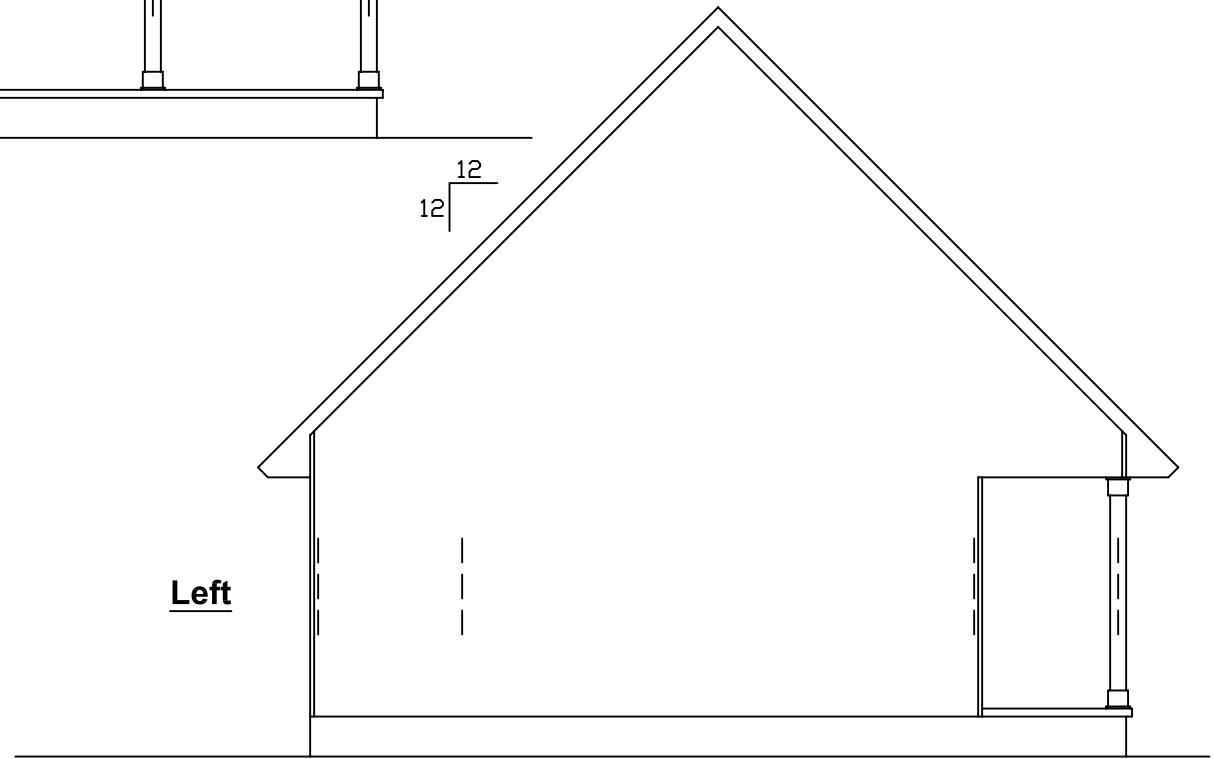


EXCALIBUR
STEEL STRUCTURES
ExcaliburSteel.com
423-624-1047



Front

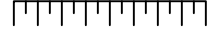
12
12



Left

Kennesaw II

0 1 2 3 4 5 6 7 8



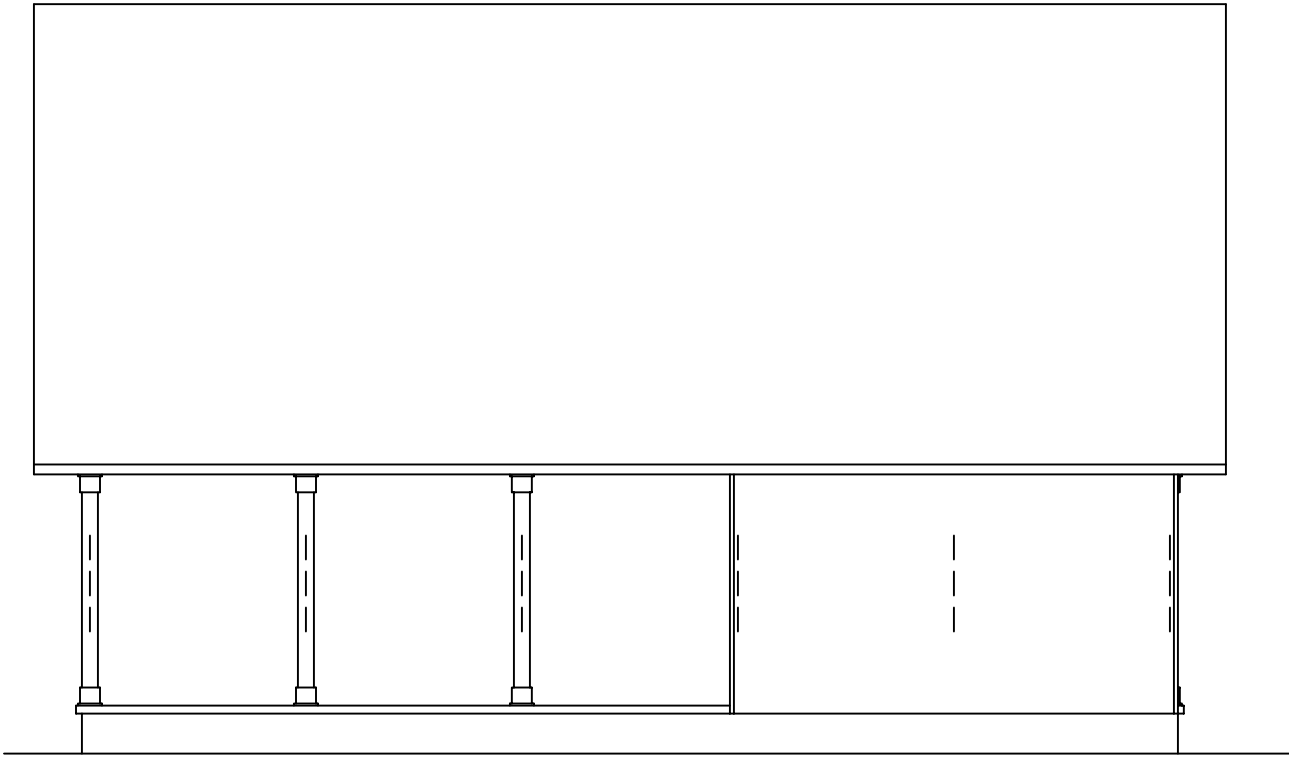
Scale: 1/8" = 1'



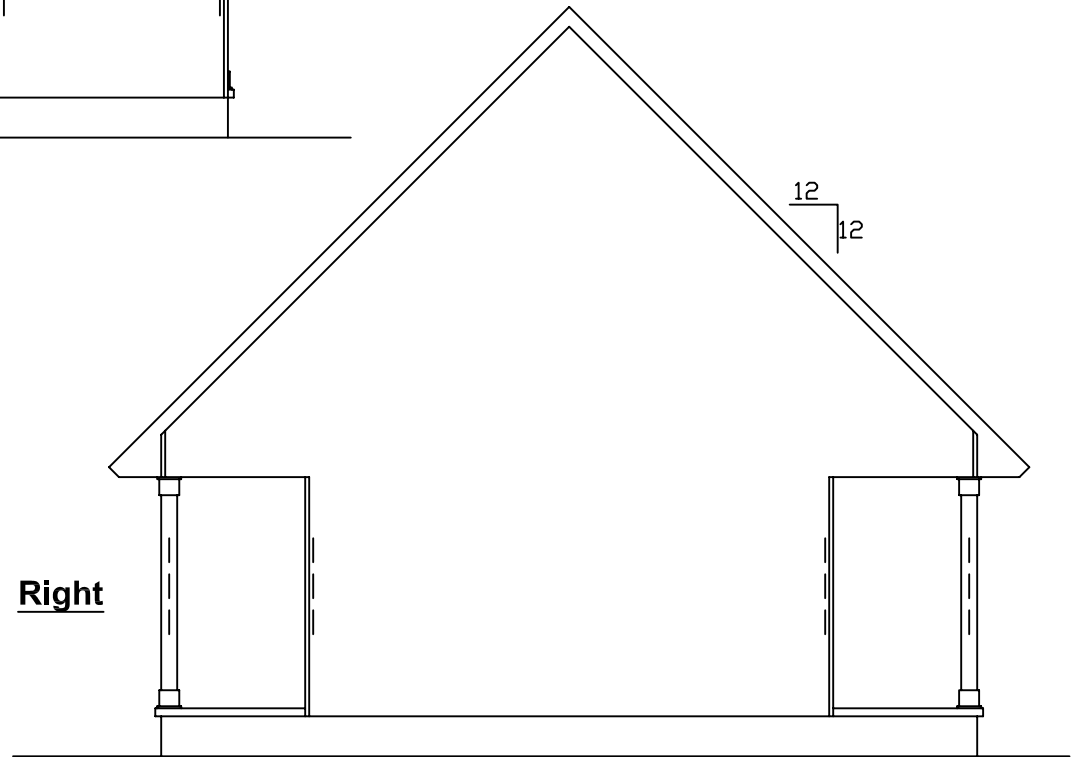
= COLUMN IN WALL



EXCALIBUR
STEEL STRUCTURES
ExcaliburSteel.com
423-624-1047



Rear



Right

<p>0 1 2 3 4 5 6 7 8</p> <p>Scale: 1/8" = 1'</p>	<p>= COLUMN IN WALL</p>	<p><u>Kennesaw II</u></p>	<p>EXCALIBUR STEEL STRUCTURES ExcaliburSteel.com 423-624-1047</p>
--	-------------------------	----------------------------------	---