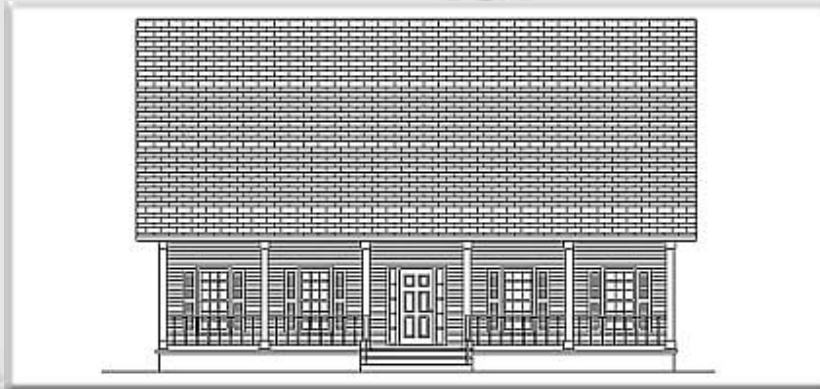




[← BACK](#) [CONTENTS](#) [NEXT →](#)

Kennesaw I



Copyright© 2000 Excalibur Steel Structures of Tennessee, LLC.

Specifications*

Living Area, 1st Floor:	1,032 s.f.	Dimensions (Overall):	45'-8" x 34'-0"
Living Area, 2nd Floor:	860 s.f.	Roof Pitch:	12/12
Utility:	85 s.f.	Ceiling Height, 1st Flr.:	9'
Garage:	n/a	Ceiling Height, 2nd Flr.:	8'
Porch, Front:	289 s.f.	Bedrooms:	3
Porch, Rear:	170 s.f.	Baths:	3
Total Area:	2,436 s.f.	Fireplace:	n/a
Basement (optional):	1,117 s.f.	Standard Model Price:	Price List



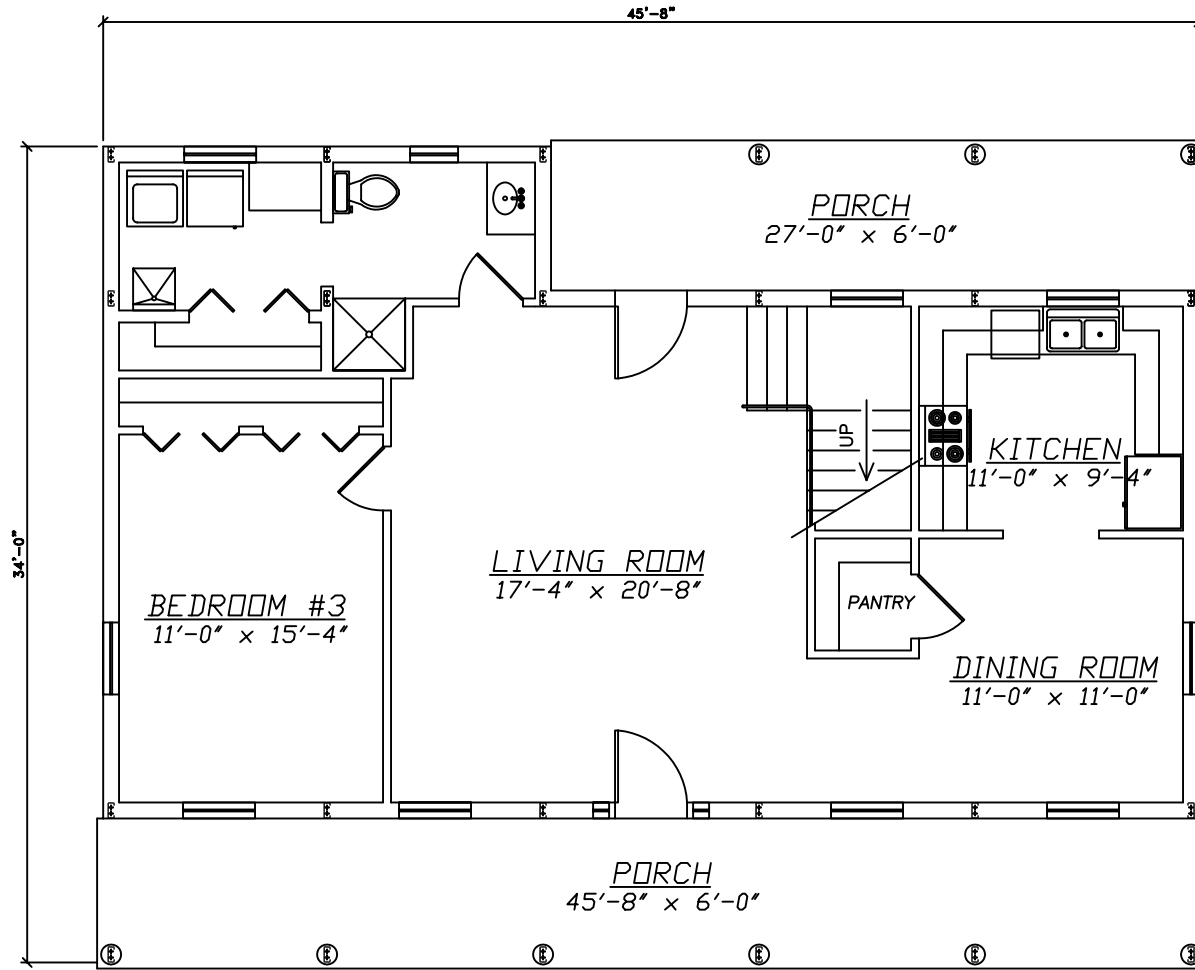
[Help/info](#)

Front/ Left Elevation	Rear/ Right Elevation
1st Floor Plan	2nd Floor Plan

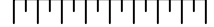
*Values are approximate



[RETURN TO HOME PAGE](#)



0 1 2 3 4 5 6 7 8

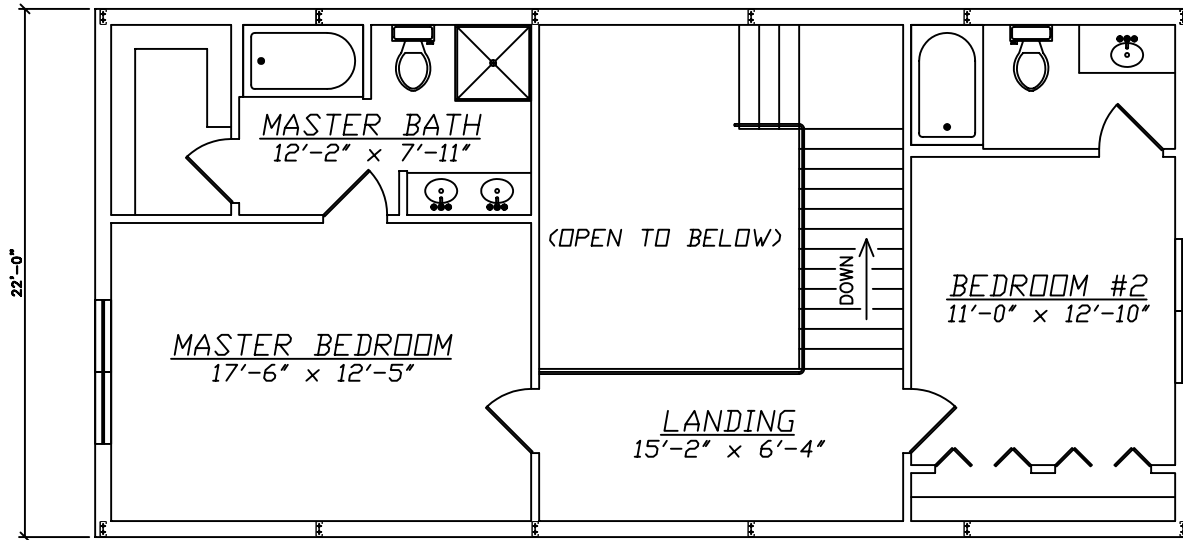


Scale: 1/8" = 1'

Kennesaw I

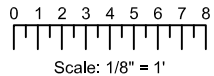


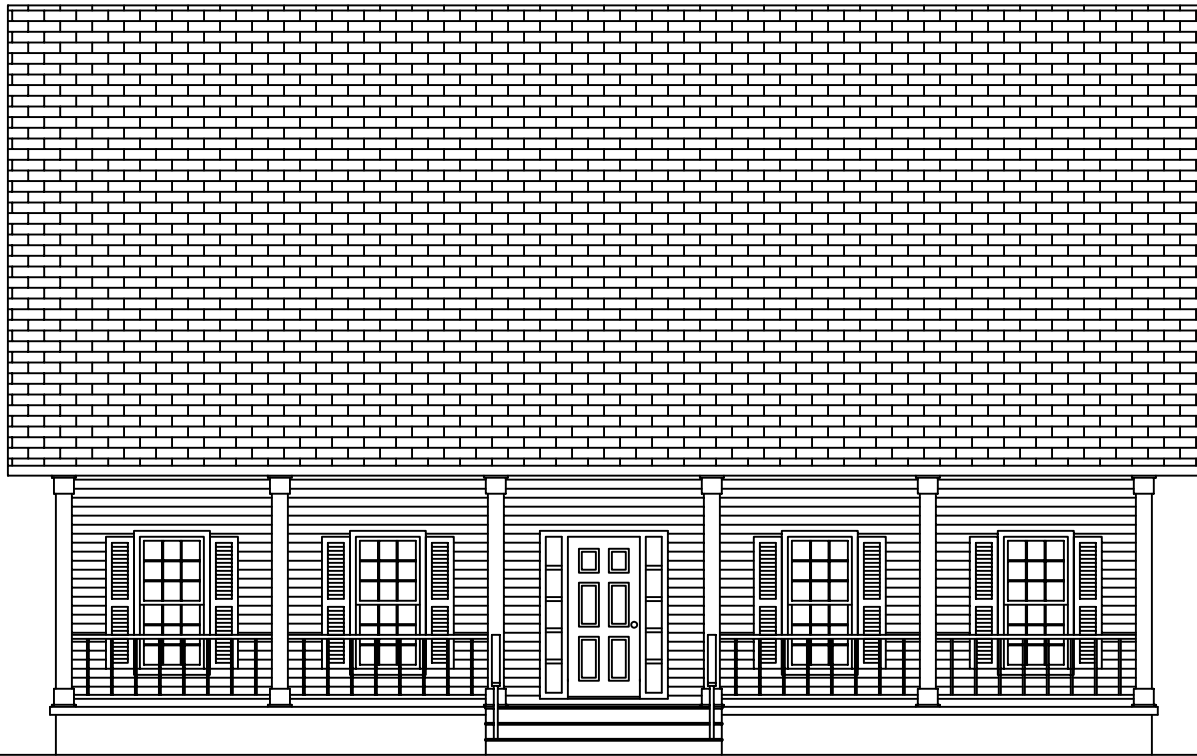
EXCALIBUR
STEEL STRUCTURES
ExcaliburSteel.com
423-624-1047



2nd Floor

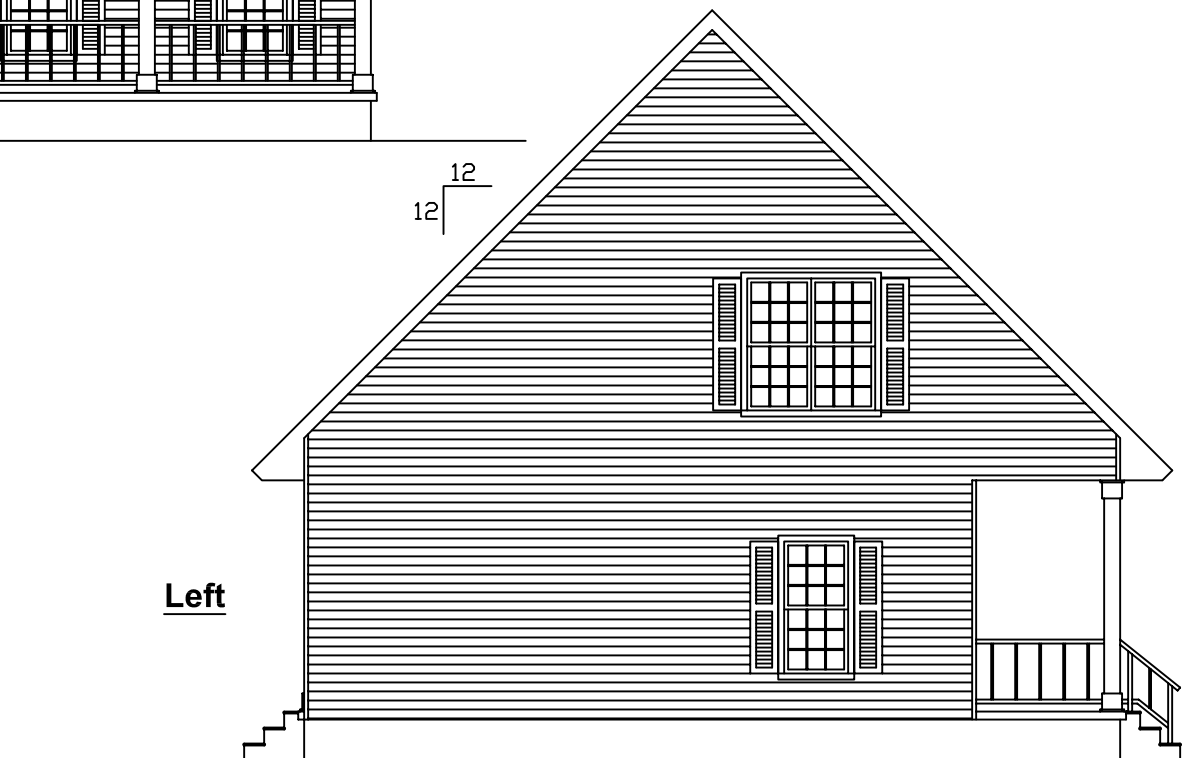
Kennesaw I



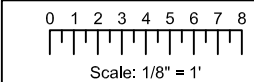


Front

12
12



Left

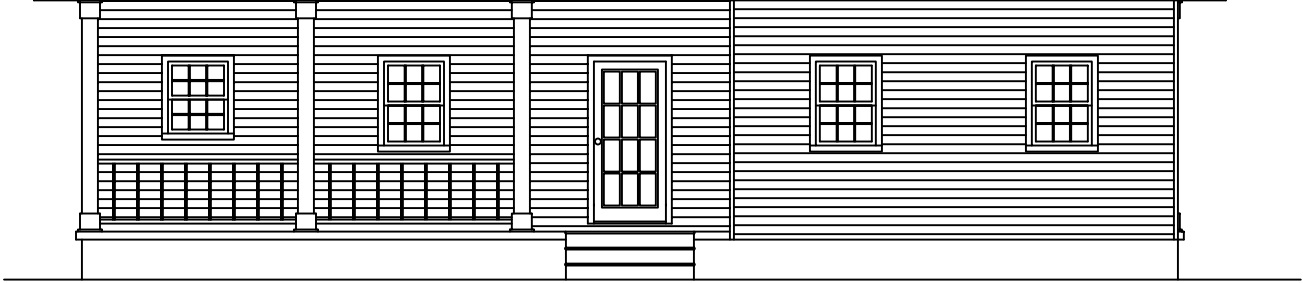
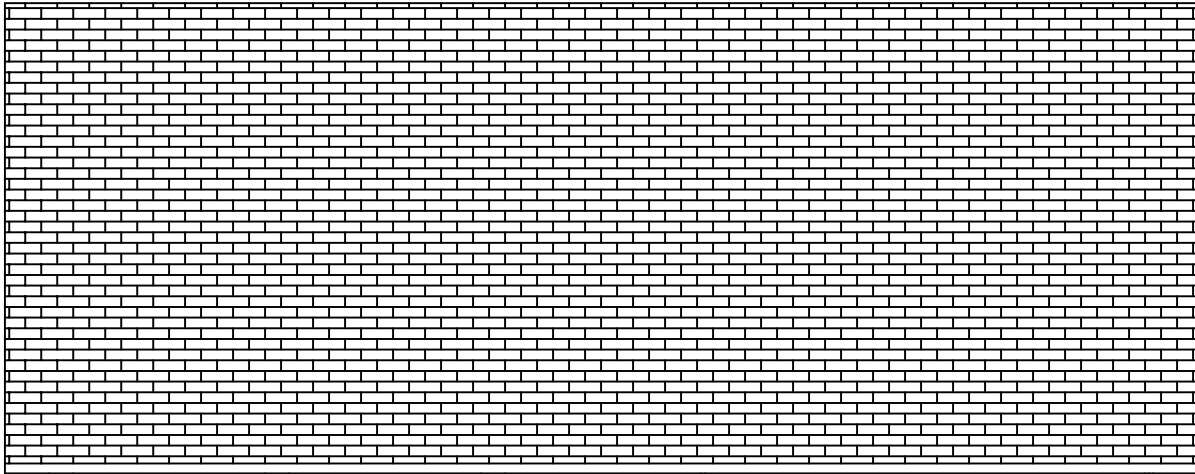


 = COLUMN IN WALL

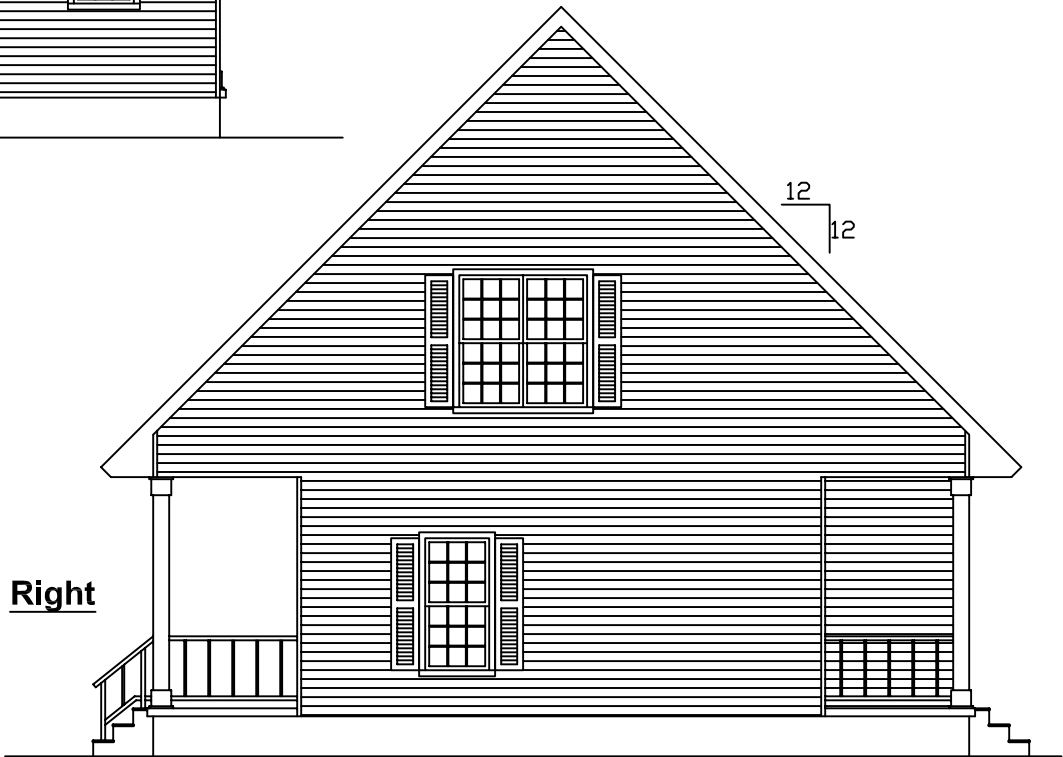
Kennesaw I



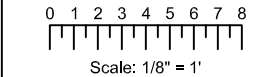
EXCALIBUR
STEEL STRUCTURES
ExcaliburSteel.com
423-624-1047



Rear



Right

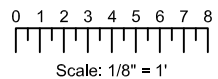
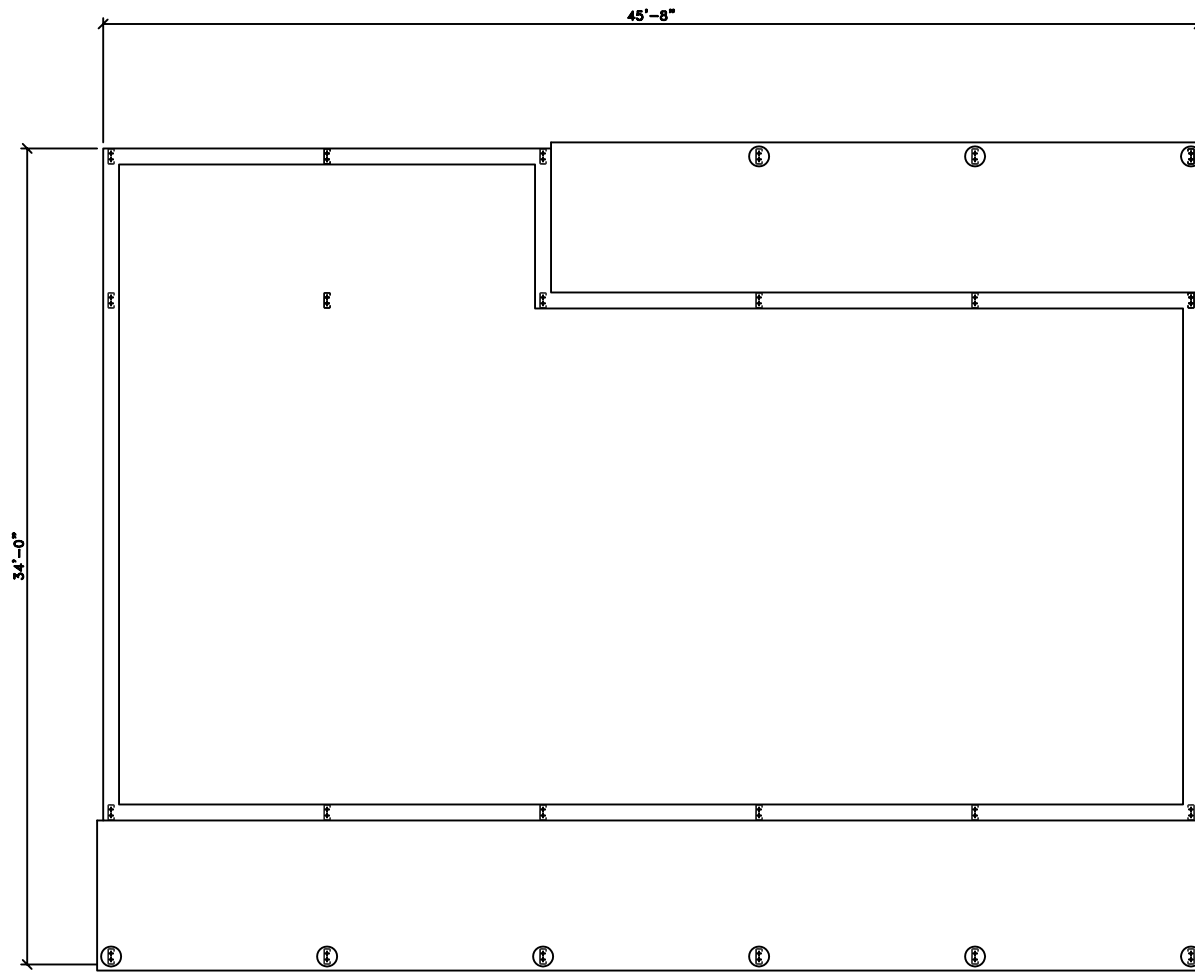


 = COLUMN IN WALL

Kennesaw I



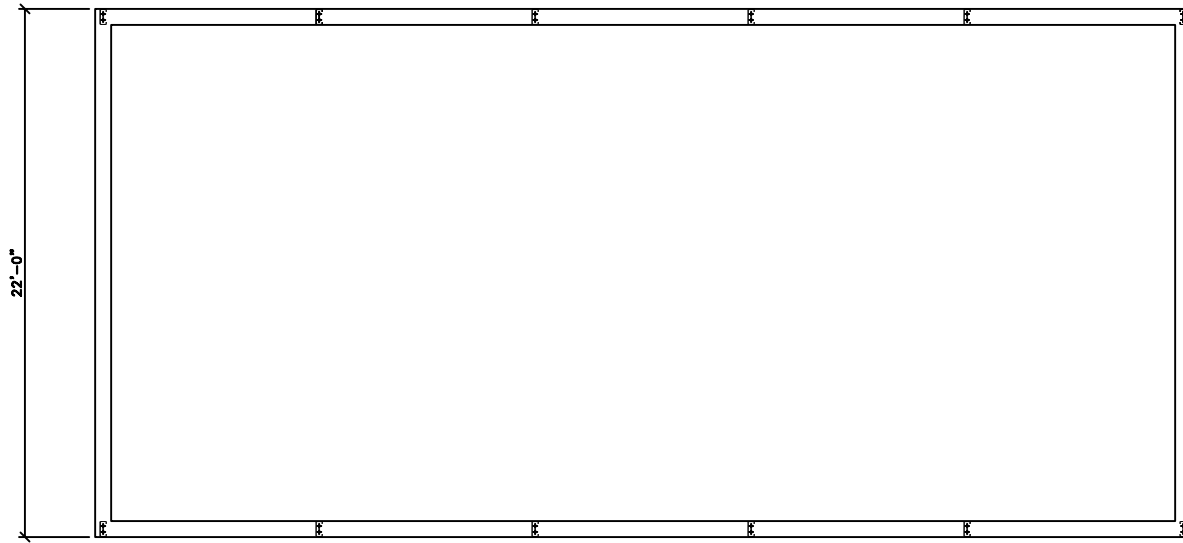
EXCALIBUR
STEEL STRUCTURES
ExcaliburSteel.com
423-624-1047



Kennesaw I

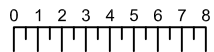


EXCALIBUR
STEEL STRUCTURES
ExcaliburSteel.com
423-624-1047



2nd Floor

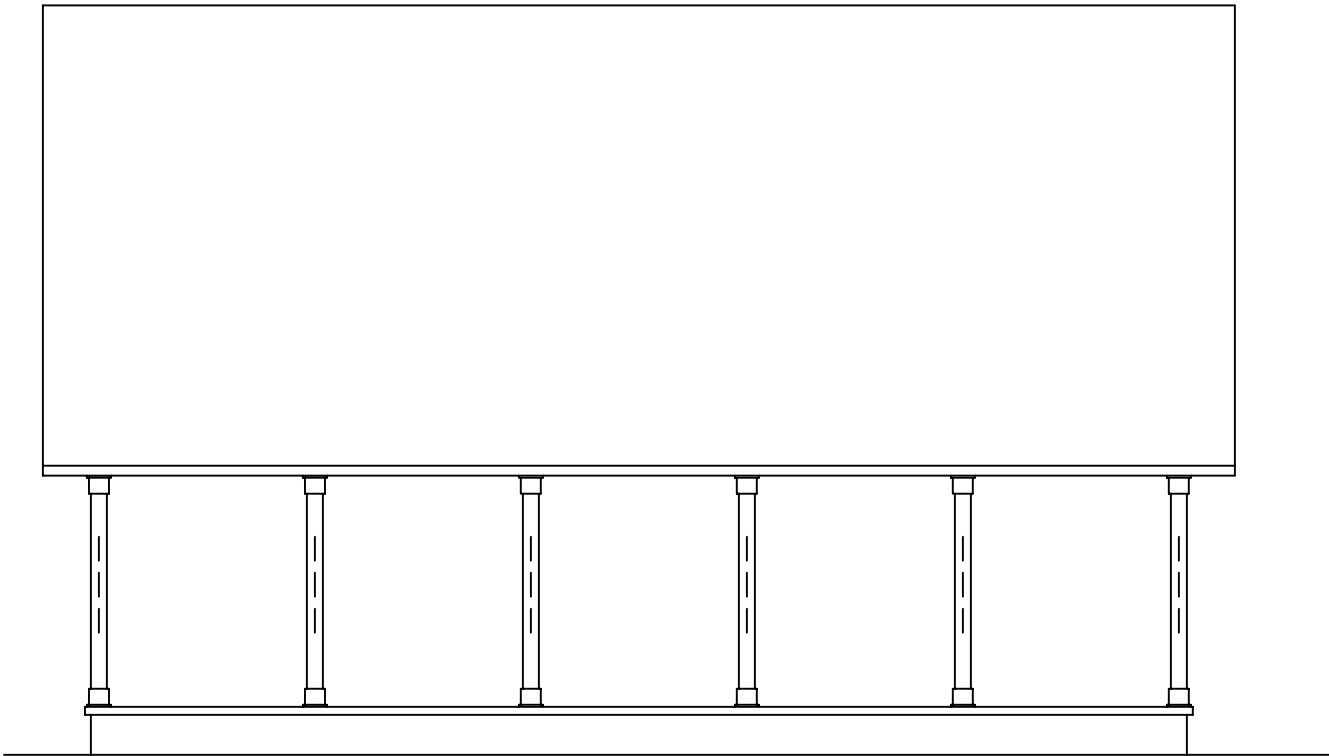
Kennesaw I



Scale: 1/8" = 1'

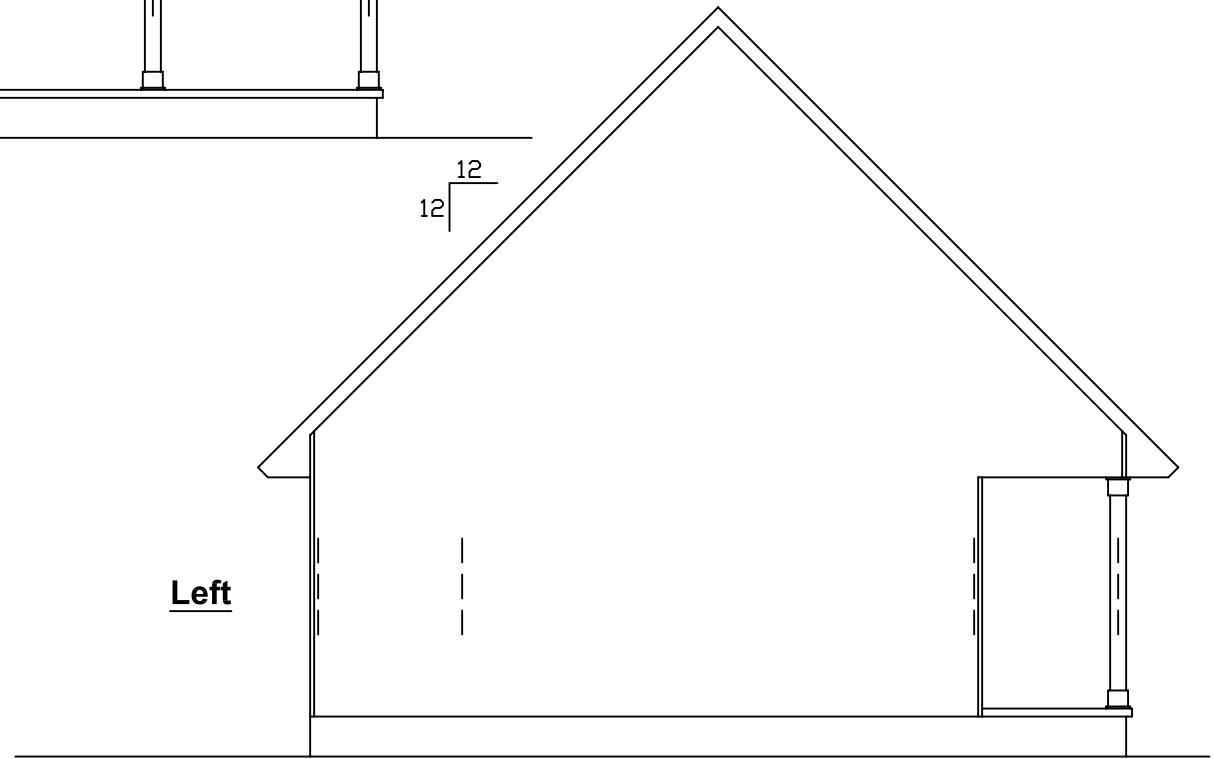


EXCALIBUR
STEEL STRUCTURES
ExcaliburSteel.com
423-624-1047



Front

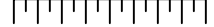
12
12



Left

Kennesaw I

0 1 2 3 4 5 6 7 8



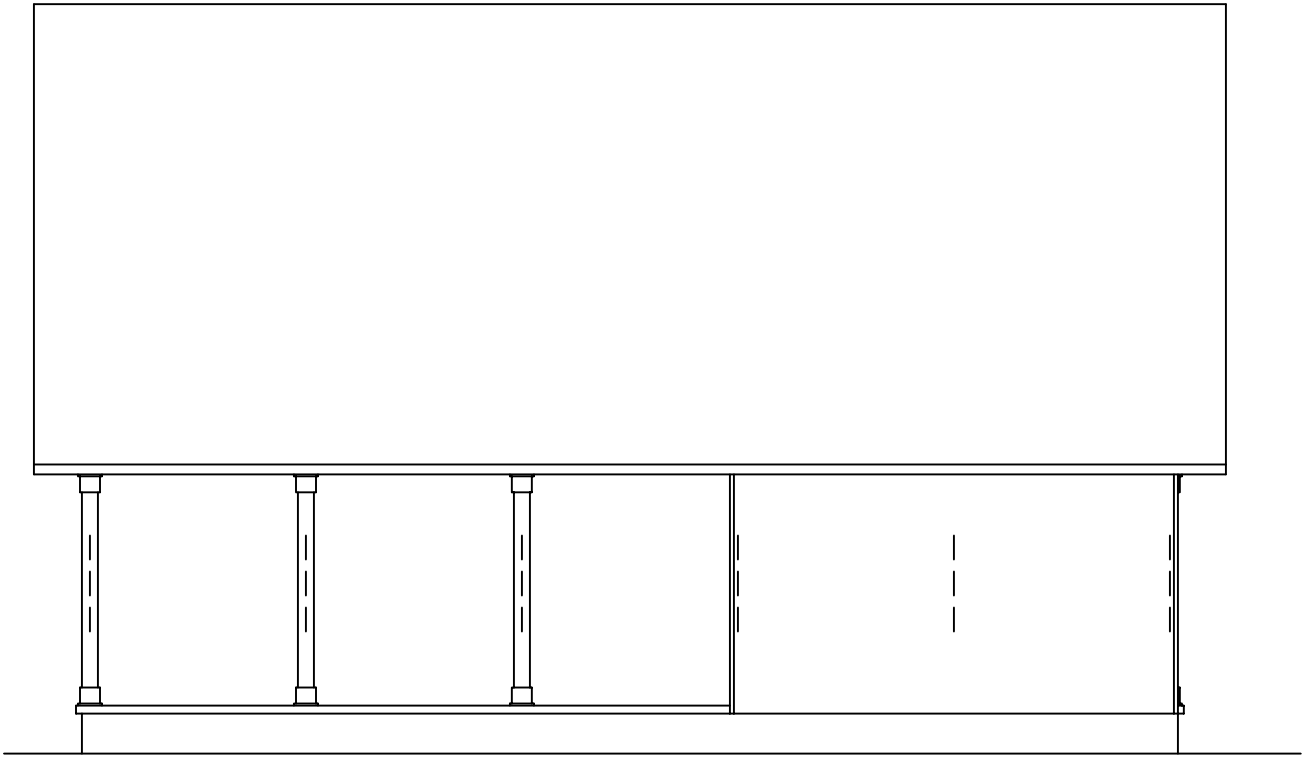
Scale: 1/8" = 1'



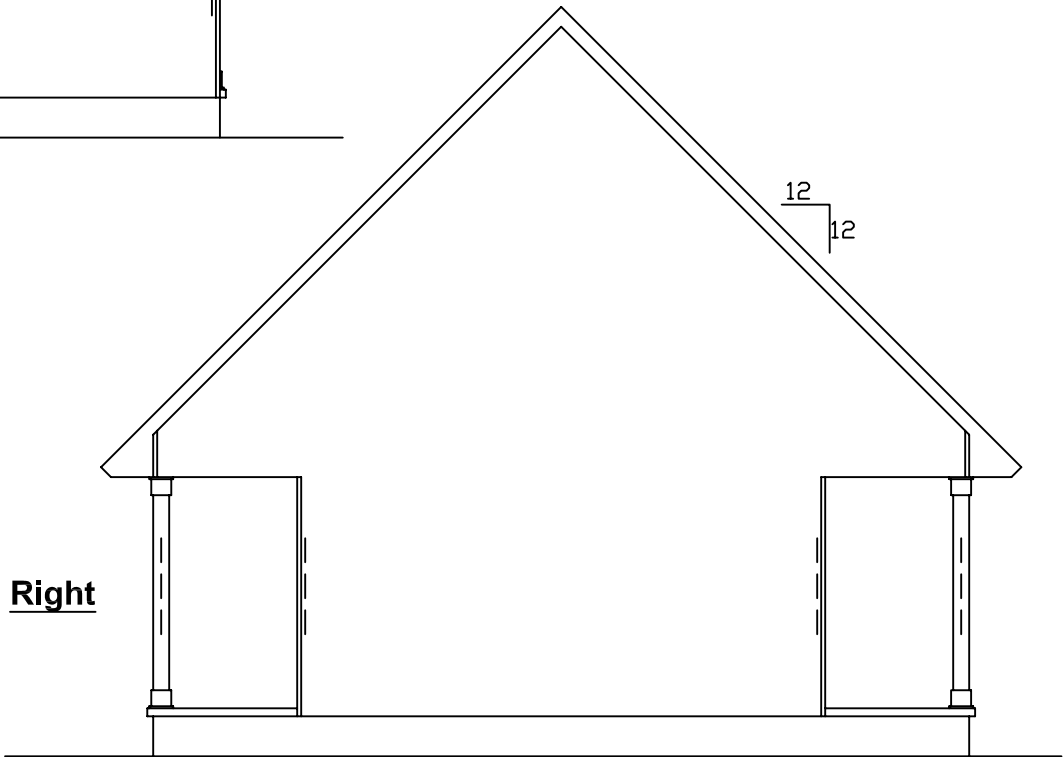
= COLUMN IN WALL



EXCALIBUR
STEEL STRUCTURES
ExcaliburSteel.com
423-624-1047

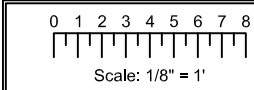


Rear



Right

Kennesaw I



 = COLUMN IN WALL



EXCALIBUR
STEEL STRUCTURES
ExcaliburSteel.com
423-624-1047