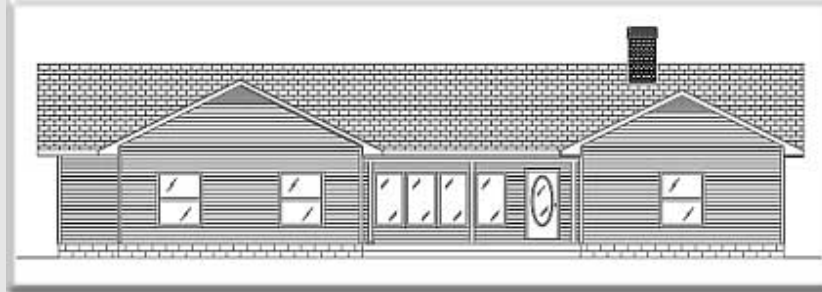




[← BACK](#) [CONTENTS](#) [NEXT →](#)

Jackson



Copyright© 1998 Excalibur Steel Structures of Tennessee, LLC.

Specifications*

Living Area, 1st Floor:	2,578 s.f.	Dimensions (Overall):	71'-4" x 46'-11"
Living Area, 2nd Floor:	n/a	Roof Pitch:	6/12
Utility:	80 s.f.	Ceiling Height, 1st Flr.:	9'
Garage:	n/a	Ceiling Height, 2nd Flr.:	n/a
Porch, Front:	189 s.f.	Bedrooms:	4
Porch, Side:	229 s.f.	Baths:	3
Total Area:	3,076 s.f.	Fireplace:	1
Basement (optional):	1,834 s.f.	Standard Model Price:	Price List

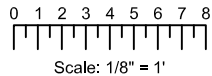
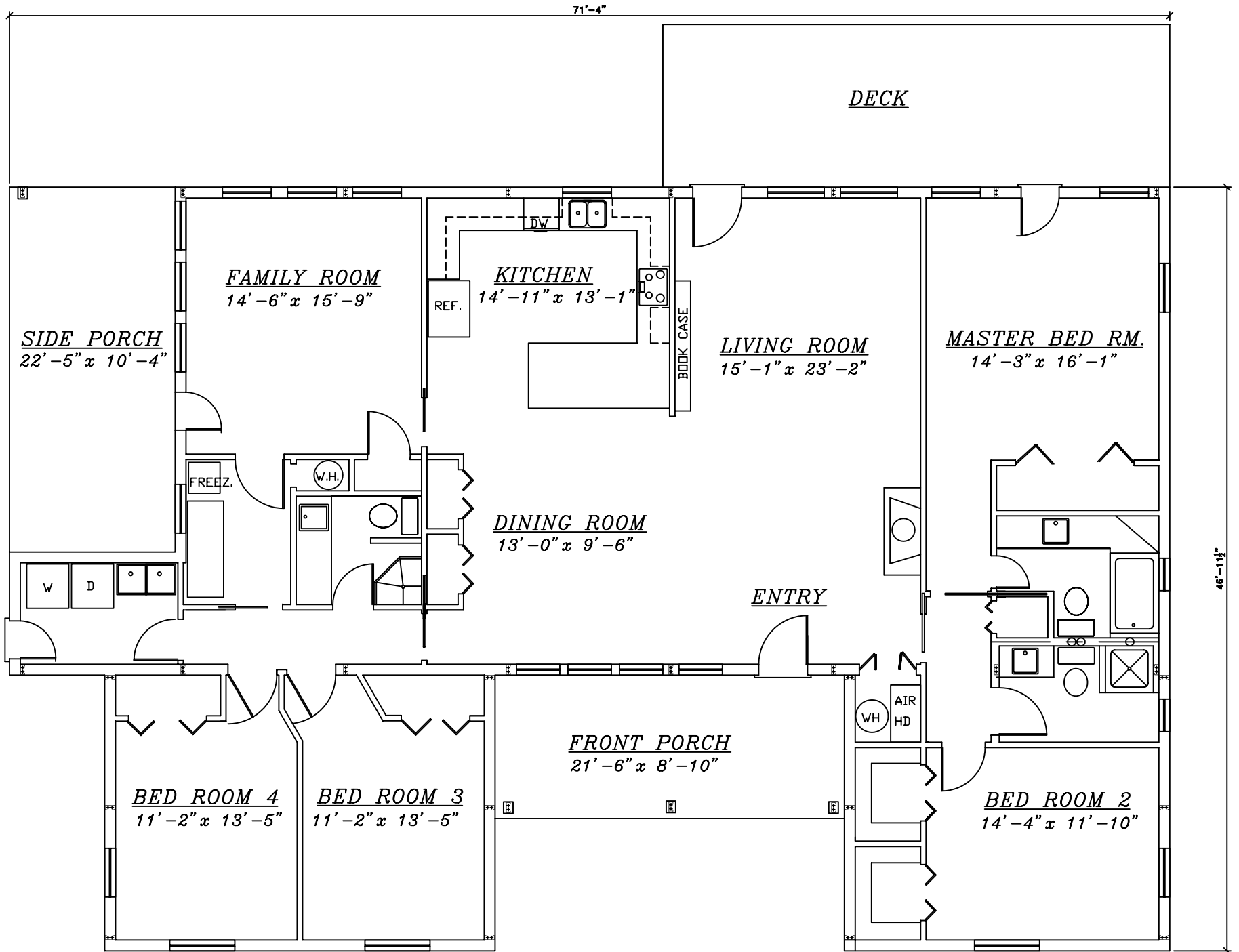


Front/ Left Elevation	Rear/ Right Elevation
1st Floor Plan	2nd Floor Plan

*Values are approximate



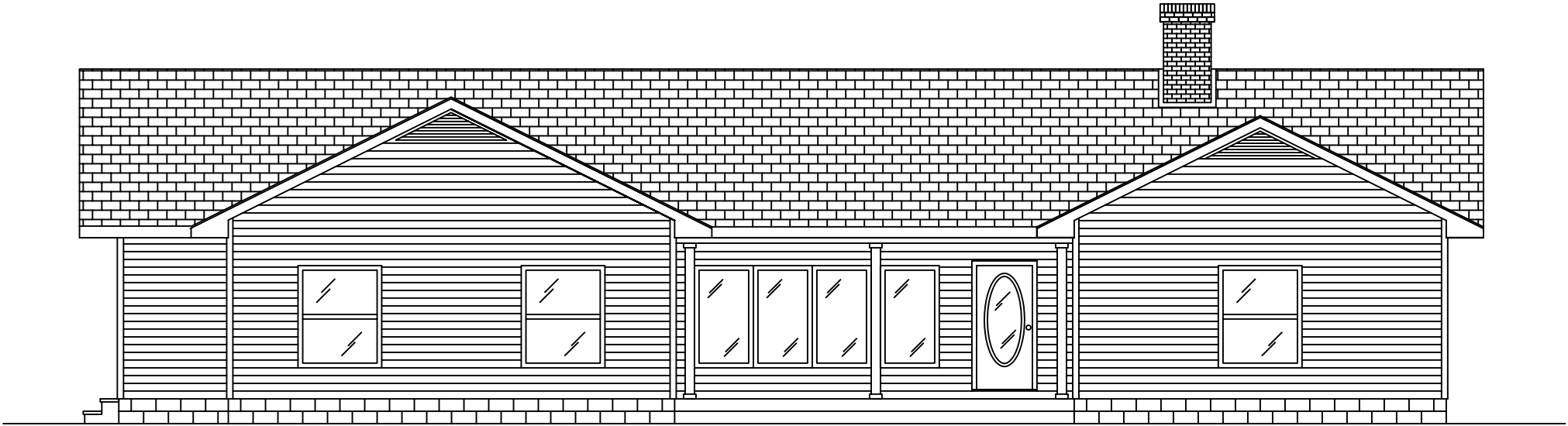
[RETURN TO HOME PAGE](#)



Jackson



EXCALIBUR
STEEL STRUCTURES
ExcaliburSteel.com
423-624-1047



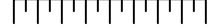
Front



Left

Jackson

0 1 2 3 4 5 6 7 8



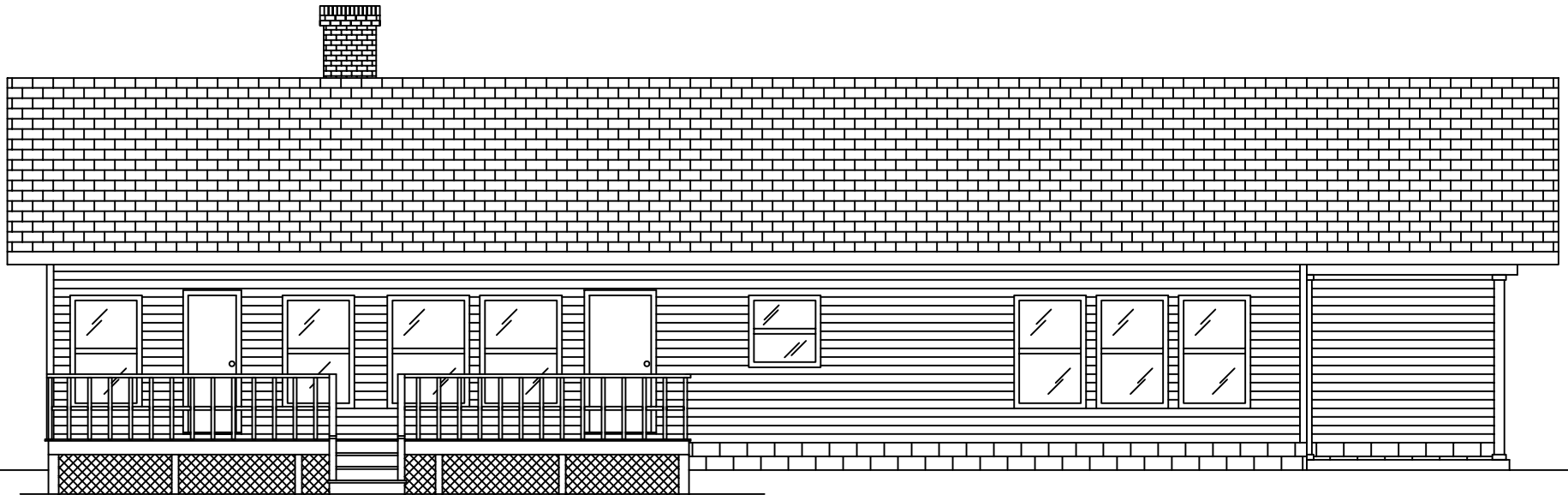
Scale: 1/8" = 1'



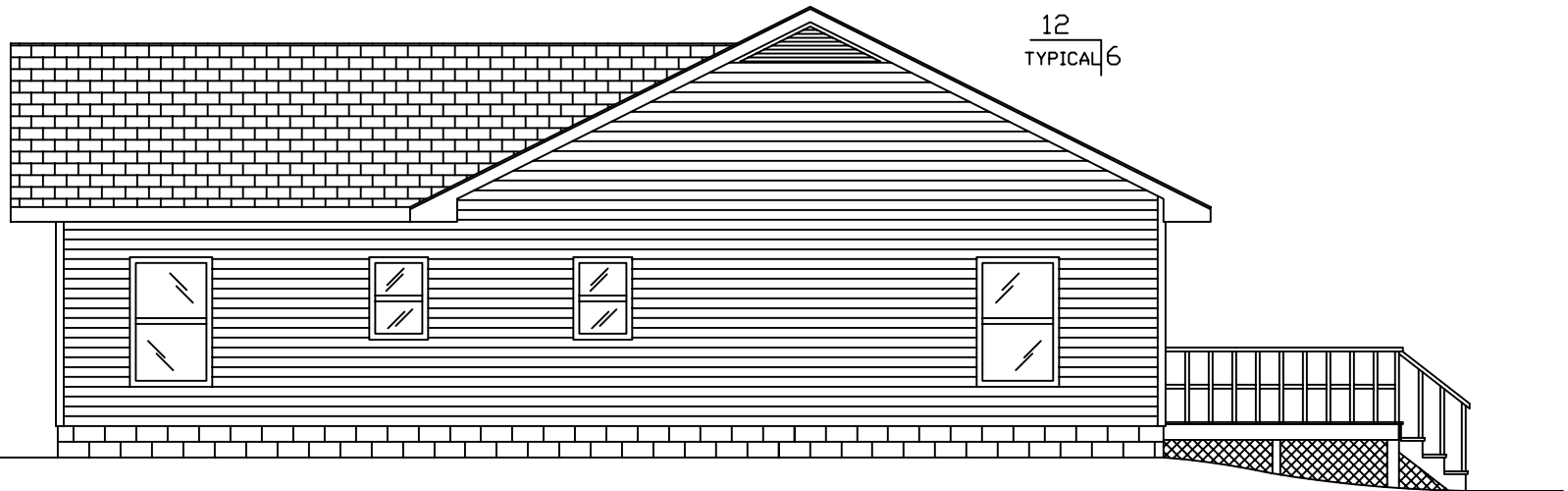
= COLUMN IN WALL



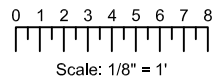
EXCALIBUR
STEEL STRUCTURES
ExcaliburSteel.com
423-624-1047



Rear



Right



 = COLUMN IN WALL

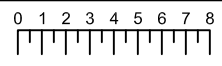
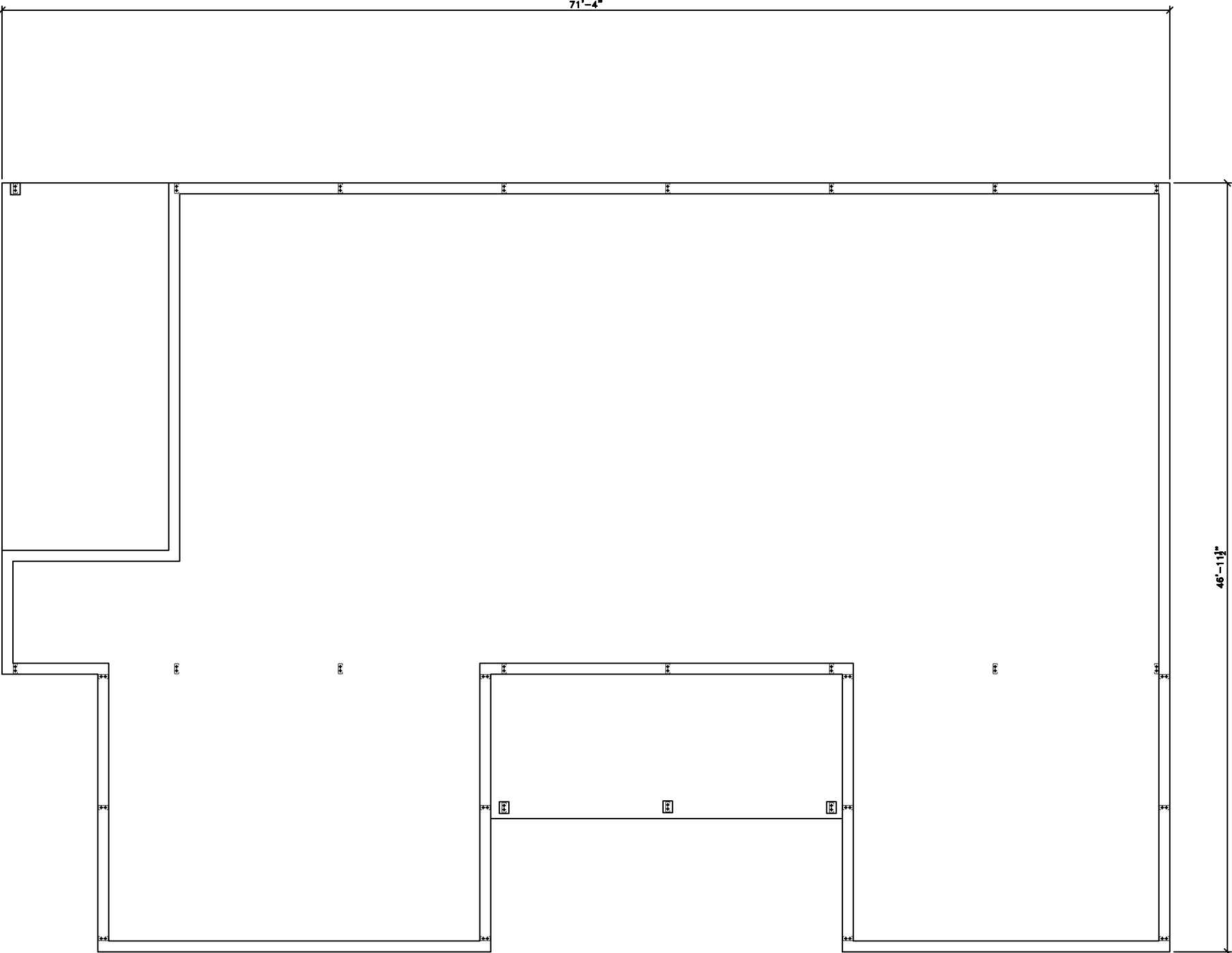
Jackson



EXCALIBUR
STEEL STRUCTURES
ExcaliburSteel.com
423-624-1047

71'-4"

46'-11 1/2"

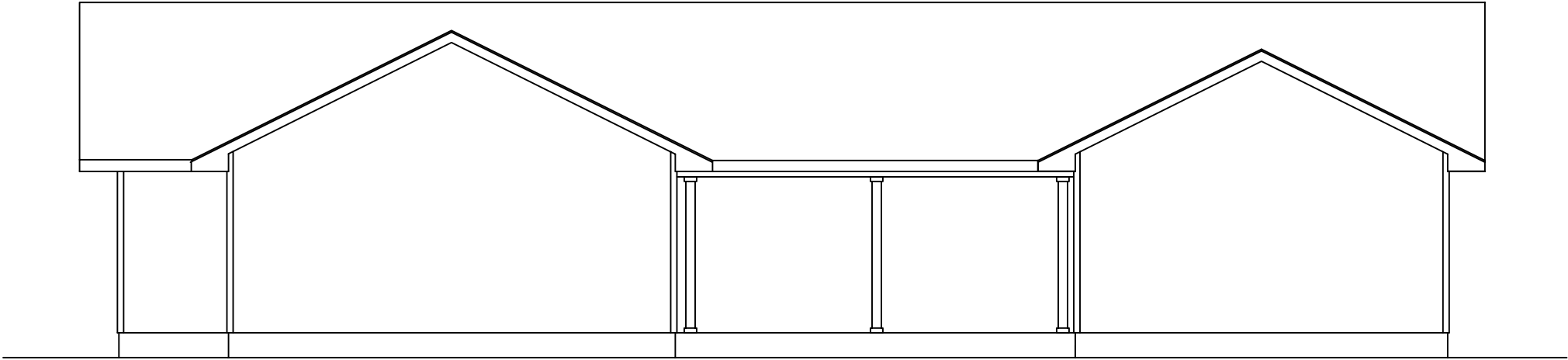


Scale: 1/8" = 1'

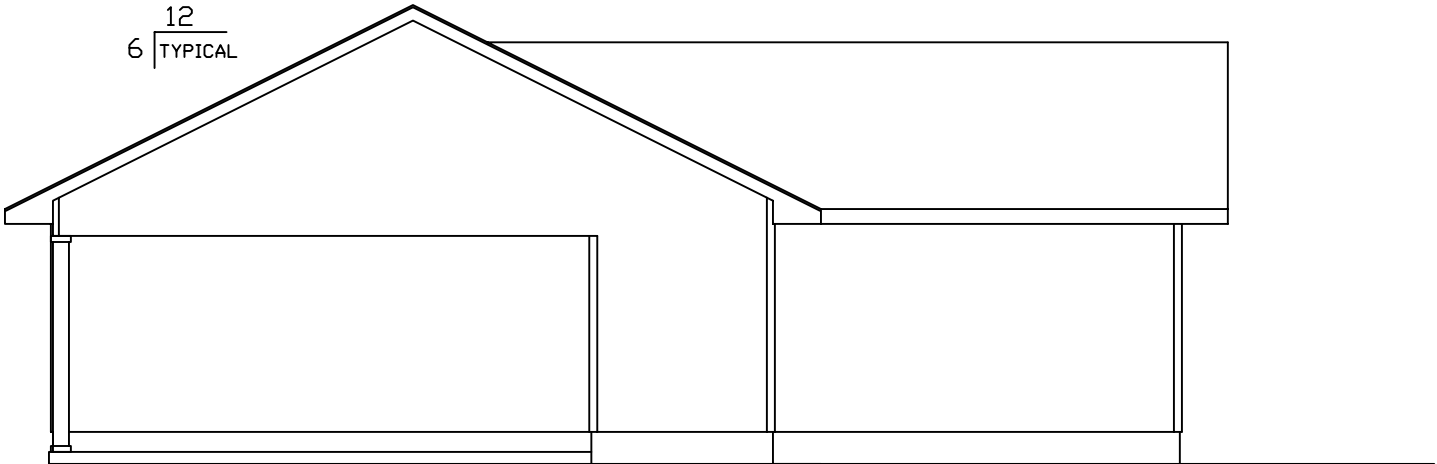
Jackson



EXCALIBUR
STEEL STRUCTURES
ExcaliburSteel.com
423-624-1047

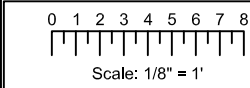


Front



Left

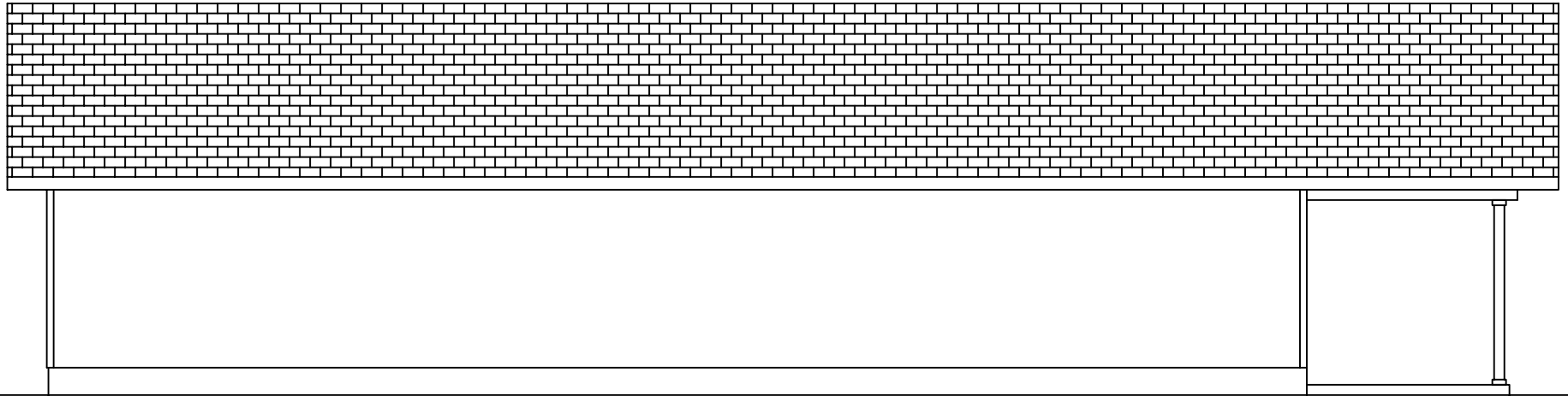
Jackson



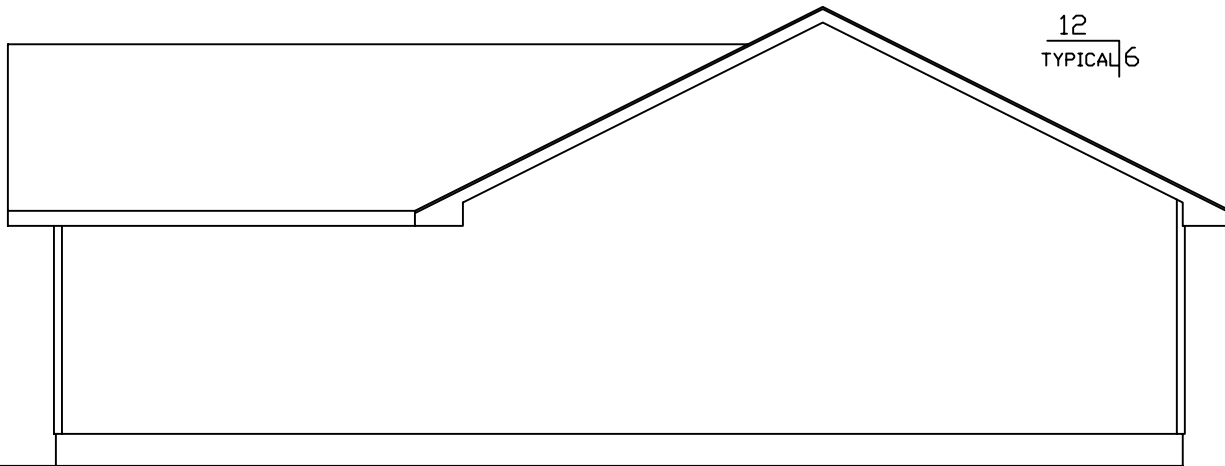
 = COLUMN IN WALL



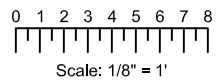
EXCALIBUR
STEEL STRUCTURES
ExcaliburSteel.com
423-624-1047



Rear



Right



 = COLUMN IN WALL

Jackson



EXCALIBUR
STEEL STRUCTURES
ExcaliburSteel.com
423-624-1047