



[← BACK](#)   [CONTENTS](#)   [NEXT →](#)

## Glendale



Copyright© 1998 Excalibur Steel Structures of Tennessee, LLC.

### Specifications\*

Living Area, 1st Floor:	2,059 s.f.	Dimensions (Overall):	85'-3" x 49'-4"
Living Area, 2nd Floor:	n/a	Roof Pitch:	6/12
Utility:	58 s.f.	Ceiling Height, 1st Flr.:	8', 12'
Garage:	704 s.f.	Ceiling Height, 2nd Flr.:	n/a
Entry, Covered:	125 s.f.	Bedrooms:	3
Patio, Rear:	n/a	Baths:	1
<b>Total Area:</b>	<b>2,946 s.f.</b>	Fireplace:	1
Basement (optional):	n/a	Standard Model Price:	<a href="#">Price List</a>

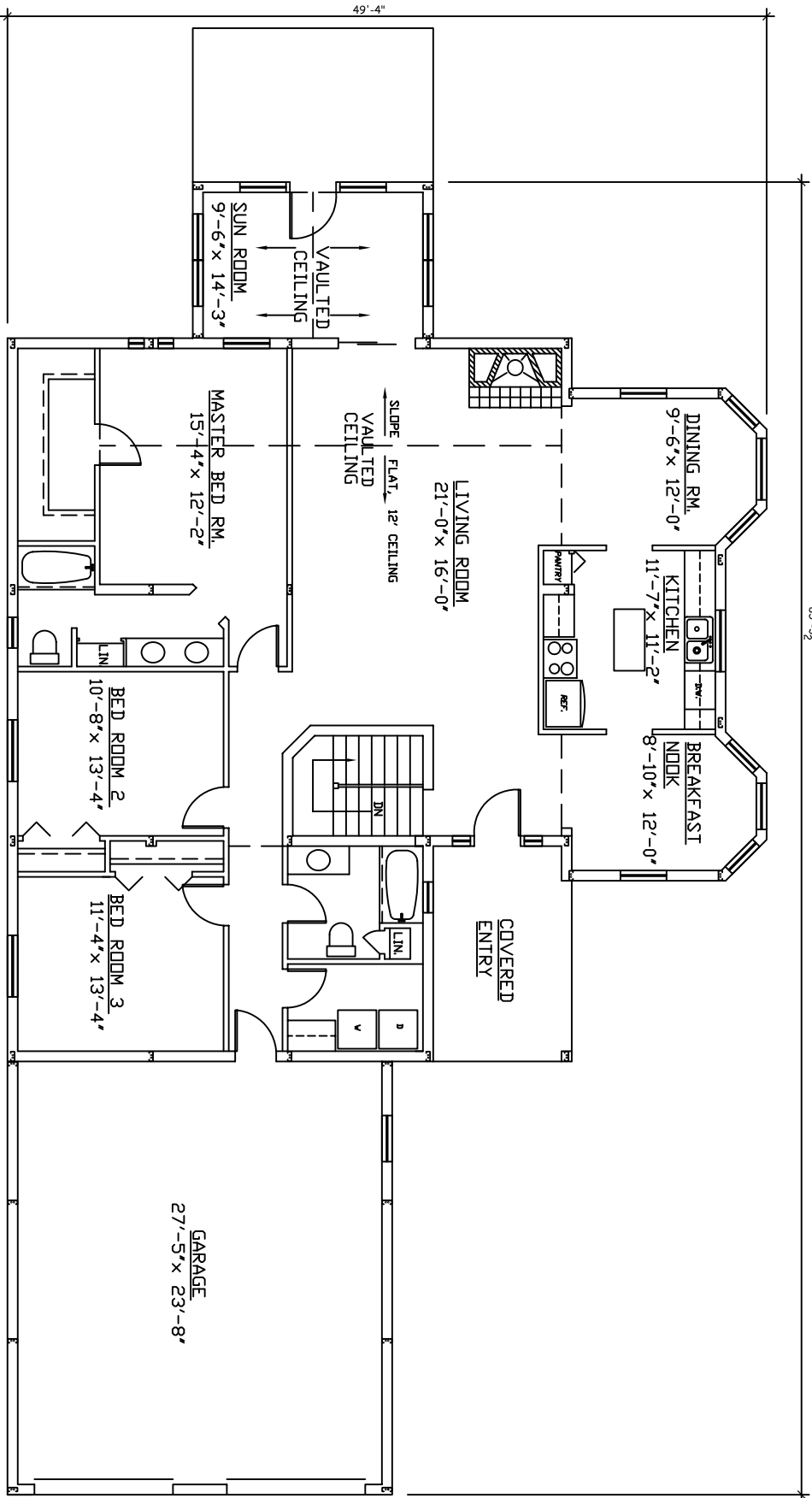


[Front/ Left Elevation](#)   [Rear/ Right Elevation](#)  
[1st Floor Plan](#)   [2nd Floor Plan](#)

\*Values are approximate



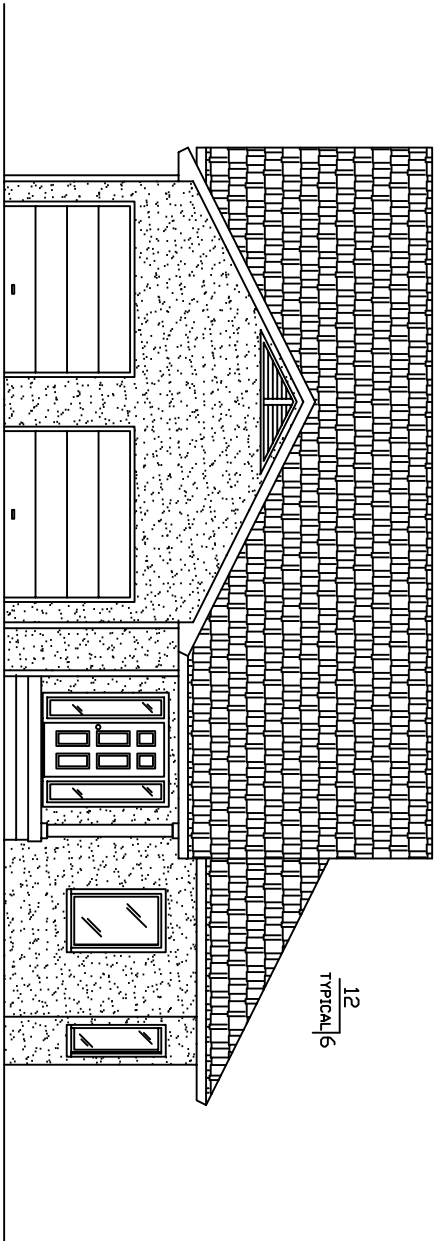
[RETURN TO HOME PAGE](#)



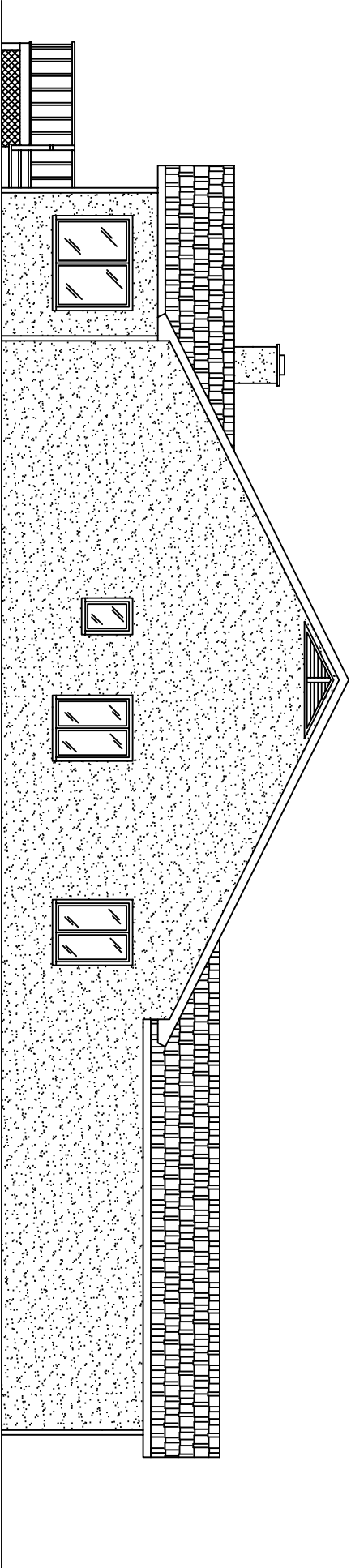
**1st Floor**

**Glendale**





**Front**

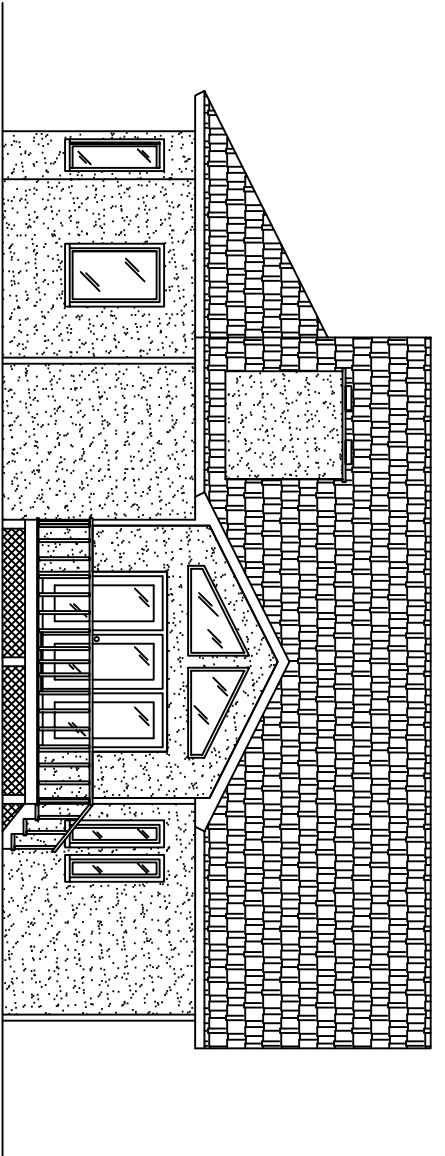


**Left**

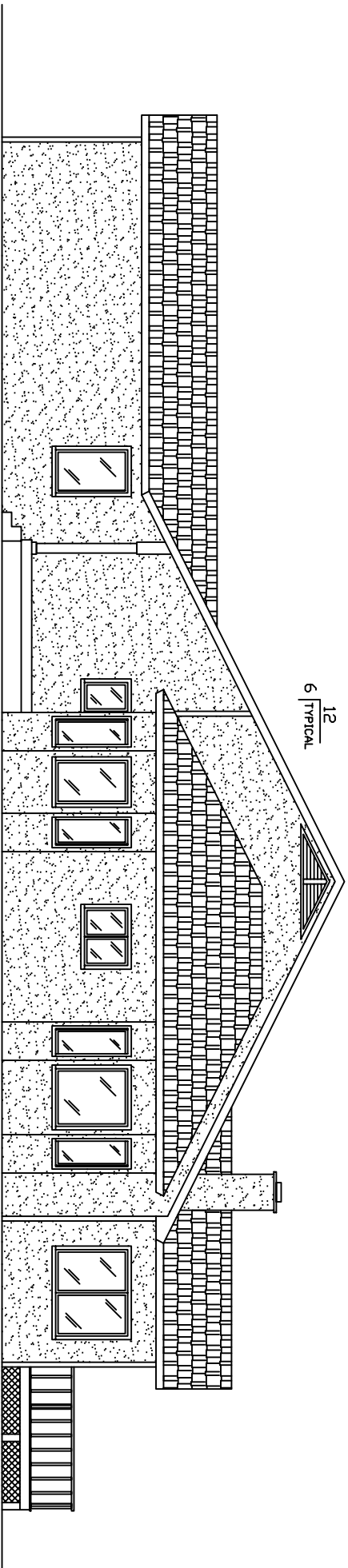


= COLUMN IN WALL

**Glendale**



Rear



12  
6 | TYPICAL

Right

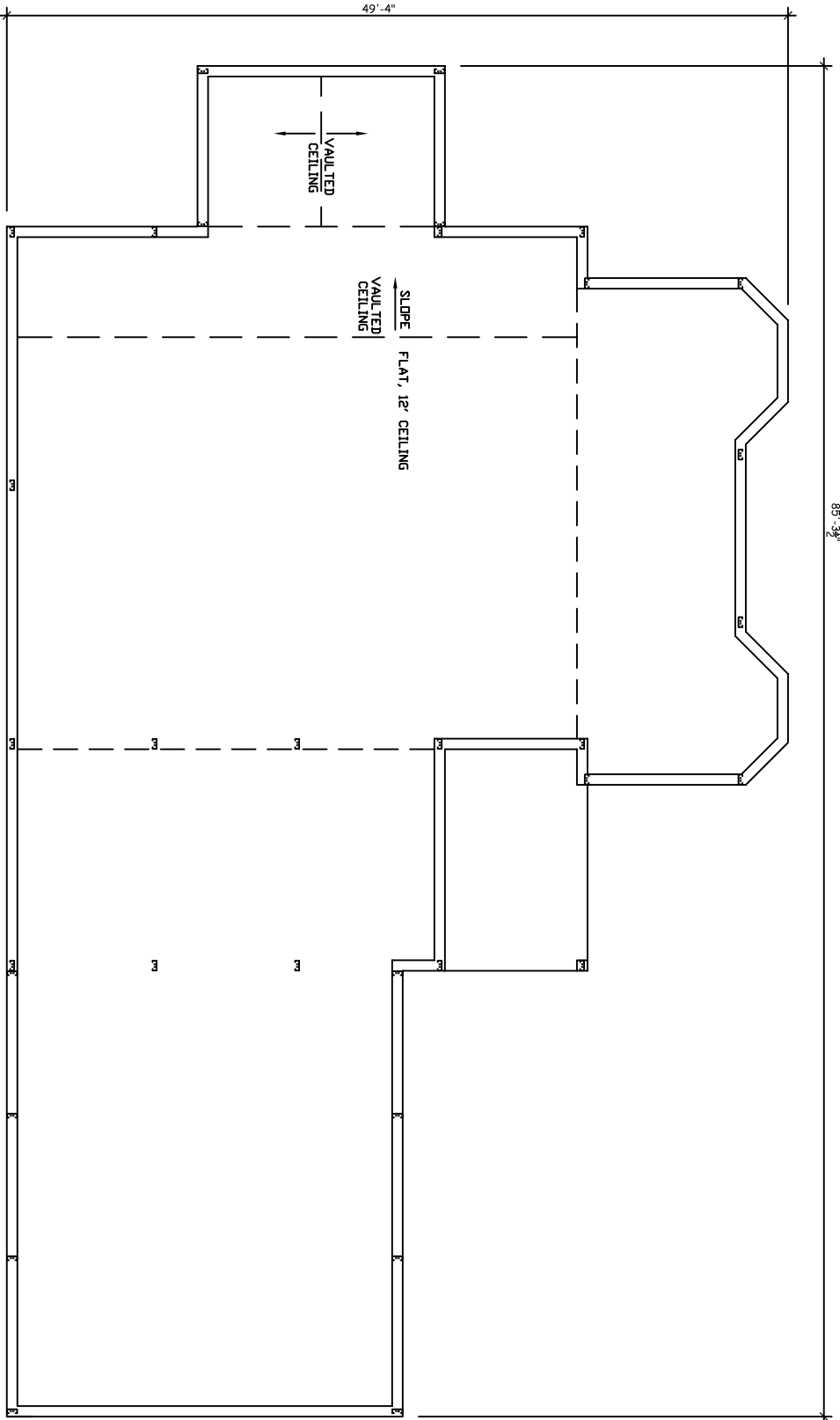


— = COLUMN IN WALL

**Glendale**

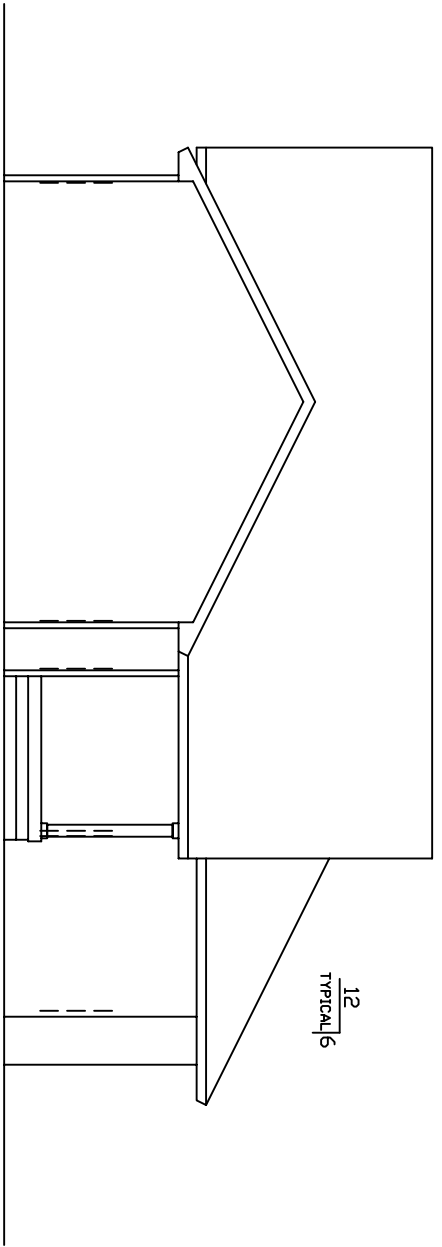


EXCALIBUR  
STEEL STRUCTURES  
ExcaltiburSteel.com  
423-624-1047

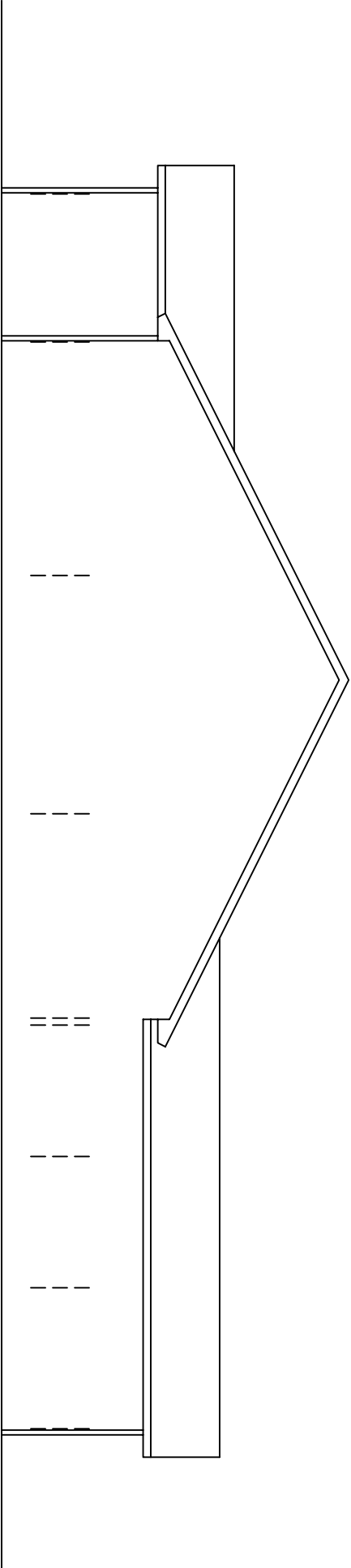


**1st Floor**

**Glendale**



**Front**



**Left**



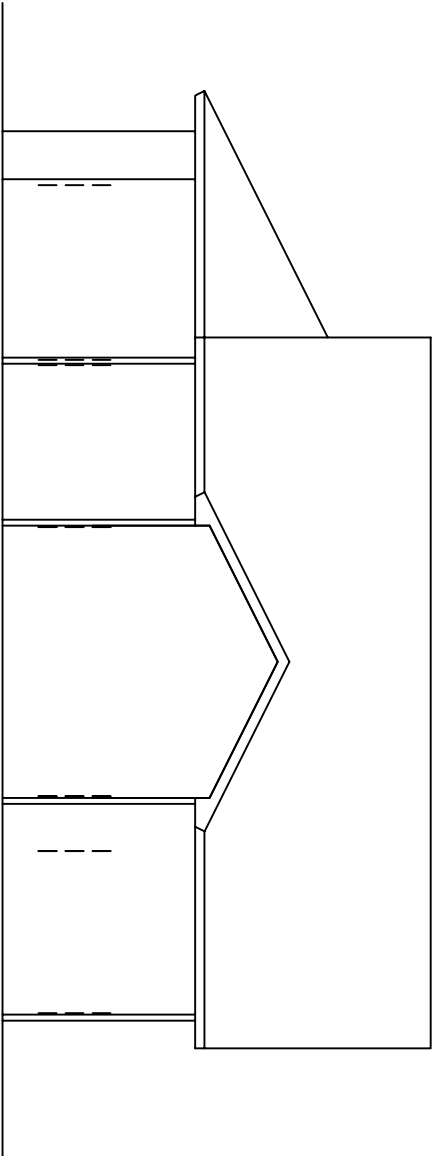
Scale: 3/32" = 1'



= COLUMN IN WALL

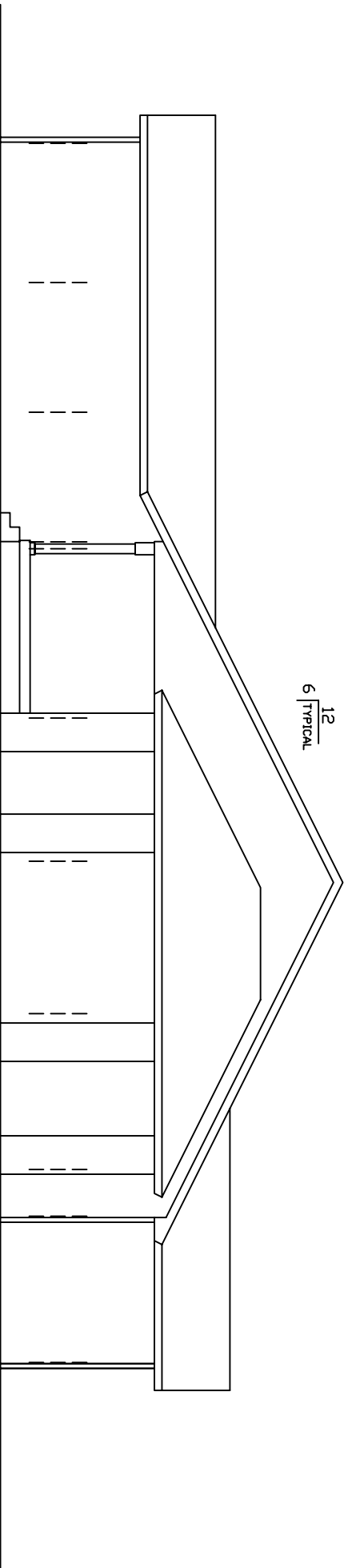
**Glendale**

EXCALIBUR  
STEEL STRUCTURES  
ExcaltiburSteel.com  
429-624-1047



Rear

$\frac{12}{6}$  TYPICAL



Right



 = COLUMN IN WALL

**Glendale**



EXCALTIBUR  
STEEL STRUCTURES  
ExcaltiburSteel.com  
423-624-1047