



[← BACK](#) [CONTENTS](#) [NEXT →](#)

Decatur



Copyright© 2001 Excalibur Steel Structures of Tennessee, LLC.

Specifications*

Living Area, 1st Floor:	2,774 s.f.	Dimensions (Overall):	63'-8" x 54'-0"
Living Area, 2nd Floor:	846 s.f.	Roof Pitch:	8/12
		Ceiling Height, 1st Flr.:	9'
Garage:	n/a	Ceiling Height, 2nd Flr.:	8'
Porch, Front:	382 s.f.	Bedrooms:	4
Porch, Rear:	n/a	Baths:	2 full, 1 half
Total Area:	4,002 s.f.	Fireplace:	1
Basement (optional):	2,774 s.f.	Standard Model Price:	Price List



[Help/info](#)

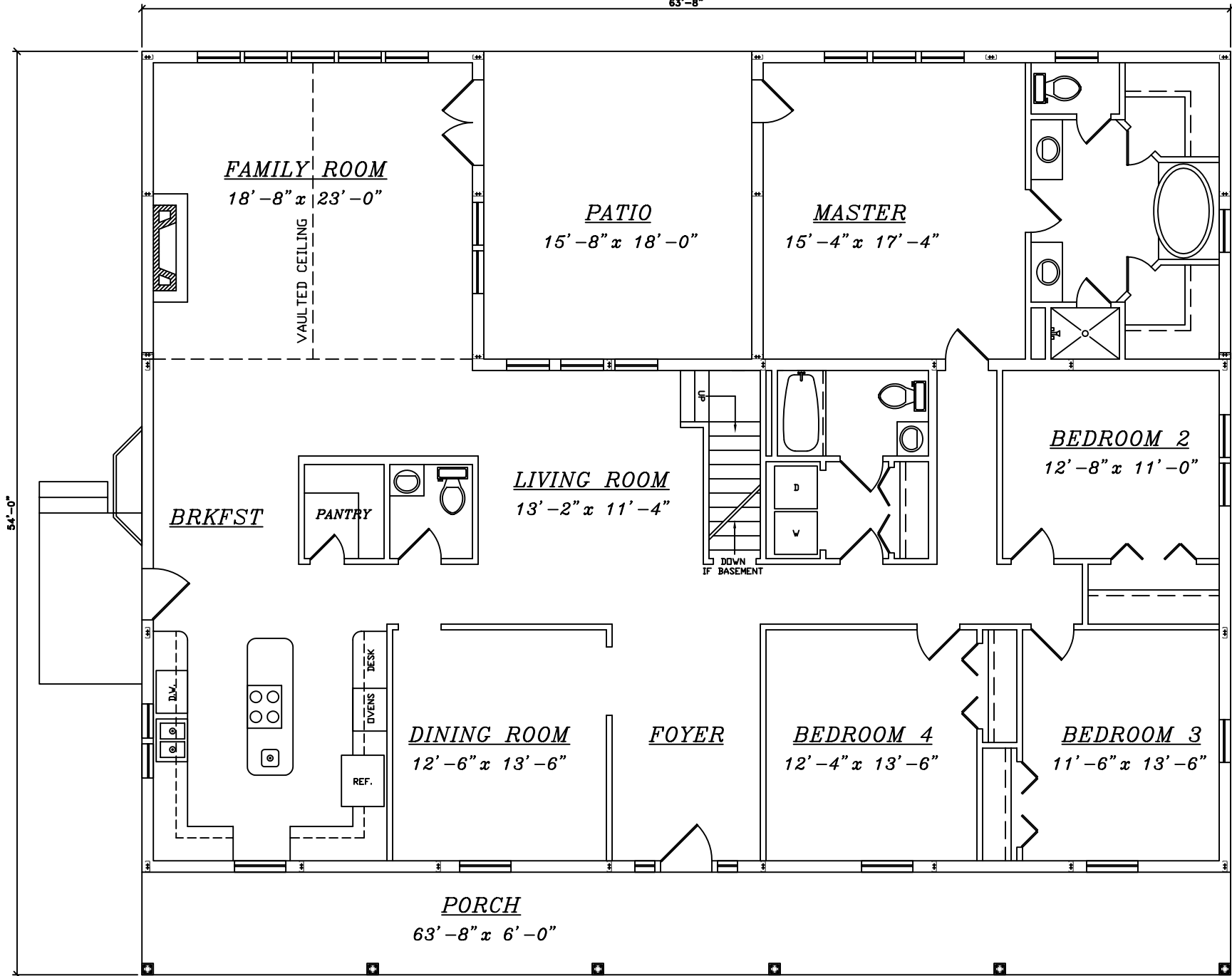
Front/ Left Elevation	Rear/ Right Elevation
1st Floor Plan	2nd Floor Plan

*Values are approximate



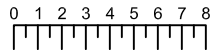
[RETURN TO HOME PAGE](#)

63'-8"



1st Floor

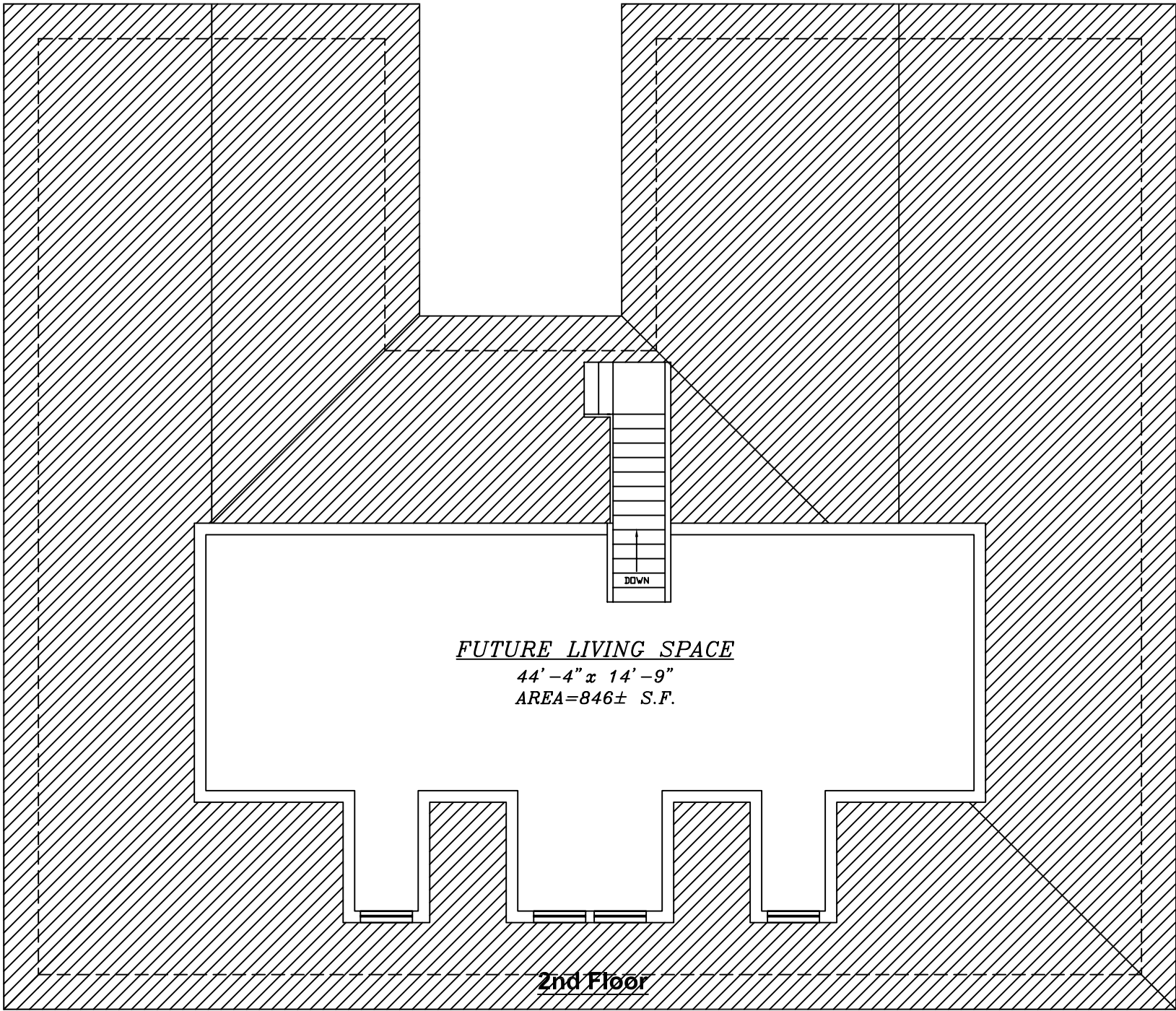
Decatur



Scale: 1/8" = 1'

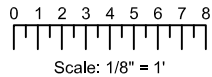


EXCALIBUR
STEEL STRUCTURES
ExcaliburSteel.com
423-624-1047



FUTURE LIVING SPACE
44'-4" x 14'-9"
AREA=846± S.F.

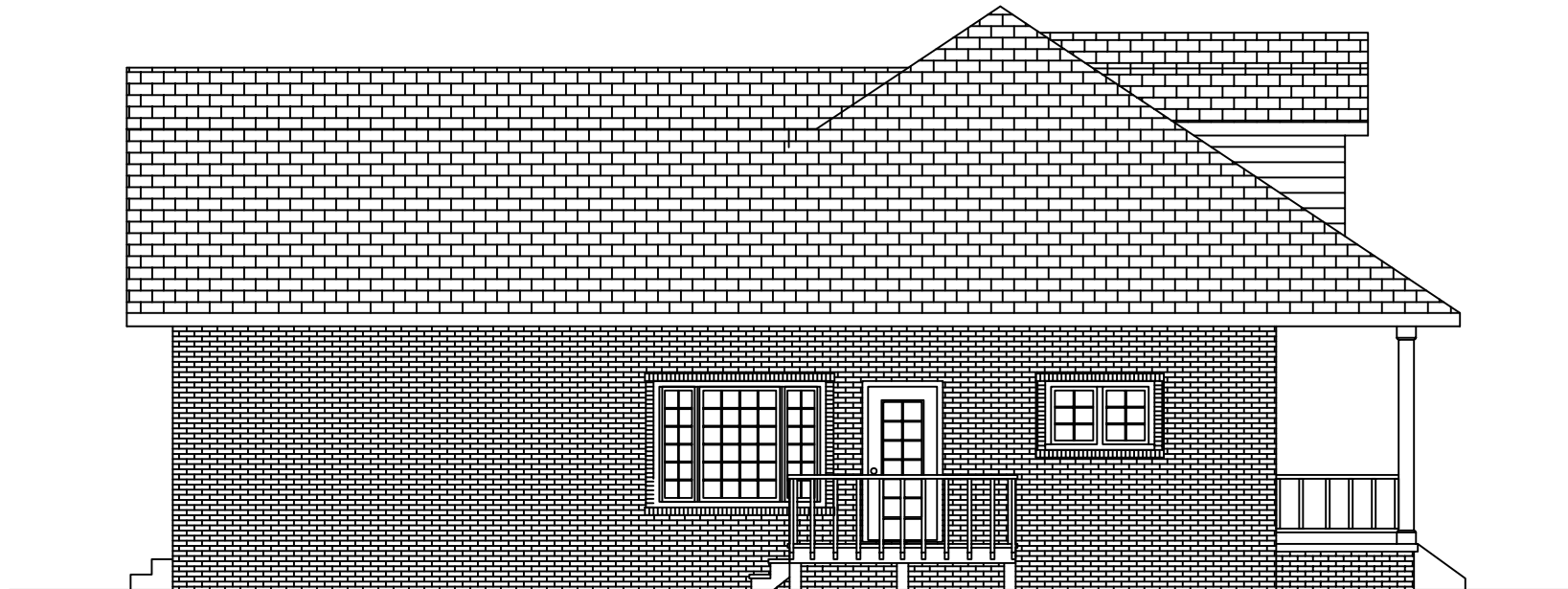
2nd Floor



Decatur

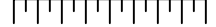


Front



Left

0 1 2 3 4 5 6 7 8



Scale: 1/8" = 1'

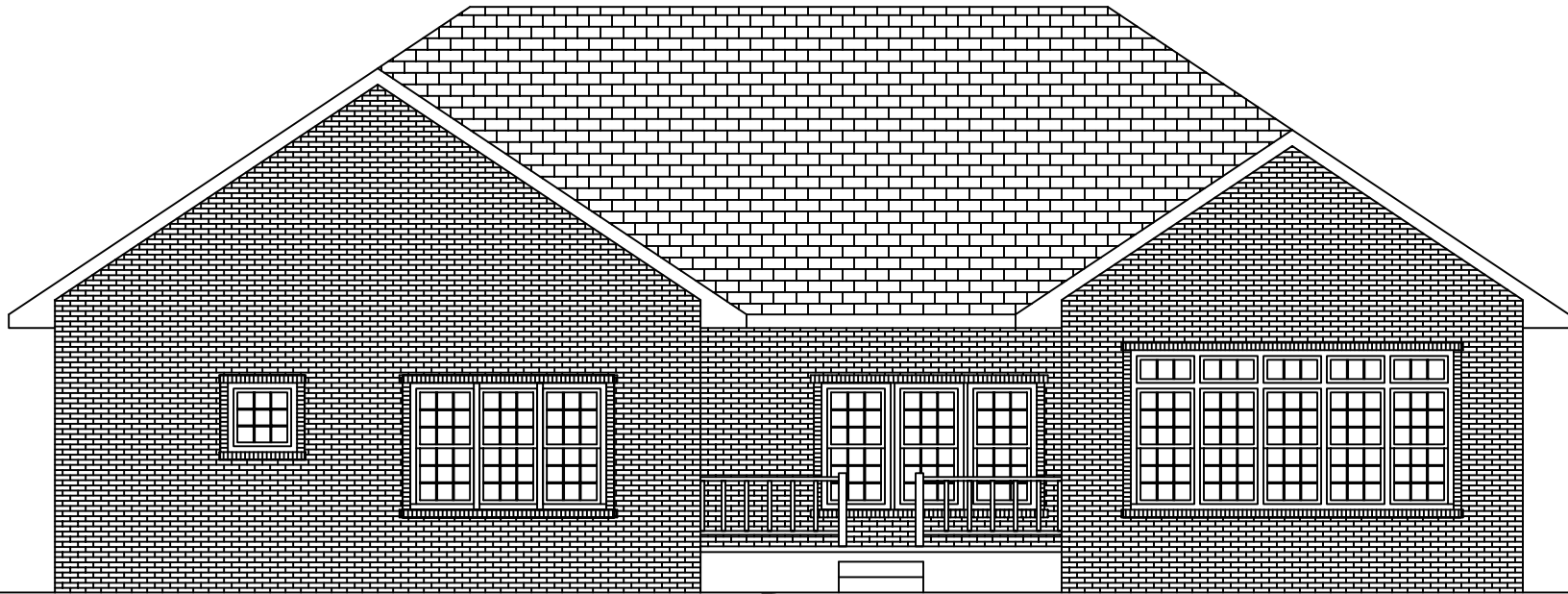


= COLUMN IN WALL

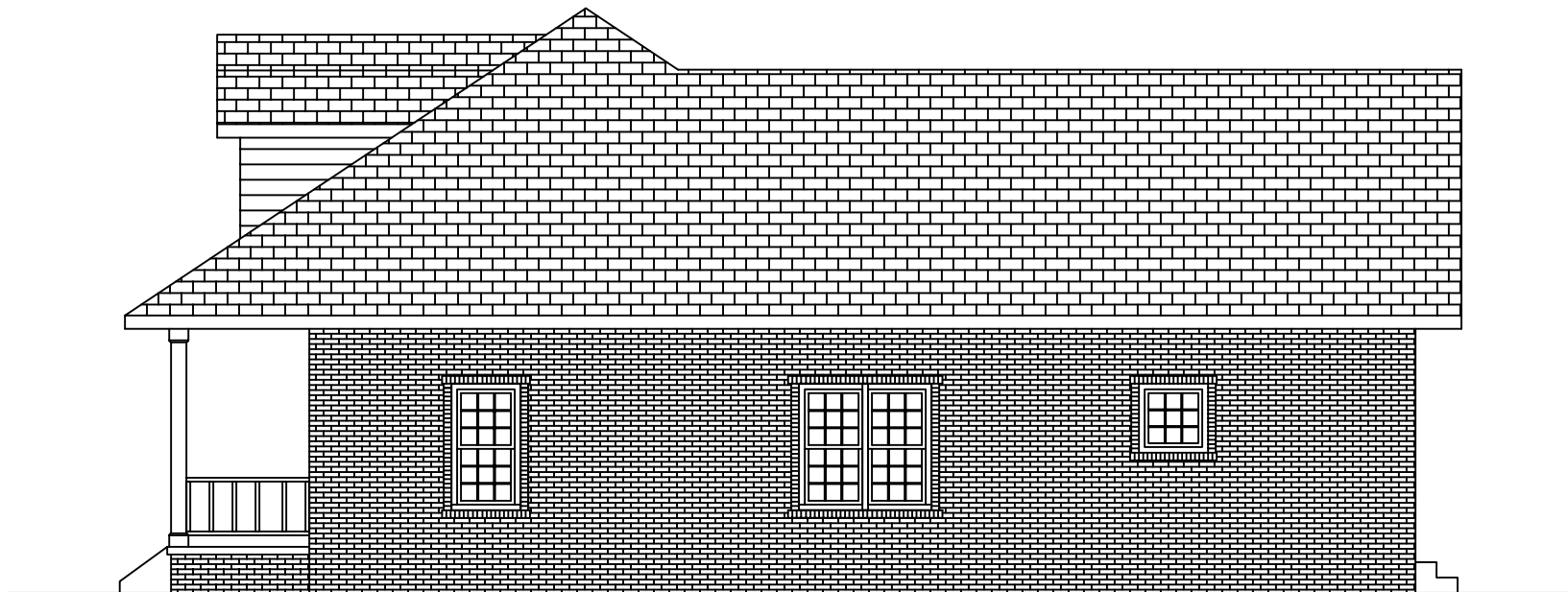
Decatur



EXCALIBUR
STEEL STRUCTURES
ExcaliburSteel.com
423-624-1047

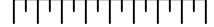


Rear



Right

0 1 2 3 4 5 6 7 8



Scale: 1/8" = 1'

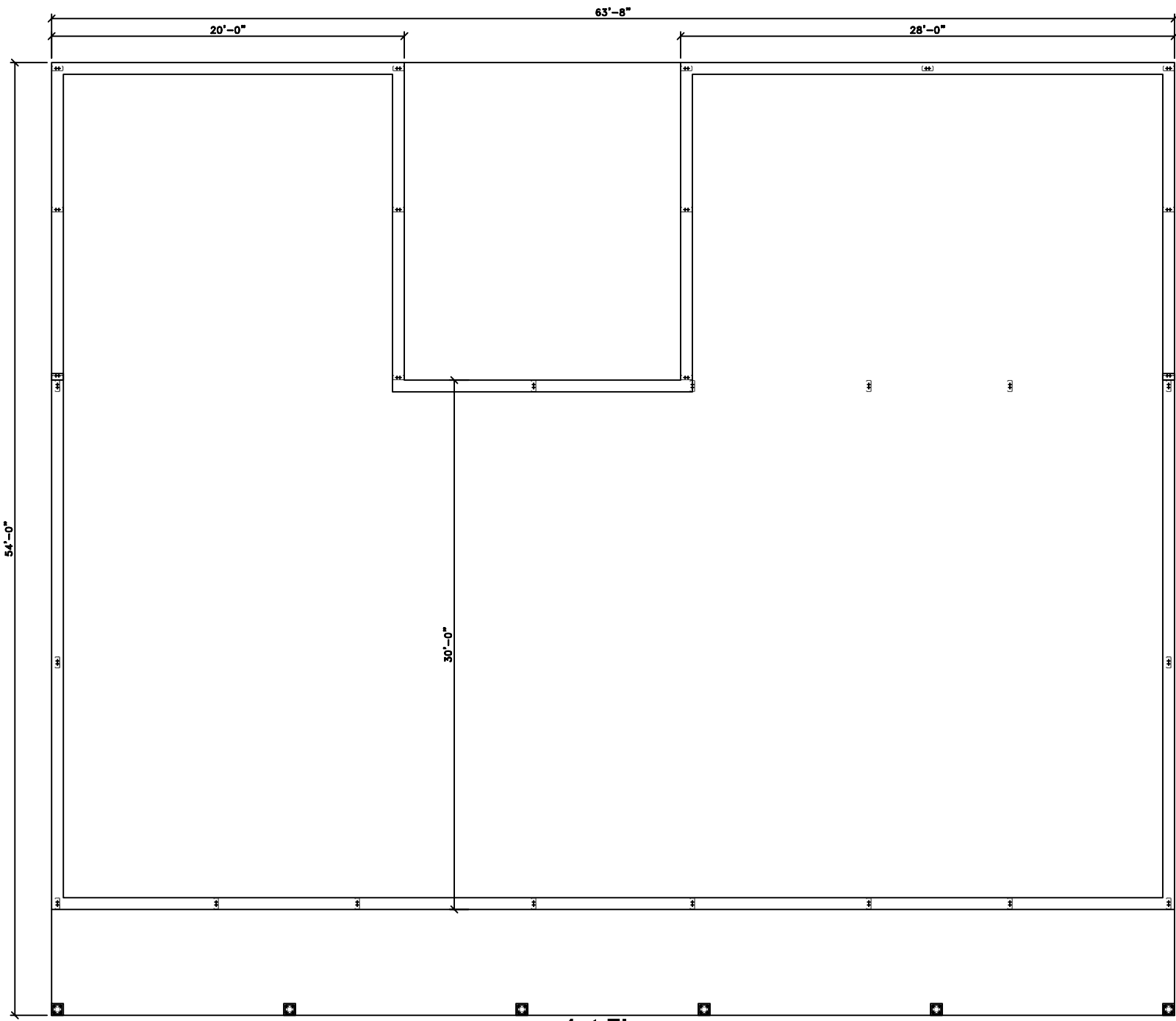


= COLUMN IN WALL

Decatur

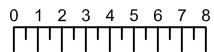


EXCALIBUR
STEEL STRUCTURES
ExcaliburSteel.com
423-624-1047



1st Floor

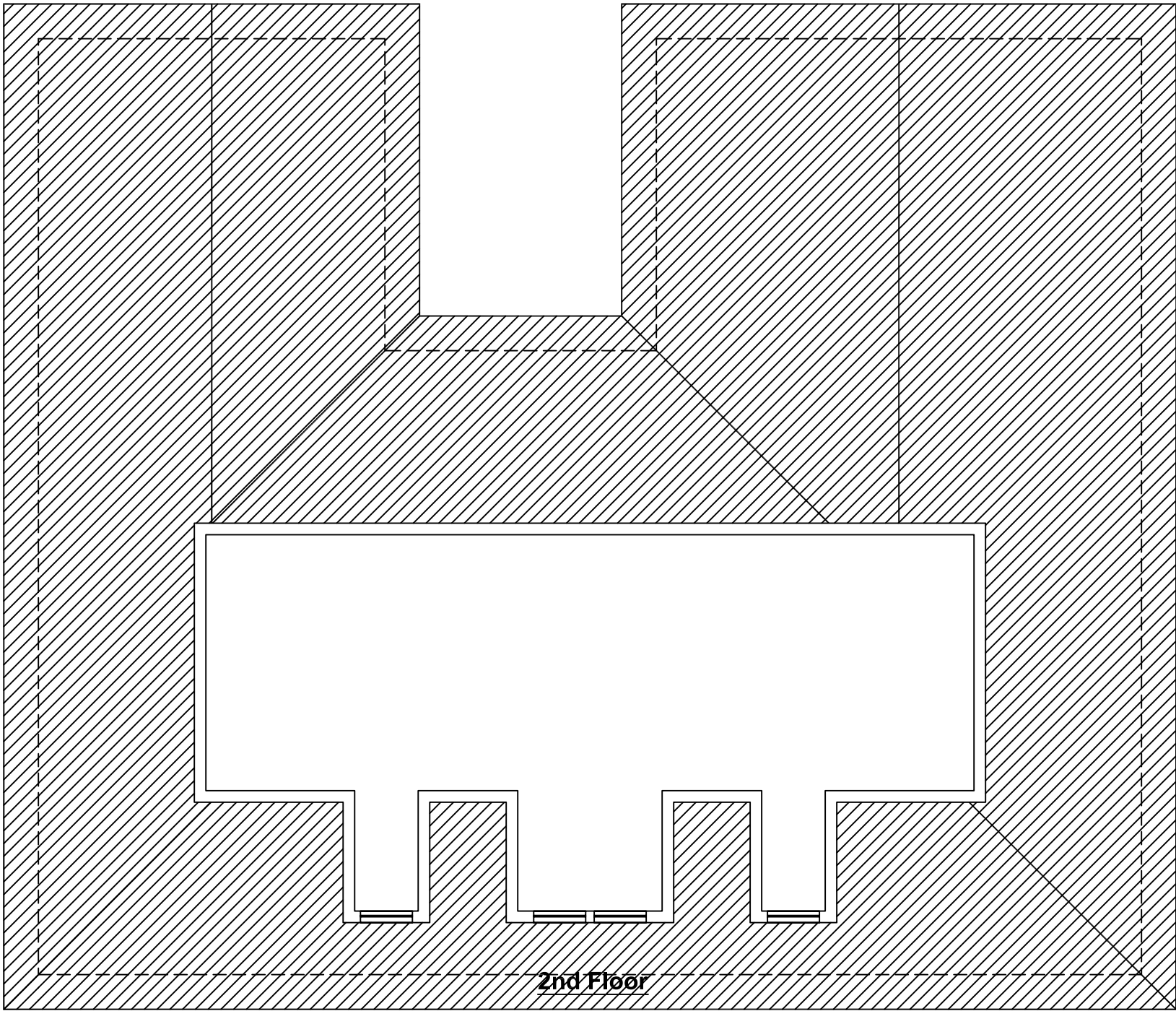
Decatur



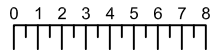
Scale: 1/8" = 1'



EXCALIBUR
STEEL STRUCTURES
ExcaliburSteel.com
423-624-1047



2nd Floor

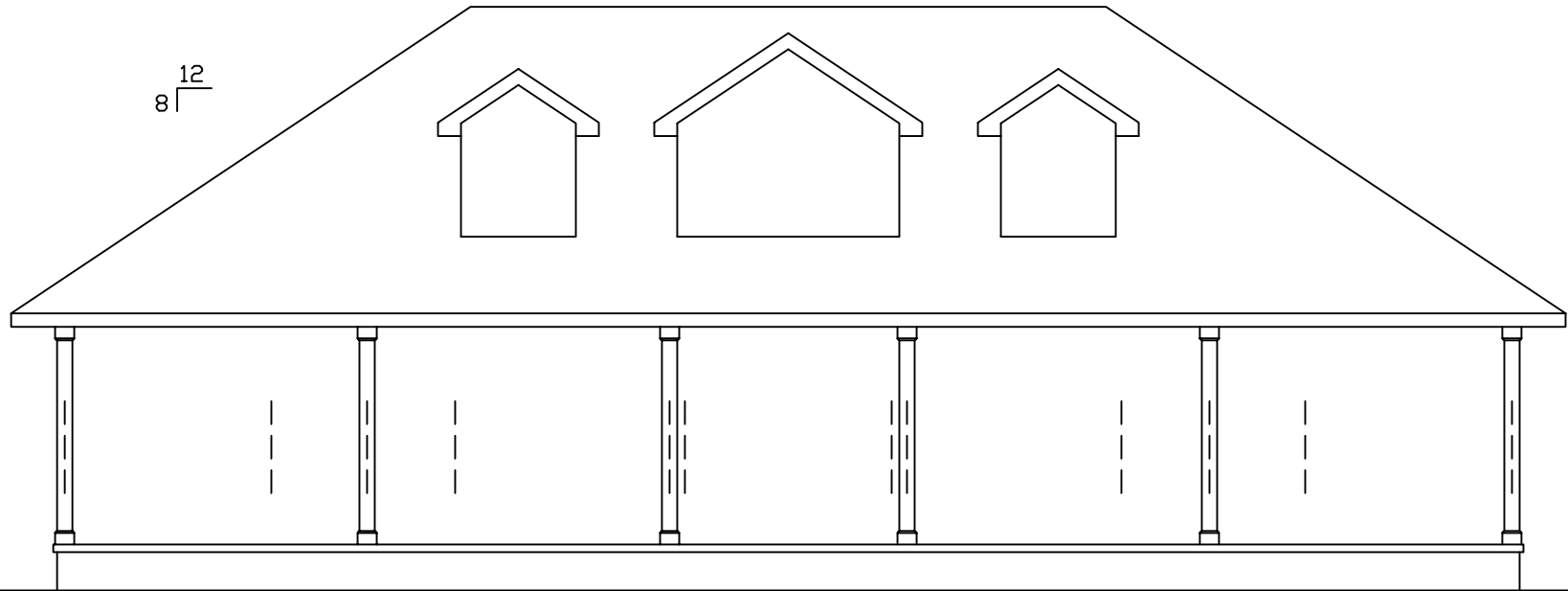


Scale: 1/8" = 1'

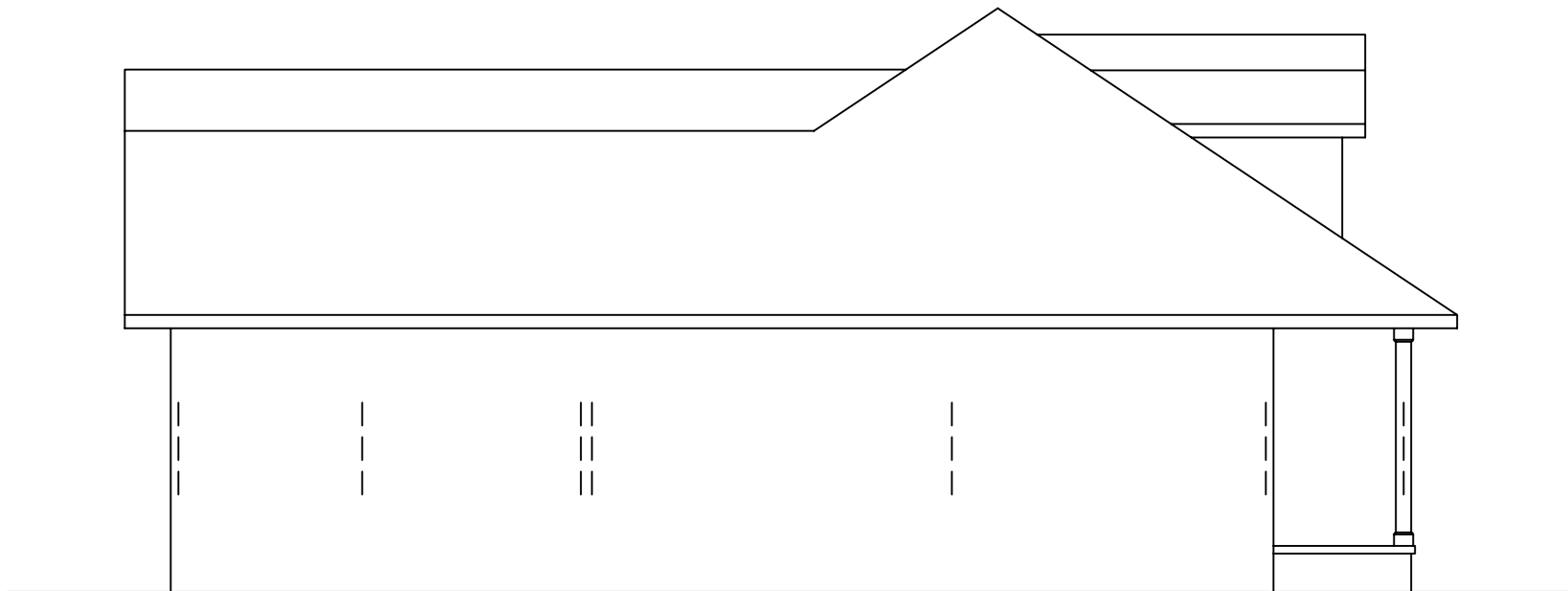
Decatur



EXCALIBUR
STEEL STRUCTURES
ExcaliburSteel.com
423-624-1047

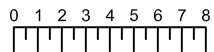


Front



Left

Decatur



Scale: 1/8" = 1'

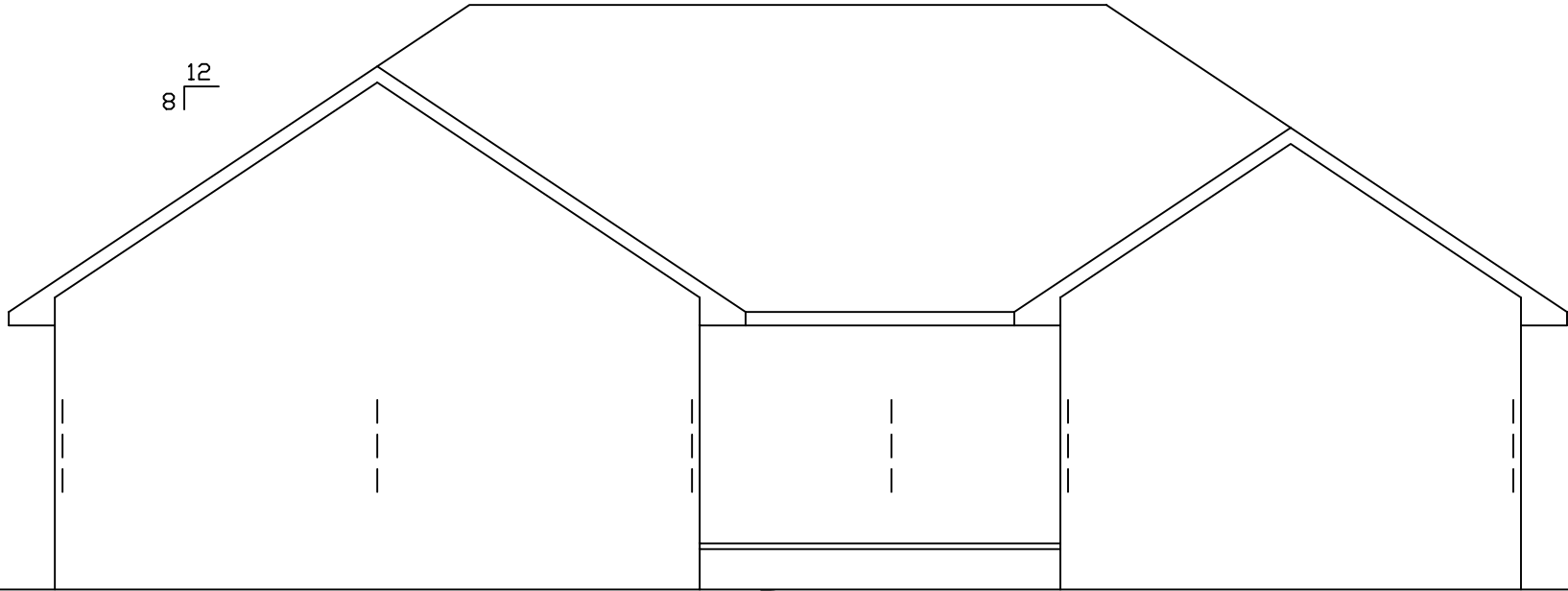


= COLUMN IN WALL

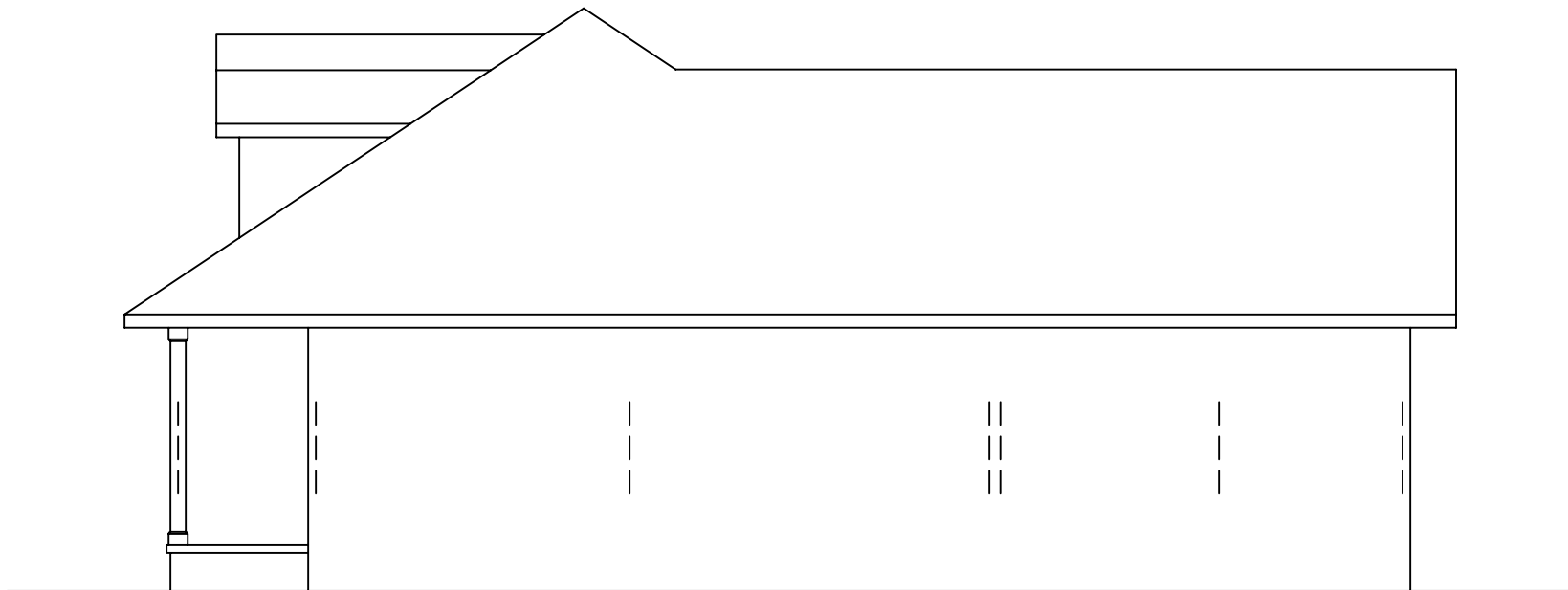


EXCALIBUR
STEEL STRUCTURES
ExcaliburSteel.com
423-624-1047

12
8

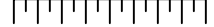


Rear



Right

0 1 2 3 4 5 6 7 8



Scale: 1/8" = 1'



= COLUMN IN WALL

Decatur



EXCALIBUR
STEEL STRUCTURES
ExcaliburSteel.com
423-624-1047