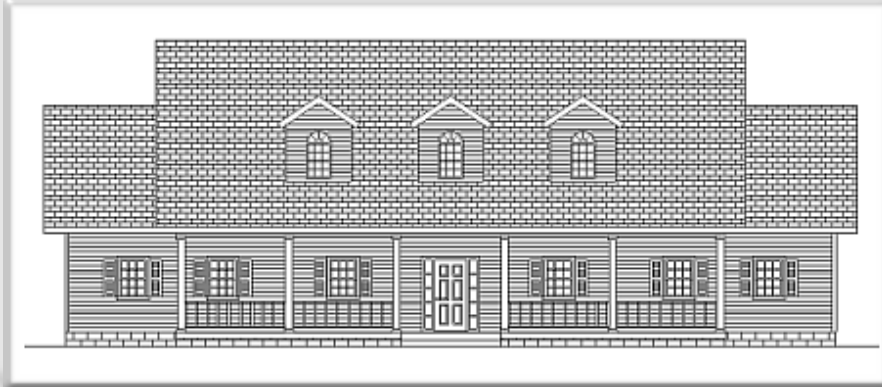




[← BACK](#)   [CONTENTS](#)   [NEXT →](#)

## Cleburne IV



Copyright© 1998 Excalibur Steel Structures of Tennessee, LLC.

### Specifications\*

Living Area, 1st Floor:	2,341 s.f.	Dimensions (Overall):	71'-4" x 48'-0"
Living Area, 2nd Floor:	n/a	Roof Pitch:	8/12
Utility:	126 s.f.	Ceiling Height, 1st Flr.:	9'
Garage:	n/a	Ceiling Height, 2nd Flr.:	n/a
Porch, Front:	405 s.f.	Bedrooms:	4
Porch, Rear:	180 s.f.	Baths:	2
<b>Total Area:</b>	<b>3,052 s.f.</b>	Fireplace:	n/a
Basement (optional):	2,140 s.f.	Standard Model Price:	<a href="#">Price List</a>



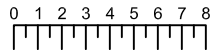
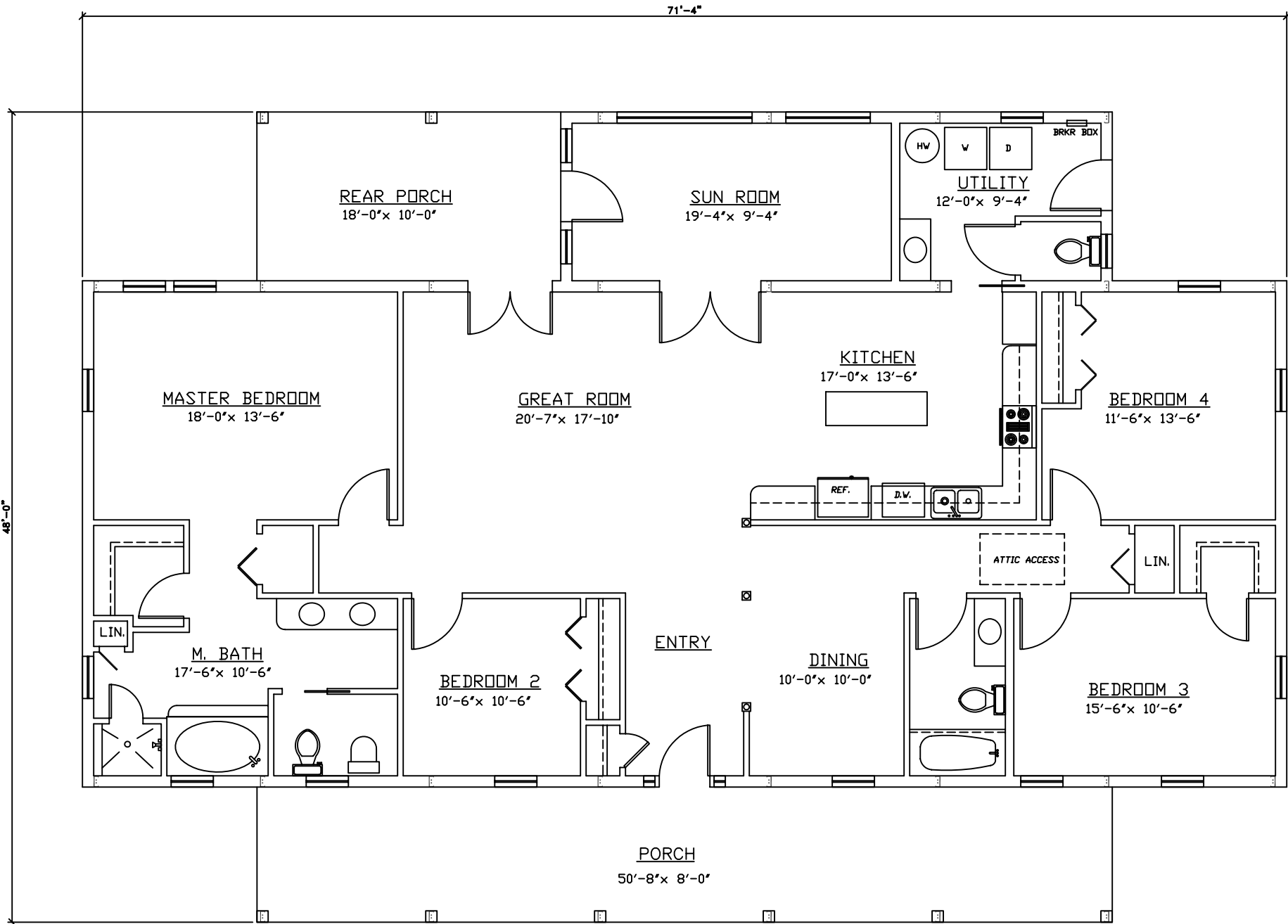
[Help/info](#)

<a href="#">Front/ Left Elevation</a>	<a href="#">Rear/ Right Elevation</a>
<a href="#">1st Floor Plan</a>	<a href="#">2nd Floor Plan</a>

\*Values are approximate



[RETURN TO HOME PAGE](#)



Scale: 1/8" = 1'

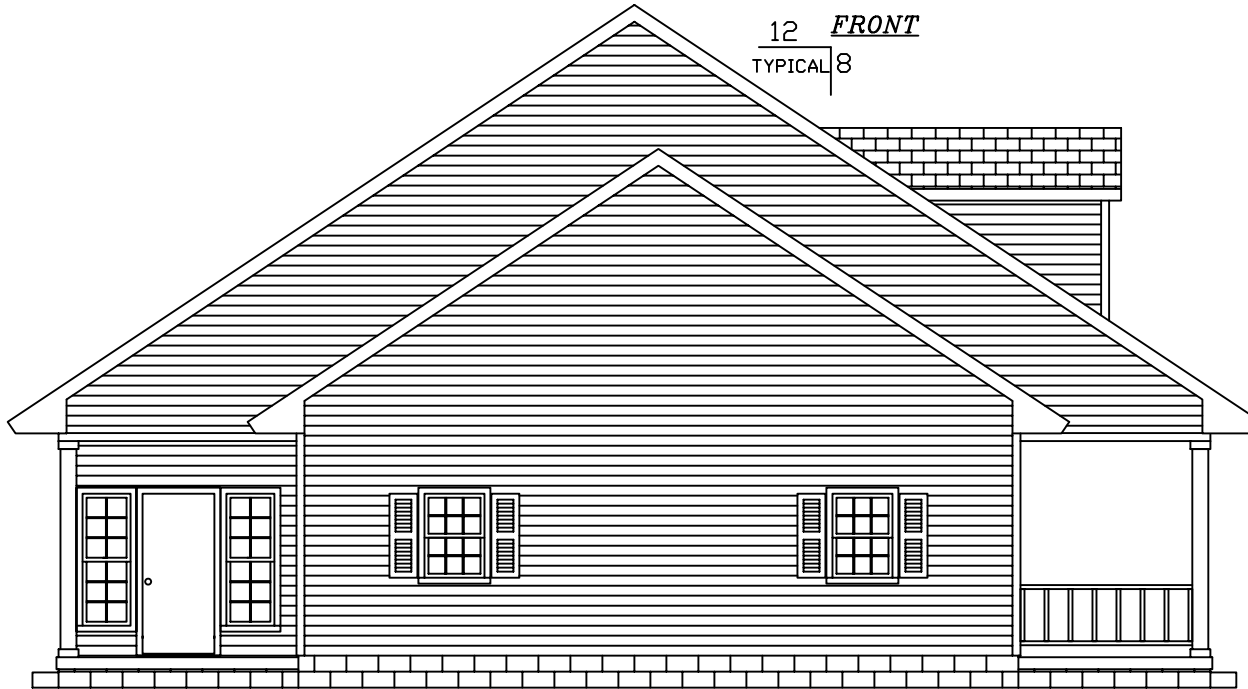
**Cleburne IV**



EXCALIBUR  
STEEL STRUCTURES  
ExcaliburSteel.com  
423-624-1047

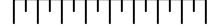


12 *FRONT*  
TYPICAL 8



*LEFT*

0 1 2 3 4 5 6 7 8



Scale: 1/8" = 1'

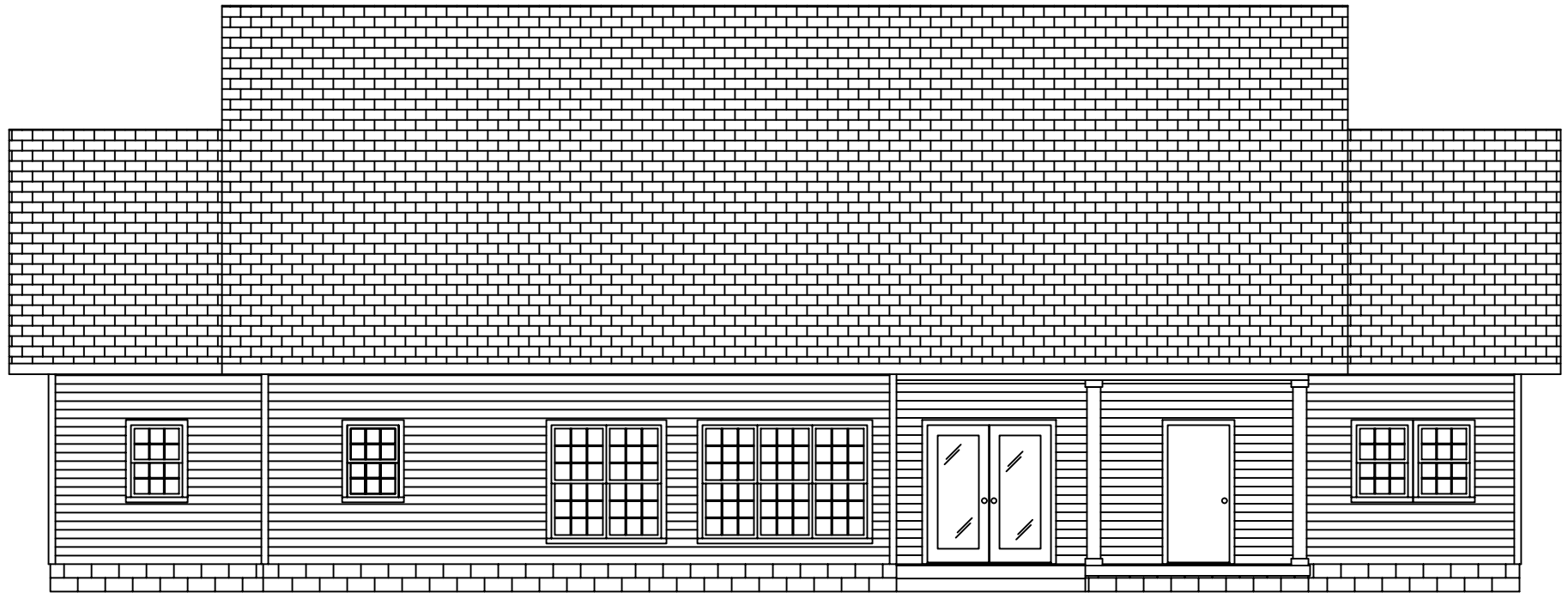


= COLUMN IN WALL

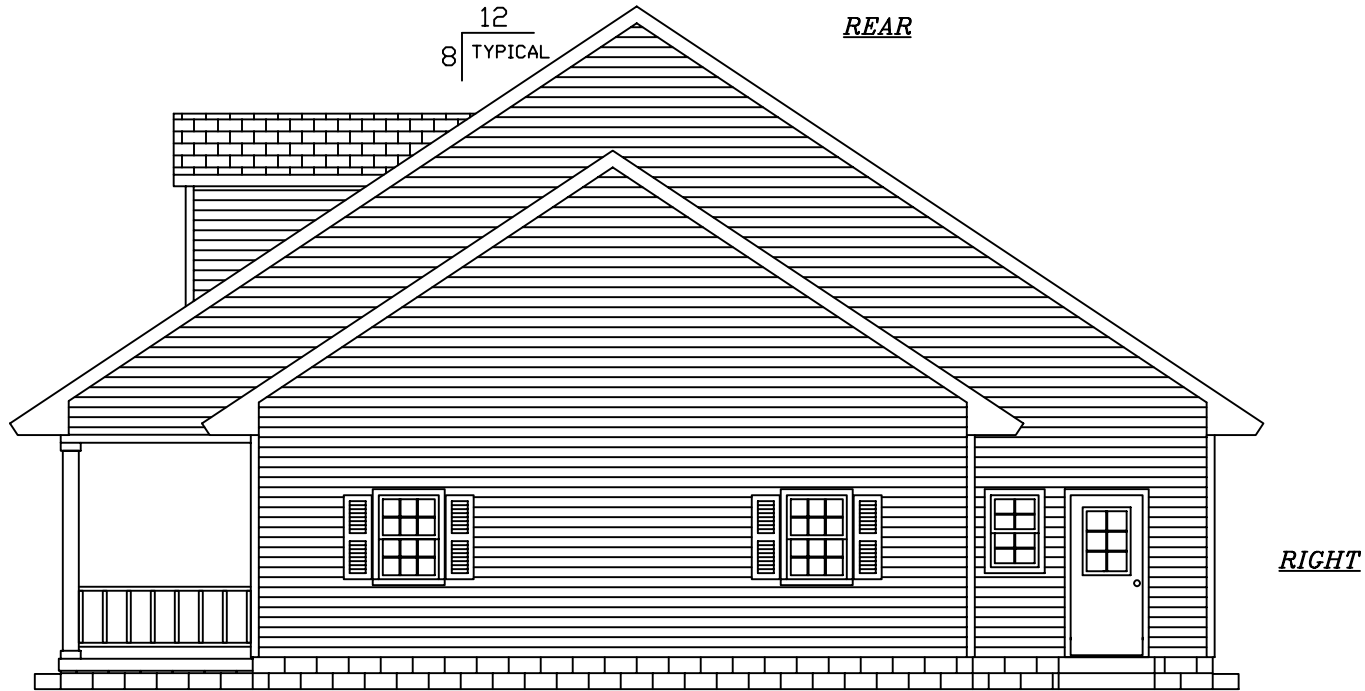
**Cleburne IV**



EXCALIBUR  
STEEL STRUCTURES  
ExcaliburSteel.com  
423-624-1047

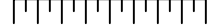


12  
8 TYPICAL *REAR*



*RIGHT*

0 1 2 3 4 5 6 7 8



Scale: 1/8" = 1'

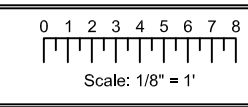
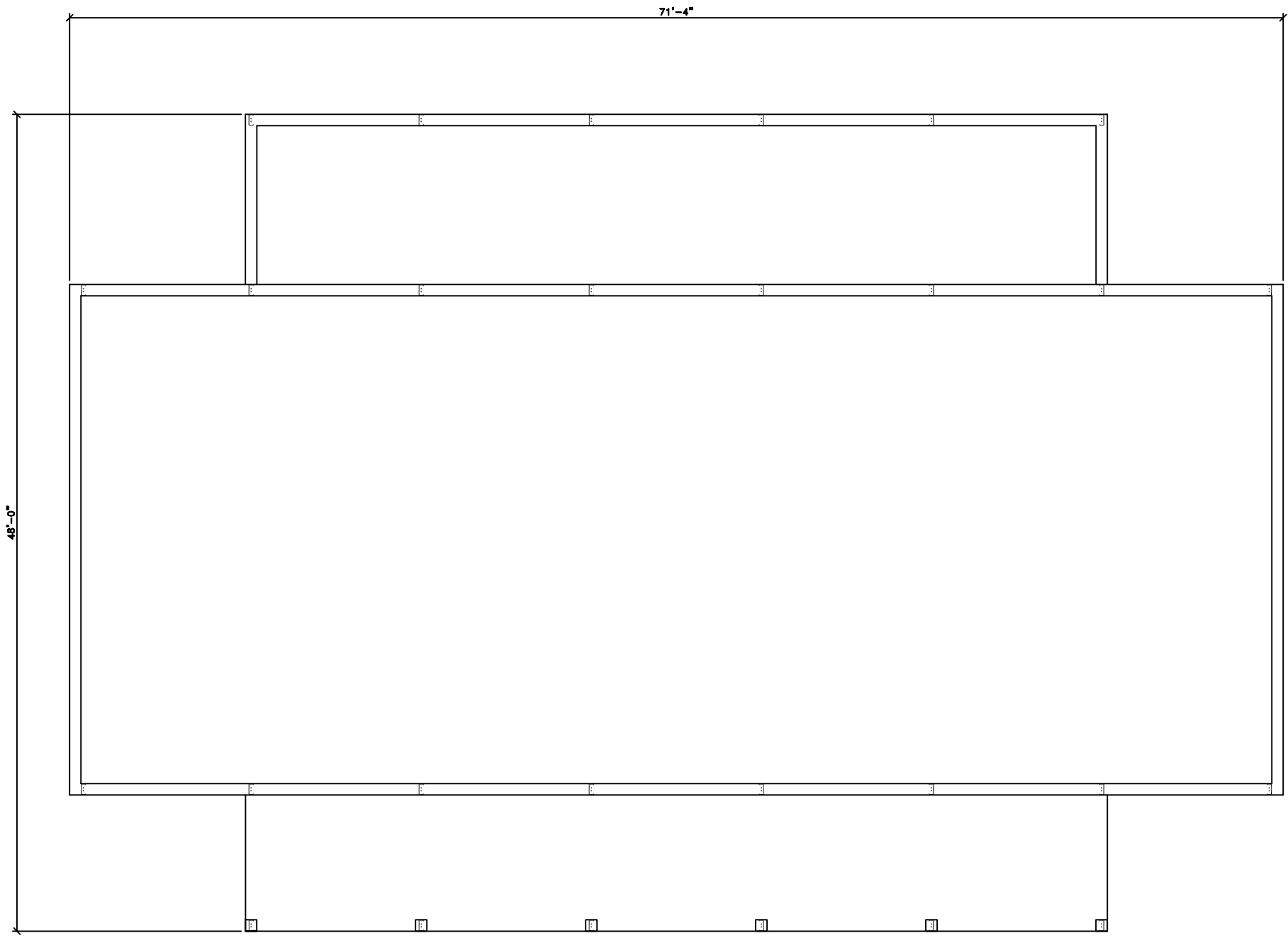


= COLUMN IN WALL

**Cleburne IV**

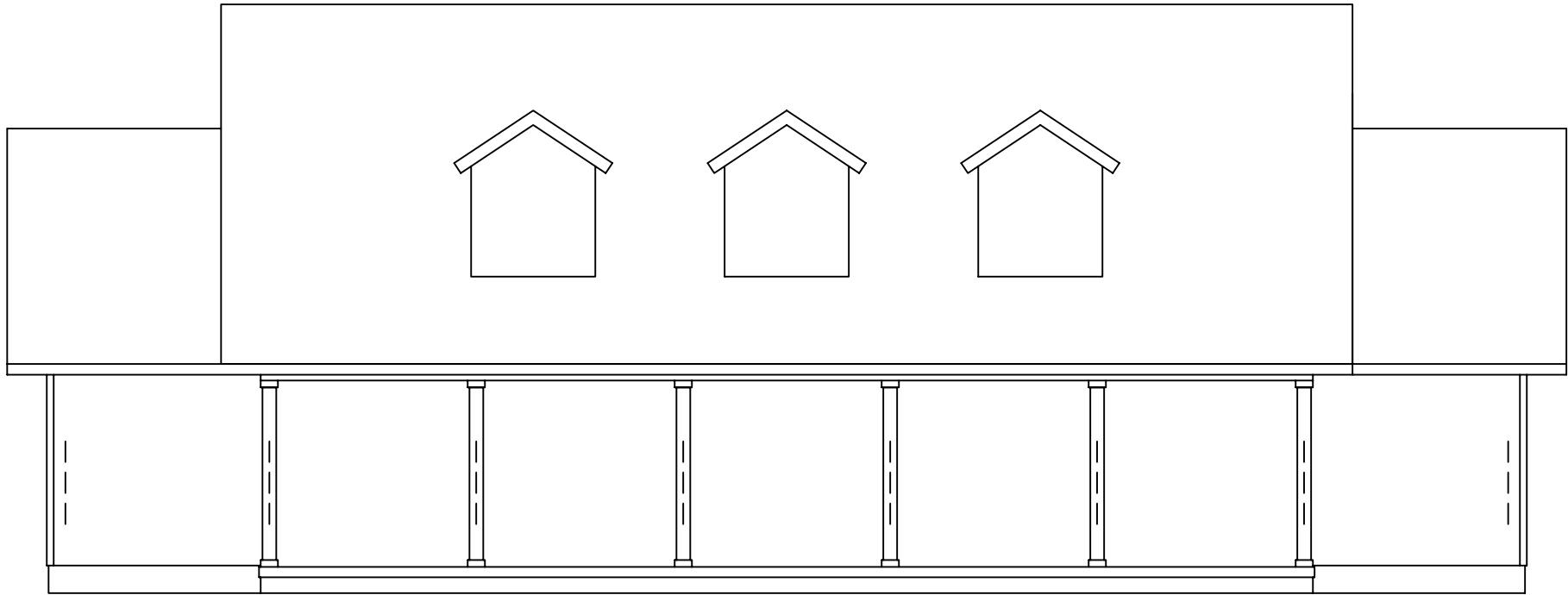


EXCALIBUR  
STEEL STRUCTURES  
ExcaliburSteel.com  
423-624-1047

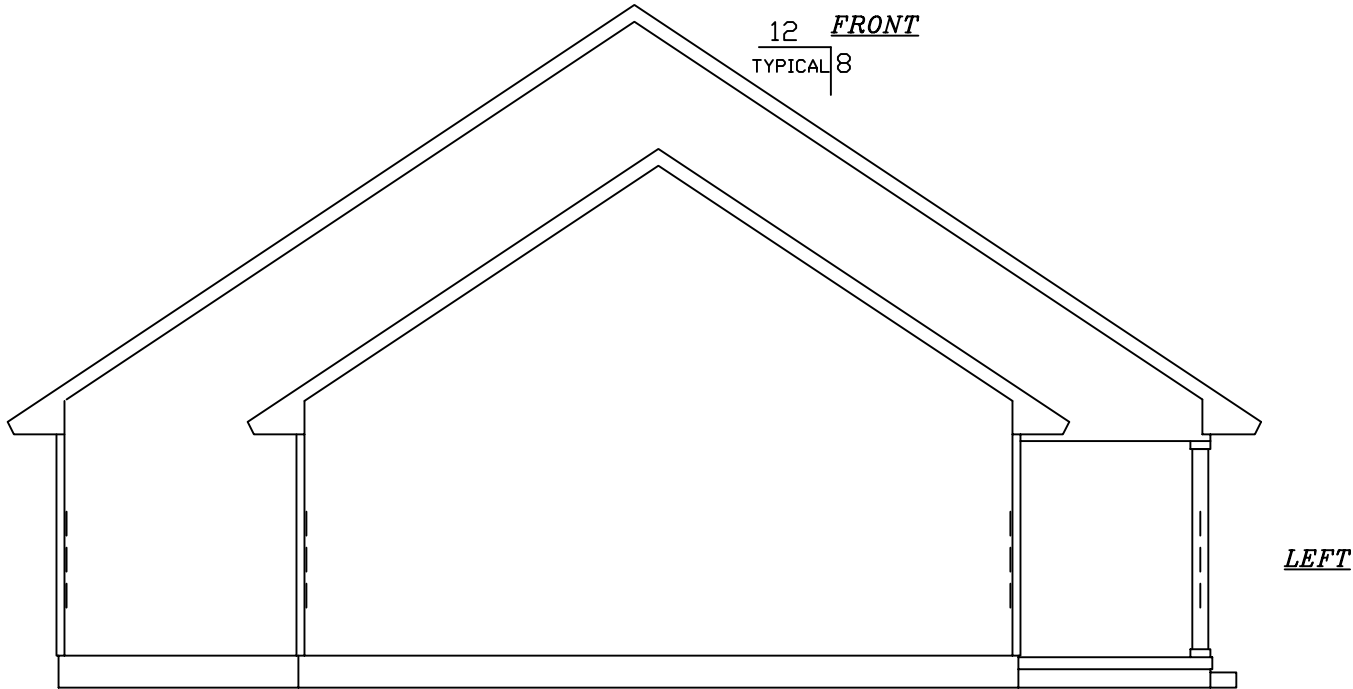


**Cleburne IV**

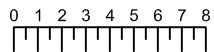
EXCALIBUR  
STEEL STRUCTURES  
ExcaliburSteel.com  
423-624-1047



12 *FRONT*  
TYPICAL 8



*LEFT*



Scale: 1/8" = 1'

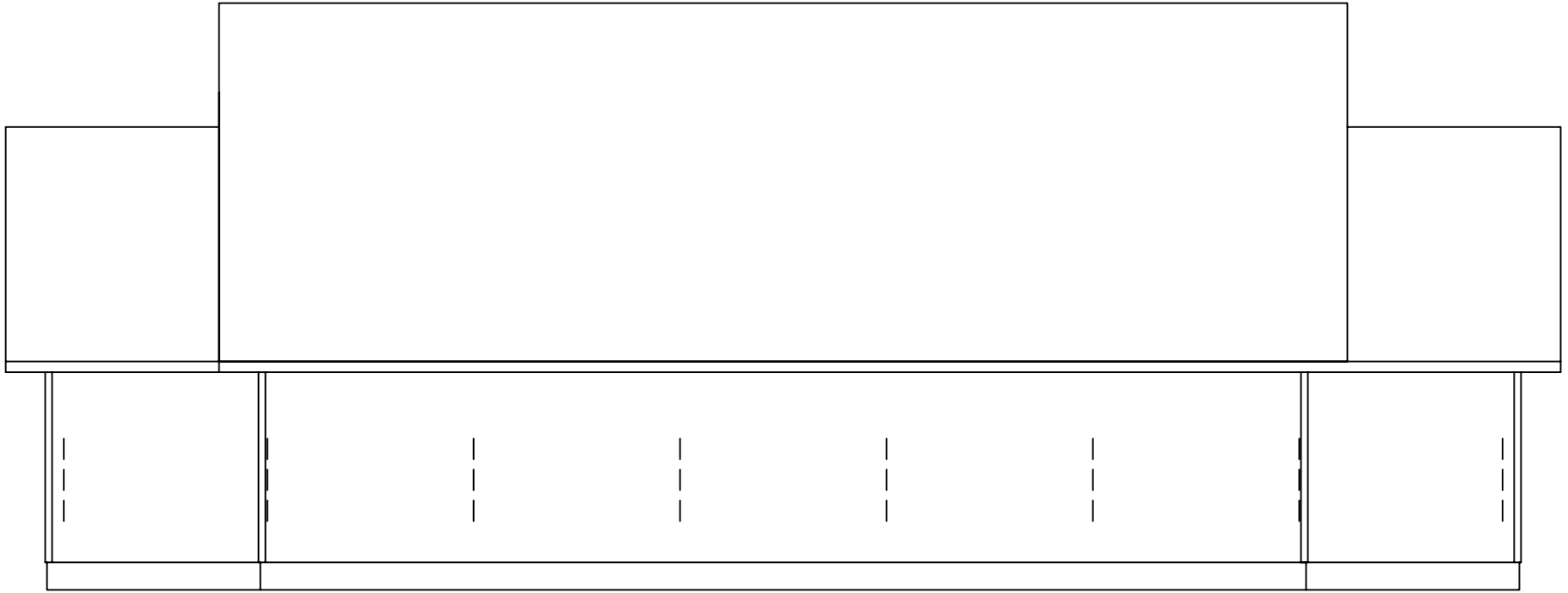


= COLUMN IN WALL

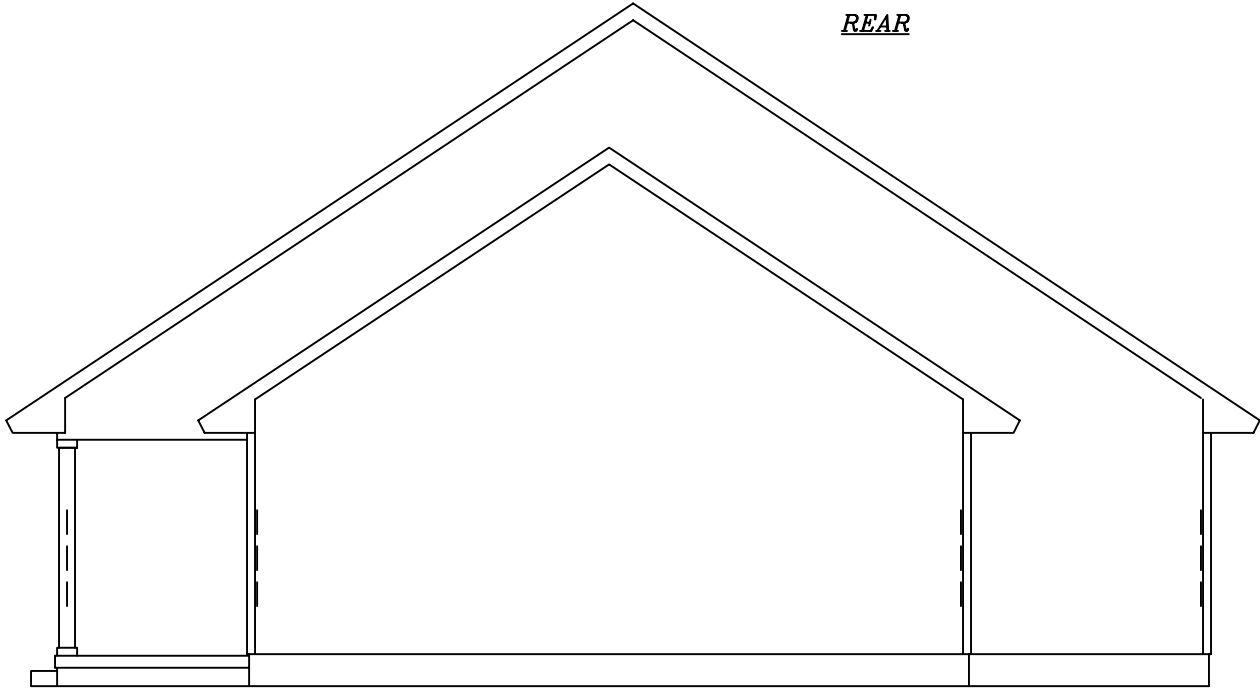
**Cleburne IV**



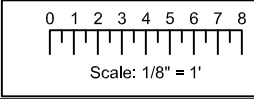
EXCALIBUR  
STEEL STRUCTURES  
ExcaliburSteel.com  
423-624-1047



*REAR*



*RIGHT*



 = COLUMN IN WALL

**Cleburne IV**



EXCALIBUR  
STEEL STRUCTURES  
ExcaliburSteel.com  
423-624-1047