



[← BACK](#) [CONTENTS](#) [NEXT →](#)

Cleburne III



Copyright© 1998 Excalibur Steel Structures of Tennessee, LLC.

Specifications*

Living Area, 1st Floor:	2,422 s.f.	Dimensions (Overall):	71'-4" x 48'-0"
Living Area, 2nd Floor:	n/a	Roof Pitch:	6/12
Utility:	26 s.f.	Ceiling Height, 1st Flr.:	8'
Garage:	n/a	Ceiling Height, 2nd Flr.:	n/a
Porch, Front:	405 s.f.	Bedrooms:	4
Porch, Rear:	200 s.f.	Baths:	2
Total Area:	3,053 s.f.	Fireplace:	1
Basement (optional):	2,140 s.f.	Standard Model Price:	Price List



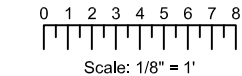
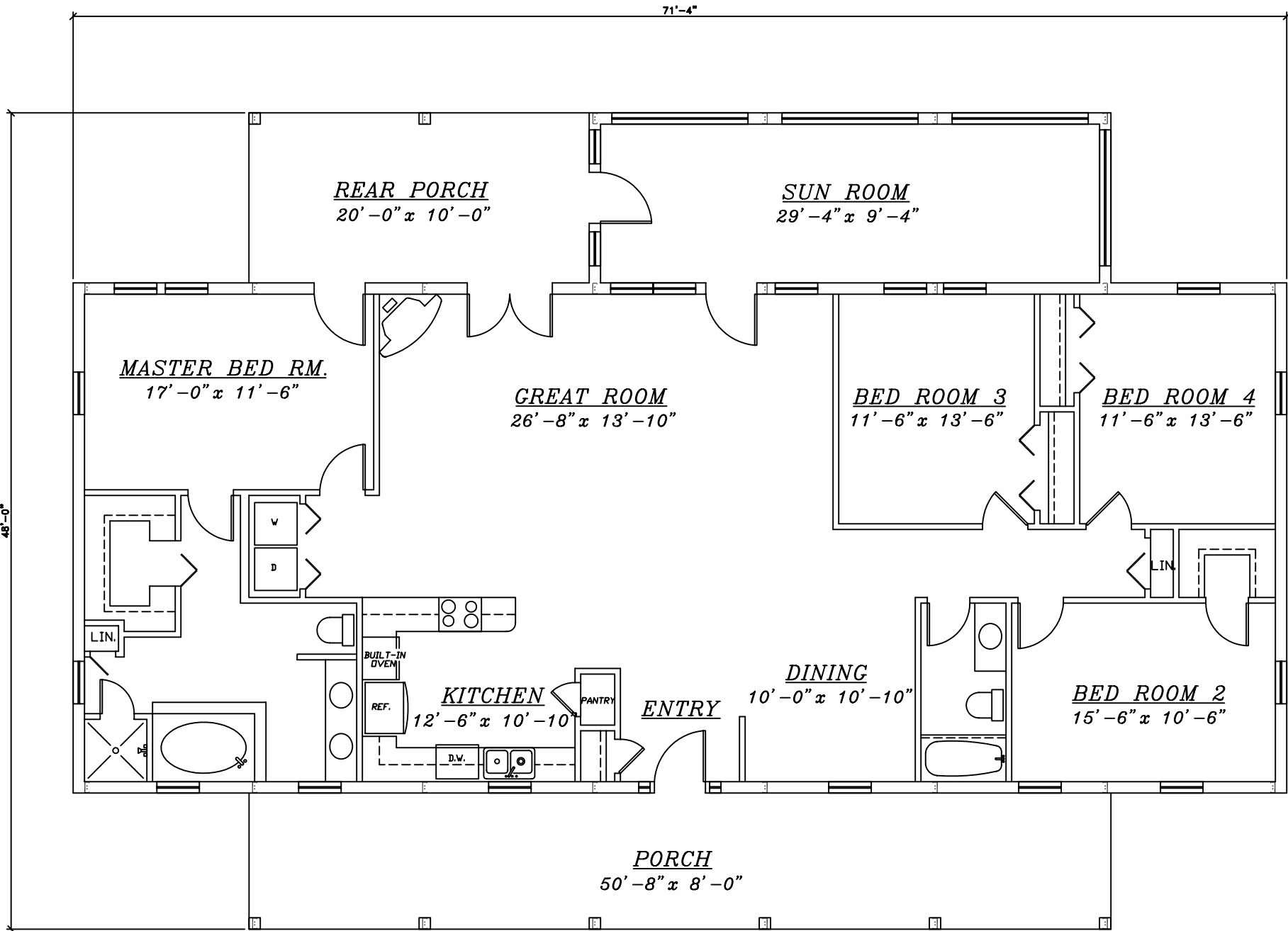
[Help/info](#)

Front/ Left Elevation	Rear/ Right Elevation
1st Floor Plan	2nd Floor Plan

*Values are approximate



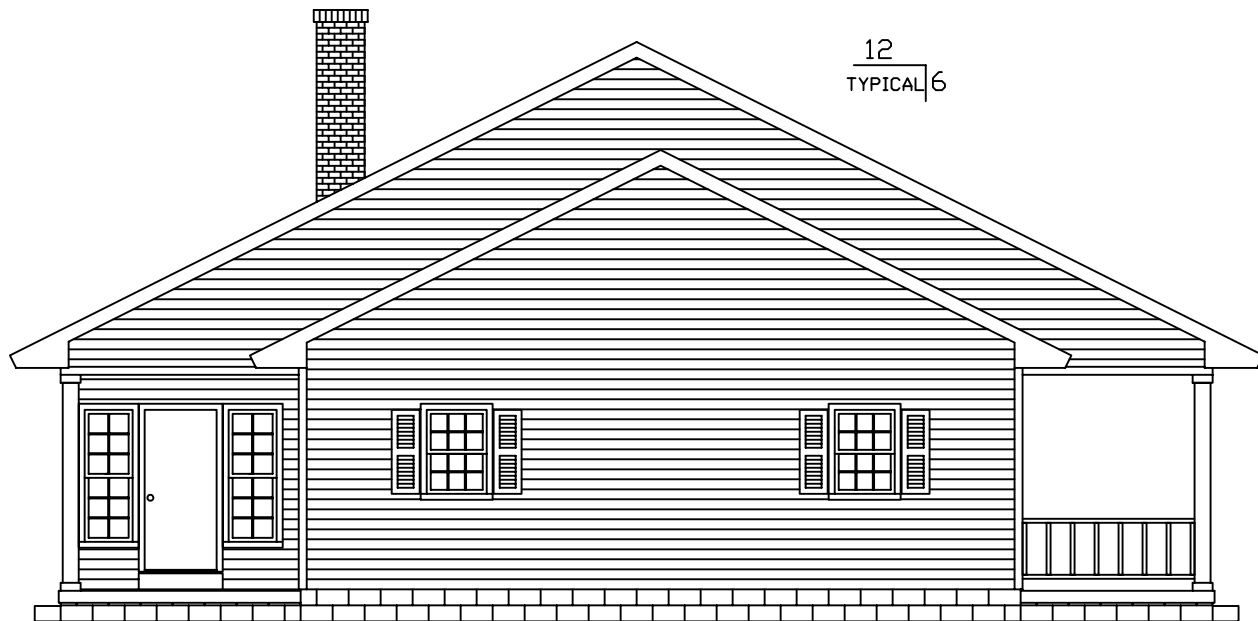
[RETURN TO HOME PAGE](#)



Cleburne III

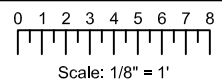


FRONT



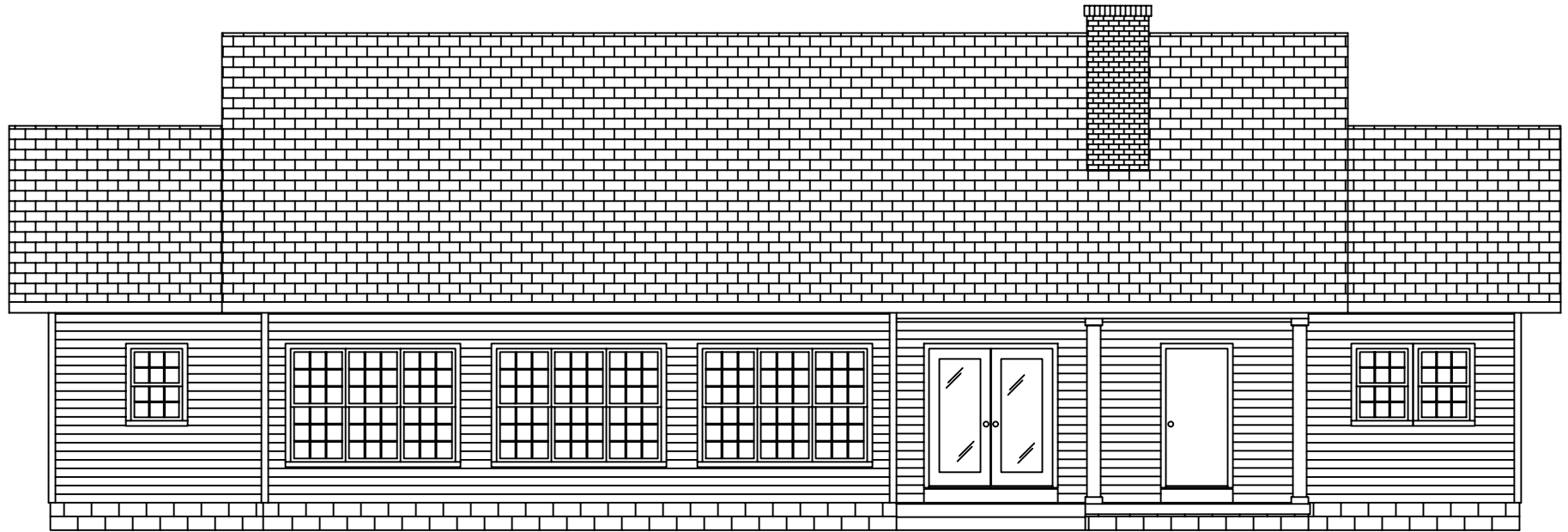
12
TYPICAL 6

LEFT



— = COLUMN IN WALL

Cleburne III

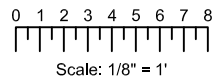


REAR



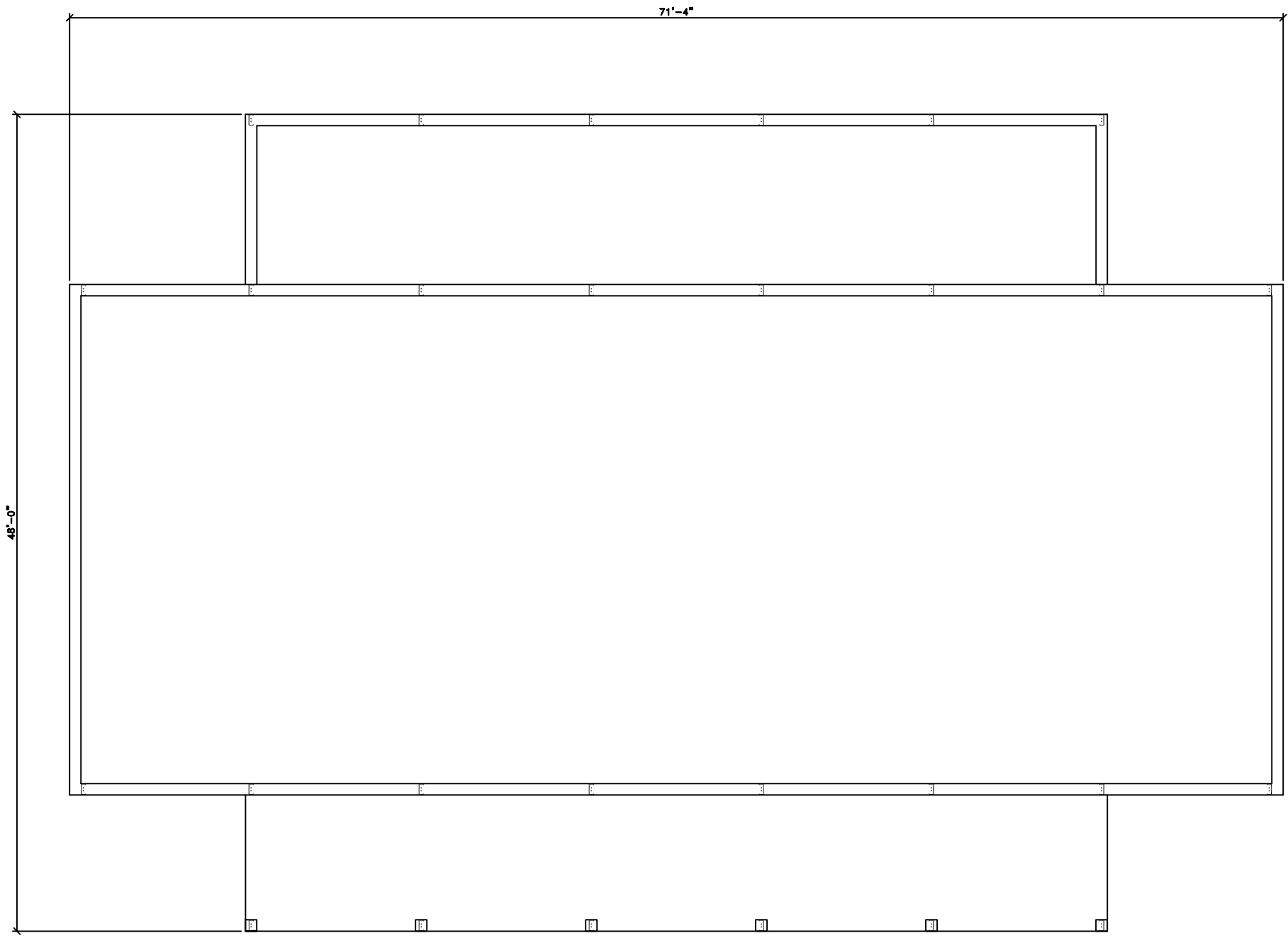
12
6 TYPICAL

RIGHT



 = COLUMN IN WALL

Cleburne III



0 1 2 3 4 5 6 7 8

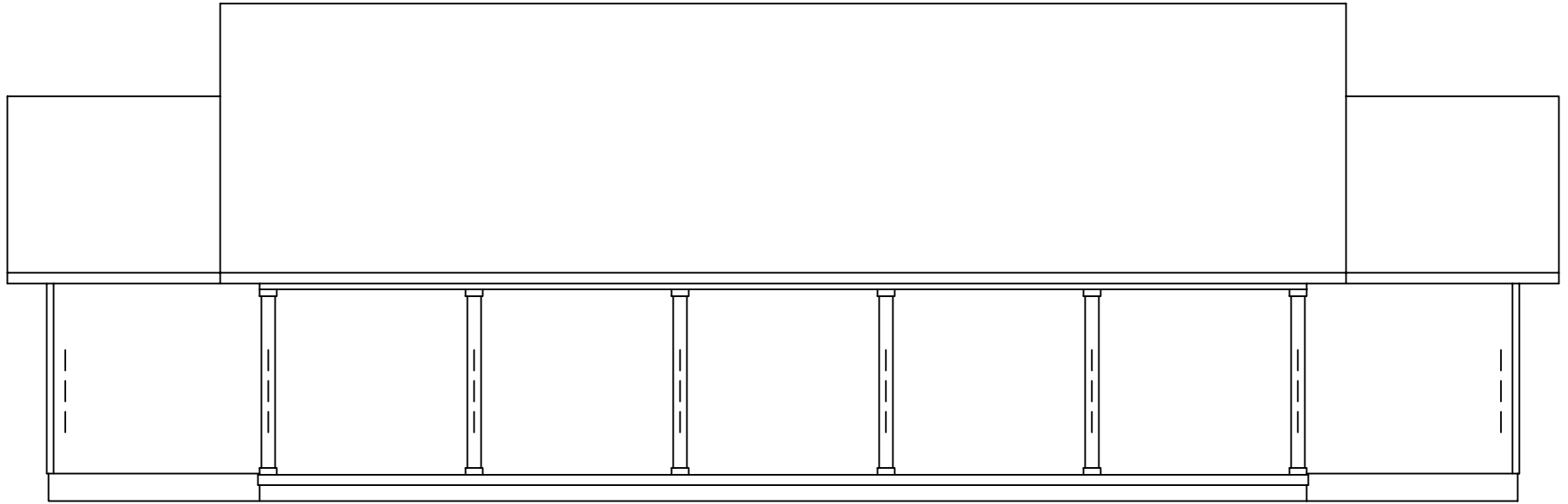


Scale: 1/8" = 1'

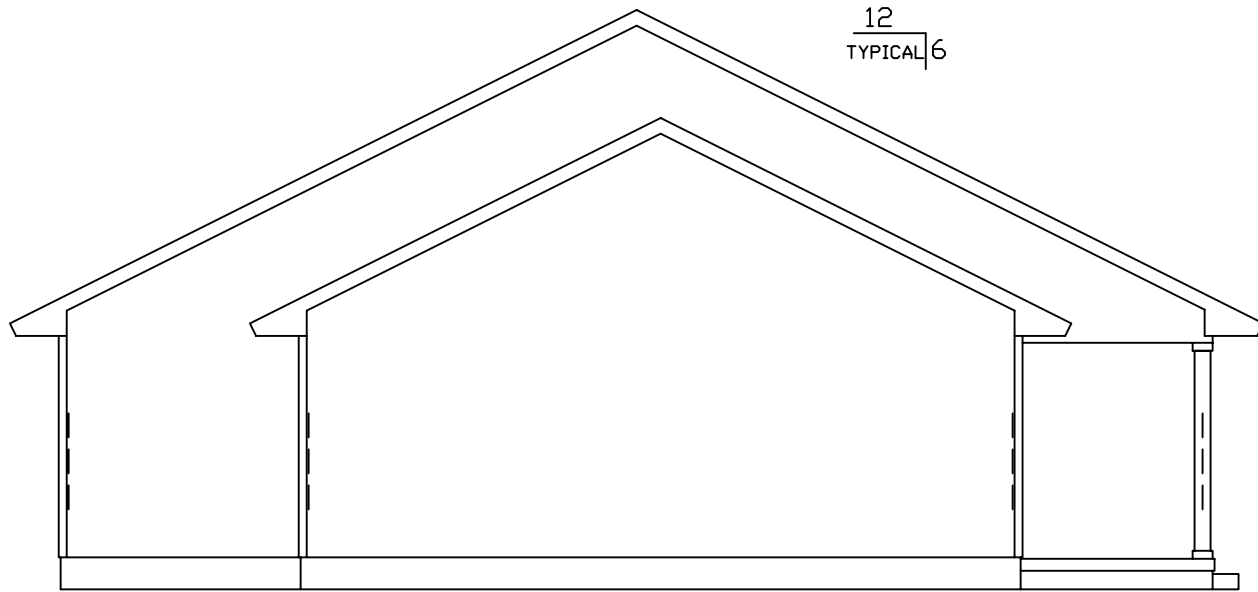
Cleburne III



EXCALIBUR
STEEL STRUCTURES
ExcaliburSteel.com
423-624-1047

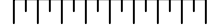


FRONT



LEFT

0 1 2 3 4 5 6 7 8



Scale: 1/8" = 1'

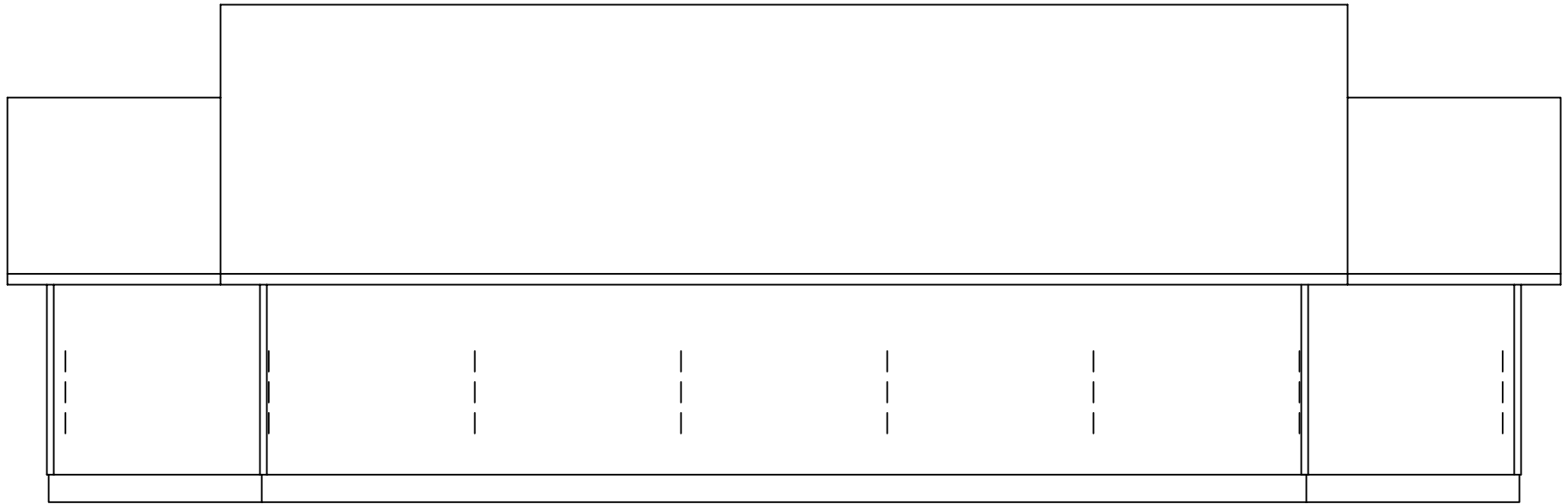


= COLUMN IN WALL

Cleburne III

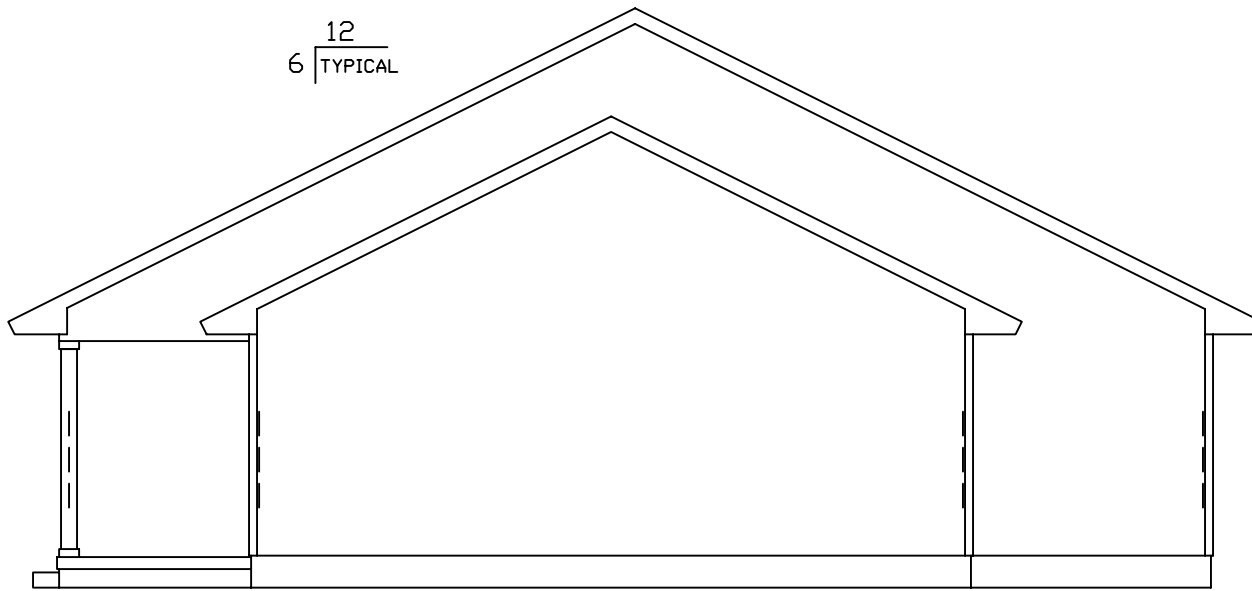


EXCALIBUR
STEEL STRUCTURES
ExcaliburSteel.com
423-624-1047

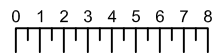


REAR

12
6 TYPICAL



RIGHT



Scale: 1/8" = 1'



= COLUMN IN WALL

Cleburne III



EXCALIBUR
STEEL STRUCTURES
ExcaliburSteel.com
423-624-1047