



[← BACK](#)   [CONTENTS](#)   [NEXT →](#)

## Cleburne II



Copyright© 1998 Excalibur Steel Structures of Tennessee, LLC.

### Specifications\*

|                         |                   |                           |                            |
|-------------------------|-------------------|---------------------------|----------------------------|
| Living Area, 1st Floor: | 2,030 s.f.        | Dimensions (Overall):     | 61'-4" x 48'-0"            |
| Living Area, 2nd Floor: | n/a               | Roof Pitch:               | 6/12                       |
| Utility:                | 26 s.f.           | Ceiling Height, 1st Flr.: | 8'                         |
| Garage:                 | n/a               | Ceiling Height, 2nd Flr.: | n/a                        |
| Porch, Front:           | 325 s.f.          | Bedrooms:                 | 3                          |
| Porch, Rear:            | 200 s.f.          | Baths:                    | 2                          |
| <b>Total Area:</b>      | <b>2,581 s.f.</b> | Fireplace:                | 1                          |
| Basement (optional):    | 1,840 s.f.        | Standard Model Price:     | <a href="#">Price List</a> |



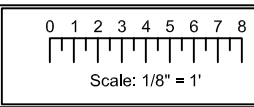
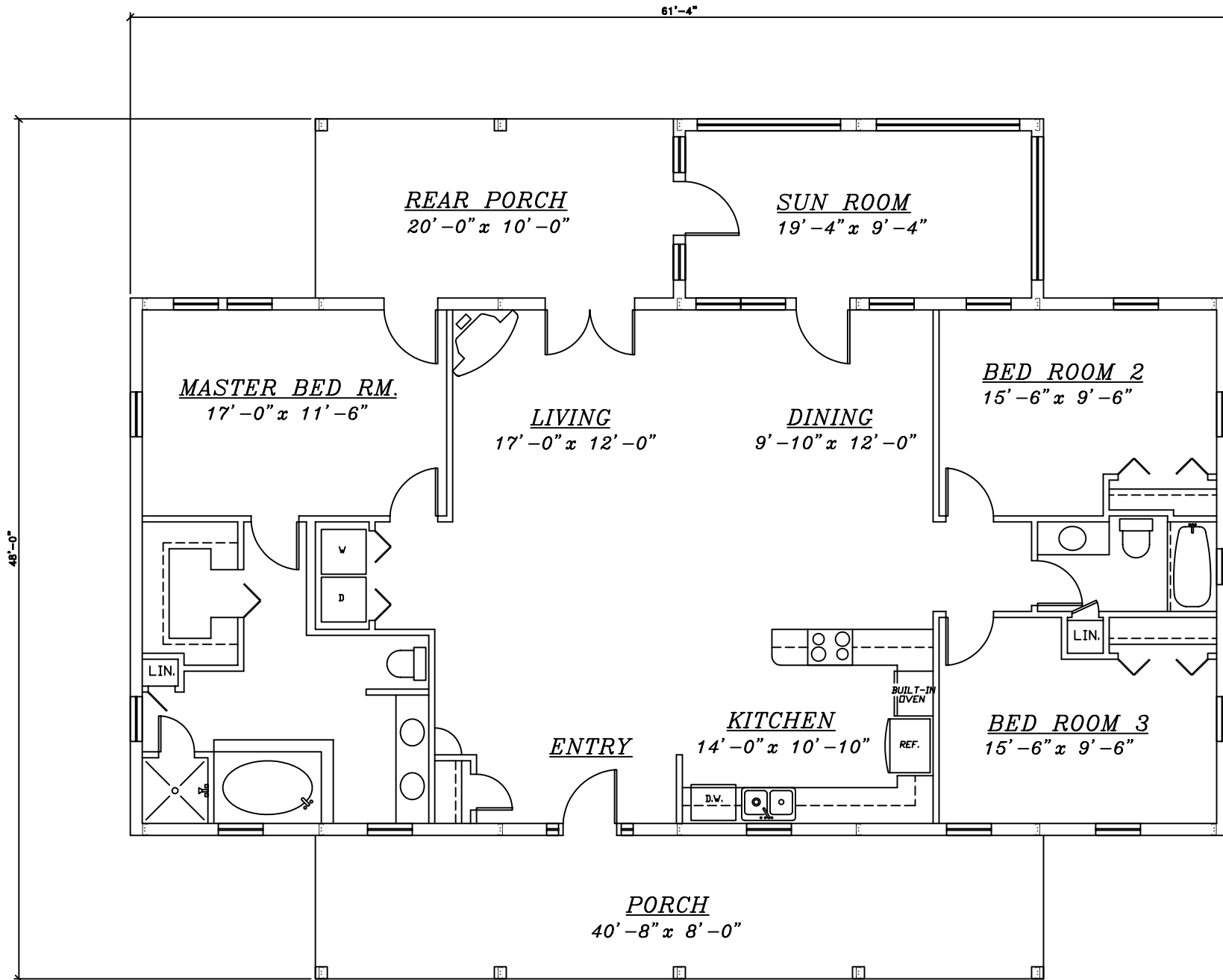
[Help/info](#)

|                                       |                                       |
|---------------------------------------|---------------------------------------|
| <a href="#">Front/ Left Elevation</a> | <a href="#">Rear/ Right Elevation</a> |
| <a href="#">1st Floor Plan</a>        | <a href="#">2nd Floor Plan</a>        |

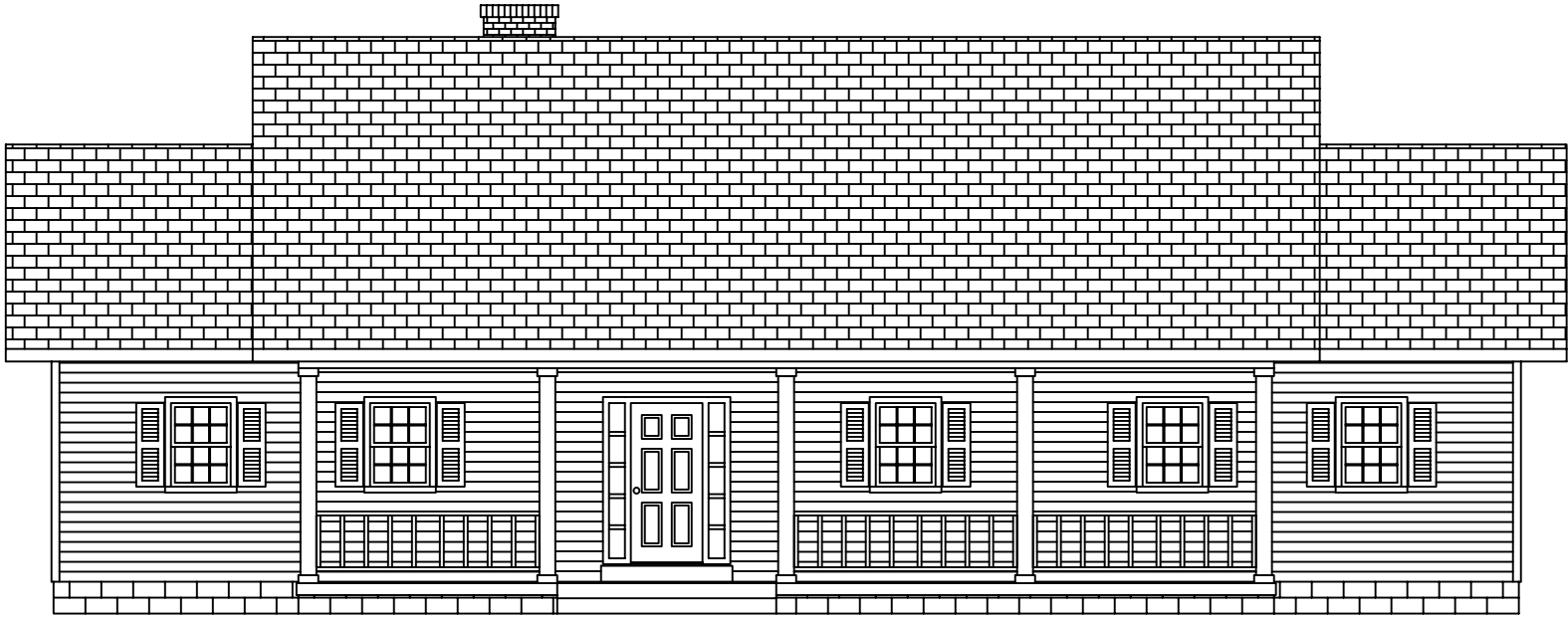
\*Values are approximate



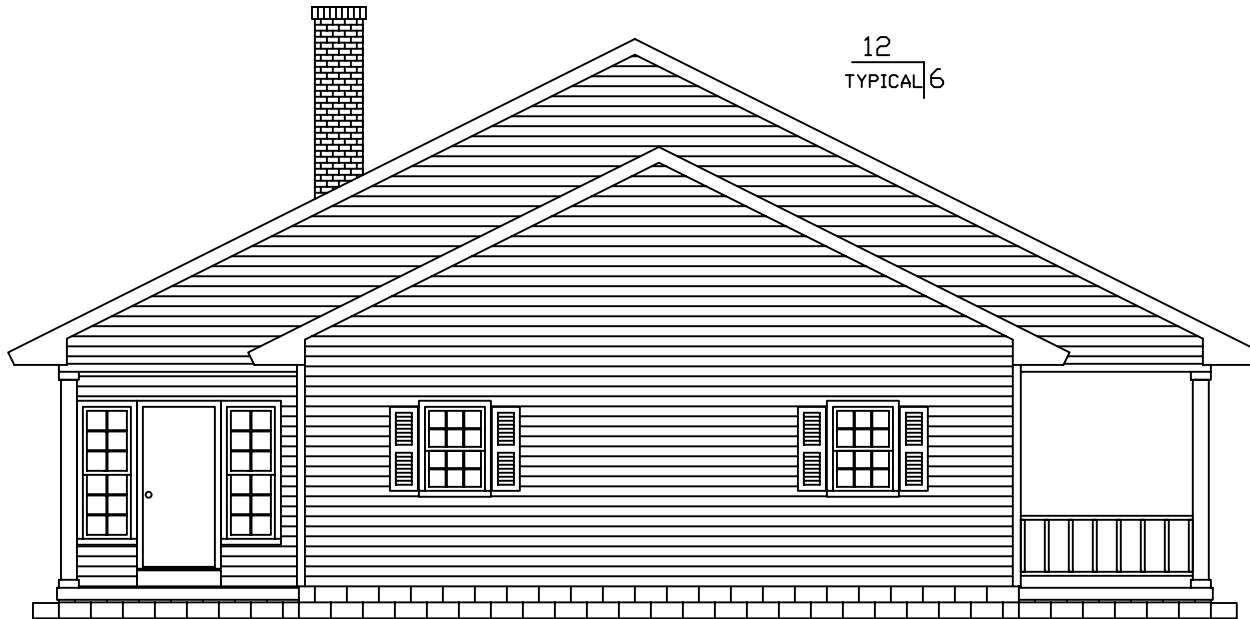
[RETURN TO HOME PAGE](#)



**Cleburne II**



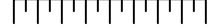
*FRONT*



12  
TYPICAL 6

*LEFT*

0 1 2 3 4 5 6 7 8



Scale: 1/8" = 1'



= COLUMN IN WALL

**Cleburne II**



EXCALIBUR  
STEEL STRUCTURES  
ExcaliburSteel.com  
423-624-1047



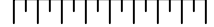
*REAR*



$\frac{12}{6}$  TYPICAL

*RIGHT*

0 1 2 3 4 5 6 7 8



Scale: 1/8" = 1'

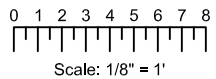
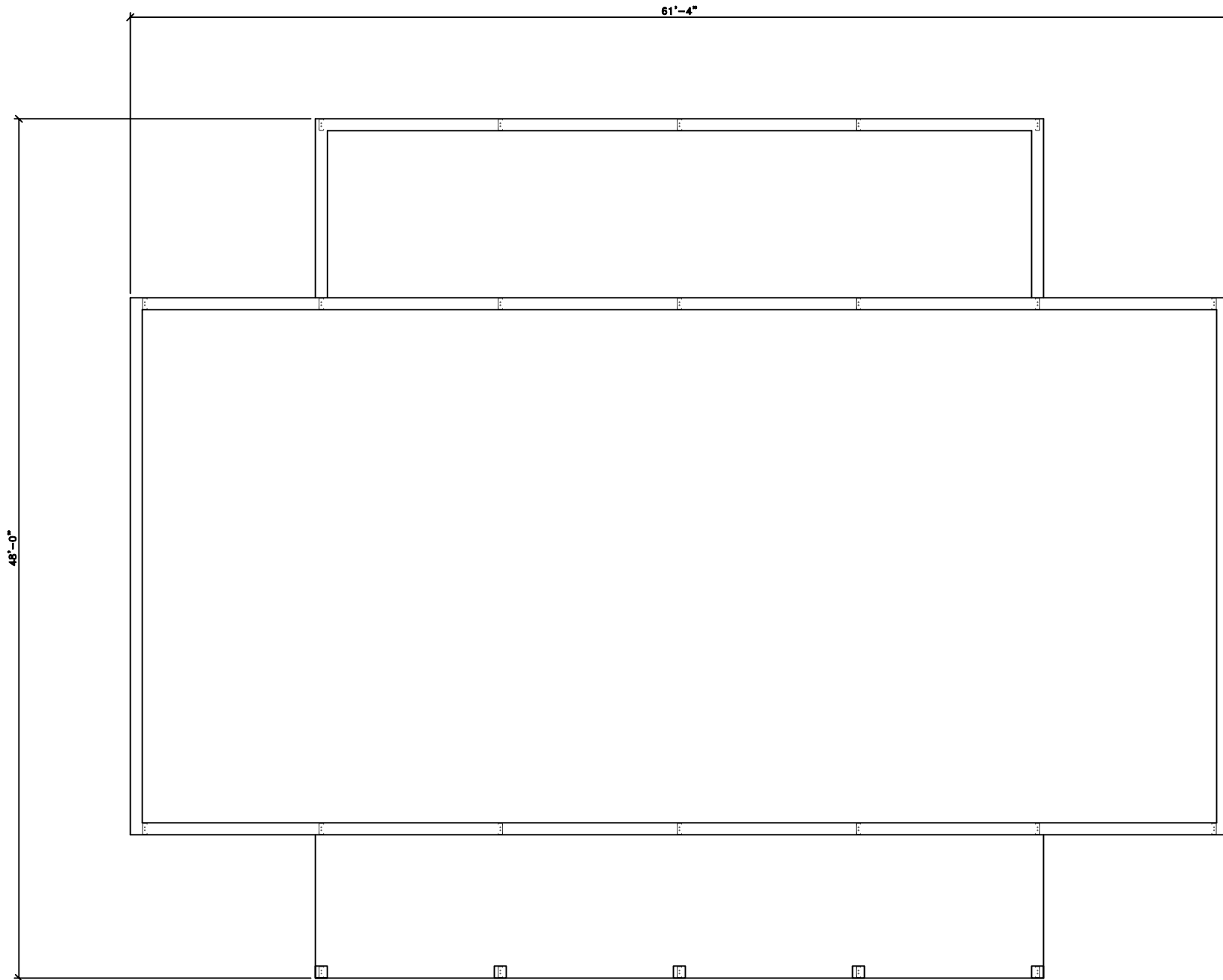


= COLUMN IN WALL

**Cleburne II**



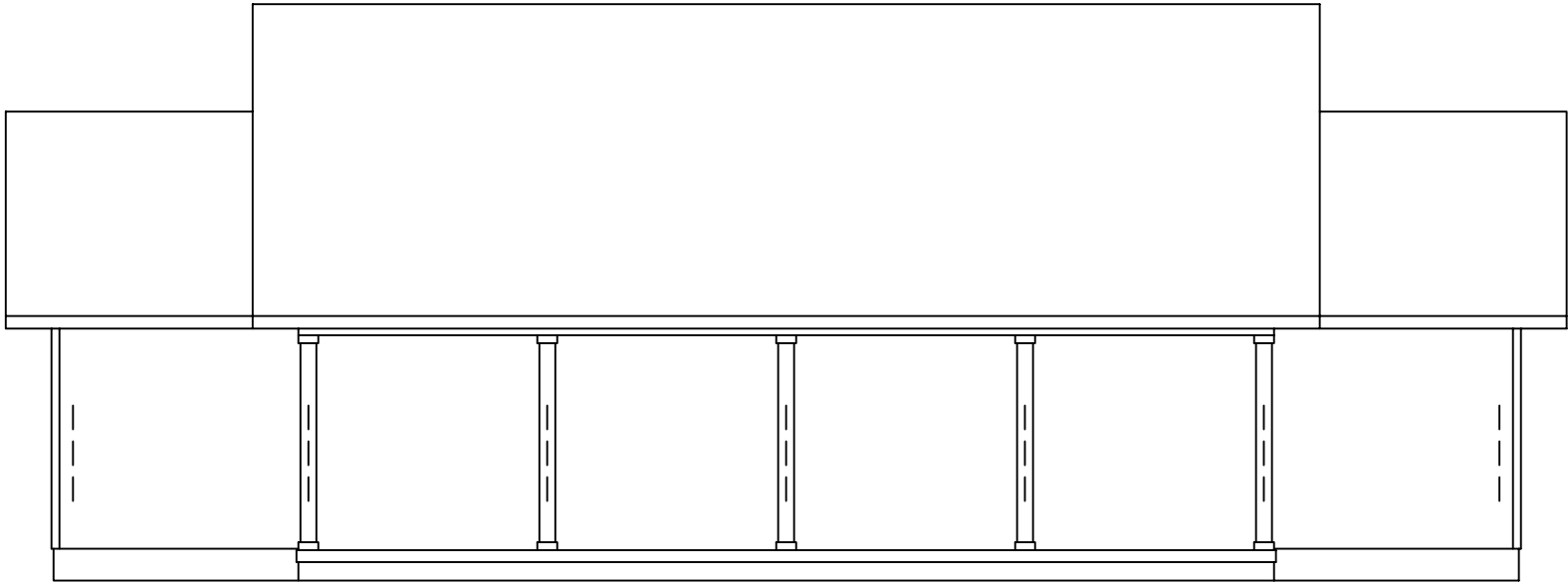
EXCALIBUR  
STEEL STRUCTURES  
ExcaliburSteel.com  
423-624-1047



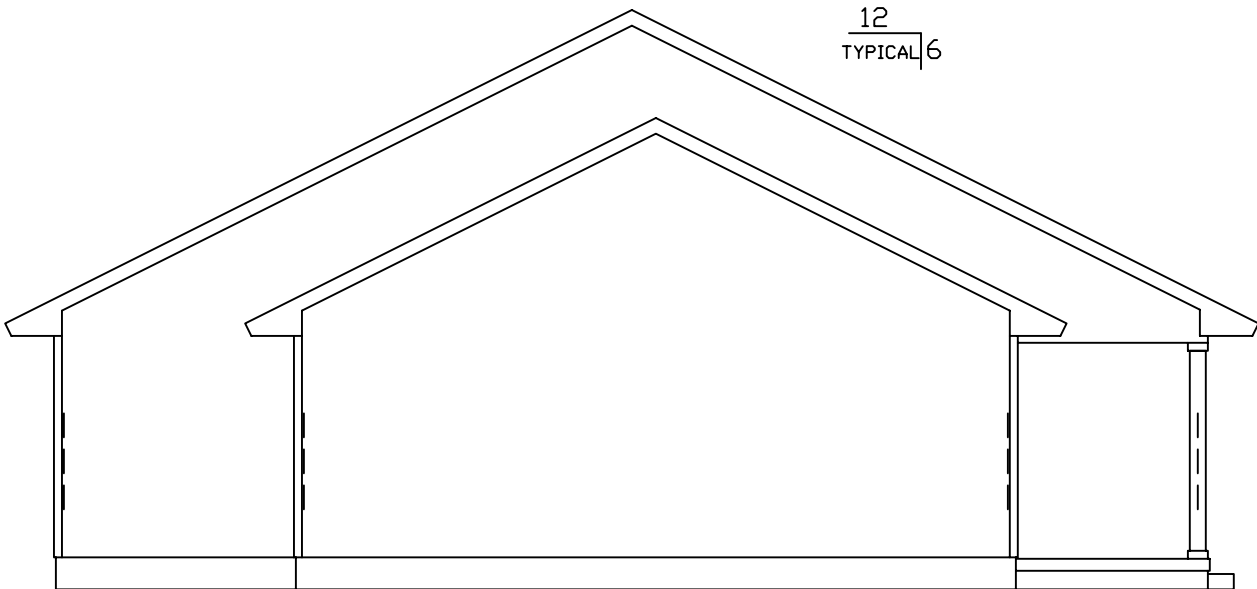
**Cleburne II**



EXCALIBUR  
STEEL STRUCTURES  
ExcaliburSteel.com  
423-624-1047

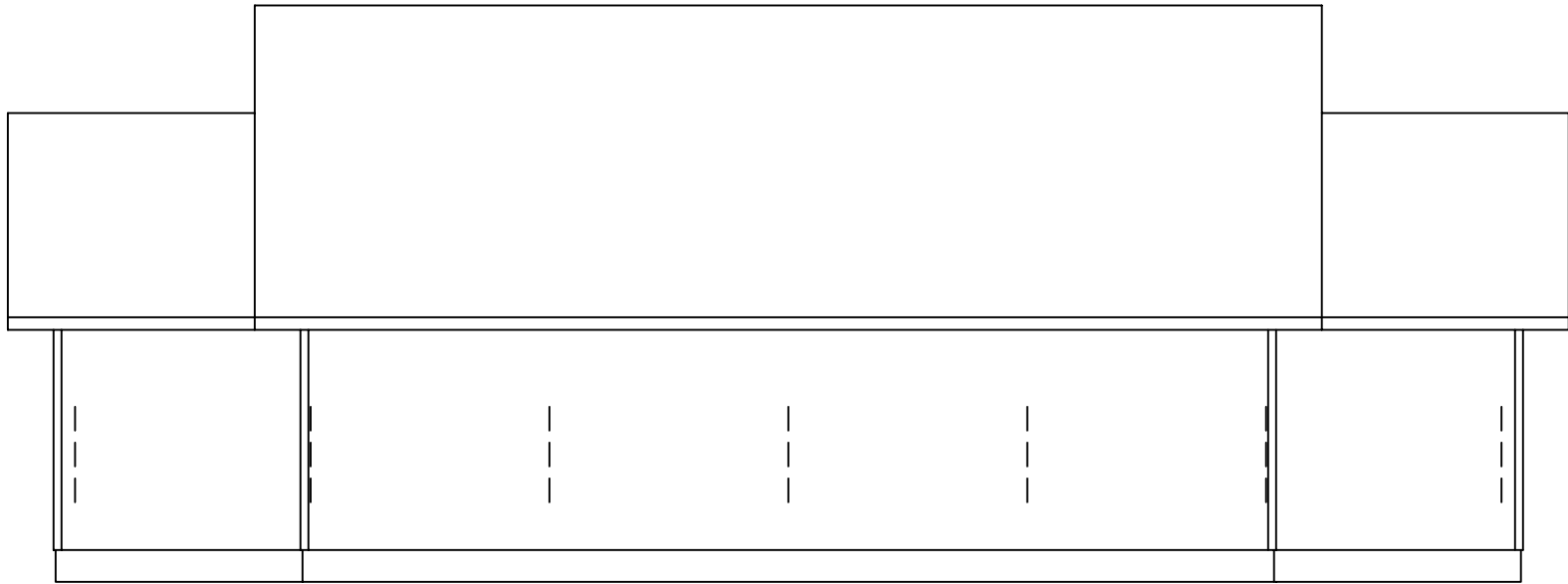


FRONT



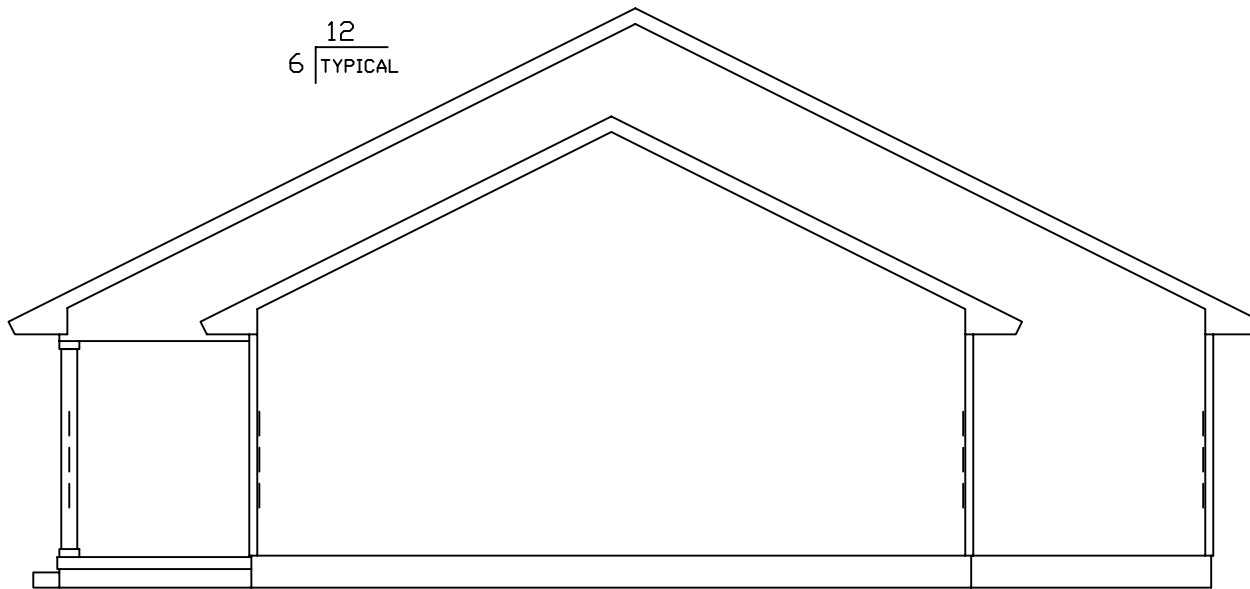
12  
TYPICAL 6

LEFT



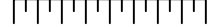
***REAR***

12  
6 TYPICAL



***RIGHT***

0 1 2 3 4 5 6 7 8



Scale: 1/8" = 1'



= COLUMN IN WALL

**Cleburne II**



EXCALIBUR  
STEEL STRUCTURES  
ExcilburSteel.com  
423-624-1047