



[← BACK](#) [CONTENTS](#) [NEXT →](#)

Cleburne I



Copyright© 1998 Excalibur Steel Structures of Tennessee, LLC.

Specifications*

Living Area, 1st Floor:	1,721 s.f.	Dimensions (Overall):	51'-4" x 48'-0"
Living Area, 2nd Floor:	n/a	Roof Pitch:	6/12
Utility:	26 s.f.	Ceiling Height, 1st Flr.:	8'
Garage:	n/a	Ceiling Height, 2nd Flr.:	n/a
Porch, Front:	245 s.f.	Bedrooms:	3
Porch, Rear:	100 s.f.	Baths:	2
Total Area:	2,092 s.f.	Fireplace:	1
Basement (optional):	1,540 s.f.	Standard Model Price:	Price List



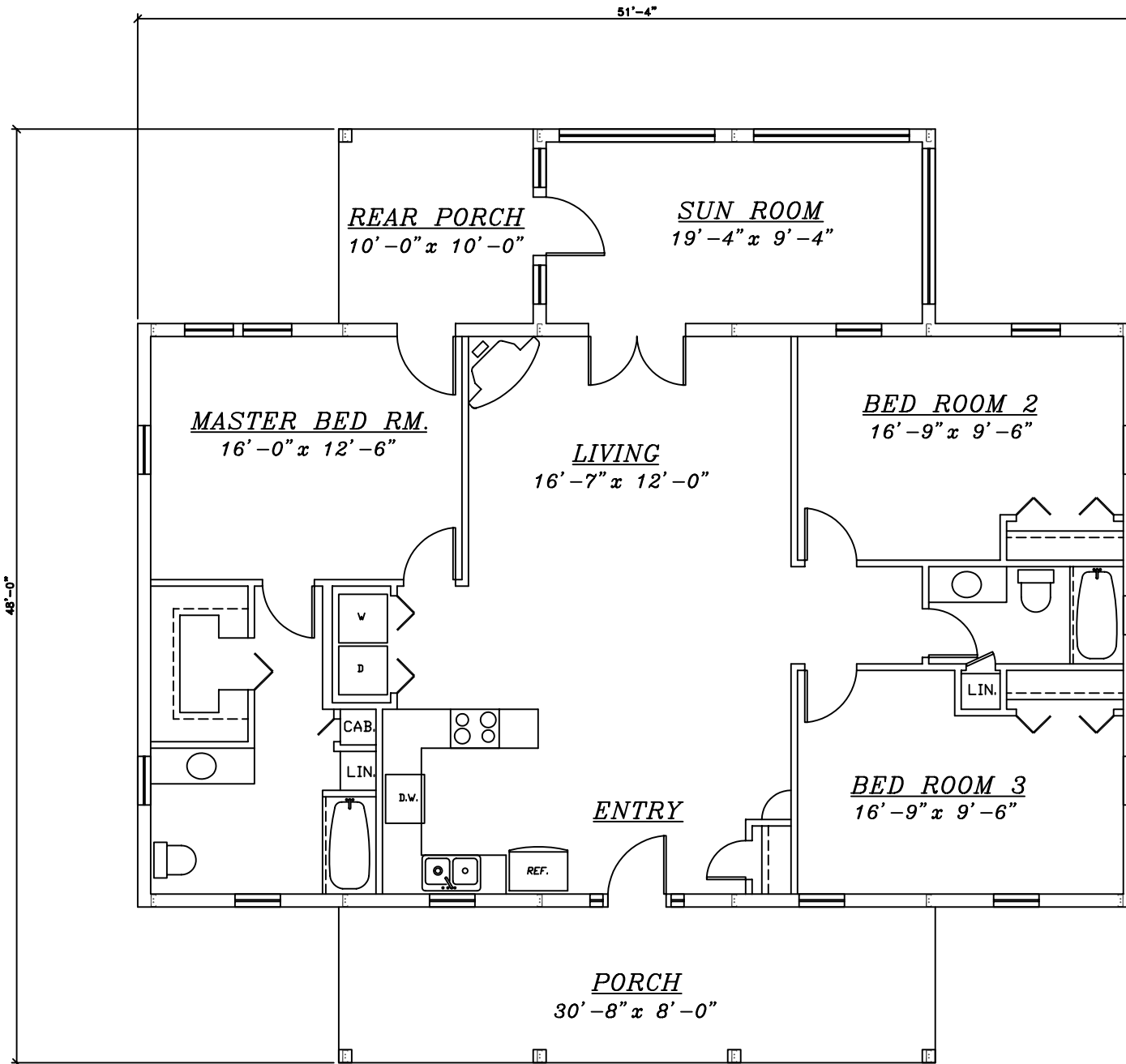
[Help/info](#)

Front/ Left Elevation	Rear/ Right Elevation
1st Floor Plan	2nd Floor Plan

*Values are approximate



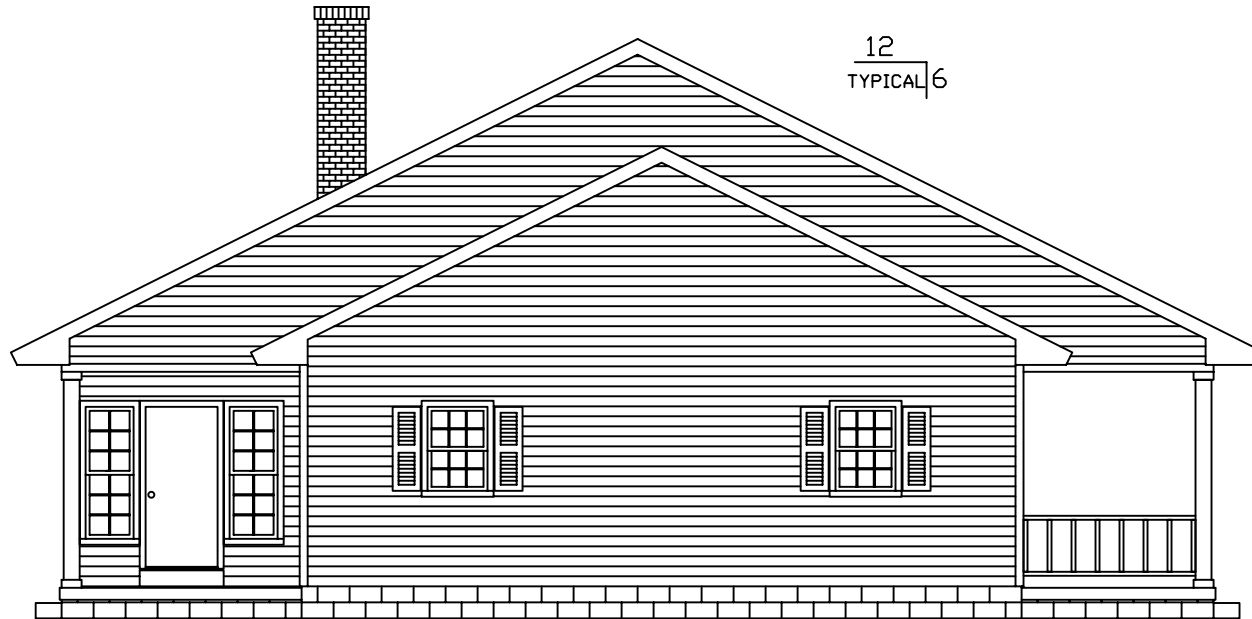
[RETURN TO HOME PAGE](#)



Cleburne I



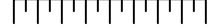
FRONT



12
TYPICAL 6

LEFT

0 1 2 3 4 5 6 7 8



Scale: 1/8" = 1'

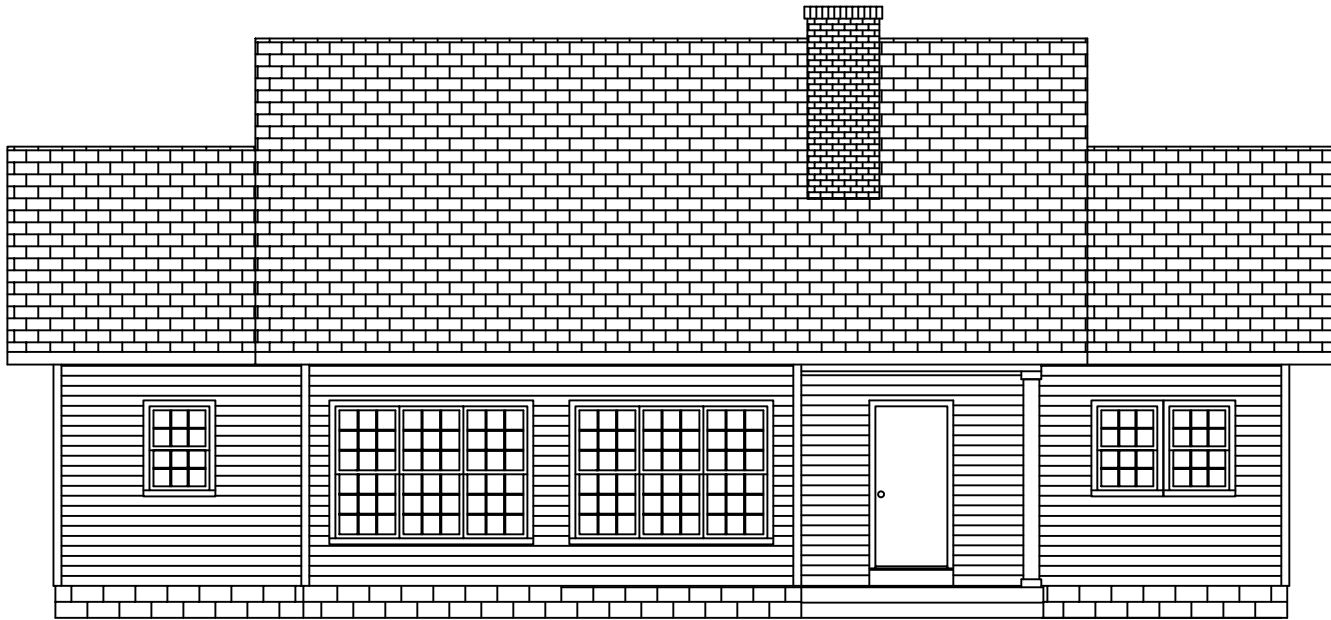


= COLUMN IN WALL

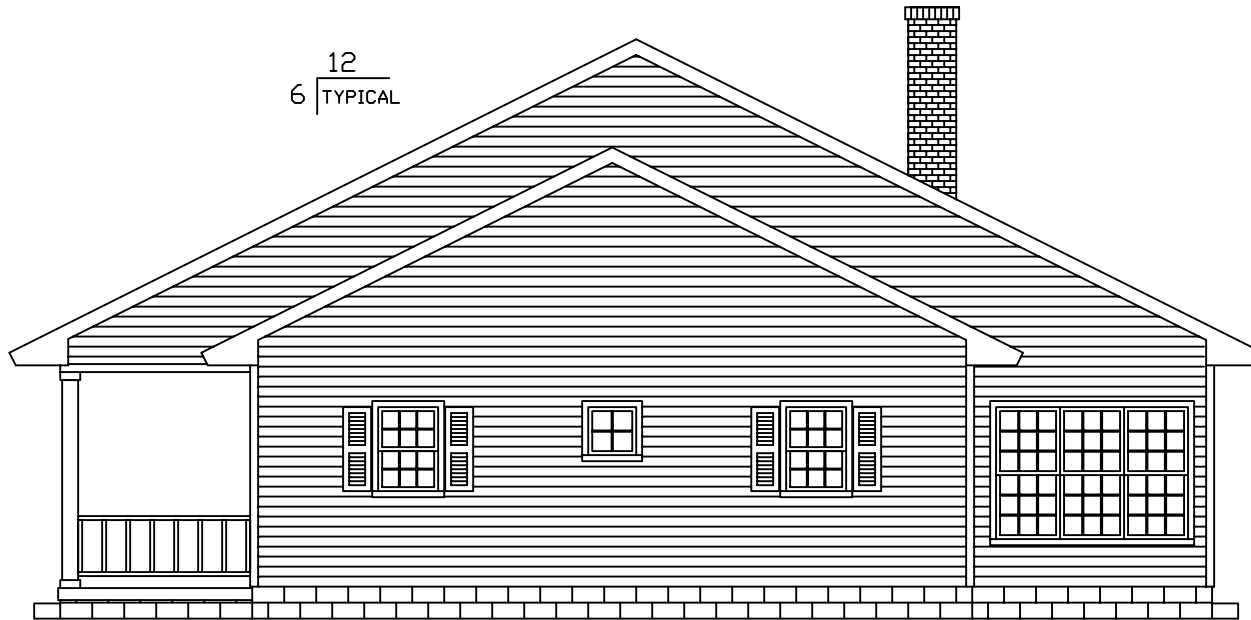
Cleburne I



EXCALIBUR
STEEL STRUCTURES
ExcaliburSteel.com
423-624-1047



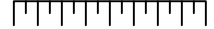
REAR



$\frac{12}{6}$ TYPICAL

RIGHT

0 1 2 3 4 5 6 7 8



Scale: 1/8" = 1'

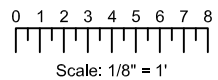
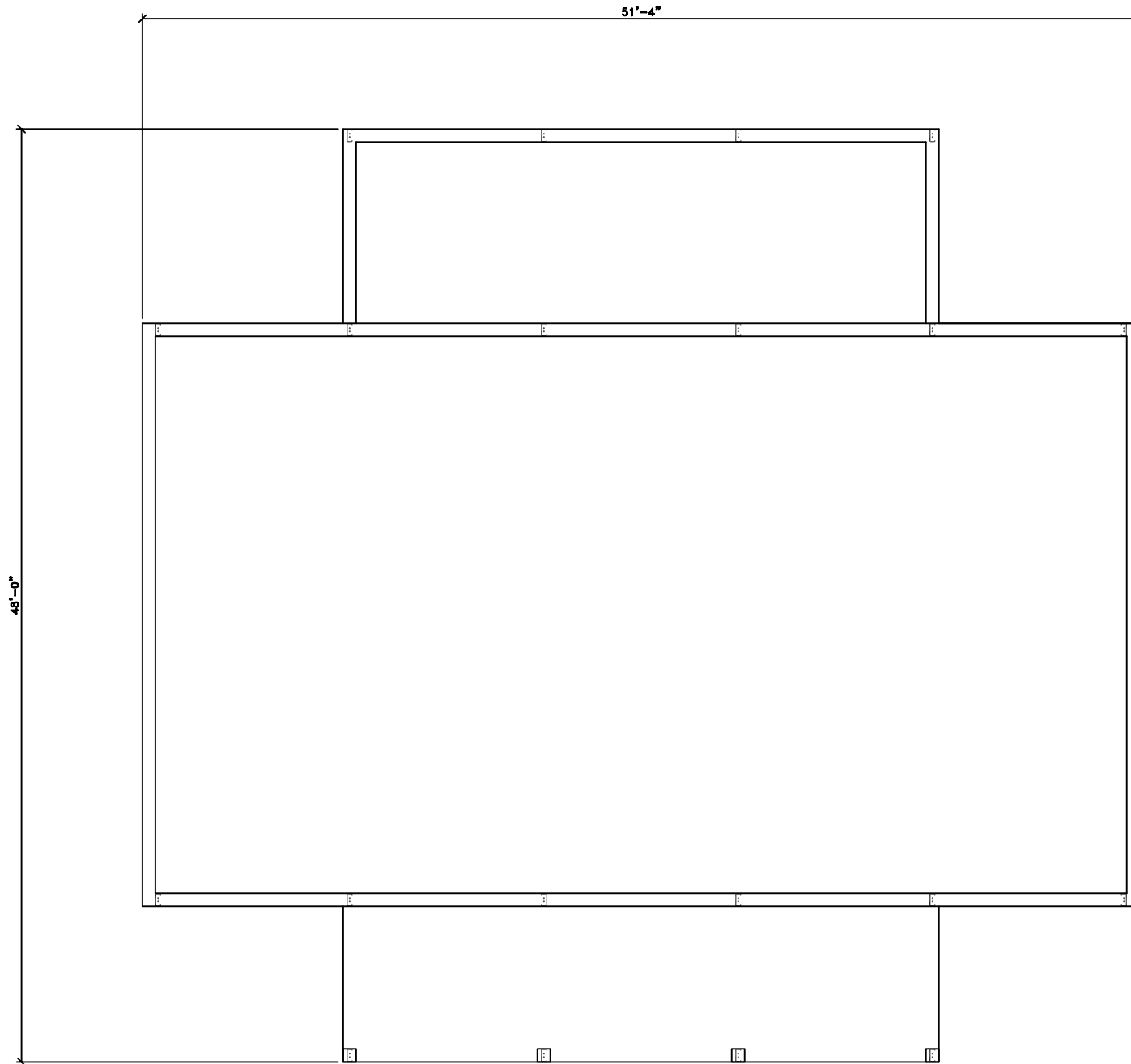


= COLUMN IN WALL

Cleburne I



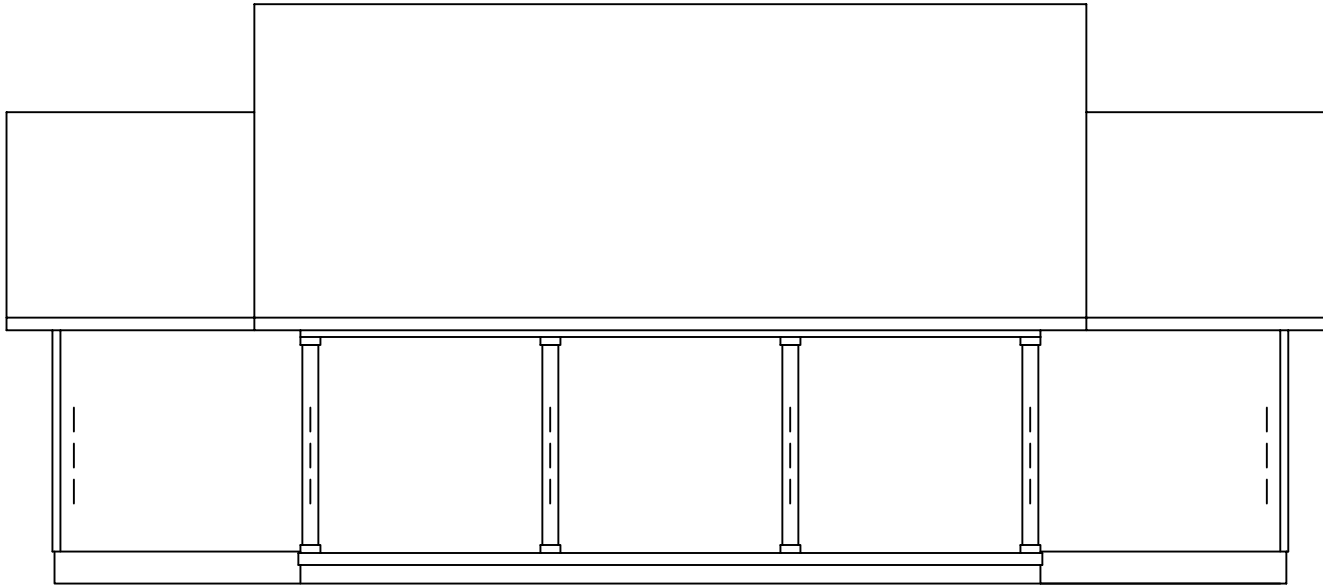
EXCALIBUR
STEEL STRUCTURES
ExcaliburSteel.com
423-624-1047



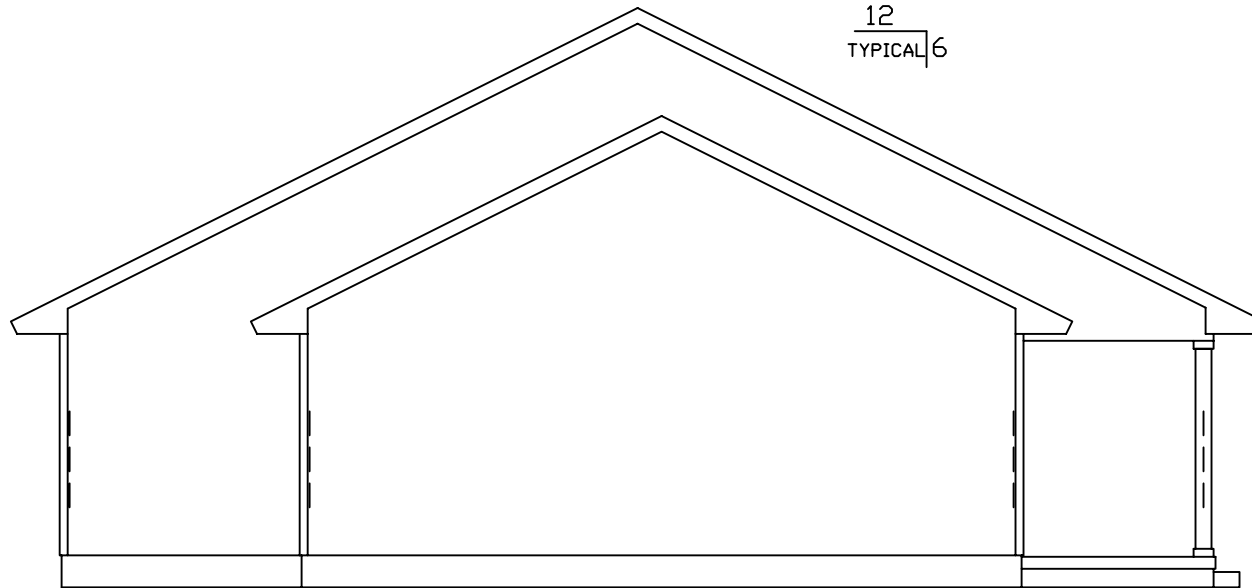
Cleburne I



EXCALIBUR
STEEL STRUCTURES
ExcaliburSteel.com
423-624-1047

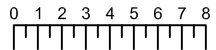


FRONT



12
TYPICAL 6

LEFT



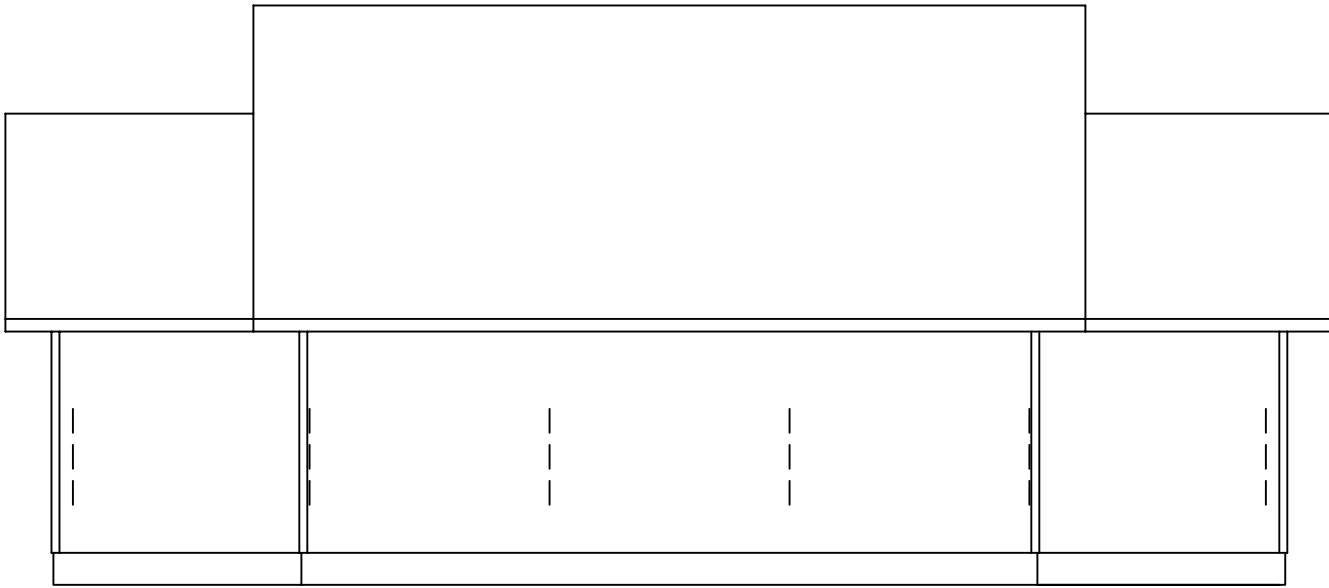
Scale: 1/8" = 1'

 = COLUMN IN WALL

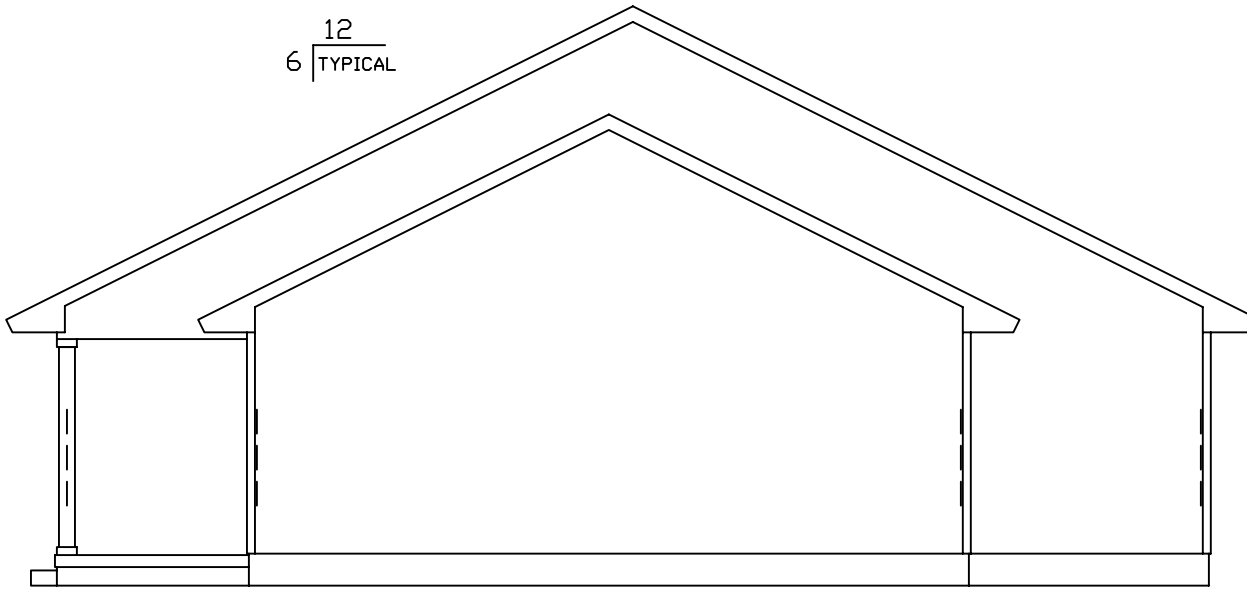
Cleburne I



EXCALIBUR
STEEL STRUCTURES
ExcaliburSteel.com
423-624-1047



REAR



RIGHT

0 1 2 3 4 5 6 7 8



Scale: 1/8" = 1'



= COLUMN IN WALL

Cleburne I



EXCALIBUR
STEEL STRUCTURES
ExcaliburSteel.com
423-624-1047