



[← BACK](#)   [CONTENTS](#)   [NEXT →](#)

## Cedar Creek



Copyright© 2000 Excalibur Steel Structures of Tennessee, LLC.

### Specifications\*

Living Area, 1st Floor:	1,209 s.f.	Dimensions (Overall):	60'-8" x 32'-0"
Living Area, 2nd Floor:	507 s.f.	Roof Pitch:	24/12
Utility:	39 s.f.	Ceiling Height, 1st Flr.:	8'
Garage:	n/a	Ceiling Height, 2nd Flr.:	10'
Porch, Front:	n/a	Bedrooms:	2
Porch, Rear:	n/a	Baths:	2
<b>Total Area:</b>	<b>1,755 s.f.</b>	Fireplace:	n/a
Basement (optional):	1,461 s.f.	Standard Model Price:	<a href="#">Price List</a>



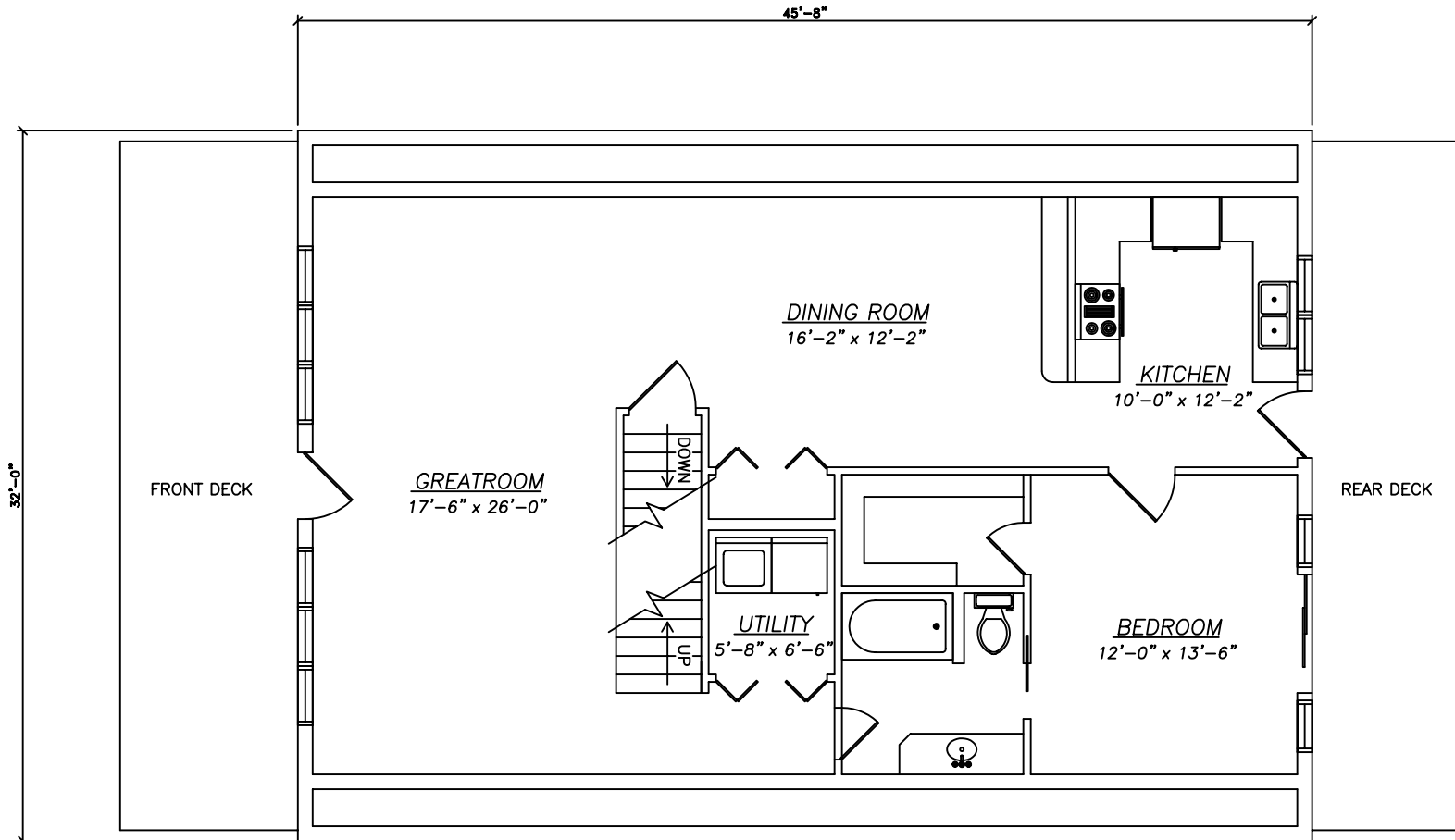
[Help/info](#)

<a href="#">Front/ Left Elevation</a>	<a href="#">Rear/ Right Elevation</a>
<a href="#">1st Floor Plan</a>	<a href="#">2nd Floor Plan</a>

\*Values are approximate

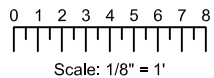


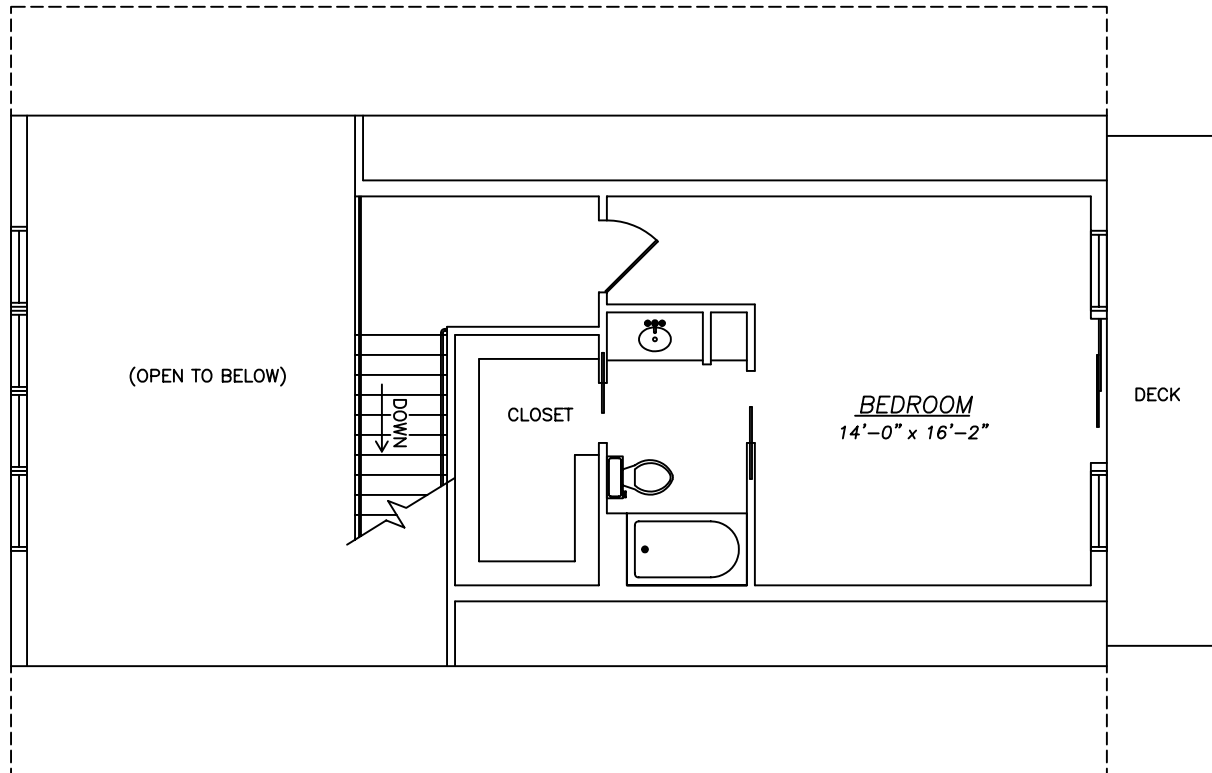
[RETURN TO HOME PAGE](#)



**1st Floor**

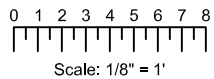
**Cedar Creek**

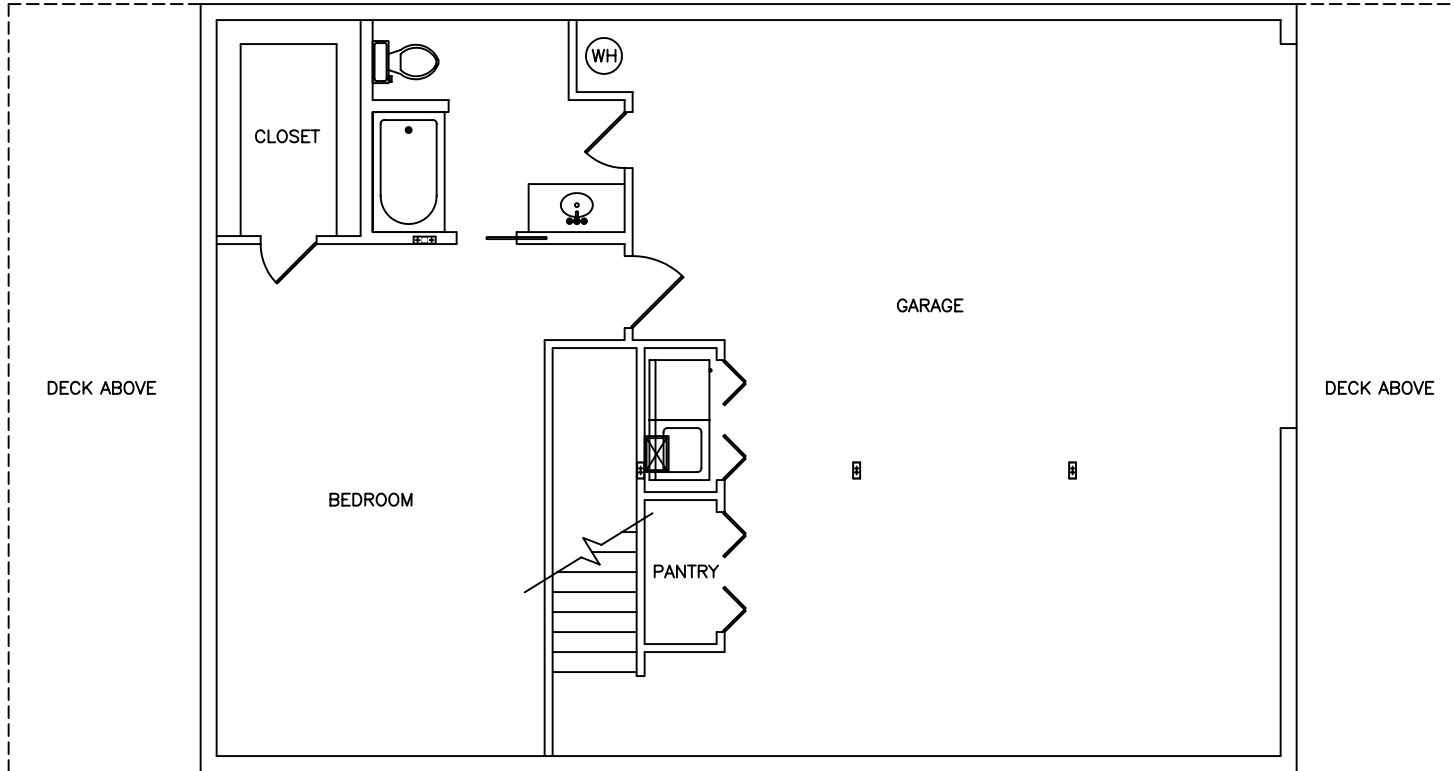




**2nd Floor**

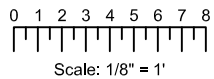
**Cedar Creek**



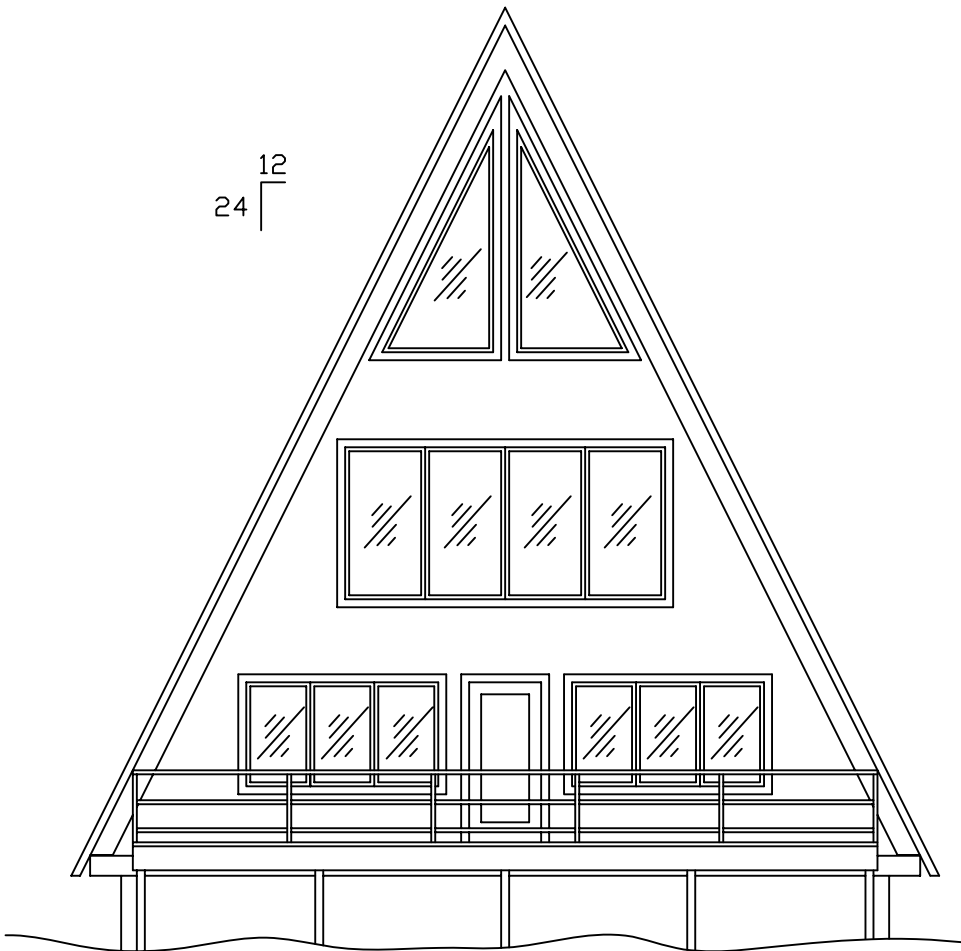


**Basement**

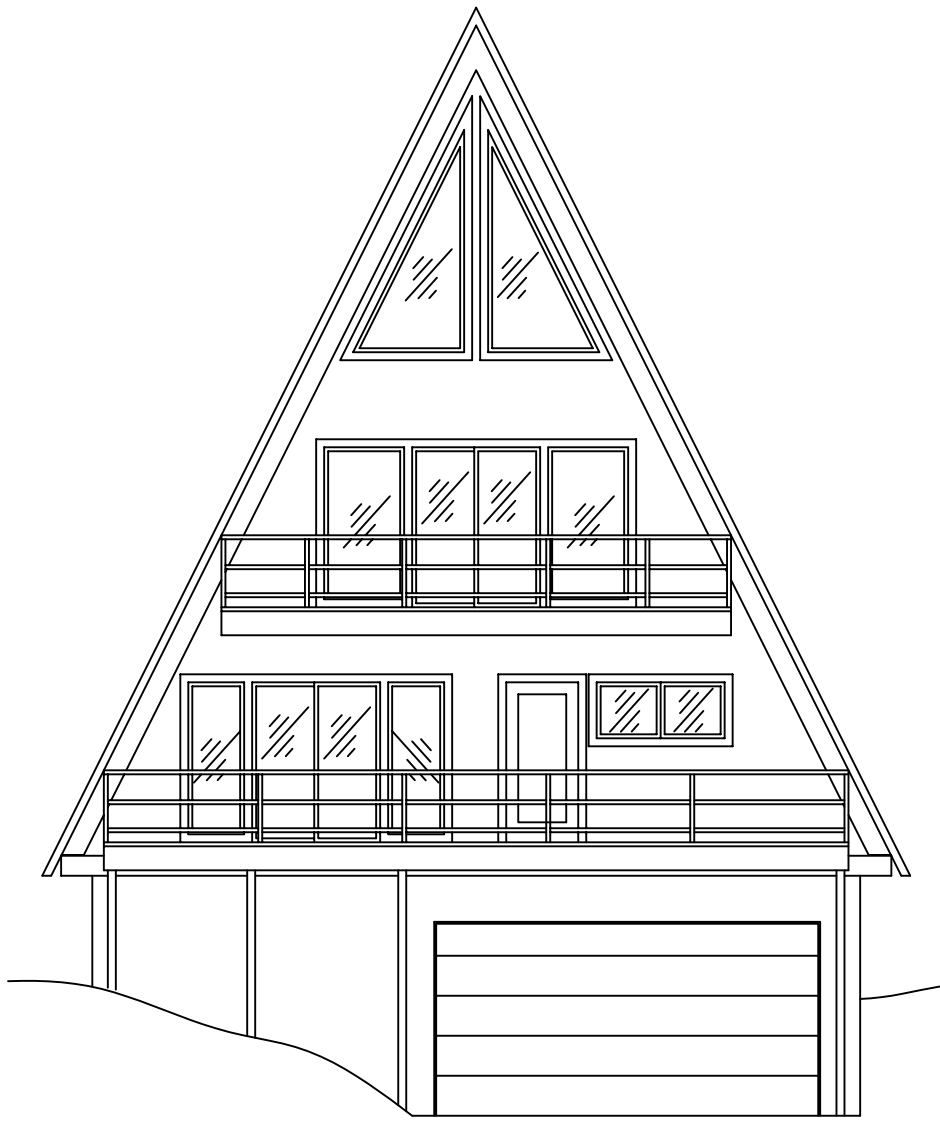
**Cedar Creek**



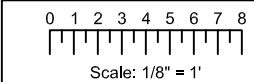
12  
24



FRONT



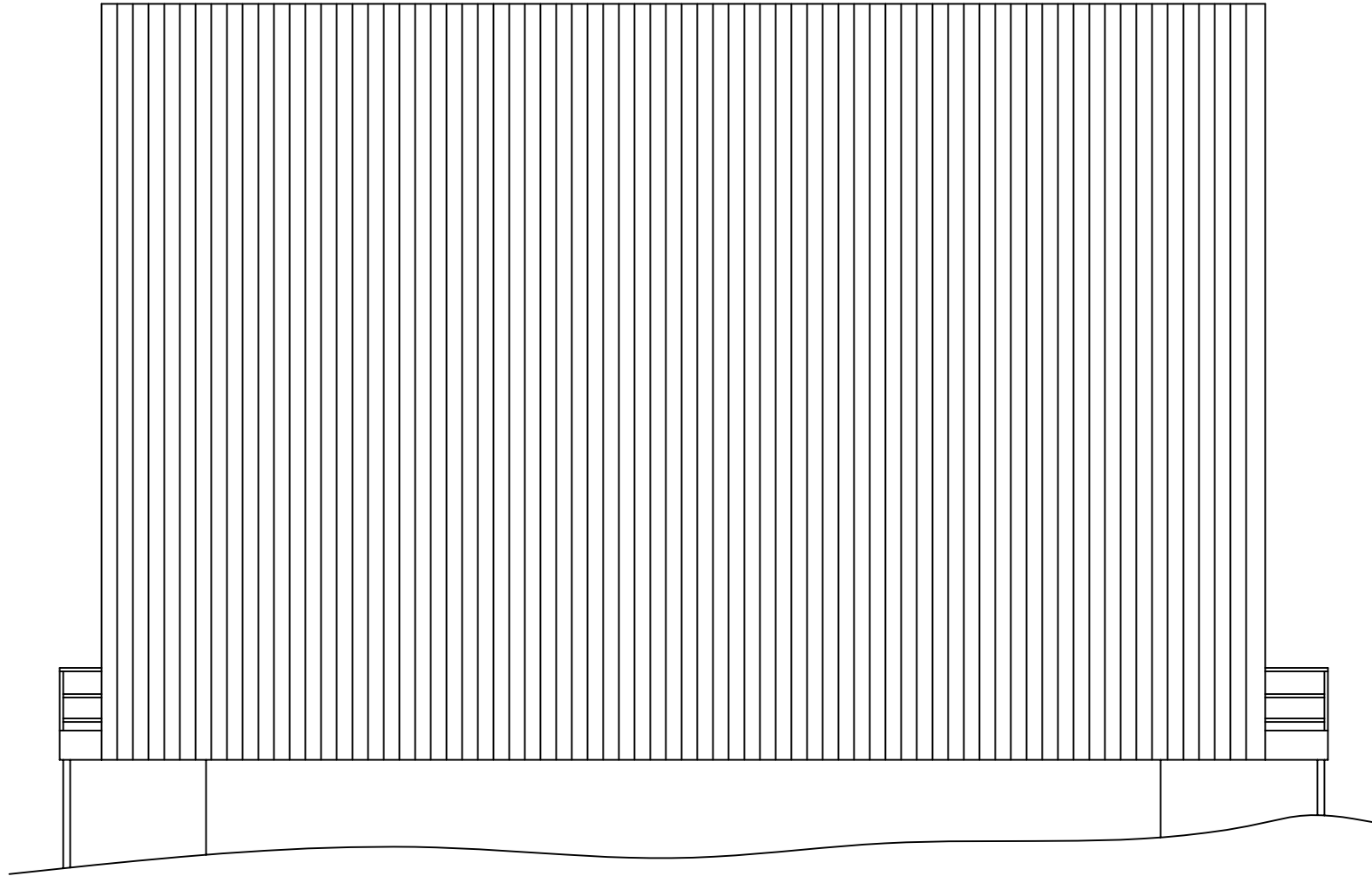
REAR



**Cedar Creek**

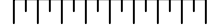


EXCALIBUR  
STEEL STRUCTURES  
ExcaliburSteel.com  
423-624-1047



LEFT/ RIGHT

0 1 2 3 4 5 6 7 8



Scale: 1/8" = 1'

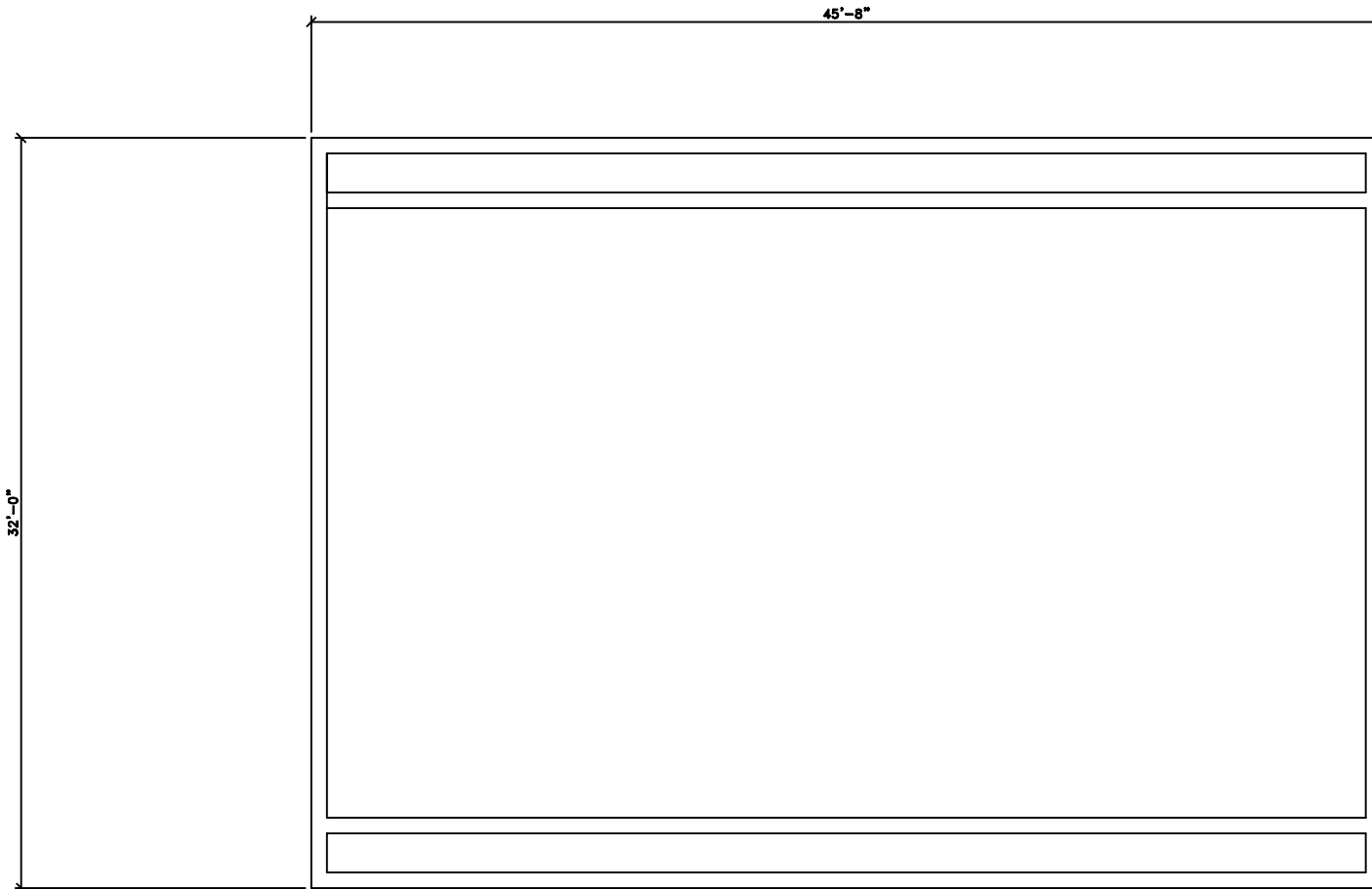


= COLUMN IN WALL

**Cedar Creek**

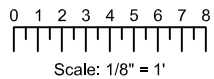


EXCALIBUR  
STEEL STRUCTURES  
ExcaliburSteel.com  
423-624-1047

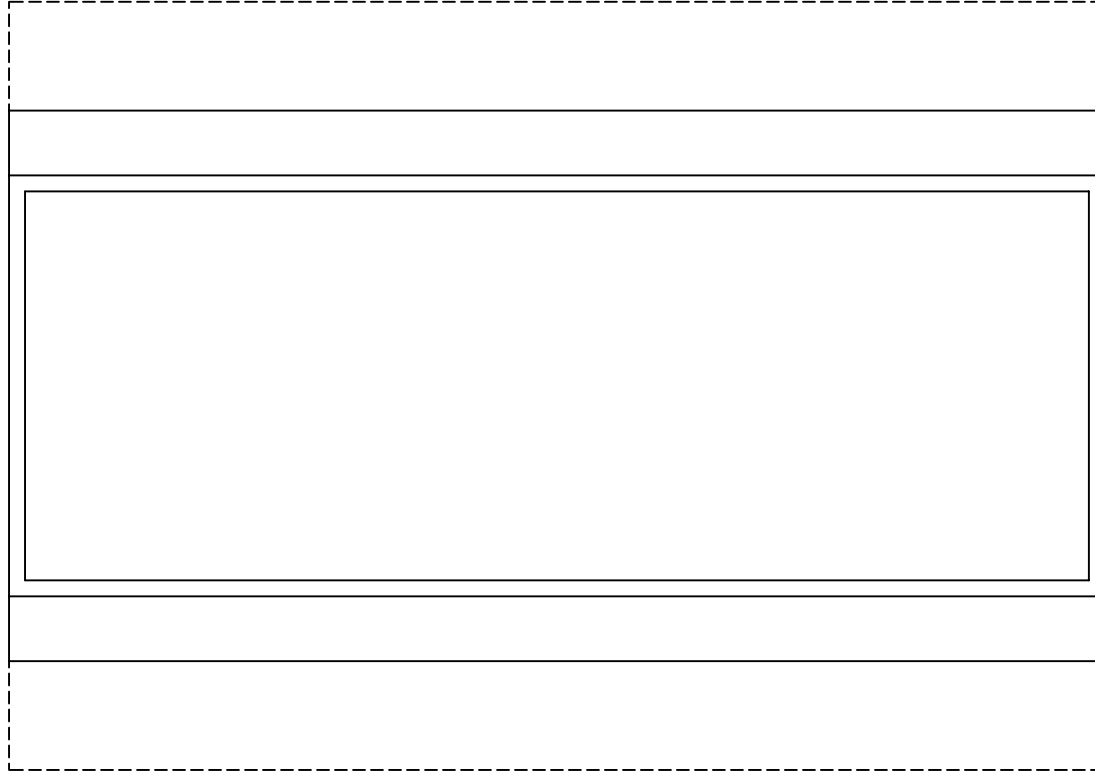


**1st Floor**

**Cedar Creek**

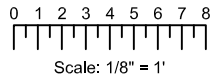


EXCALIBUR  
STEEL STRUCTURES  
ExcaliburSteel.com  
423-624-1047

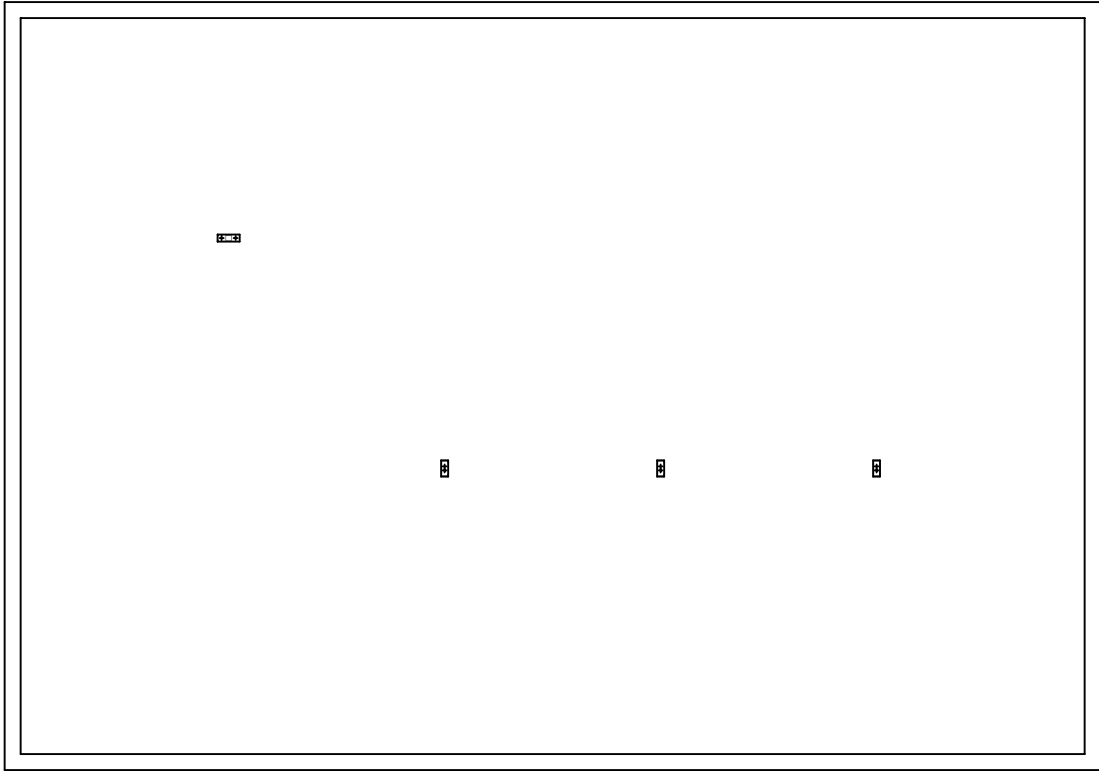


**2nd Floor**

**Cedar Creek**

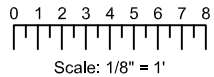


EXCALIBUR  
STEEL STRUCTURES  
ExcaliburSteel.com  
423-624-1047



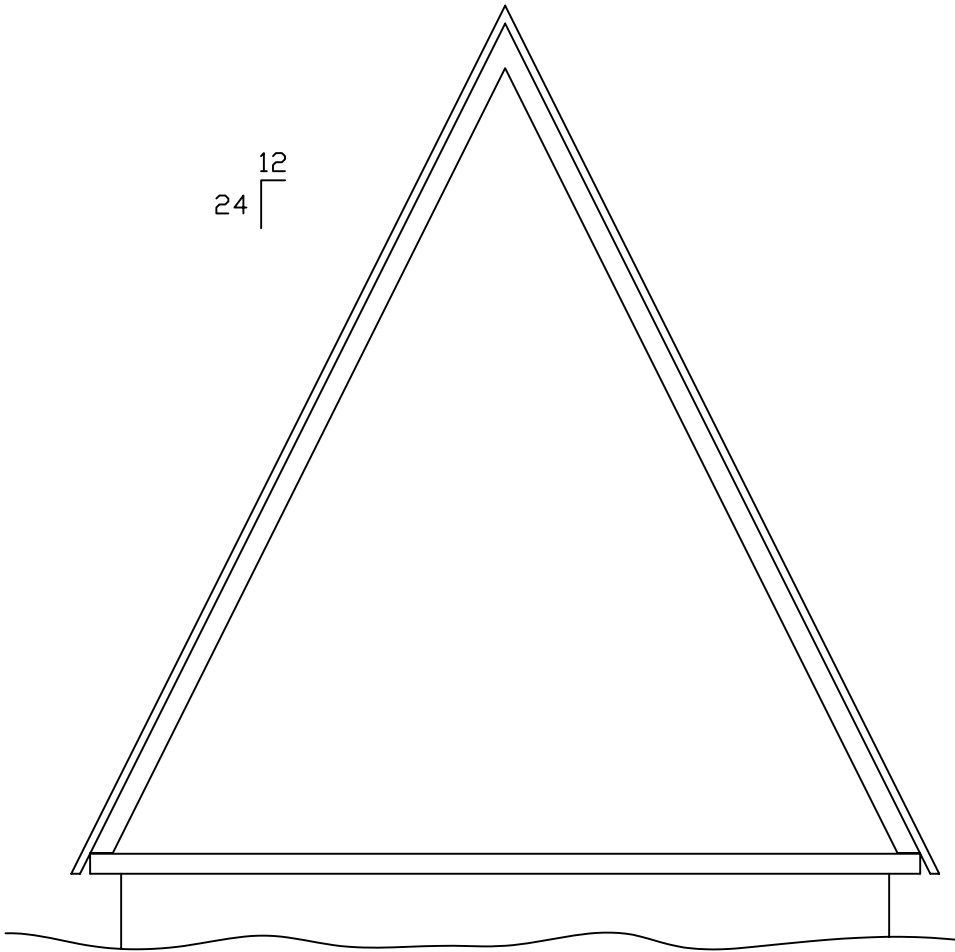
**Basement**

**Cedar Creek**

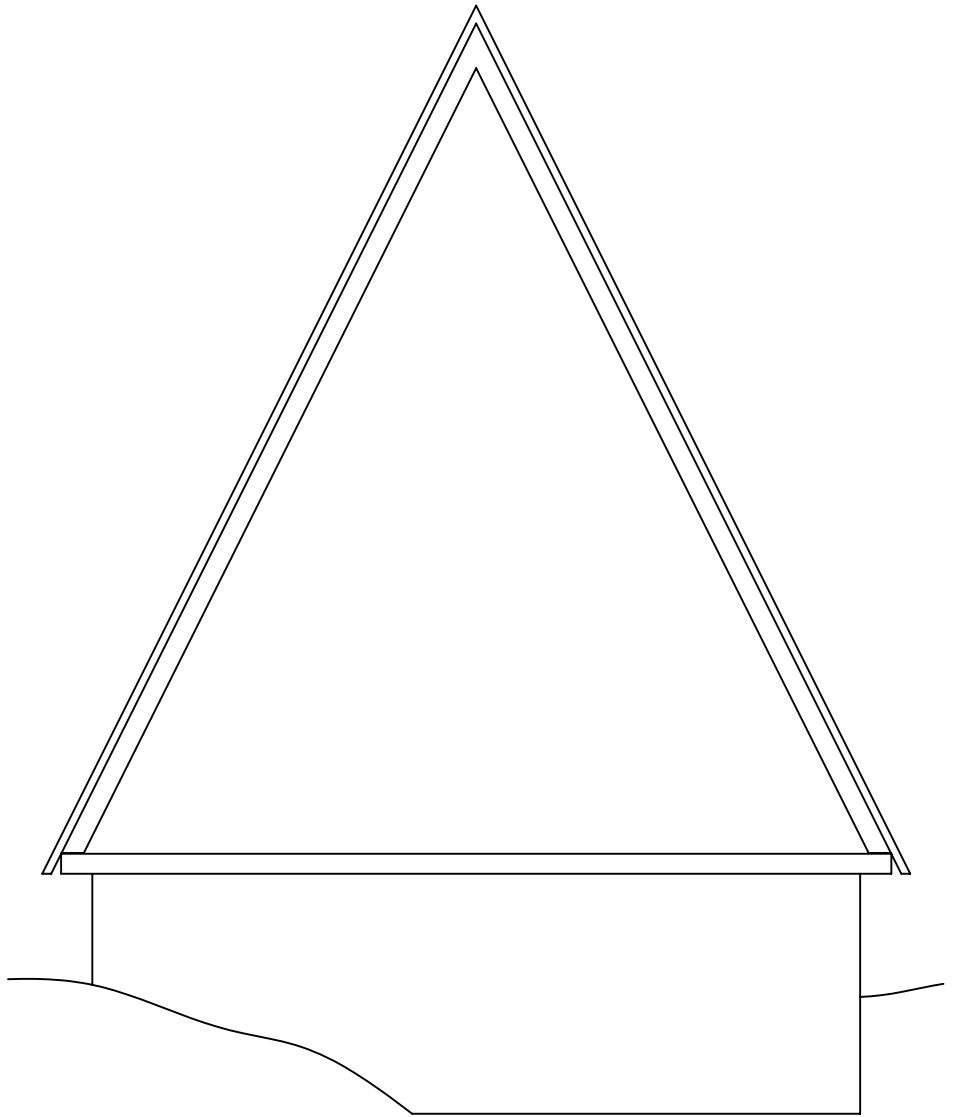


EXCALIBUR  
STEEL STRUCTURES  
ExcaliburSteel.com  
423-624-1047

24  $\frac{12}{}$

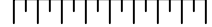


FRONT



REAR

0 1 2 3 4 5 6 7 8



Scale: 1/8" = 1'

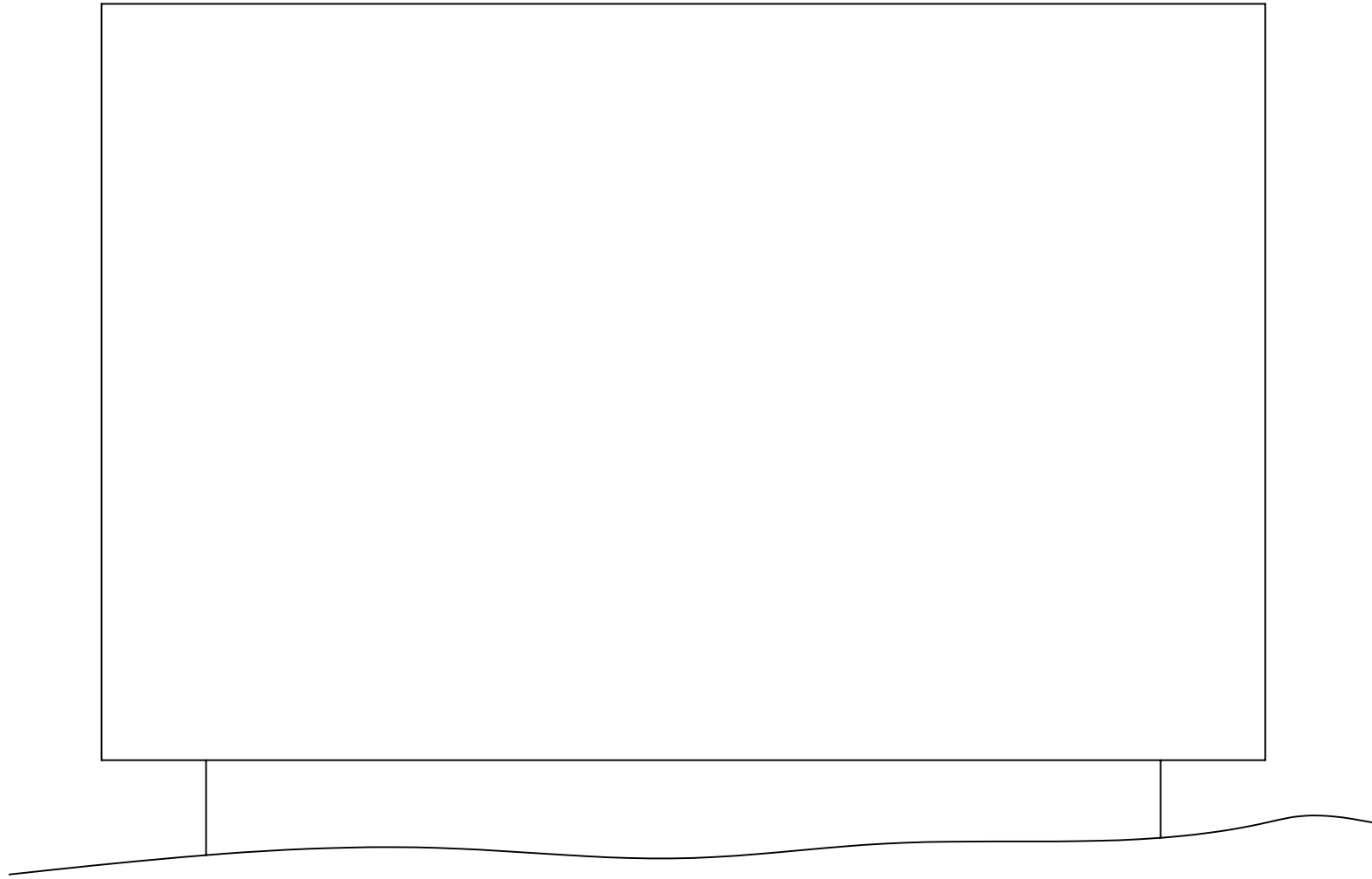


= COLUMN IN WALL

**Cedar Creek**

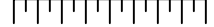


EXCALIBUR  
STEEL STRUCTURES  
ExcaliburSteel.com  
423-624-1047



LEFT/ RIGHT

0 1 2 3 4 5 6 7 8



Scale: 1/8" = 1'



= COLUMN IN WALL

**Cedar Creek**



EXCALIBUR  
STEEL STRUCTURES  
ExcaliburSteel.com  
423-624-1047