



## Technical Bulletin

#2001.03  
March 2001

**arxx**  
BUILDING PRODUCTS

# 10 Inch Form Unit

---

The Arxx™ High Performance Wallsystem is an insulating concrete forming (ICF) system that is used in the construction of all types of buildings from single family residential to commercial and industrial applications.

To facilitate further expansion into the commercial, institutional and industrial construction sector, Arxx Building Products recently introduced its 10 Inch Cavity form line, providing new capabilities in wall height construction and strength.

## Product Description

10 inch Arxx Standard form follows the usual dimensions for height and length of 16 ¾" and 48" respectively, while the lengths of the 90 degree corner are 19 7/16" and 27 7/16", or a total of 46 7/8". The foam thickness is identical to that of the 6" Arxx forms at 2 5/8" on either side of the nominal 10" concrete core (actual thickness is 9 7/8"). The R-Value of the form is calculated at 22 in accordance with ASHRAE standards. The 10-inch corner forms incorporate an integral corner furring tab.

Currently, Arxx Building Products offers the 10-inch forms in the standard and 90° corner forms only. The 10-inch forms are available only in the one side buried format.

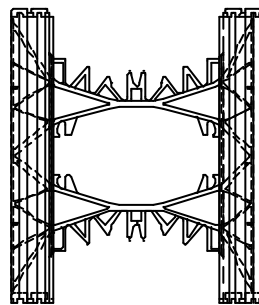
## Design

When design requires the maximum flexural strength of the wall, the designer has the ability to specify a sacrificial horizontal bar in the bottom of the web. This bar should not be considered to be structural due to its proximity to the face of the concrete wall. However, by using this sacrificial bar, the designer can design the wall with the vertical rebar in the optimal position. The switch to a **V** groove in the web allows the designer greater flexibility in horizontal and vertical bar sizes that can be placed in the web notches.

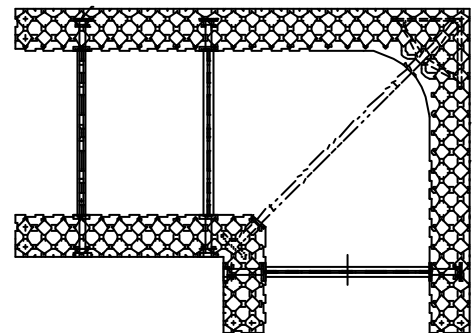
## Installation

The normal Arxx installation instructions apply for the 10-inch forms. However, due to the large panel of unsupported EPS at the corners, supplemental support is required. Arxx experience has demonstrated that the use of 3 horizontal strips of fibre tape per course is sufficient to provide the additional support necessary. These strips of tape should extend around the corner such that they reach the second web on either side of the corner. Additionally, each corner should be taped vertically on the outside face of the forms along the second web from the corner. This ensures that the corners are held securely and integrally with the adjacent form. For window and door buck recommendations, refer to page 40 of the Arxx Installation Guide.

Due to the increased volume of concrete in the 10-inch forms, care must be taken to ensure that impact loading of the concrete on the inside of the form is kept to a minimum.



10-Inch Standard Form Unit



10-Inch 90° Corner Form Unit